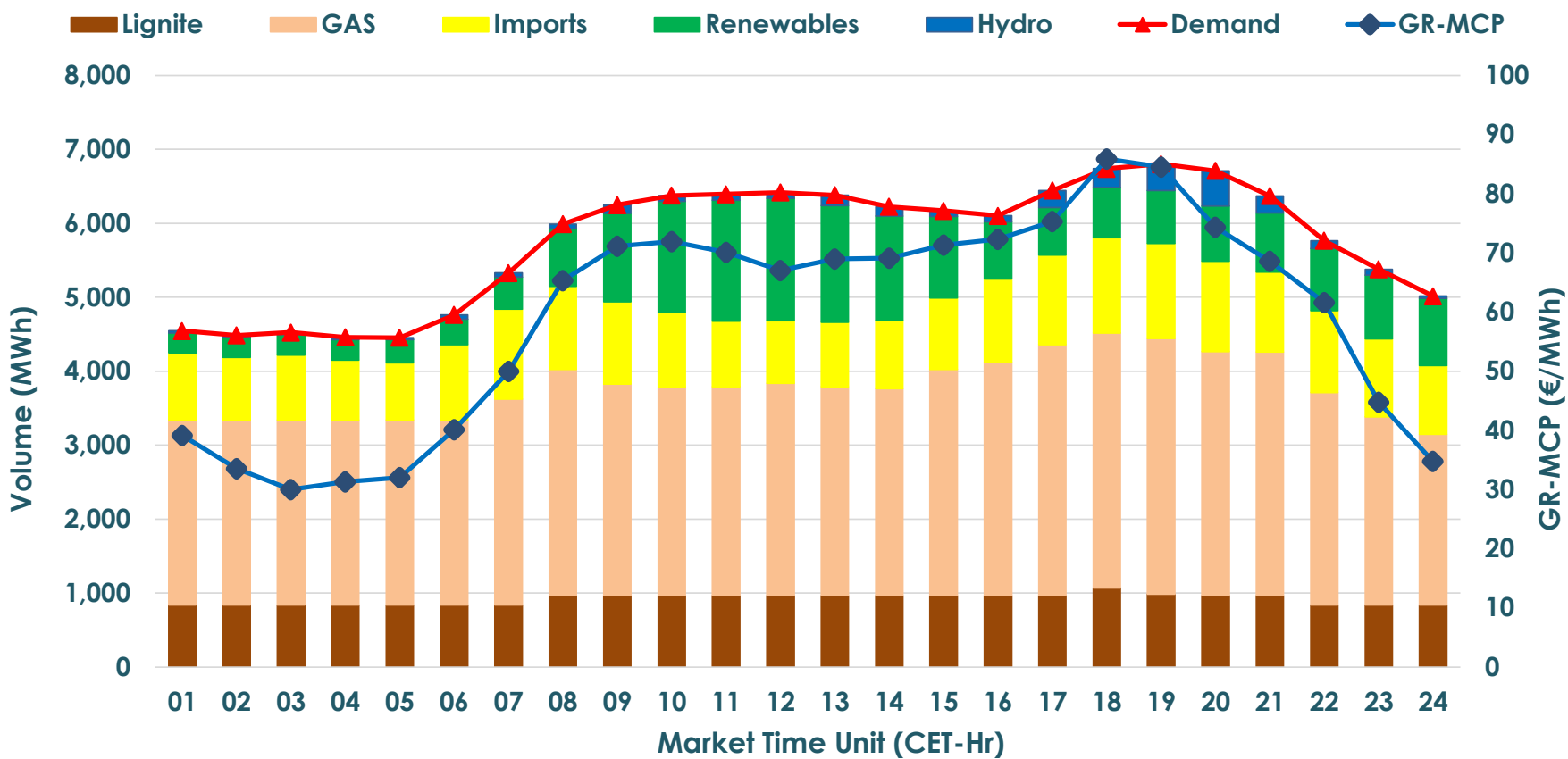


17.11.2020 Day-Ahead Market



GR Bidding Zone Weekly Figures

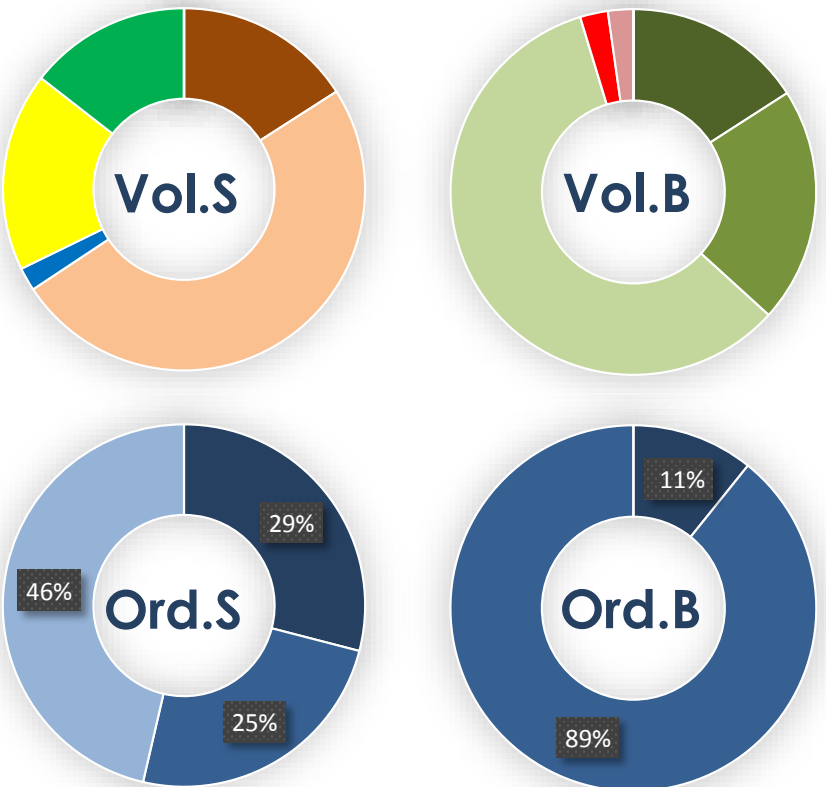
Delivery Day	11.11	12.11	13.11	14.11	15.11	16.11	17.11
	⬇️-8%	⬆️52%	⬇️-5%	⬇️-21%	⬆️6%	⬆️11%	⬇️-3%
Avg.MCP (€/MWh)	44.80	68.09	64.75	51.20	54.31	60.44	58.87
Max.MCP (€/MWh)	65.11	110.14	103.09	86.15	86.21	110.04	85.90
Min.MCP (€/MWh)	33.05	34.86	43.61	38.43	35.56	26.56	30.00
	⬆️6%	➡️-1%	➡️-1%	⬇️-4%	⬇️-6%	⬆️9%	➡️2%
Tot.Vol(GWh)	279.69	277.89	275.76	263.76	247.61	270.26	276.15

Trade's Volume Mix

		Sell - MWh	Buy - MWh	
Lignite	(16%)	21,990	0	(0%)
Gas	(50%)	68,706	0	(0%)
Hydro	(2%)	2,879	0	(0%)
Imports	(18%)	24,516		
Renewables	(14%)	19,983	0	(0%)
HV Load	(0%)	0	21,958	(16%)
MV Load	(0%)	0	28,777	(21%)
LV Load	(0%)	0	80,855	(59%)
Pumping	(0%)	0	0	(0%)
Exports			3,393	(2%)
Sys.Losses	(0%)	0	3,091	(2%)

Trades by Order Type

Delivery Day		11.11	12.11	13.11	14.11	15.11	16.11	17.11
Order P.T		Sell & Buy Trades in (GWh) per Price Type						
PPT	(S)	69.572	50.565	41.535	45.507	42.848	38.313	40.089
HBD	(S)	32.315	46.999	41.006	25.605	28.913	35.970	33.967
BLK	(S)	37.957	41.380	55.338	60.767	52.042	60.849	64.018
PPT	(B)	12.037	12.828	15.696	15.650	14.950	14.295	14.875
HBD	(B)	127.807	126.116	122.182	116.229	108.853	120.836	123.199
BLK	(B)							
		Sell & Buy Orders Traded per Price Type						
PPT	(S)	450	531	653	663	627	607	568
HBD	(S)	825	1050	1135	1023	1049	1030	1079
BLK	(S)	294	302	414	421	351	421	424
PPT	(B)	78	73	72	72	72	72	48
HBD	(B)	1949	1800	1752	1751	1729	1743	1764
BLK	(B)							



MCP Market Clearing Price (€/MWh)

PPT Priority Price-Taking

HBD Hybrid

BLK Block