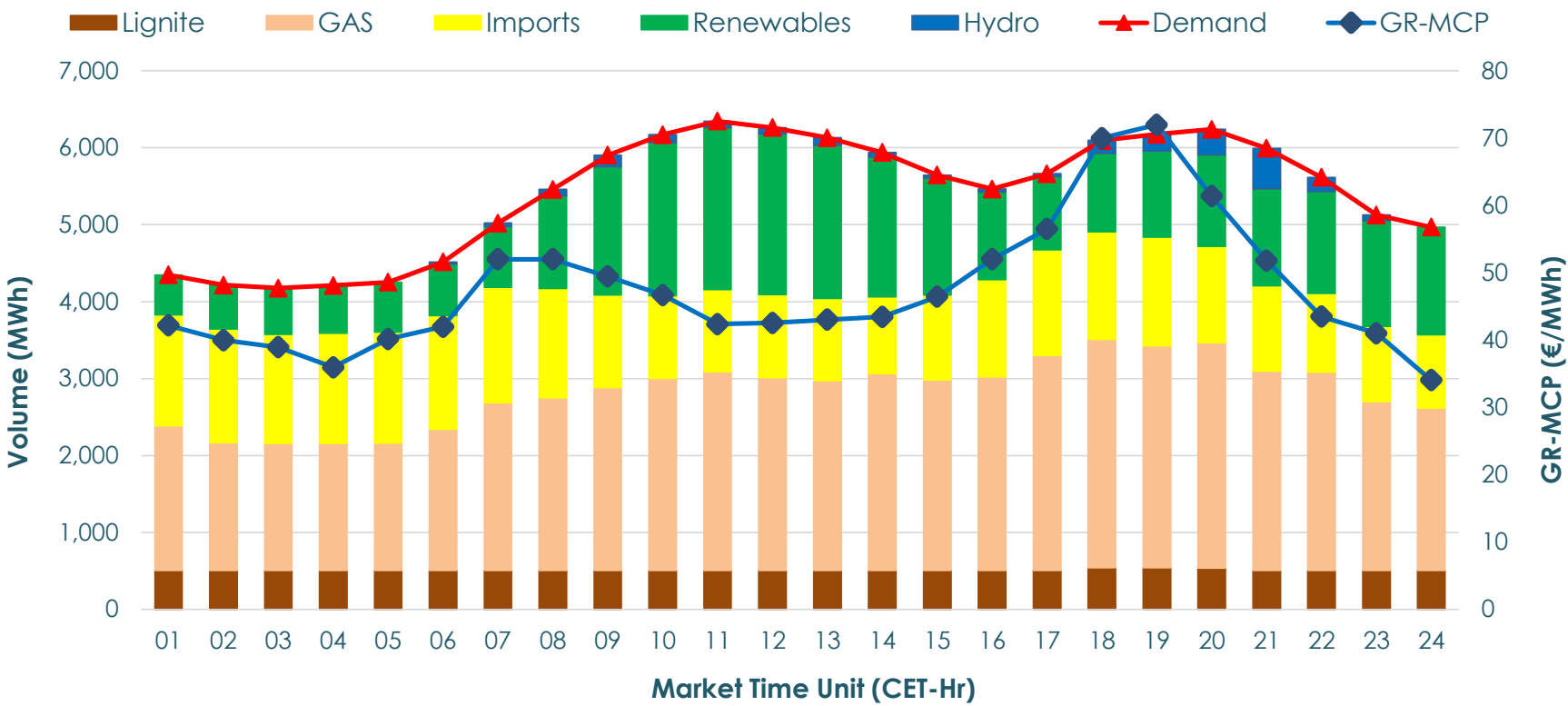


04.11.2020 Day-Ahead Market



GR Bidding Zone Weekly Figures

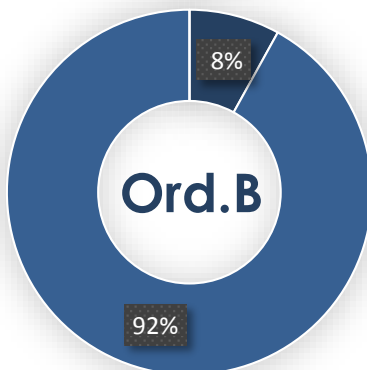
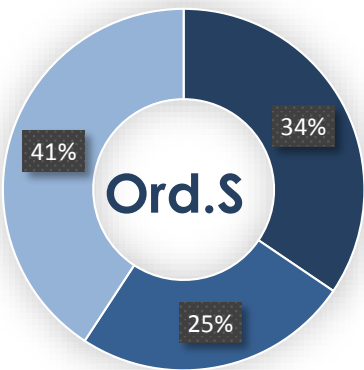
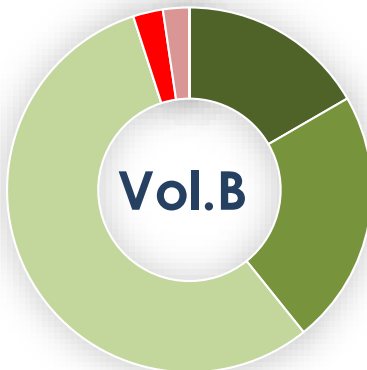
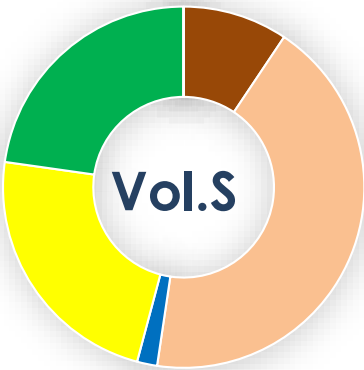
Delivery Day	29.10	30.10	31.10	01.11	02.11	03.11	04.11
				↗14%	↘-8%	↘-15%	
Avg.MCP (€/MWh)	N/M	N/M	N/M	53.56	60.99	56.01	47.48
Max.MCP (€/MWh)	N/M	N/M	N/M	92.02	90.10	87.70	72.00
Min.MCP (€/MWh)	N/M	N/M	N/M	27.01	43.01	40.25	34.06
				↗5%	↗2%	↗5%	
Tot.Vol(GWh)	N/M	N/M	N/M	230.67	241.79	247.31	259.87

Trades by Order Type

Delivery Day	29.10	30.10	31.10	01.11	02.11	03.11	04.11
Order P.T	Sell & Buy Trades in (GWh) per Price Type						
PPT	(S)			48.216	35.692	33.574	44.794
HBD	(S)			36.015	31.992	34.467	32.154
BLK	(S)			31.107	53.213	55.615	52.985
PPT	(B)			10.926	10.352	10.424	10.450
HBD	(B)			104.412	110.545	113.232	119.483
BLK	(B)						
	Sell & Buy Orders Traded per Price Type						
PPT	(S)			700	626	618	749
HBD	(S)			1030	1000	1065	1079
BLK	(S)			185	354	325	333
PPT	(B)			48	48	48	48
HBD	(B)			1627	1633	1589	1726
BLK	(B)						

Trade's Volume Mix

	Sell - MWh	Buy - MWh
Lignite	9% - 12,196.998	0.000 - 0%
Gas	43% - 55,829.138	0.000 - 0%
Hydro	2% - 2,340.000	0.000 - 0%
Imports	23% - 29,990.621)	
Renewables	23% - 29,576.035	0.000 - 0%
HV Load	0% - 0.000	21,634.831 - 17%
MV Load	0% - 0.000	29,348.702 - 23%
LV Load	0% - 0.000	72,476.418 - 56%
Pumping	0% - 0.000	0.000 - 0%
Exports		3,438.841 - 3%
Sys.Losses	0% - 0.000	3,034.000 - 2%



MCP

Market Clearing Price (€/MWh)

PPT

Priority Price-Taking

HBD

Hybrid

BLK

Block