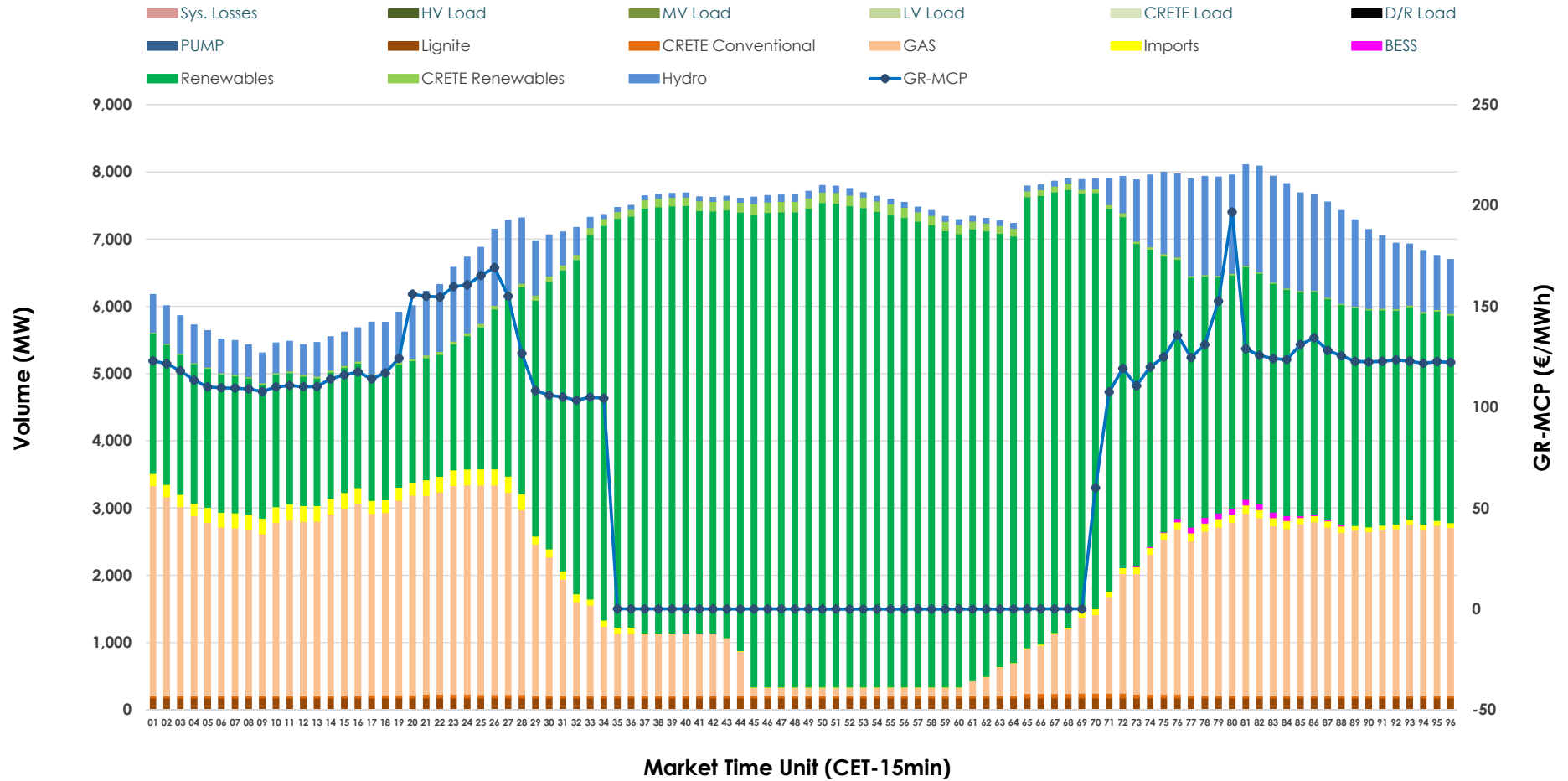


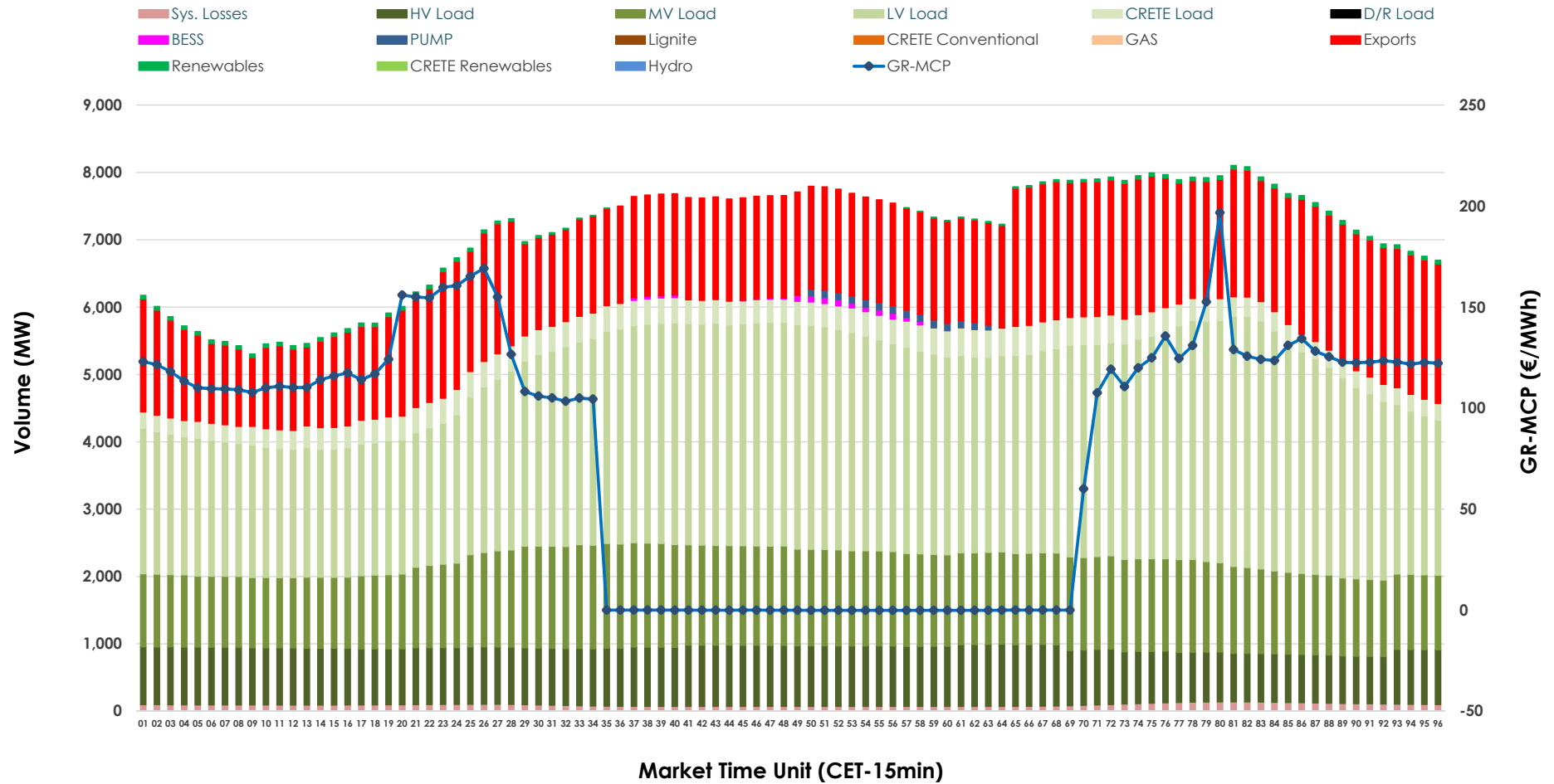


Day-Ahead Market Outlook

12.05.2026 Day-Ahead Market - Sell



12.05.2026 Day-Ahead Market - Buy



GR Bidding Zone Weekly Figures

Delivery Day	06.05	07.05	08.05	09.05	10.05	11.05	12.05
	↗ 4%	↗ 17%	↗ 1%	↘ -11%	↘ -16%	↗ 6%	↘ -19%
Avg.MCP (€/MWh)	103.01	120.39	122.10	109.01	91.94	97.12	78.99
Max.MCP (€/MWh)	205.60	176.89	180.08	220.88	208.60	191.00	196.70
Min.MCP (€/MWh)	0.00	11.00	54.19	0.00	-0.02	0.00	-0.10
	↘ -3%	↗ 1%	↗ 3%	↗ 1%	↘ -9%	↗ 12%	↗ 7%
Tot.Vol(GWh)	296.65	298.95	307.30	311.59	283.97	317.58	340.95

Trades by Order Type

Delivery Day		06.05	07.05	08.05	09.05	10.05	11.05	12.05	
Ord Price Type		Sell & Buy Trades in (GWh) per Price Type							(%)
PPT	(S)	52.370	54.293	56.340	59.265	60.371	67.164	77.219	45.30%
HBD	(S)	69.505	60.788	61.406	71.643	57.624	69.769	74.127	43.48%
BLK	(S)	25.317	34.136	30.821	24.868	23.989	21.856	19.129	11.22%
CPL	(S)	1.136	0.258	5.083	0.022	0.000	0.000	0.000	0.00%
PPT	(B)	15.325	15.121	15.159	15.045	14.673	14.748	15.151	8.89%
HBD	(B)	124.454	122.238	124.069	119.139	108.171	122.215	129.213	75.80%
BLK	(B)	0.000	0.000	0.000	0.000	0.000	0.000	0.000	0.00%
CPL	(B)	8.547	12.116	14.422	21.613	19.138	21.826	26.110	15.32%
		Sell & Buy Orders Traded per Price Type							(%)
PPT	(S)	1667	1689	1702	1708	1716	1762	1764	37.07%
HBD	(S)	3430	3600	3461	3499	3114	3213	2989	62.81%
BLK	(S)	9	13	10	10	9	6	6	0.13%
PPT	(B)	2317	2324	2316	2392	2360	2322	2327	36.34%
HBD	(B)	3947	4001	4025	4063	3578	3881	4077	63.66%
BLK	(B)	0	0	0	0	0	0	0	0.00%

- MCP** Market Clearing Price (€/MWh)
- PPT** Priority Price-Taking
- HBD** Hybrid
- BLK** Block
- CPL** Market Coupling Flow

Trade's Volume Mix

	Sell - MWh	Buy - MWh	
Lignite (2.5%)	4,248	0	(0.0%)
Crete Conv. (0.5%)	887	0	(0.0%)
Gas (24.7%)	42,046	0	(0.0%)
Hydro (8.2%)	13,915	0	(0.0%)
Imports (1.4%)	2,465		
RES (61.6%)	105,011	797	(0.5%)
Crete RES (1.0%)	1,692	0	(0.0%)
BESS (0.1%)	211	246	(0.1%)
HV Load (0.0%)	0	20,147	(11.8%)
MV Load (0.0%)	0	31,307	(18.4%)
LV Load (0.0%)	0	67,770	(39.8%)
Crete Load (0.0%)	0	8,145	(4.8%)
Pumping (0.0%)	0	370	(0.2%)
Exports		39,487	(23.2%)
Sys.Losses (0.0%)	0	2,205	(1.3%)
D/R Load (0.0%)	0	0	(0.0%)

