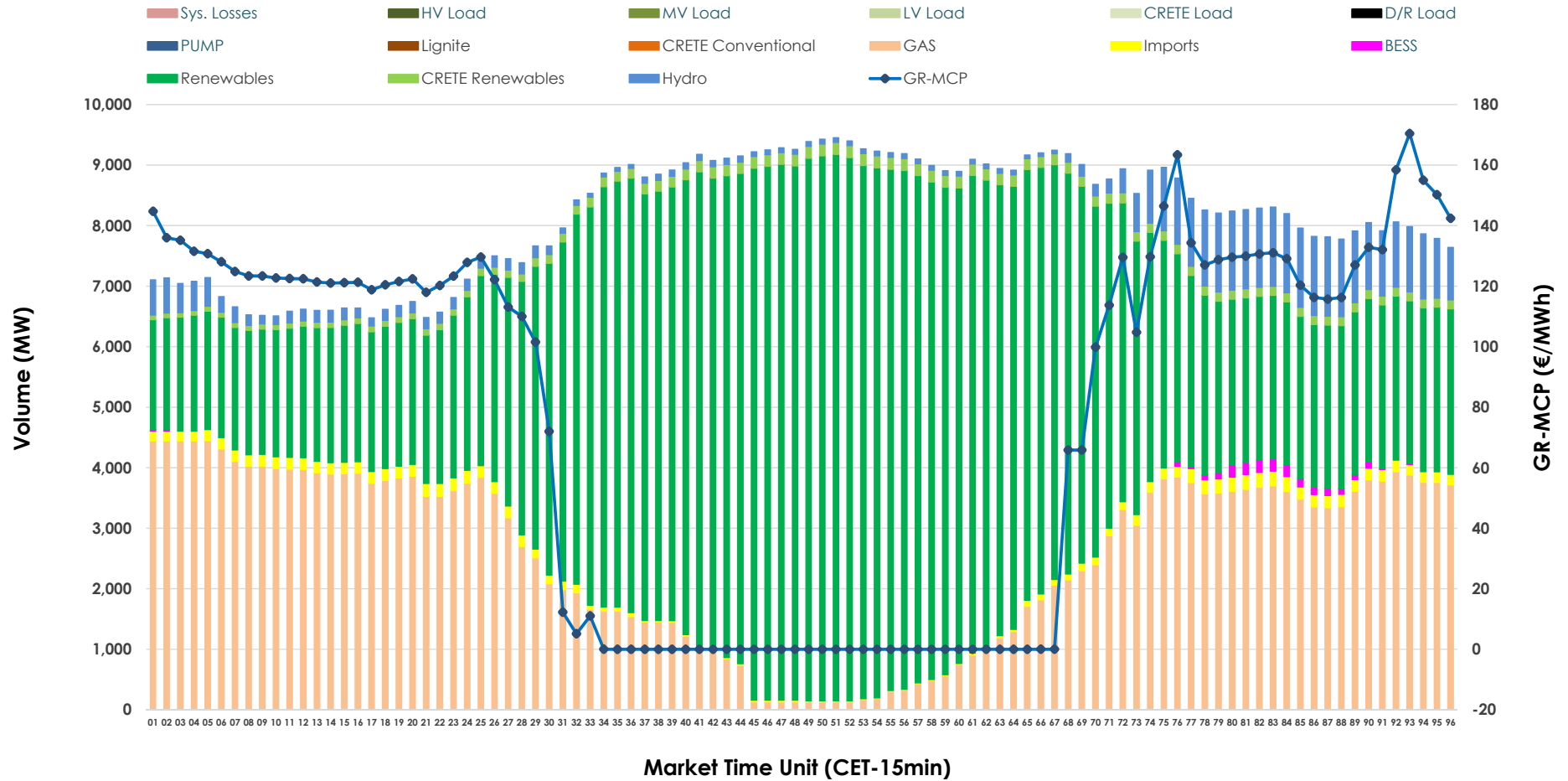


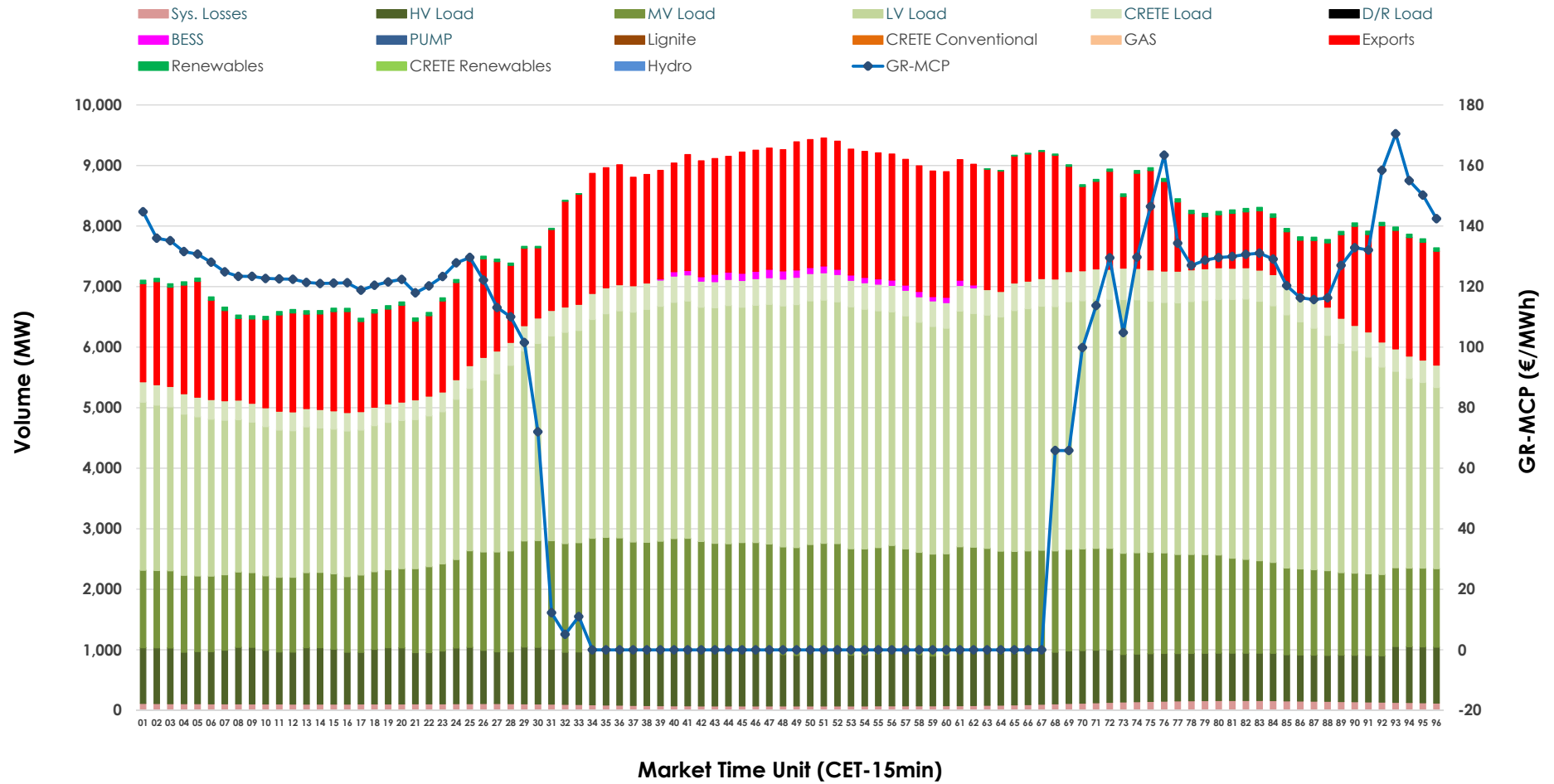


# Day-Ahead Market Outlook

## 18.06.2026 Day-Ahead Market - Sell



### 18.06.2026 Day-Ahead Market - Buy



### GR Bidding Zone Weekly Figures

Delivery Day	12.06	13.06	14.06	15.06	16.06	17.06	18.06
	↗ 16%	↘ -57%	↗ 20%	↗ 45%	↗ 16%	↗ 18%	↘ -36%
<b>Avg.MCP (€/MWh)</b>	116.43	49.69	59.78	86.75	100.92	119.31	76.83
<b>Max.MCP (€/MWh)</b>	171.46	169.10	175.01	180.14	172.17	185.46	170.45
<b>Min.MCP (€/MWh)</b>	60.59	-34.00	-10.00	0.00	15.33	36.53	-0.01
	↘ -4%	↘ -11%	↘ -10%	↗ 24%	↗ 2%	⇒ 0%	↗ 15%
<b>Tot.Vol(GWh)</b>	333.52	297.06	268.05	331.94	339.97	340.24	391.22

### Trades by Order Type

Delivery Day		12.06	13.06	14.06	15.06	16.06	17.06	18.06	
<b>Ord Price Type</b>		<b>Sell &amp; Buy Trades in (GWh) per Price Type</b>							<b>(%)</b>
<b>PPT</b>	(S)	57.093	68.037	56.168	56.785	55.273	57.588	76.033	38.87%
<b>HBD</b>	(S)	63.660	57.846	50.363	71.647	71.874	69.566	86.738	44.34%
<b>BLK</b>	(S)	32.591	14.016	16.742	27.719	33.076	33.077	32.840	16.79%
<b>CPL</b>	(S)	13.414	8.628	10.751	9.821	9.764	9.890	0.000	0.00%
<b>PPT</b>	(B)	16.583	16.499	15.914	16.480	16.485	16.785	16.742	8.56%
<b>HBD</b>	(B)	144.354	123.659	113.815	134.034	146.696	146.808	152.368	77.89%
<b>BLK</b>	(B)	0.000	0.000	0.000	0.000	0.000	0.000	0.000	0.00%
<b>CPL</b>	(B)	5.821	8.370	4.295	15.459	6.806	6.527	26.501	13.55%
		<b>Sell &amp; Buy Orders Traded per Price Type</b>							<b>(%)</b>
<b>PPT</b>	(S)	1672	1583	1528	1498	1584	1618	1634	32.67%
<b>HBD</b>	(S)	3357	2561	2705	3465	3701	3804	3357	67.11%
<b>BLK</b>	(S)	16	8	13	14	14	10	11	0.22%
<b>PPT</b>	(B)	2344	2406	2364	2351	2347	2351	2371	37.26%
<b>HBD</b>	(B)	3843	4001	3902	3805	3818	3769	3993	62.74%
<b>BLK</b>	(B)	0	0	0	0	0	0	0	0.00%

- MCP** Market Clearing Price (€/MWh)
- PPT** Priority Price-Taking
- HBD** Hybrid
- BLK** Block
- CPL** Market Coupling Flow

### Trade's Volume Mix

		Sell - MWh	Buy - MWh	
<b>Lignite</b>	(0.0%)	0	0	(0.0%)
<b>Crete Conv.</b>	(0.0%)	30	0	(0.0%)
<b>Gas</b>	(31.6%)	61,884	0	(0.0%)
<b>Hydro</b>	(5.0%)	9,717	0	(0.0%)
<b>Imports</b>	(1.6%)	3,157		
<b>RES</b>	(59.7%)	116,764	740	(0.4%)
<b>Crete RES</b>	(1.8%)	3,559	0	(0.0%)
<b>BESS</b>	(0.3%)	500	556	(0.3%)
<b>HV Load</b>	(0.0%)	0	20,788	(10.6%)
<b>MV Load</b>	(0.0%)	0	37,531	(19.2%)
<b>LV Load</b>	(0.0%)	0	83,711	(42.8%)
<b>Crete Load</b>	(0.0%)	0	9,936	(5.1%)
<b>Pumping</b>	(0.0%)	0	0	(0.0%)
<b>Exports</b>			39,733	(20.3%)
<b>Sys.Losses</b>	(0.0%)	0	2,617	(1.3%)
<b>D/R Load</b>	(0.0%)	0	0	(0.0%)

