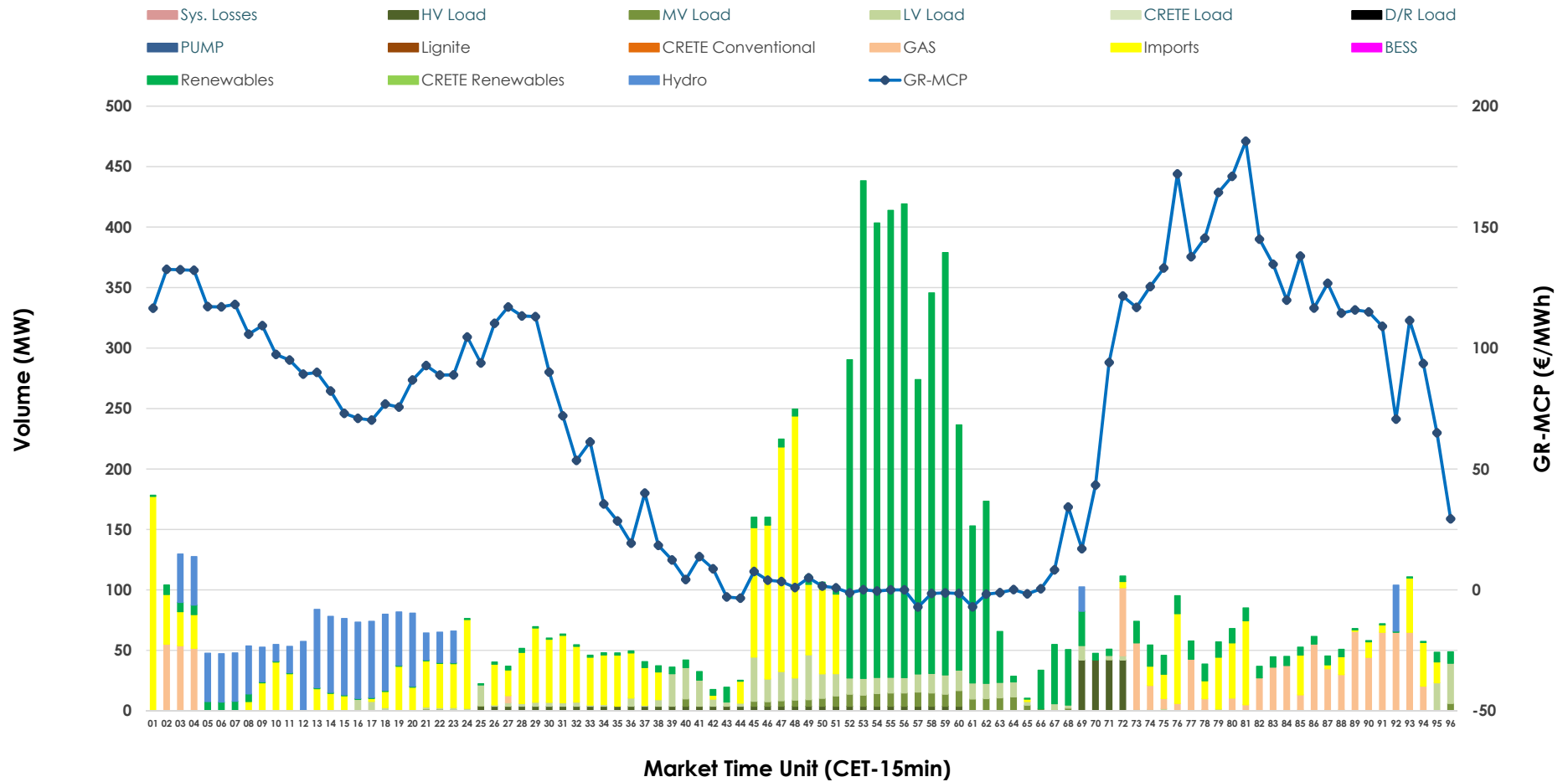


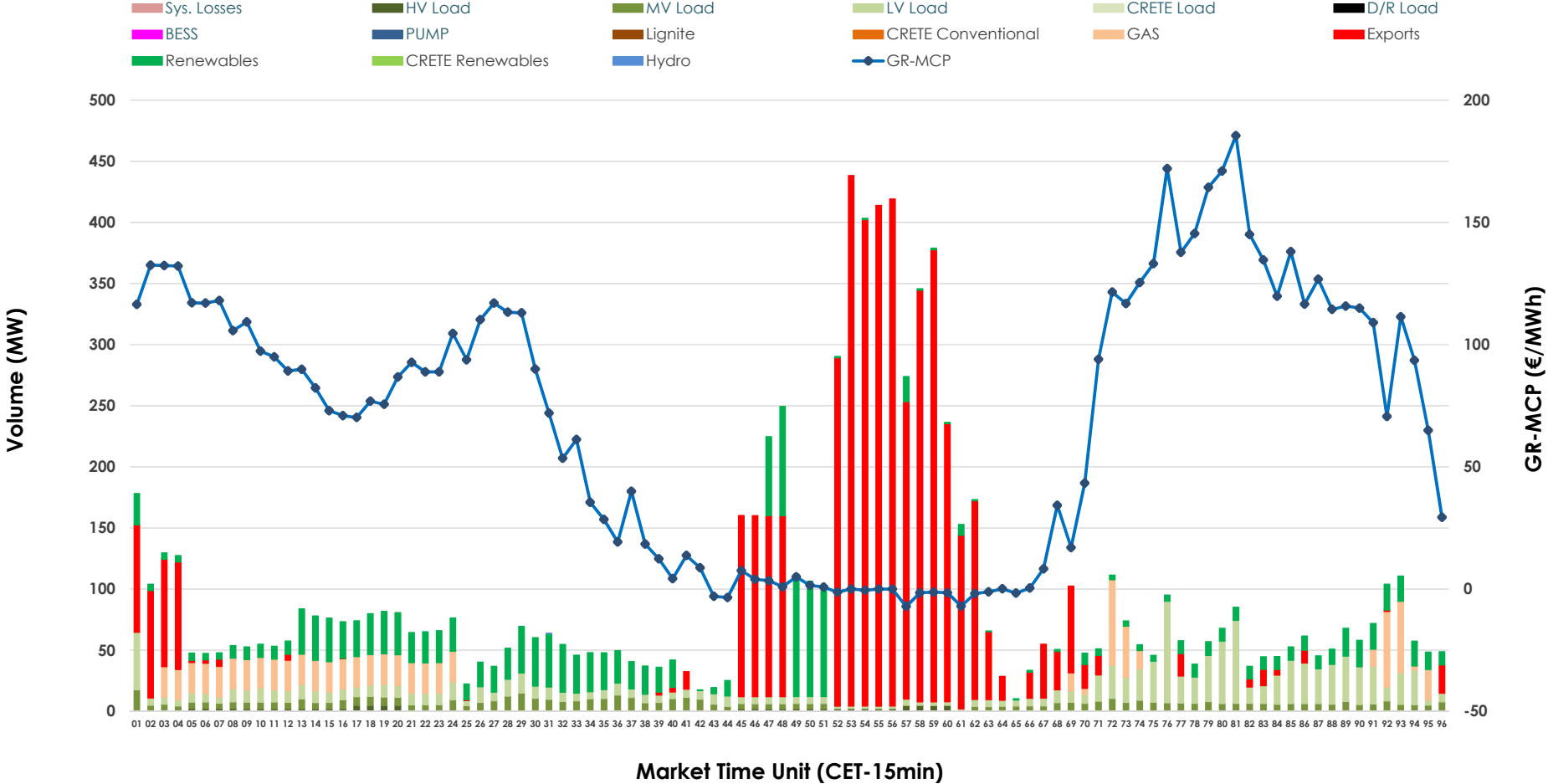


IDA '1' Market Outlook

04.04.2026 IDA '1' Market - Sell



04.04.2026 IDA '1' Market - Buy



GR Bidding Zone Weekly Figures

Delivery Day	29.03	30.03	31.03	01.04	02.04	03.04	04.04
	👇 -16%	👆 66%	👉 11%	👉 17%	👇 -13%	👇 -5%	👇 -46%
Avg.MCP (€/MWh)	71.83	119.14	132.20	154.80	135.24	128.53	69.11
Max.MCP (€/MWh)	149.89	225.95	225.72	247.00	211.87	216.28	185.47
Min.MCP (€/MWh)	-14.99	4.21	91.35	117.05	103.00	14.27	-7.10
	👇 -9%	👉 6%	👆 59%	👆 55%	👇 -39%	👉 2%	👇 -8%
Tot.Vol(GWh)	3.15	3.36	5.35	8.30	5.03	5.11	4.69

Trades by Order Type

Delivery Day		29.03	30.03	31.03	01.04	02.04	03.04	04.04	
Ord Price Type		Sell & Buy Trades in (GWh) per Price Type							(%)
PPT	(S)	0.000	0.000	0.000	0.000	0.000	0.000	0.000	0.00%
HBD	(S)	1.282	1.302	2.355	2.648	1.798	1.416	1.713	73.13%
BLK	(S)	0.000	0.000	0.000	0.000	0.000	0.000	0.000	0.00%
CPL	(S)	0.296	0.377	0.319	1.504	0.717	1.137	0.629	26.87%
PPT	(B)	0.000	0.000	0.000	0.000	0.000	0.000	0.000	0.00%
HBD	(B)	1.228	1.400	2.175	2.116	1.223	1.302	1.153	49.21%
BLK	(B)	0.000	0.000	0.000	0.000	0.000	0.000	0.000	0.00%
CPL	(B)	0.349	0.280	0.499	2.035	1.292	1.251	1.190	50.79%
		Sell & Buy Orders Traded per Price Type							(%)
PPT	(S)	0	0	0	0	0	0	0	0.00%
HBD	(S)	326	176	376	368	277	381	412	100.00%
BLK	(S)	0	0	0	0	0	0	0	0.00%
PPT	(B)	0	0	0	0	0	0	0	0.00%
HBD	(B)	812	860	719	673	831	586	788	100.00%
BLK	(B)	0	0	0	0	0	0	0	0.00%

- MCP** Market Clearing Price (€/MWh)
- PPT** Priority Price-Taking
- HBD** Hybrid
- BLK** Block
- CPL** Market Coupling Flow

Trade's Volume Mix

		Sell - MWh		Buy - MWh	
Lignite	(0.0%)	0	0	0	(0.0%)
Crete Conv.	(0.0%)	0	0	0	(0.0%)
Gas	(10.0%)	233	215		(9.2%)
Hydro	(10.4%)	244	0		(0.0%)
Imports	(26.9%)	629			
RES	(40.8%)	955	437		(18.6%)
Crete RES	(0.0%)	0	0		(0.0%)
BESS	(0.0%)	0	0		(0.0%)
HV Load	(3.2%)	76	22		(1.0%)
MV Load	(2.2%)	51	150		(6.4%)
LV Load	(6.6%)	155	329		(14.0%)
Crete Load	(0.0%)	0	0		(0.0%)
Pumping	(0.0%)	0	0		(0.0%)
Exports				1,190	(50.8%)
Sys.Losses	(0.0%)	0	0		(0.0%)
D/R Load	(0.0%)	0	0		(0.0%)

