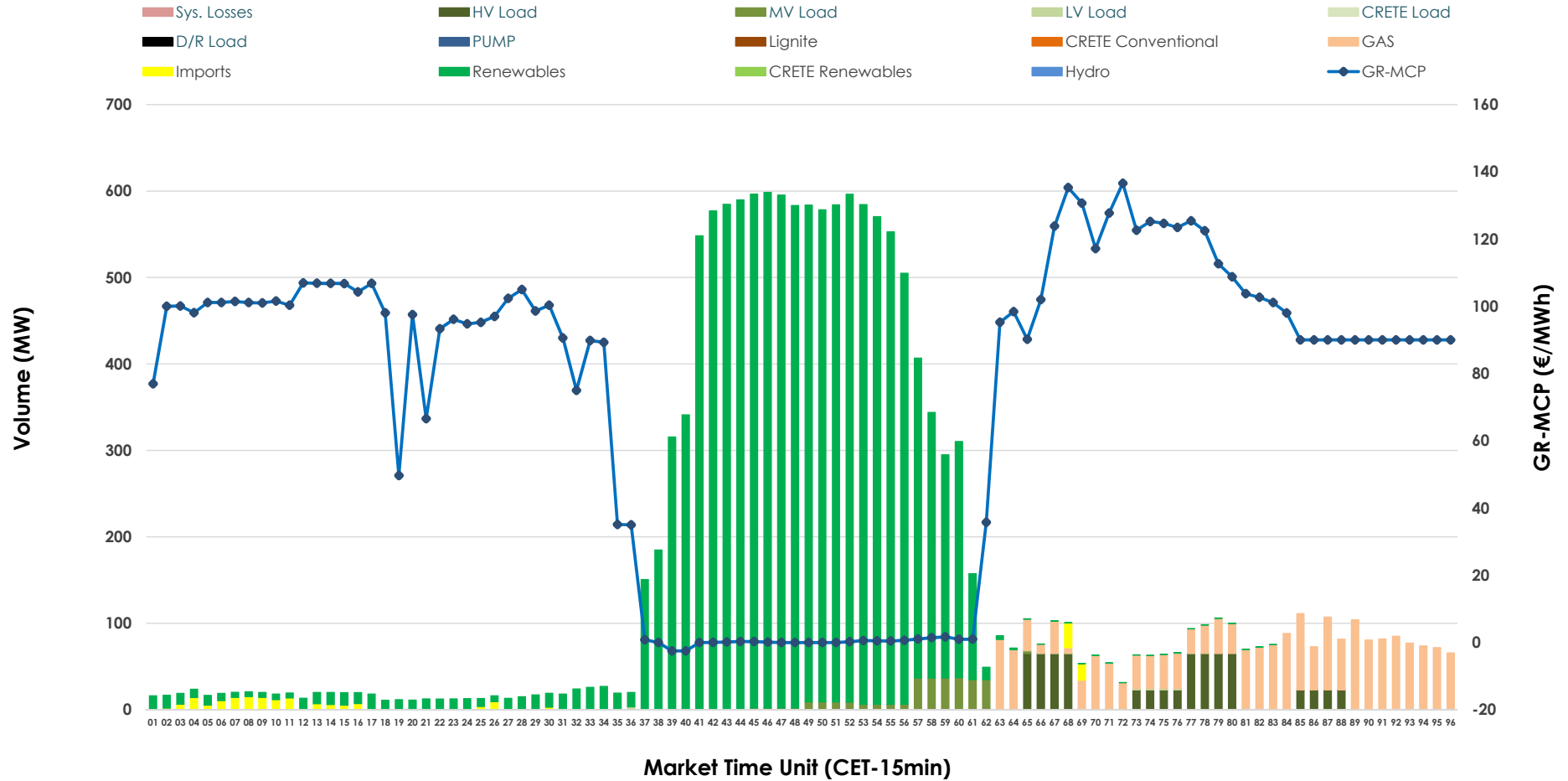


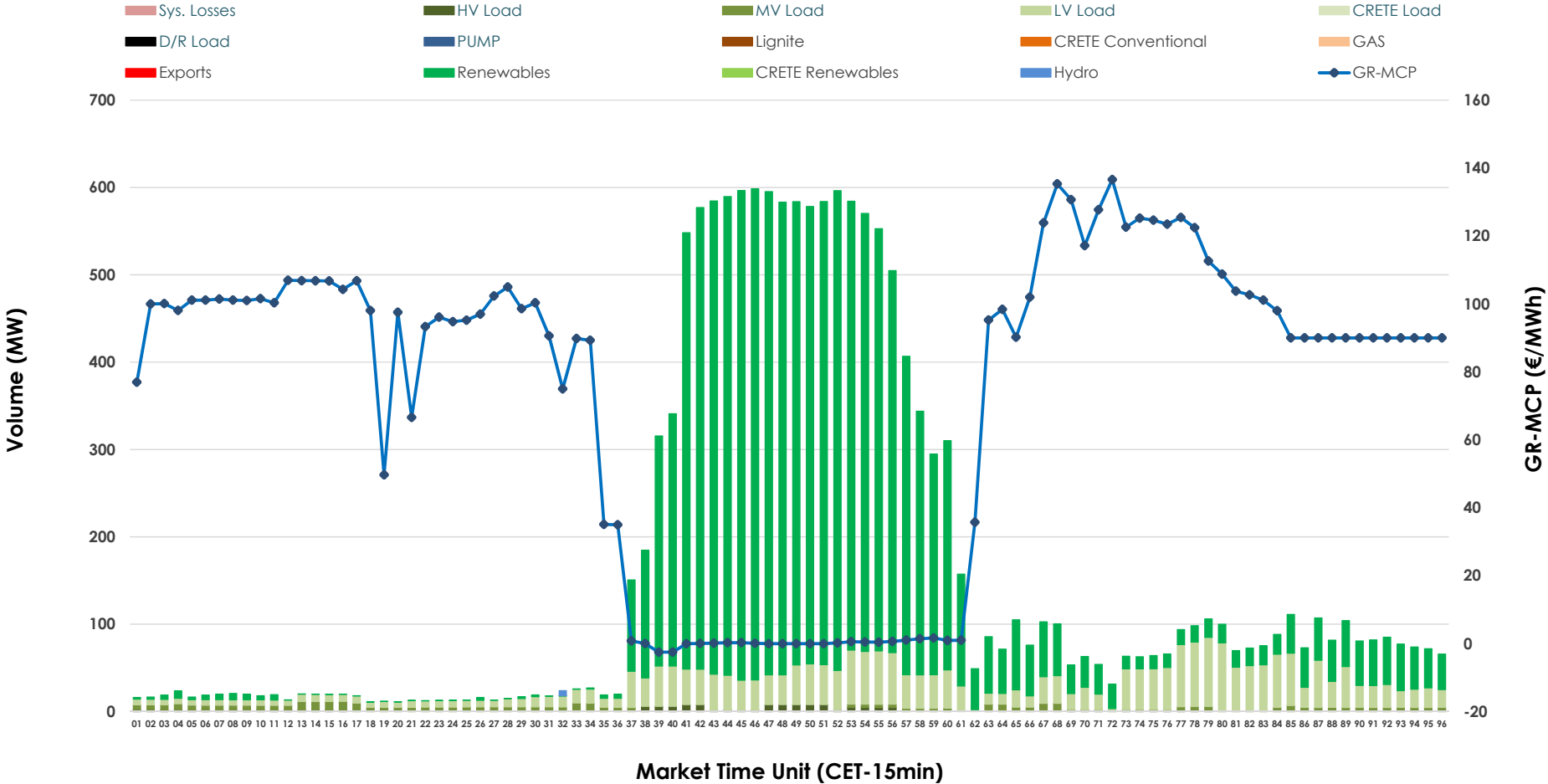


IDA '1' Market Outlook

07.02.2026 IDA '1' Market - Sell



07.02.2026 IDA '1' Market - Buy



GR Bidding Zone Weekly Figures

Delivery Day	01.02	02.02	03.02	04.02	05.02	06.02	07.02
	↗ 1%	↗ 18%	→ 0%	↘ -23%	↗ 9%	↘ -5%	↘ -23%
Avg.MCP (€/MWh)	100.31	118.10	118.41	90.74	99.13	94.63	72.71
Max.MCP (€/MWh)	143.74	251.72	216.88	141.94	158.84	144.90	136.60
Min.MCP (€/MWh)	60.00	80.04	81.53	24.58	57.50	8.40	-2.50
	↑ 58%	↓ -36%	↑ 38%	↗ 12%	↗ 9%	↘ -26%	↑ 145%
Tot.Vol(GWh)	3.89	2.48	3.43	3.83	4.16	3.09	7.57

Trades by Order Type

Delivery Day		01.02	02.02	03.02	04.02	05.02	06.02	07.02	
Ord Price Type		Sell & Buy Trades in (GWh) per Price Type							(%)
PPT	(S)	0.000	0.000	0.000	0.000	0.000	0.000	0.000	0.00%
HBD	(S)	1.868	0.922	1.212	1.828	1.758	1.546	3.734	98.71%
BLK	(S)	0.000	0.000	0.000	0.000	0.000	0.000	0.000	0.00%
CPL	(S)	0.077	0.320	0.501	0.088	0.324	0.000	0.049	1.29%
PPT	(B)	0.000	0.000	0.000	0.000	0.000	0.000	0.000	0.00%
HBD	(B)	1.156	1.163	1.262	1.784	2.043	1.267	3.783	100.00%
BLK	(B)	0.000	0.000	0.000	0.000	0.000	0.000	0.000	0.00%
CPL	(B)	0.789	0.079	0.451	0.132	0.039	0.279	0.000	0.00%
		Sell & Buy Orders Traded per Price Type							(%)
PPT	(S)	0	0	0	0	0	0	0	0.00%
HBD	(S)	73	81	124	273	226	242	196	100.00%
BLK	(S)	0	0	0	0	0	0	0	0.00%
PPT	(B)	0	0	0	0	0	0	0	0.00%
HBD	(B)	726	732	920	1081	900	678	453	100.00%
BLK	(B)	0	0	0	0	0	0	0	0.00%

- MCP** Market Clearing Price (€/MWh)
- PPT** Priority Price-Taking
- HBD** Hybrid
- BLK** Block
- CPL** Market Coupling Flow

Trade's Volume Mix

		Sell - MWh	Buy - MWh	
Lignite	(0.0%)	0	0	(0.0%)
Crete Conv.	(0.0%)	0	0	(0.0%)
Gas	(12.8%)	486	0	(0.0%)
Hydro	(0.0%)	0	1	(0.0%)
Imports	(1.3%)	49		
RES	(79.2%)	2,995	2,986	(78.9%)
Crete RES	(0.0%)	0	0	(0.0%)
HV Load	(4.7%)	176	39	(1.0%)
MV Load	(1.9%)	73	96	(2.5%)
LV Load	(0.1%)	5	661	(17.5%)
Crete Load	(0.0%)	0	0	(0.0%)
Pumping	(0.0%)	0	0	(0.0%)
Exports			0	(0.0%)
Sys.Losses	(0.0%)	0	0	(0.0%)
D/R Load	(0.0%)	0	0	(0.0%)

