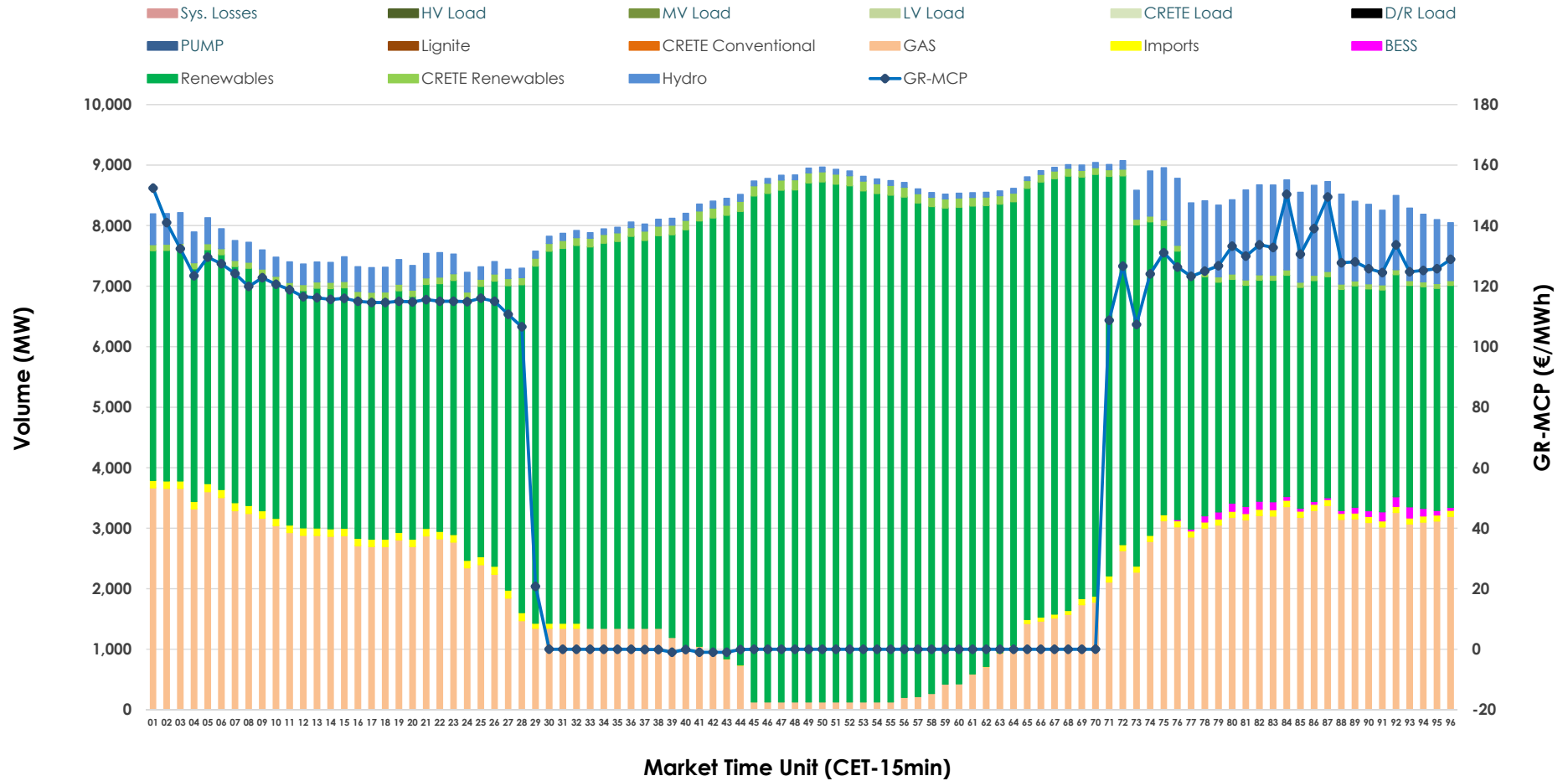


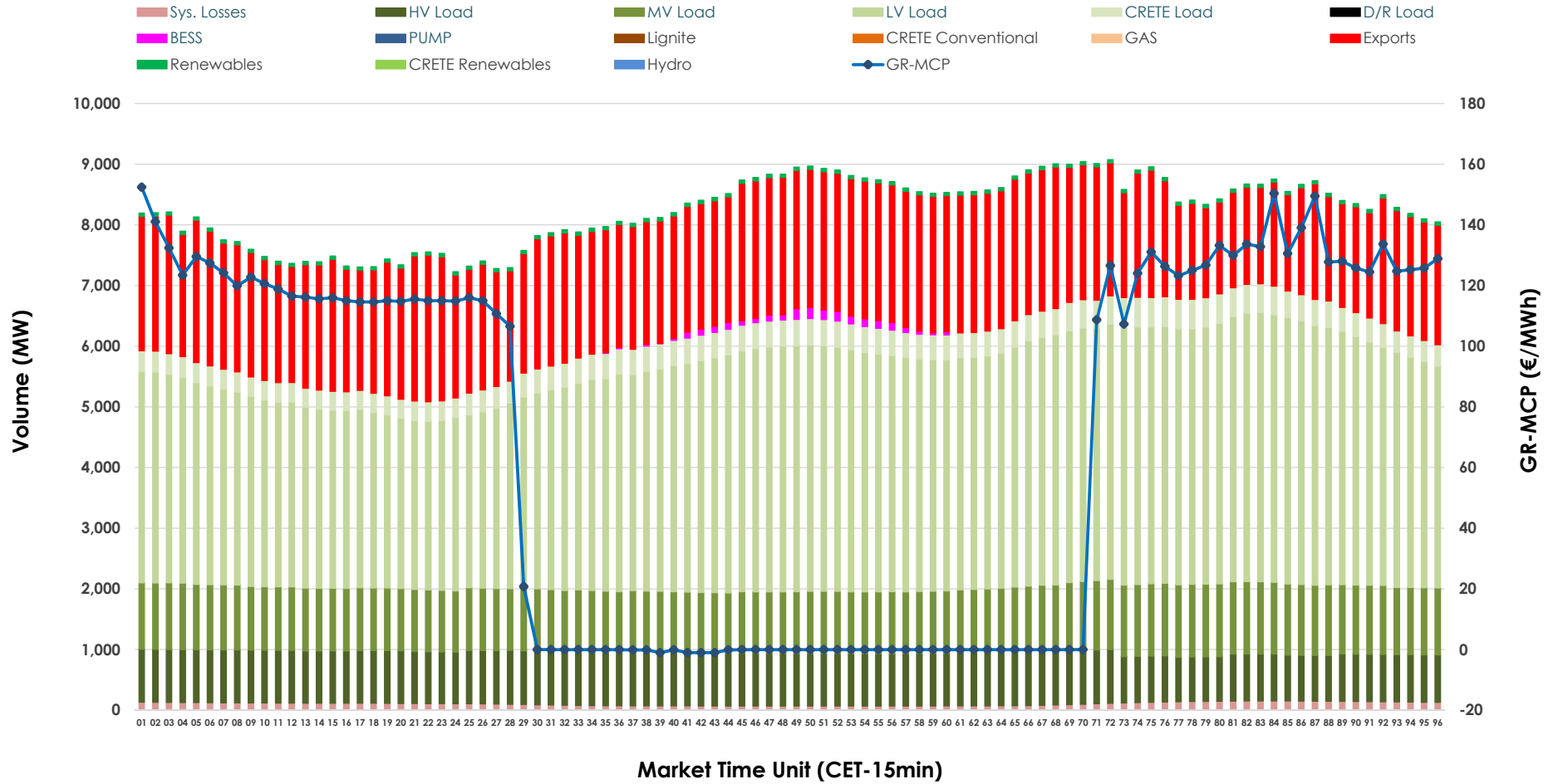


Day-Ahead Market Outlook

28.06.2026 Day-Ahead Market - Sell



28.06.2026 Day-Ahead Market - Buy



GR Bidding Zone Weekly Figures

Delivery Day	22.06	23.06	24.06	25.06	26.06	27.06	28.06
	↗ 21%	↕ 49%	↗ 13%	↘ -13%	↘ -28%	↘ -15%	↘ -6%
Avg.MCP (€/MWh)	82.87	123.69	139.85	121.33	87.69	74.45	69.97
Max.MCP (€/MWh)	191.08	298.03	300.00	262.00	186.07	160.00	152.40
Min.MCP (€/MWh)	-0.01	0.00	40.00	11.09	-0.01	-0.01	-1.00
	↗ 10%	↗ 1%	↔ -1%	↗ 1%	↗ 5%	↘ -3%	↘ -4%
Tot.Vol(GWh)	398.29	403.96	401.62	406.63	425.18	414.09	395.81

Trades by Order Type

Delivery Day		22.06	23.06	24.06	25.06	26.06	27.06	28.06	
Ord Price Type		Sell & Buy Trades in (GWh) per Price Type							(%)
PPT	(S)	81.817	71.841	63.403	66.832	80.911	90.606	92.170	46.57%
HBD	(S)	87.242	90.967	82.325	86.427	93.814	90.634	79.054	39.95%
BLK	(S)	29.167	37.544	52.636	47.369	37.855	25.803	26.679	13.48%
CPL	(S)	0.919	1.628	2.445	2.690	0.011	0.000	0.000	0.00%
PPT	(B)	17.878	17.854	18.089	18.356	19.094	19.723	18.112	9.15%
HBD	(B)	155.517	162.194	160.856	164.810	166.579	159.315	146.652	74.10%
BLK	(B)	0.000	0.000	0.000	0.000	0.000	0.000	0.000	0.00%
CPL	(B)	25.750	21.932	21.864	20.151	26.918	28.005	33.138	16.74%
		Sell & Buy Orders Traded per Price Type							(%)
PPT	(S)	1652	1668	1685	1752	1776	1784	1769	38.66%
HBD	(S)	3199	3750	3993	3869	3397	3281	2794	61.06%
BLK	(S)	10	16	23	17	12	9	13	0.28%
PPT	(B)	2443	2432	2392	2503	2523	2561	2556	38.65%
HBD	(B)	4013	3956	3854	4116	4186	4066	4057	61.35%
BLK	(B)	0	0	0	0	0	0	0	0.00%

- MCP** Market Clearing Price (€/MWh)
- PPT** Priority Price-Taking
- HBD** Hybrid
- BLK** Block
- CPL** Market Coupling Flow

Trade's Volume Mix

	Sell - MWh	Buy - MWh	
Lignite (0.0%)	0	0	(0.0%)
Crete Conv. (0.0%)	0	0	(0.0%)
Gas (24.6%)	48,741	0	(0.0%)
Hydro (5.5%)	10,799	0	(0.0%)
Imports (0.9%)	1,746		
RES (67.3%)	133,248	1,296	(0.7%)
Crete RES (1.5%)	2,880	0	(0.0%)
BESS (0.2%)	490	563	(0.3%)
HV Load (0.0%)	0	20,273	(10.2%)
MV Load (0.0%)	0	25,745	(13.0%)
LV Load (0.0%)	0	88,467	(44.7%)
Crete Load (0.0%)	0	9,590	(4.8%)
Pumping (0.0%)	0	0	(0.0%)
Exports		49,464	(25.0%)
Sys.Losses (0.0%)	0	2,505	(1.3%)
D/R Load (0.0%)	0	0	(0.0%)

