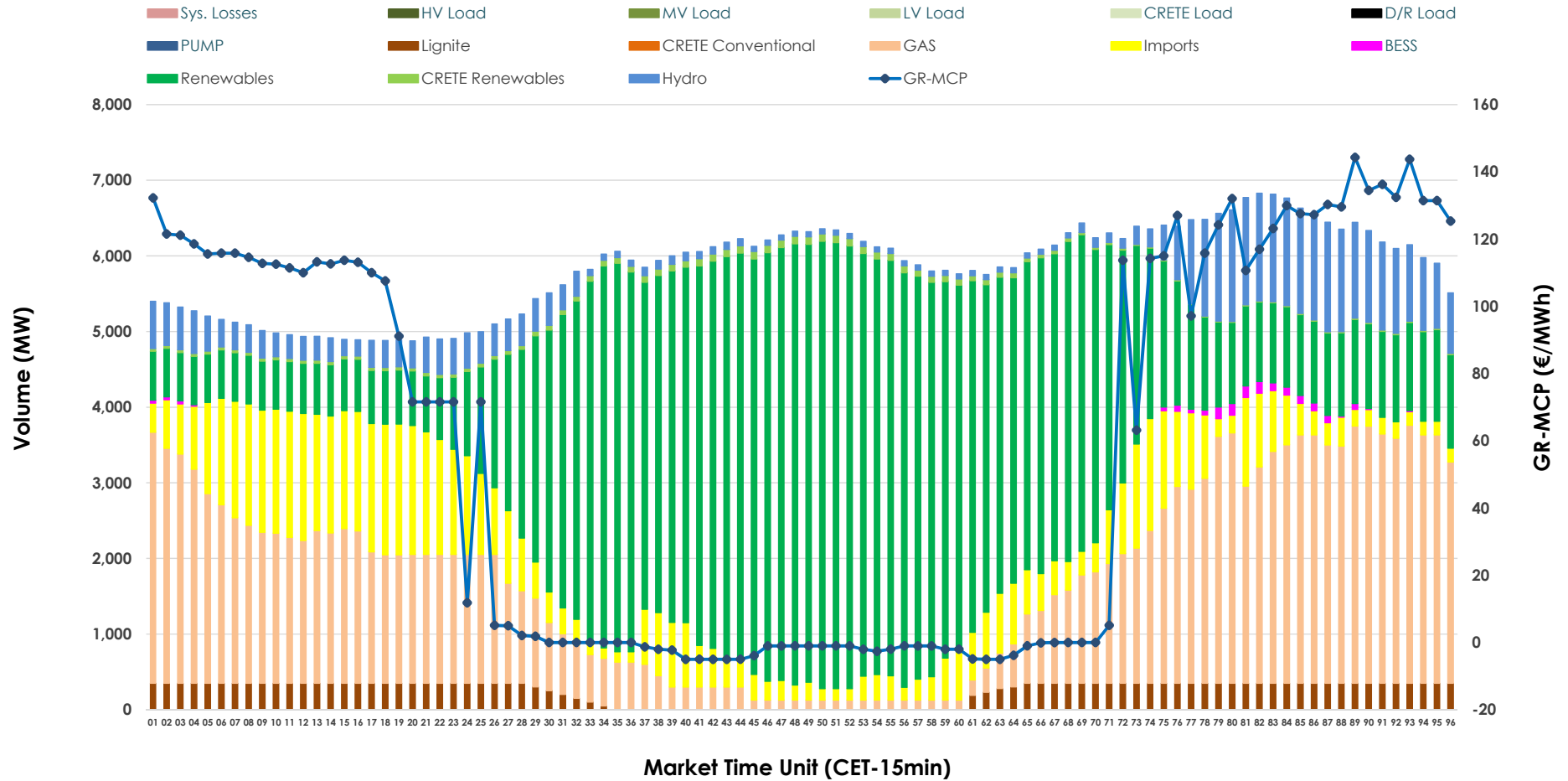


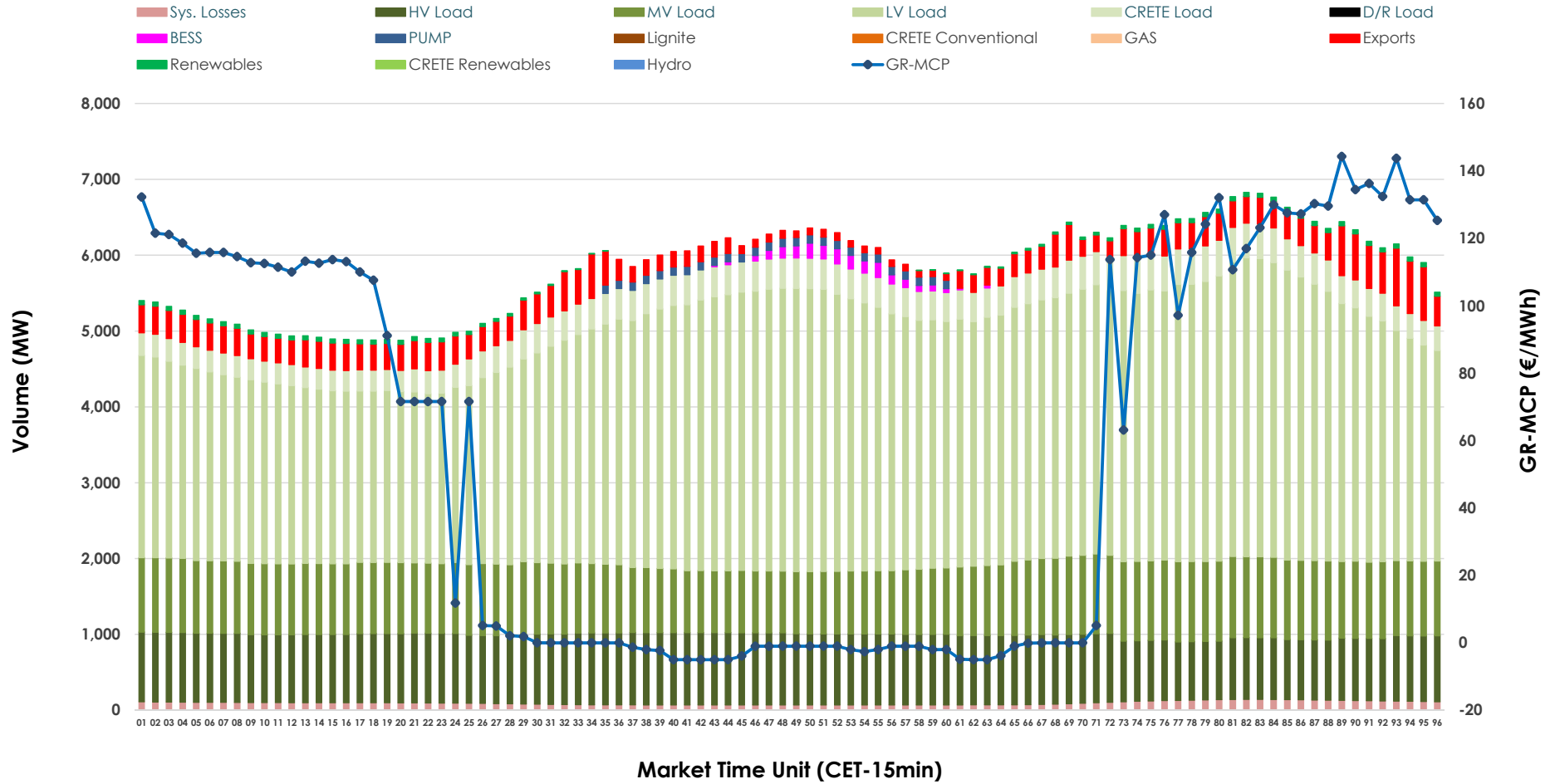


# Day-Ahead Market Outlook

07.06.2026 Day-Ahead Market - Sell



### 07.06.2026 Day-Ahead Market - Buy



### GR Bidding Zone Weekly Figures

Delivery Day	01.06	02.06	03.06	04.06	05.06	06.06	07.06
	↗ 11%	↘ -1%	↘ -11%	↗ 6%	↗ 26%	↘ -29%	↘ -29%
<b>Avg.MCP (€/MWh)</b>	97.12	96.31	85.72	91.05	114.69	81.97	57.86
<b>Max.MCP (€/MWh)</b>	185.00	171.60	150.00	210.77	182.76	156.59	144.30
<b>Min.MCP (€/MWh)</b>	0.00	0.00	0.00	5.44	18.59	0.00	-5.00
	↗ 11%	↗ 5%	↗ 3%	↘ -11%	↘ -2%	↘ -4%	↘ -9%
<b>Tot.Vol(GWh)</b>	339.56	357.43	367.73	327.39	321.16	306.90	280.10

### Trades by Order Type

Delivery Day		01.06	02.06	03.06	04.06	05.06	06.06	07.06	
Ord Price Type		Sell & Buy Trades in (GWh) per Price Type							(%)
<b>PPT</b>	(S)	62.576	64.590	68.089	64.441	58.338	56.563	59.103	42.20%
<b>HBD</b>	(S)	76.261	80.307	78.424	66.852	70.853	63.063	47.065	33.61%
<b>BLK</b>	(S)	30.945	33.821	37.350	29.365	28.875	30.143	21.989	15.70%
<b>CPL</b>	(S)	0.000	0.000	0.000	3.038	2.516	3.683	11.896	8.49%
<b>PPT</b>	(B)	15.188	15.274	15.118	16.151	15.503	15.317	16.008	11.43%
<b>HBD</b>	(B)	128.365	135.591	142.718	141.396	136.467	128.886	123.201	87.97%
<b>BLK</b>	(B)	0.000	0.000	0.000	0.000	0.000	0.000	0.000	0.00%
<b>CPL</b>	(B)	26.229	27.852	26.028	6.148	8.612	9.249	0.843	0.60%
		Sell & Buy Orders Traded per Price Type							(%)
<b>PPT</b>	(S)	1750	1754	1740	1703	1718	1725	1683	37.68%
<b>HBD</b>	(S)	3394	3467	3314	3595	3574	3457	2774	62.10%
<b>BLK</b>	(S)	15	15	17	13	11	13	10	0.22%
<b>PPT</b>	(B)	2384	2392	2388	2413	2359	2329	2349	37.89%
<b>HBD</b>	(B)	3831	3932	3986	4066	3898	3900	3851	62.11%
<b>BLK</b>	(B)	0	0	0	0	0	0	0	0.00%

- MCP** Market Clearing Price (€/MWh)
- PPT** Priority Price-Taking
- HBD** Hybrid
- BLK** Block
- CPL** Market Coupling Flow

### Trade's Volume Mix

		Sell - MWh	Buy - MWh	
<b>Lignite</b>	(4.1%)	5,765	0	(0.0%)
<b>Crete Conv.</b>	(0.0%)	0	0	(0.0%)
<b>Gas</b>	(27.0%)	37,822	0	(0.0%)
<b>Hydro</b>	(7.6%)	10,666	0	(0.0%)
<b>Imports</b>	(12.6%)	17,641		
<b>RES</b>	(47.5%)	66,534	773	(0.6%)
<b>Crete RES</b>	(0.9%)	1,216	0	(0.0%)
<b>BESS</b>	(0.3%)	408	543	(0.4%)
<b>HV Load</b>	(0.0%)	0	21,493	(15.3%)
<b>MV Load</b>	(0.0%)	0	22,640	(16.2%)
<b>LV Load</b>	(0.0%)	0	75,058	(53.6%)
<b>Crete Load</b>	(0.0%)	0	8,941	(6.4%)
<b>Pumping</b>	(0.0%)	0	715	(0.5%)
<b>Exports</b>			7,604	(5.4%)
<b>Sys.Losses</b>	(0.0%)	0	2,285	(1.6%)
<b>D/R Load</b>	(0.0%)	0	0	(0.0%)

