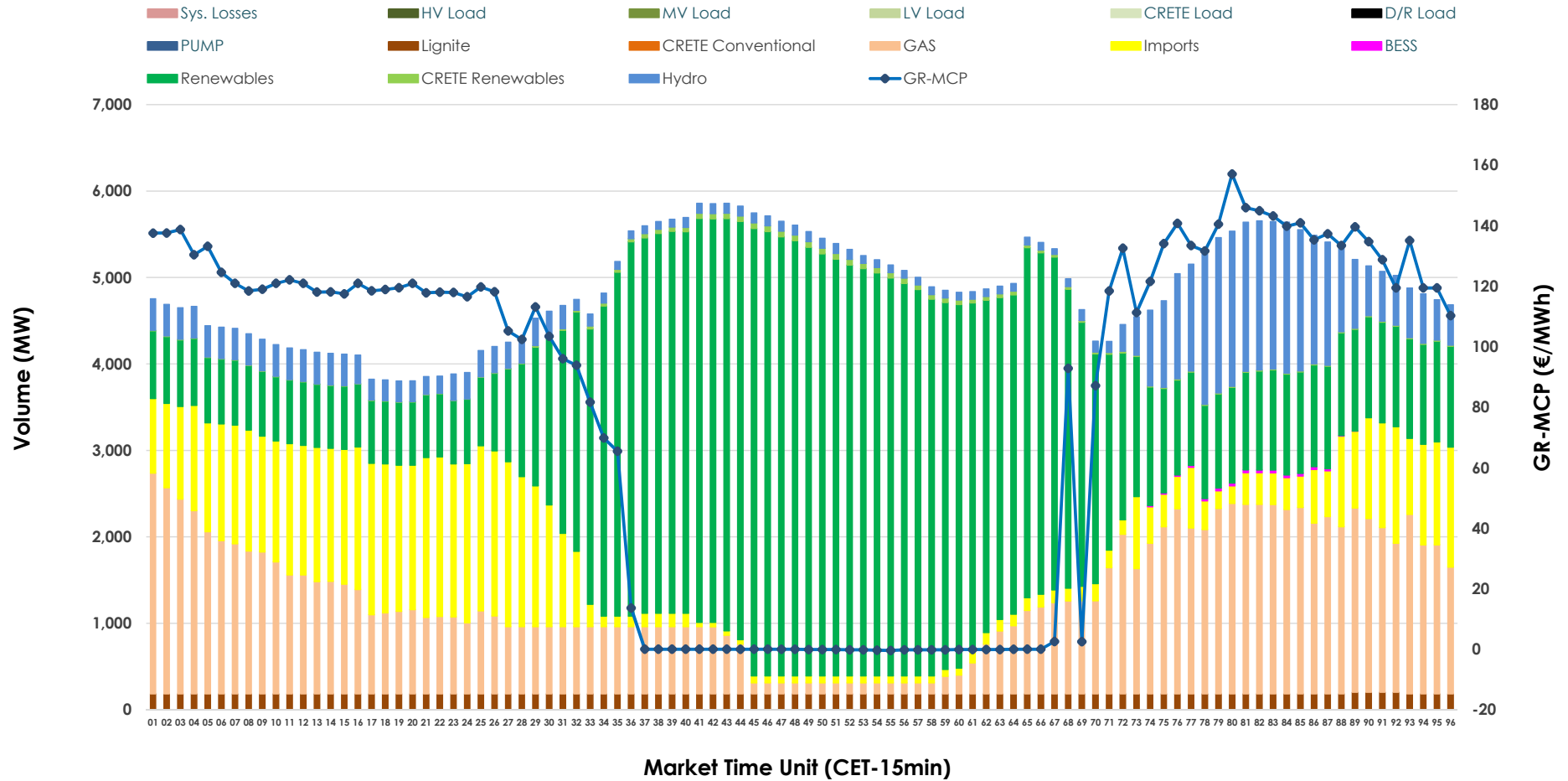


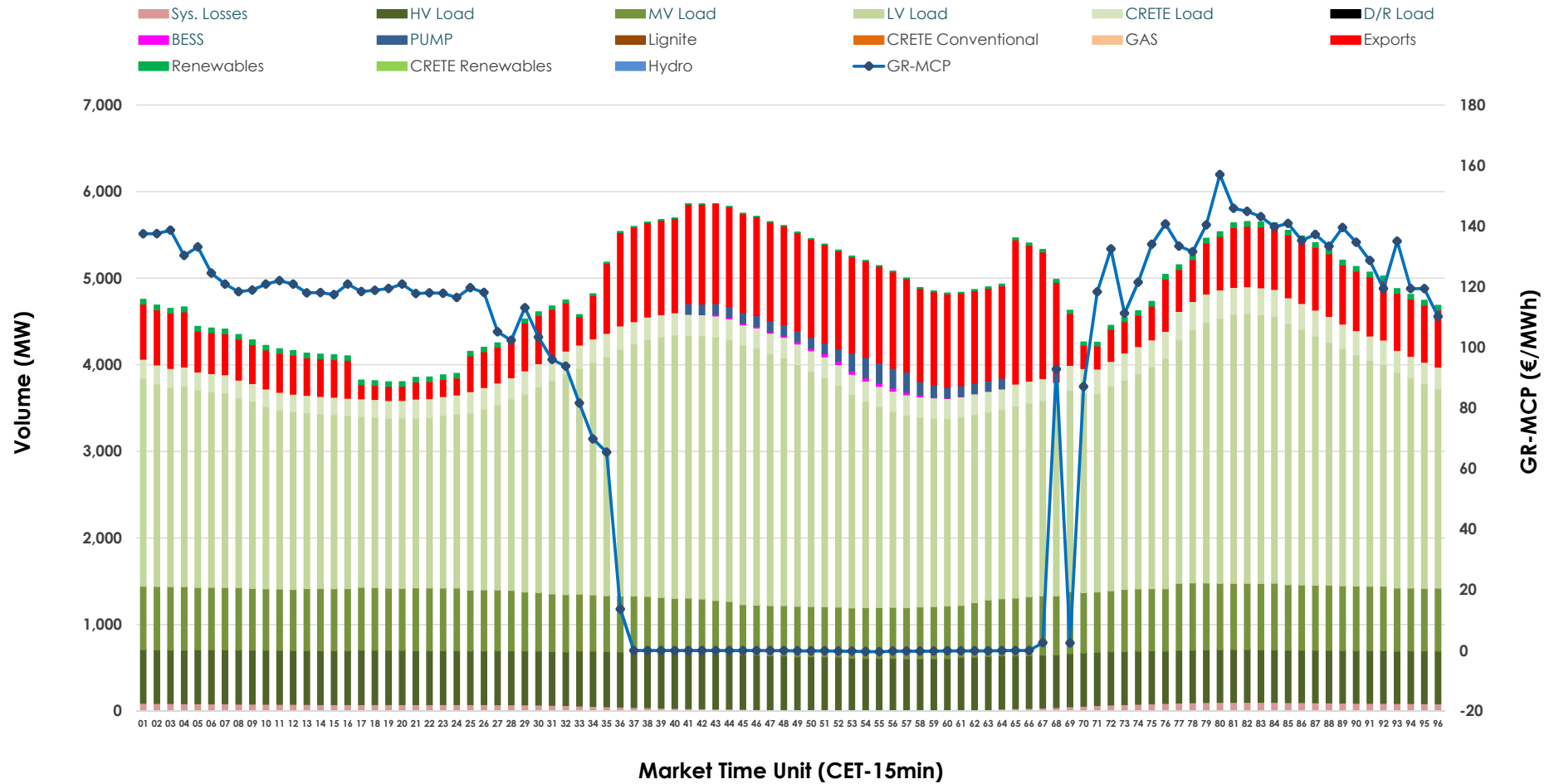


Day-Ahead Market Outlook

12.04.2026 Day-Ahead Market - Sell



12.04.2026 Day-Ahead Market - Buy



GR Bidding Zone Weekly Figures

Delivery Day	06.04	07.04	08.04	09.04	10.04	11.04	12.04
	↑ 126%	↔ 21%	↓ -6%	↔ 17%	↓ 1%	↓ -8%	↓ -9%
Avg.MCP (€/MWh)	70.35	85.32	80.41	94.31	95.30	87.39	79.79
Max.MCP (€/MWh)	185.89	204.50	188.91	186.55	195.45	187.36	157.05
Min.MCP (€/MWh)	-25.02	-5.30	-10.00	-0.20	-11.00	0.00	-0.41
	↔ 9%	↔ 8%	↓ -3%	↔ 0%	↓ -5%	↓ -16%	↓ -4%
Tot.Vol(GWh)	294.16	316.70	308.22	307.58	293.32	245.55	234.70

Trades by Order Type

Delivery Day		06.04	07.04	08.04	09.04	10.04	11.04	12.04	
Ord Price Type		Sell & Buy Trades in (GWh) per Price Type							(%)
PPT	(S)	55.691	50.282	57.974	46.078	45.843	36.771	39.180	33.39%
HBD	(S)	52.265	65.823	65.356	66.565	63.588	51.590	49.183	41.91%
BLK	(S)	12.305	26.897	23.861	29.612	27.799	23.858	17.179	14.64%
CPL	(S)	26.818	15.351	6.920	11.536	9.432	10.557	11.806	10.06%
PPT	(B)	13.969	14.822	14.696	14.403	14.353	13.243	12.221	10.41%
HBD	(B)	131.370	133.078	129.253	128.131	117.012	106.422	96.846	82.53%
BLK	(B)	0.000	0.000	0.000	0.000	0.000	0.000	0.000	0.00%
CPL	(B)	1.739	10.452	10.162	11.257	15.297	3.111	8.282	7.06%
		Sell & Buy Orders Traded per Price Type							(%)
PPT	(S)	1525	1462	1471	1484	1489	1463	1465	36.15%
HBD	(S)	2384	2864	2687	3007	2818	2888	2576	63.56%
BLK	(S)	9	12	10	14	13	12	12	0.30%
PPT	(B)	2307	2350	2364	2345	2358	2369	2374	36.15%
HBD	(B)	3974	4032	4113	4014	4151	4083	4193	63.85%
BLK	(B)	0	0	0	0	0	0	0	0.00%

- MCP** Market Clearing Price (€/MWh)
- PPT** Priority Price-Taking
- HBD** Hybrid
- BLK** Block
- CPL** Market Coupling Flow

Trade's Volume Mix

		Sell - MWh	Buy - MWh	
Lignite	(3.8%)	4,410	0	(0.0%)
Crete Conv.	(0.0%)	0	0	(0.0%)
Gas	(23.7%)	27,859	0	(0.0%)
Hydro	(8.8%)	10,355	0	(0.0%)
Imports	(14.8%)	17,376		
RES	(48.3%)	56,635	859	(0.7%)
Crete RES	(0.5%)	617	0	(0.0%)
BESS	(0.1%)	97	115	(0.1%)
HV Load	(0.0%)	0	14,814	(12.6%)
MV Load	(0.0%)	0	16,468	(14.0%)
LV Load	(0.0%)	0	59,340	(50.6%)
Crete Load	(0.0%)	0	6,051	(5.2%)
Pumping	(0.0%)	0	894	(0.8%)
Exports			17,343	(14.8%)
Sys.Losses	(0.0%)	0	1,465	(1.2%)
D/R Load	(0.0%)	0	0	(0.0%)

