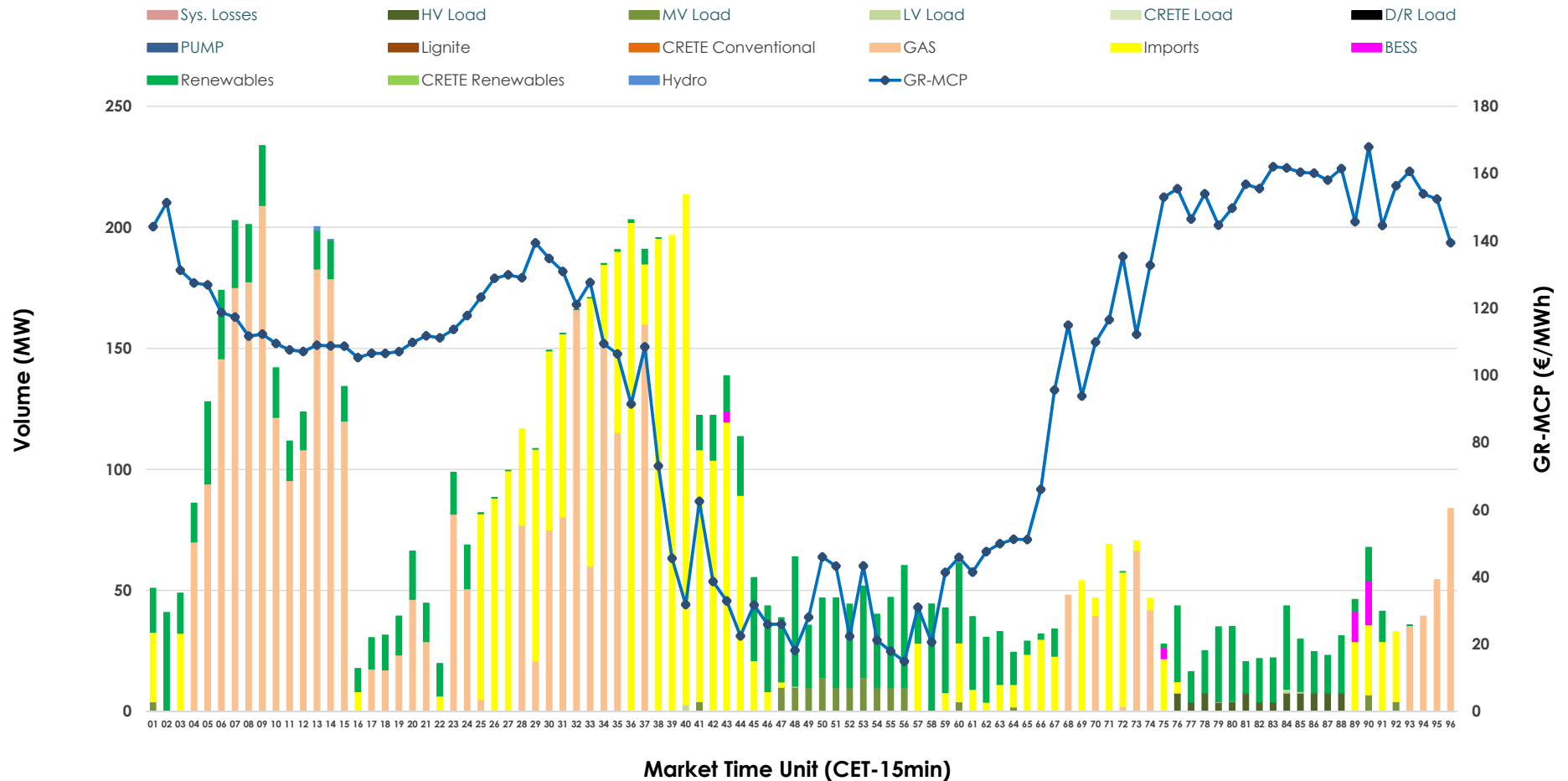


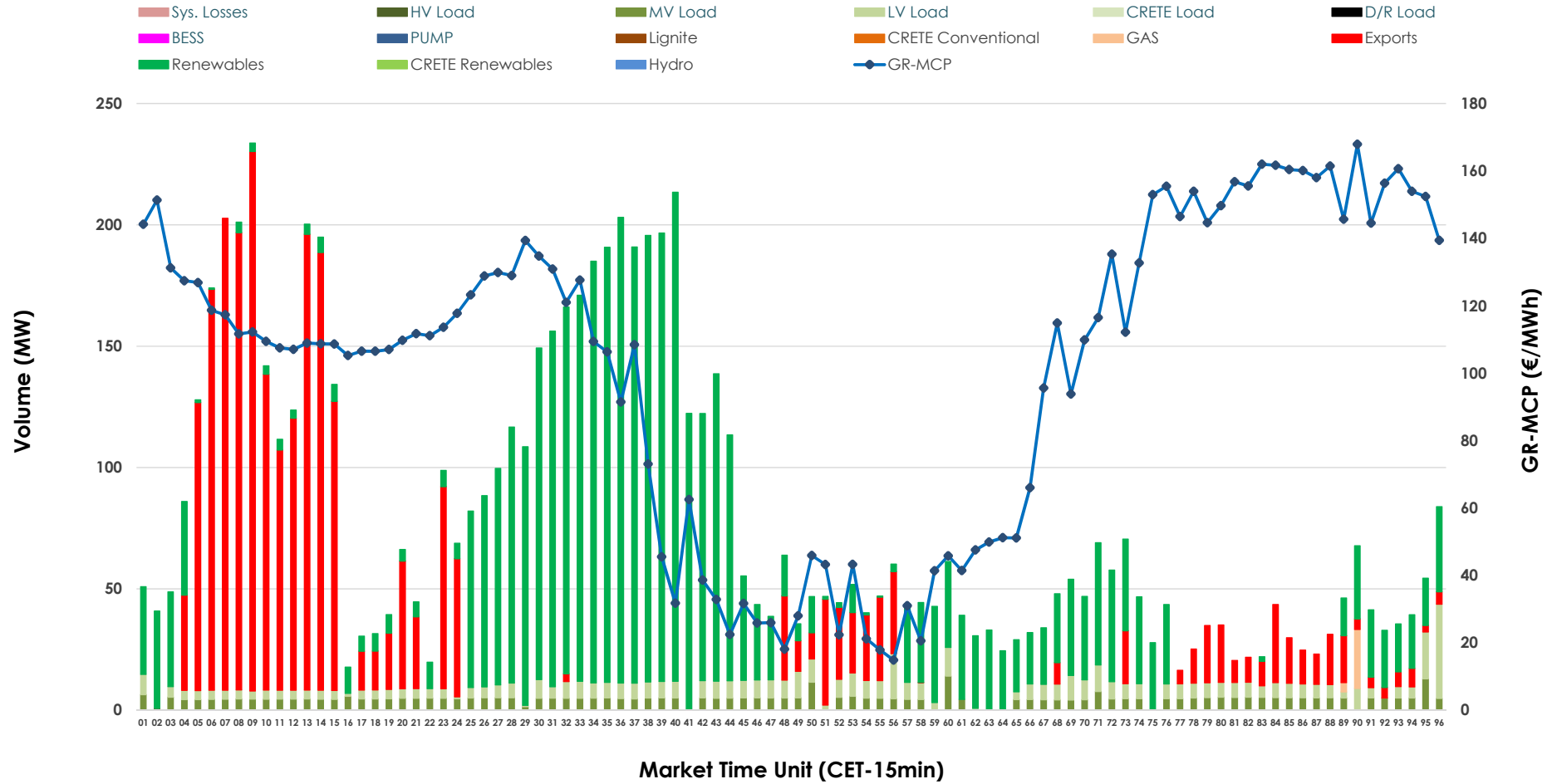


IDA '2' Market Outlook

16.06.2026 IDA '2' Market - Sell



16.06.2026 IDA '2' Market - Buy



GR Bidding Zone Weekly Figures

Delivery Day	10.06	11.06	12.06	13.06	14.06	15.06	16.06
	👉 -9%	👉 -2%	👈 8%	👇 -56%	👈 15%	👆 47%	👈 22%
Avg.MCP (€/MWh)	106.30	104.28	112.76	49.42	56.66	83.20	101.69
Max.MCP (€/MWh)	197.85	162.31	172.17	163.27	164.20	177.25	167.90
Min.MCP (€/MWh)	-5.84	25.13	65.03	-27.97	-15.01	-5.15	14.88
	👉 0%	👆 75%	👇 -35%	👇 -40%	👆 56%	👉 -29%	👉 -2%
Tot.Vol(GWh)	5.19	9.06	5.91	3.55	5.52	3.92	3.84

Trades by Order Type

Delivery Day		10.06	11.06	12.06	13.06	14.06	15.06	16.06	
Ord Price Type		Sell & Buy Trades in (GWh) per Price Type							(%)
PPT	(S)	0.000	0.000	0.000	0.000	0.000	0.000	0.000	0.00%
HBD	(S)	2.001	4.165	2.211	1.203	2.068	0.869	1.266	65.91%
BLK	(S)	0.000	0.000	0.000	0.000	0.000	0.000	0.000	0.00%
CPL	(S)	0.594	0.363	0.743	0.572	0.694	1.091	0.655	34.09%
PPT	(B)	0.000	0.000	0.000	0.000	0.000	0.000	0.000	0.00%
HBD	(B)	0.623	1.521	1.699	1.692	1.349	1.788	1.279	66.57%
BLK	(B)	0.000	0.000	0.000	0.000	0.000	0.000	0.000	0.00%
CPL	(B)	1.972	3.007	1.256	0.083	1.413	0.171	0.642	33.43%
		Sell & Buy Orders Traded per Price Type							(%)
PPT	(S)	0	0	0	0	0	0	0	0.00%
HBD	(S)	306	557	259	254	284	145	266	100.00%
BLK	(S)	0	0	0	0	0	0	0	0.00%
PPT	(B)	0	0	0	0	0	0	0	0.00%
HBD	(B)	344	505	425	356	355	719	449	100.00%
BLK	(B)	0	0	0	0	0	0	0	0.00%

- MCP** Market Clearing Price (€/MWh)
- PPT** Priority Price-Taking
- HBD** Hybrid
- BLK** Block
- CPL** Market Coupling Flow

Trade's Volume Mix

	Sell - MWh	Buy - MWh	
Lignite (0.0%)	0	0	(0.0%)
Crete Conv. (0.0%)	0	0	(0.0%)
Gas (42.5%)	816	7	(0.4%)
Hydro (0.0%)	0	0	(0.0%)
Imports (34.1%)	655		
RES (20.0%)	384	1,018	(53.0%)
Crete RES (0.0%)	0	0	(0.0%)
BESS (0.5%)	10	0	(0.0%)
HV Load (1.0%)	20	0	(0.0%)
MV Load (1.7%)	33	112	(5.8%)
LV Load (0.1%)	2	141	(7.3%)
Crete Load (0.0%)	0	0	(0.0%)
Pumping (0.0%)	0	0	(0.0%)
Exports		642	(33.4%)
Sys.Losses (0.0%)	0	0	(0.0%)
D/R Load (0.0%)	0	0	(0.0%)

