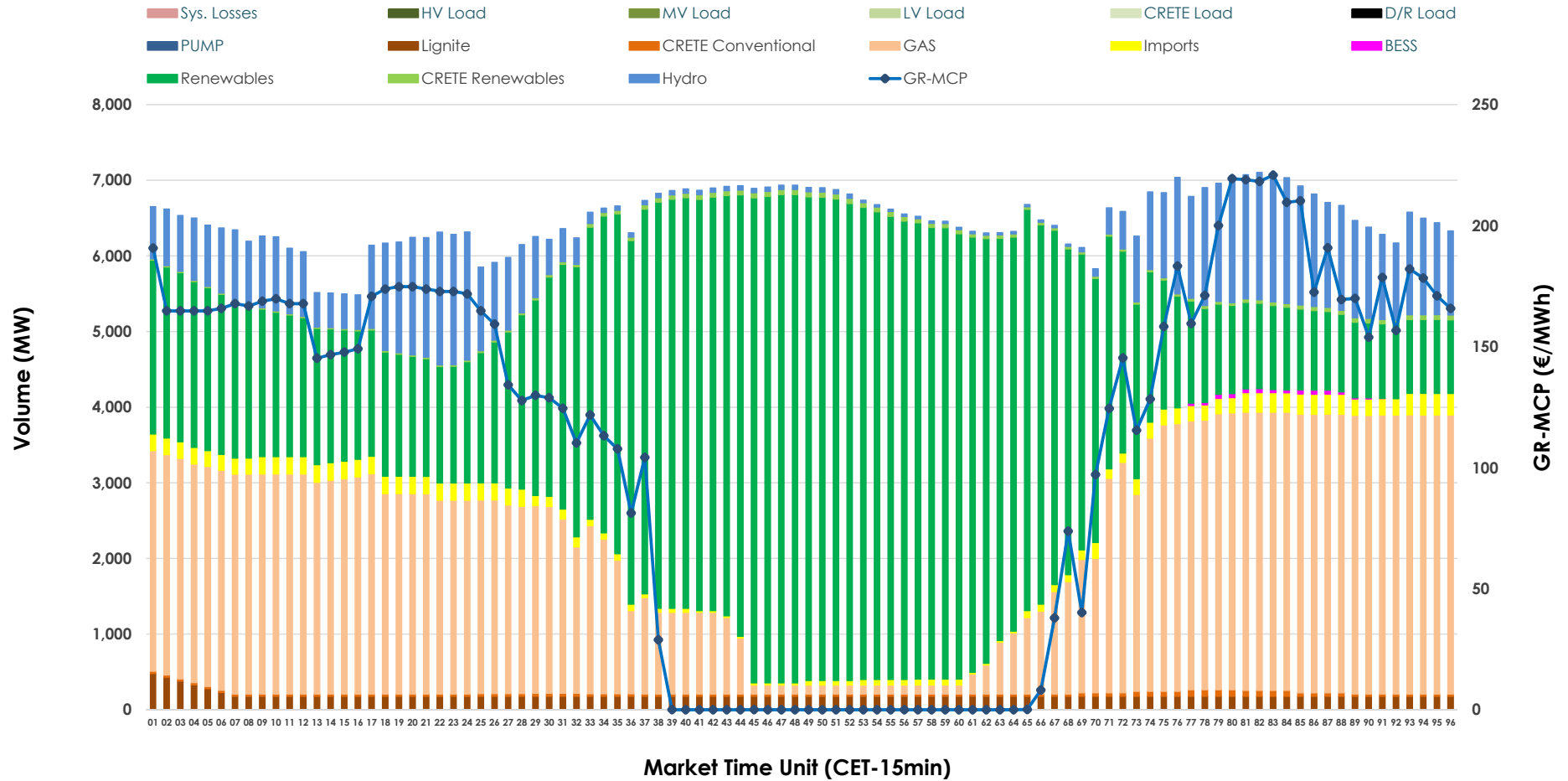


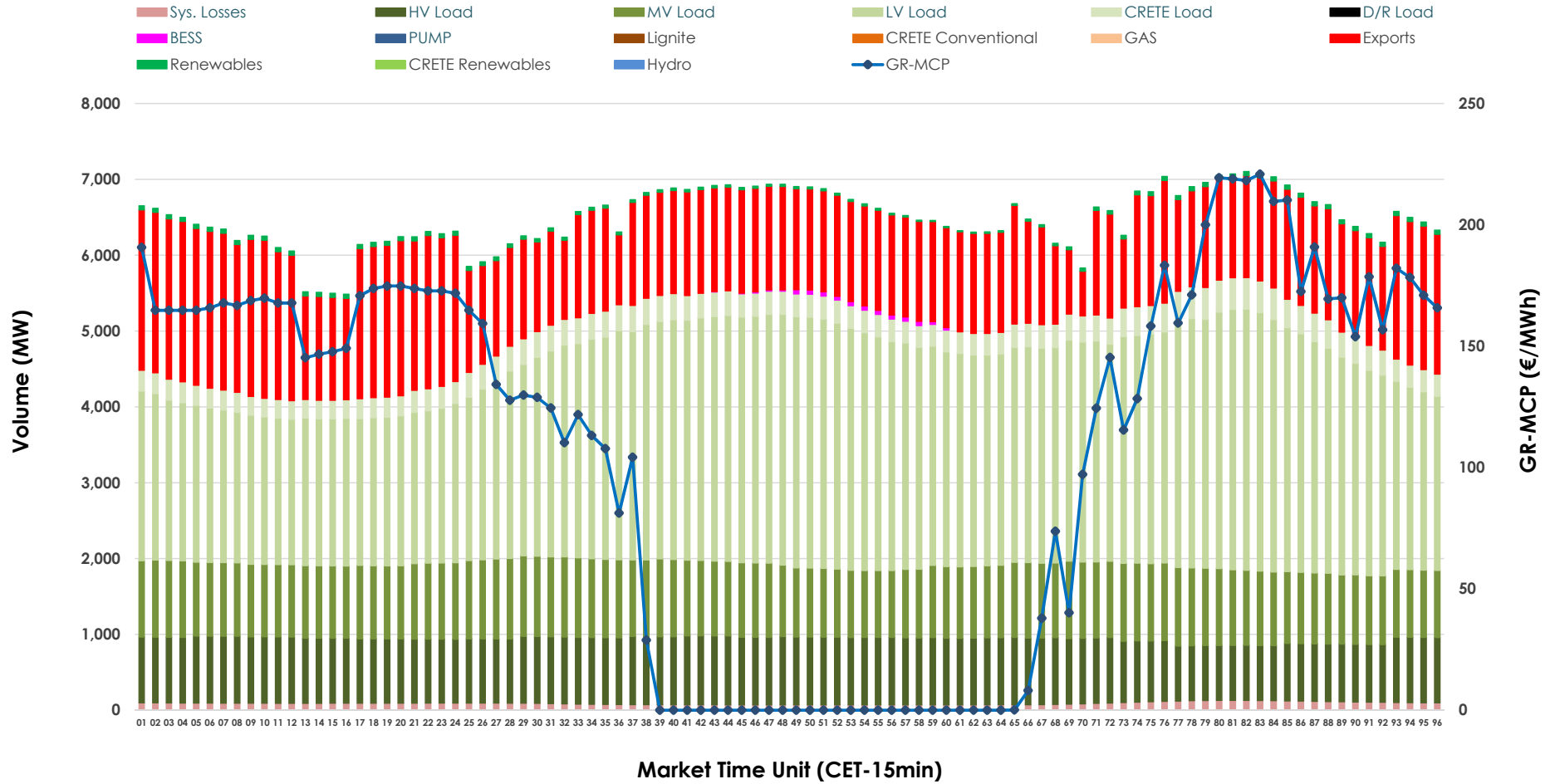


Day-Ahead Market Outlook

09.05.2026 Day-Ahead Market - Sell



09.05.2026 Day-Ahead Market - Buy



GR Bidding Zone Weekly Figures

Delivery Day	03.05	04.05	05.05	06.05	07.05	08.05	09.05
	↗ 11%	↕ 45%	→ 0%	↗ 4%	↗ 17%	↗ 1%	↘ -11%
Avg.MCP (€/MWh)	68.20	98.94	98.73	103.01	120.39	122.10	109.01
Max.MCP (€/MWh)	172.97	263.41	257.05	205.60	176.89	180.08	220.88
Min.MCP (€/MWh)	-10.25	-0.10	-0.01	0.00	11.00	54.19	0.00
	↘ -2%	↗ 4%	↘ -1%	↘ -3%	→ 1%	↗ 3%	↗ 1%
Tot.Vol(GWh)	299.12	311.19	307.32	296.65	298.95	307.30	311.59

Trades by Order Type

Delivery Day		03.05	04.05	05.05	06.05	07.05	08.05	09.05	
Ord Price Type		Sell & Buy Trades in (GWh) per Price Type							(%)
PPT	(S)	71.520	59.921	56.144	52.370	54.293	56.340	59.265	38.04%
HBD	(S)	64.433	73.103	67.017	69.505	60.788	61.406	71.643	45.98%
BLK	(S)	13.409	21.897	29.691	25.317	34.136	30.821	24.868	15.96%
CPL	(S)	0.197	0.675	0.807	1.136	0.258	5.083	0.022	0.01%
PPT	(B)	13.234	15.057	14.815	15.325	15.121	15.159	15.045	9.66%
HBD	(B)	117.163	128.647	126.916	124.454	122.238	124.069	119.139	76.47%
BLK	(B)	0.000	0.000	0.000	0.000	0.000	0.000	0.000	0.00%
CPL	(B)	19.161	11.892	11.928	8.547	12.116	14.422	21.613	13.87%
		Sell & Buy Orders Traded per Price Type							(%)
PPT	(S)	1518	1552	1728	1667	1689	1702	1708	32.74%
HBD	(S)	2646	3146	3211	3430	3600	3461	3499	67.07%
BLK	(S)	9	13	10	9	13	10	10	0.19%
PPT	(B)	2266	2308	2296	2317	2324	2316	2392	37.06%
HBD	(B)	3942	4037	4157	3947	4001	4025	4063	62.94%
BLK	(B)	0	0	0	0	0	0	0	0.00%

- MCP** Market Clearing Price (€/MWh)
- PPT** Priority Price-Taking
- HBD** Hybrid
- BLK** Block
- CPL** Market Coupling Flow

Trade's Volume Mix

	Sell - MWh	Buy - MWh	
Lignite (2.9%)	4,512	0	(0.0%)
Crete Conv. (0.6%)	914	0	(0.0%)
Gas (33.2%)	51,795	0	(0.0%)
Hydro (10.6%)	16,442	0	(0.0%)
Imports (2.4%)	3,806		
RES (49.5%)	77,185	1,020	(0.7%)
Crete RES (0.6%)	998	0	(0.0%)
BESS (0.1%)	146	171	(0.1%)
HV Load (0.0%)	0	20,416	(13.1%)
MV Load (0.0%)	0	23,423	(15.0%)
LV Load (0.0%)	0	65,272	(41.9%)
Crete Load (0.0%)	0	7,617	(4.9%)
Pumping (0.0%)	0	0	(0.0%)
Exports		35,716	(22.9%)
Sys.Losses (0.0%)	0	2,163	(1.4%)
D/R Load (0.0%)	0	0	(0.0%)

