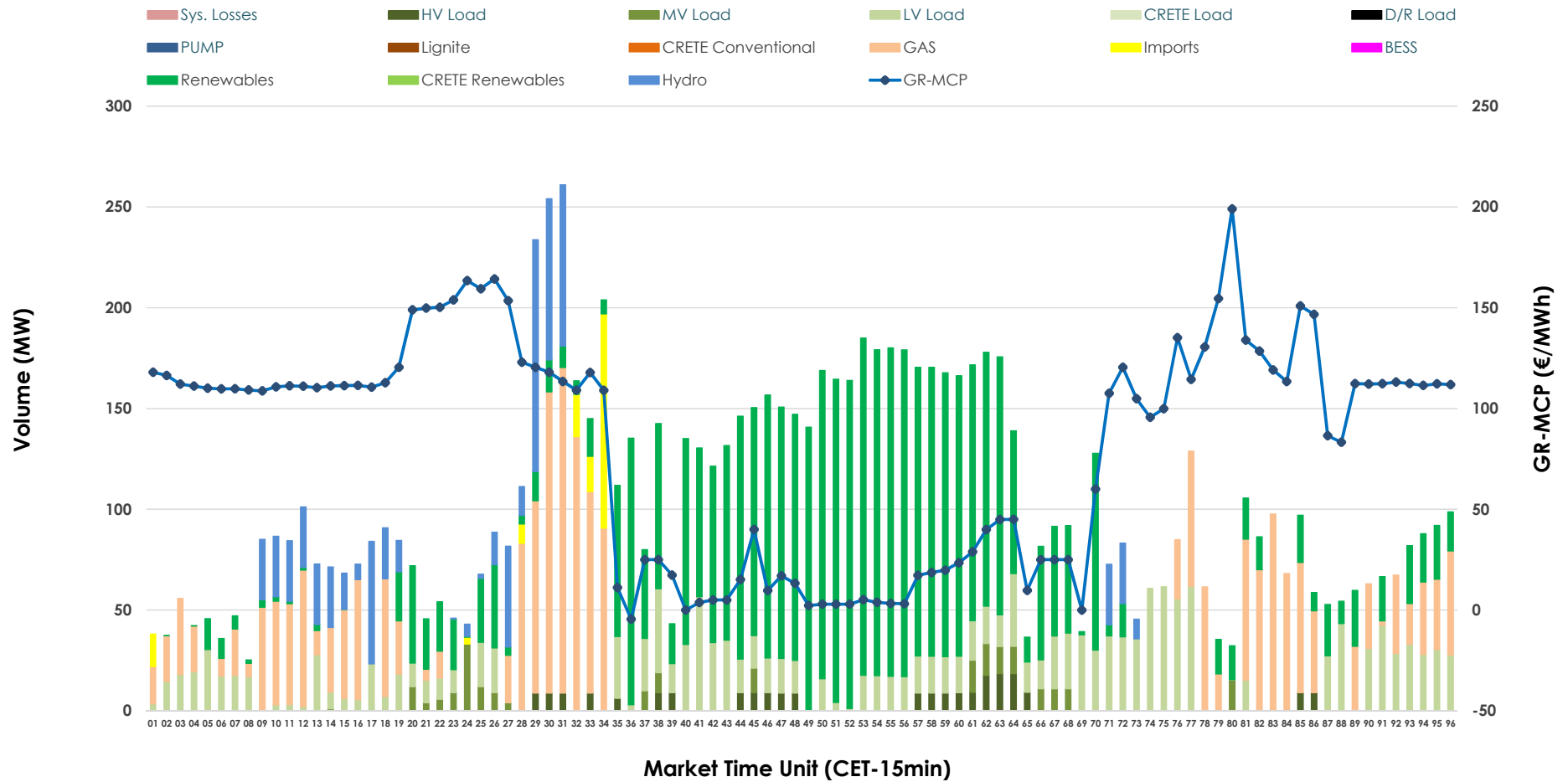


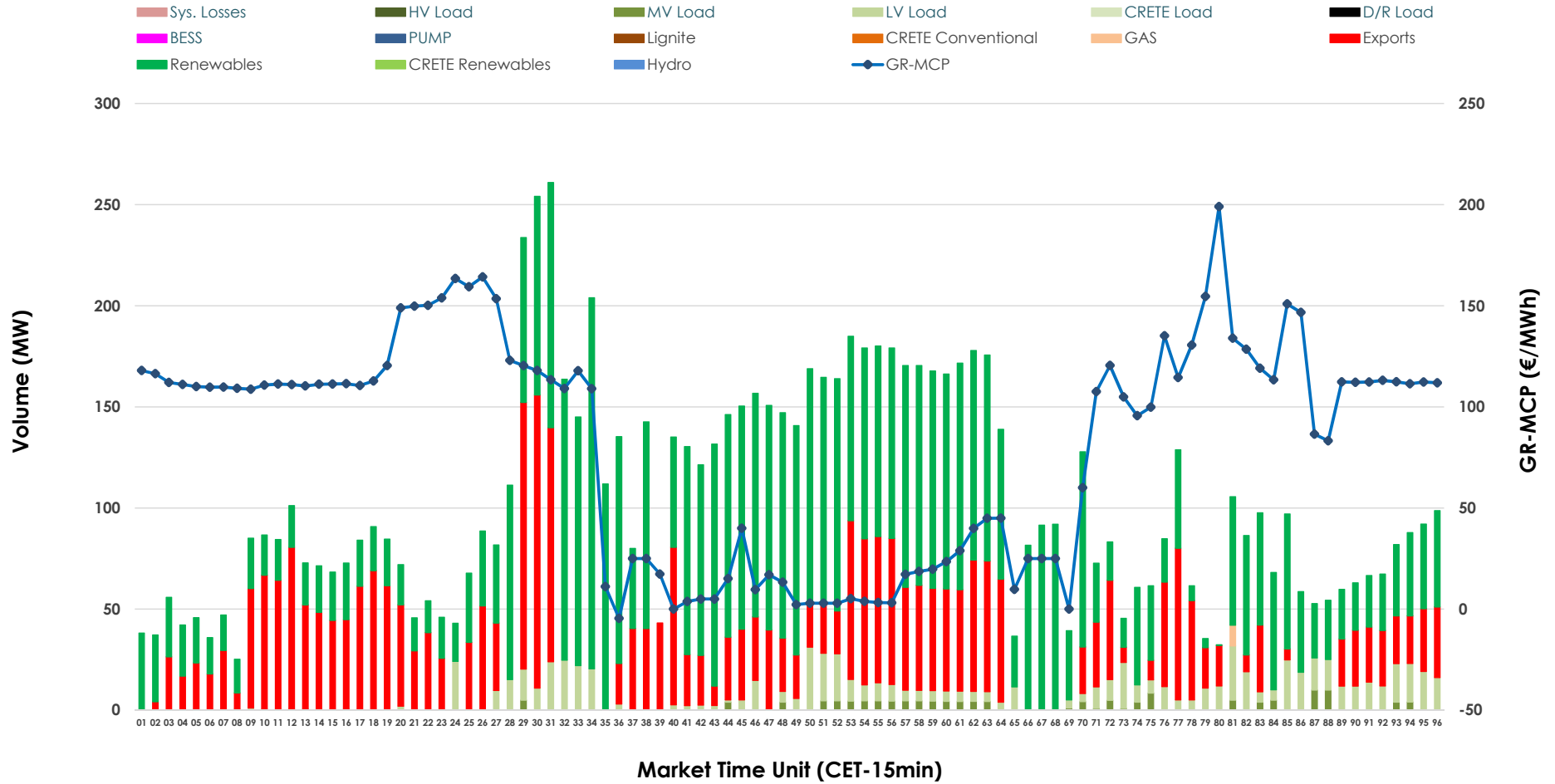


IDA '2' Market Outlook

12.05.2026 IDA '2' Market - Sell



12.05.2026 IDA '2' Market - Buy



GR Bidding Zone Weekly Figures

Delivery Day	06.05	07.05	08.05	09.05	10.05	11.05	12.05
	➔ 0%	➔ 24%	⬇️ -7%	⬇️ -20%	⬇️ -13%	➔ 21%	⬇️ -22%
Avg.MCP (€/MWh)	107.56	133.29	123.78	99.47	86.97	105.00	82.23
Max.MCP (€/MWh)	202.53	189.73	167.32	196.67	177.64	191.00	199.04
Min.MCP (€/MWh)	-8.32	100.24	66.00	-10.00	-0.02	-10.00	-4.56
	⬇️ -51%	⬆️ 63%	⬇️ -36%	⬇️ -5%	⬇️ -30%	⬇️ -11%	⬆️ 103%
Tot.Vol(GWh)	4.00	6.53	4.16	3.95	2.77	2.46	4.98

Trades by Order Type

Delivery Day		06.05	07.05	08.05	09.05	10.05	11.05	12.05	
Ord Price Type		Sell & Buy Trades in (GWh) per Price Type							(%)
PPT	(S)	0.000	0.000	0.000	0.000	0.000	0.000	0.000	0.00%
HBD	(S)	1.897	2.001	1.774	1.276	0.755	0.988	2.445	98.25%
BLK	(S)	0.000	0.000	0.000	0.000	0.000	0.000	0.000	0.00%
CPL	(S)	0.102	1.266	0.303	0.700	0.629	0.241	0.044	1.75%
PPT	(B)	0.000	0.000	0.000	0.000	0.000	0.000	0.000	0.00%
HBD	(B)	1.120	1.968	1.038	1.407	1.055	1.094	1.663	66.82%
BLK	(B)	0.000	0.000	0.000	0.000	0.000	0.000	0.000	0.00%
CPL	(B)	0.878	1.300	1.039	0.570	0.329	0.135	0.826	33.18%
		Sell & Buy Orders Traded per Price Type							(%)
PPT	(S)	0	0	0	0	0	0	0	0.00%
HBD	(S)	223	283	320	162	232	380	343	100.00%
BLK	(S)	0	0	0	0	0	0	0	0.00%
PPT	(B)	0	0	0	0	0	0	0	0.00%
HBD	(B)	345	454	354	486	434	529	453	100.00%
BLK	(B)	0	0	0	0	0	0	0	0.00%

- MCP** Market Clearing Price (€/MWh)
- PPT** Priority Price-Taking
- HBD** Hybrid
- BLK** Block
- CPL** Market Coupling Flow

Trade's Volume Mix

	Sell - MWh	Buy - MWh	
Lignite (0.0%)	0	0	(0.0%)
Crete Conv. (0.0%)	0	0	(0.0%)
Gas (23.0%)	572	3	(0.1%)
Hydro (7.4%)	185	0	(0.0%)
Imports (1.7%)	44		
RES (45.7%)	1,137	1,438	(57.8%)
Crete RES (0.0%)	0	0	(0.0%)
BESS (0.0%)	0	0	(0.0%)
HV Load (2.3%)	58	0	(0.0%)
MV Load (2.3%)	57	35	(1.4%)
LV Load (17.6%)	437	188	(7.5%)
Crete Load (0.0%)	0	0	(0.0%)
Pumping (0.0%)	0	0	(0.0%)
Exports		826	(33.2%)
Sys.Losses (0.0%)	0	0	(0.0%)
D/R Load (0.0%)	0	0	(0.0%)

