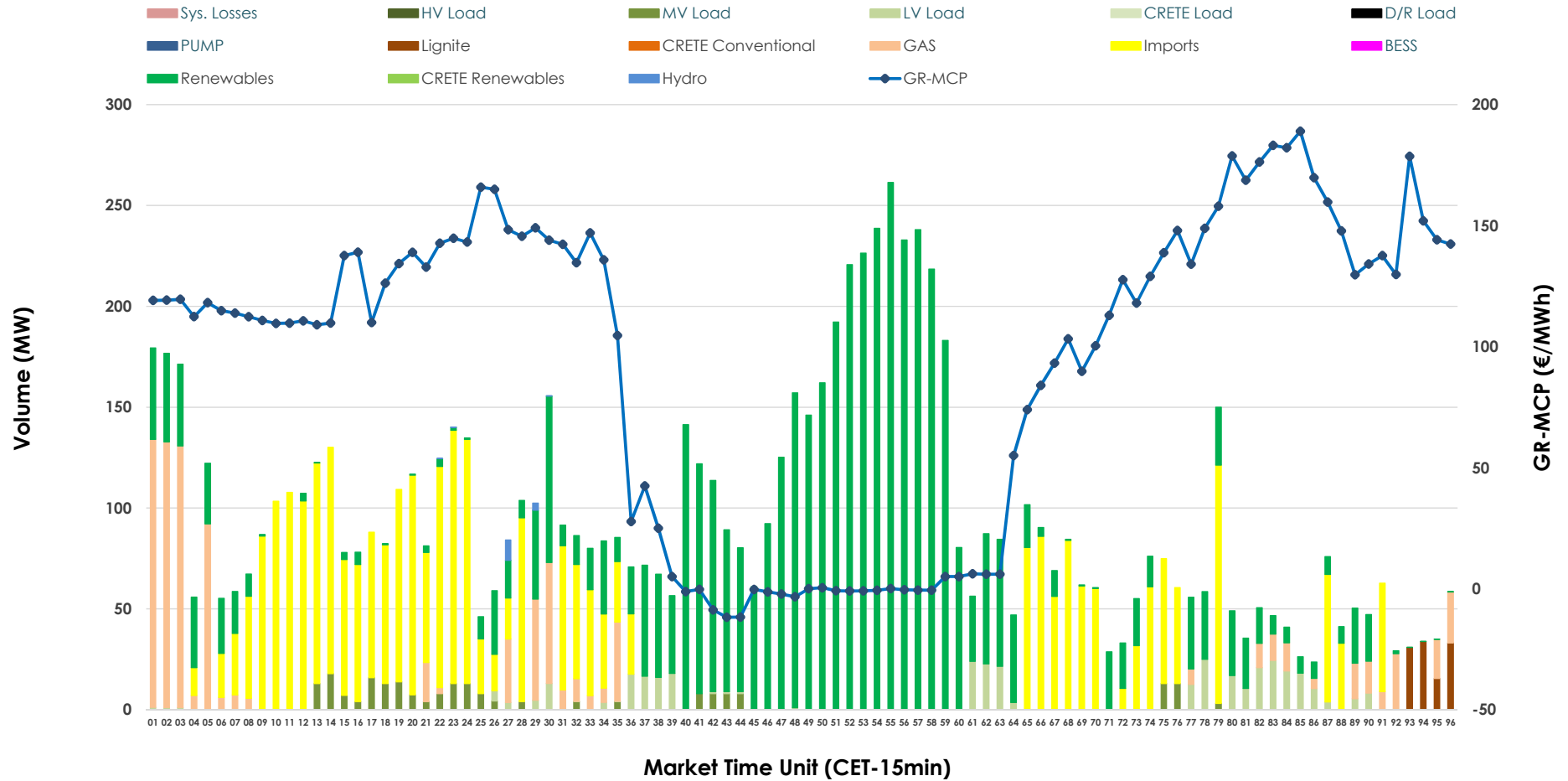


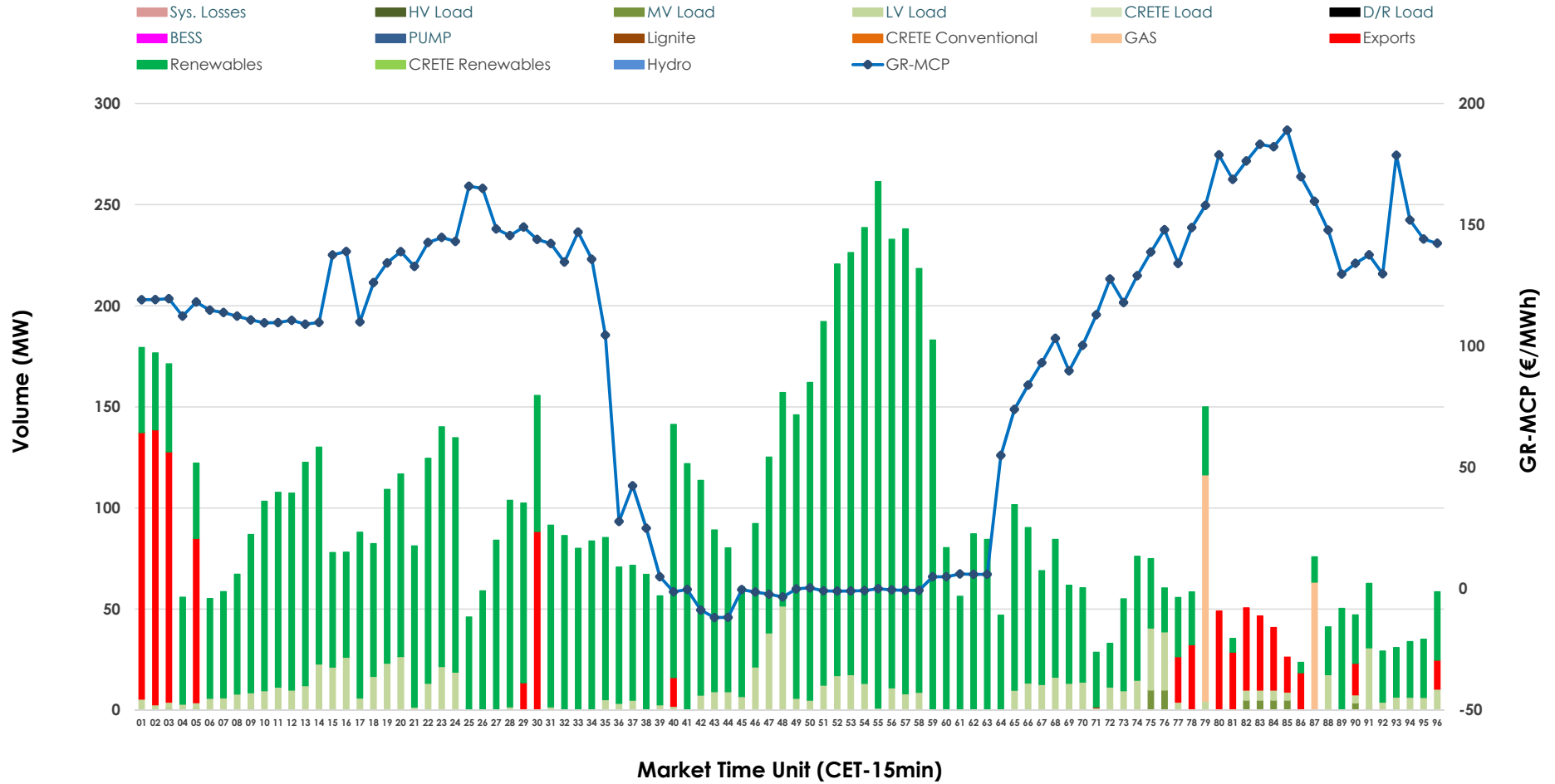


# IDA '2' Market Outlook

13.05.2026 IDA '2' Market - Sell



### 13.05.2026 IDA '2' Market - Buy



### GR Bidding Zone Weekly Figures

Delivery Day	07.05	08.05	09.05	10.05	11.05	12.05	13.05
	↗ 24%	↘ -7%	↘ -20%	↘ -13%	↗ 21%	↘ -22%	↗ 16%
<b>Avg.MCP (€/MWh)</b>	133.29	123.78	99.47	86.97	105.00	82.23	95.03
<b>Max.MCP (€/MWh)</b>	189.73	167.32	196.67	177.64	191.00	199.04	189.00
<b>Min.MCP (€/MWh)</b>	100.24	66.00	-10.00	-0.02	-10.00	-4.56	-11.80
	↗ 63%	↘ -36%	↘ -5%	↘ -30%	↘ -11%	↗ 103%	↘ -7%
<b>Tot.Vol(GWh)</b>	6.53	4.16	3.95	2.77	2.46	4.98	4.64

### Trades by Order Type

Delivery Day		07.05	08.05	09.05	10.05	11.05	12.05	13.05	
<b>Ord Price Type</b>		<b>Sell &amp; Buy Trades in (GWh) per Price Type</b>							<b>(%)</b>
<b>PPT</b>	(S)	0.000	0.000	0.000	0.000	0.000	0.000	0.000	0.00%
<b>HBD</b>	(S)	2.001	1.774	1.276	0.755	0.988	2.445	1.576	67.94%
<b>BLK</b>	(S)	0.000	0.000	0.000	0.000	0.000	0.000	0.000	0.00%
<b>CPL</b>	(S)	1.266	0.303	0.700	0.629	0.241	0.044	0.743	32.06%
<b>PPT</b>	(B)	0.000	0.000	0.000	0.000	0.000	0.000	0.000	0.00%
<b>HBD</b>	(B)	1.968	1.038	1.407	1.055	1.094	1.663	2.095	90.36%
<b>BLK</b>	(B)	0.000	0.000	0.000	0.000	0.000	0.000	0.000	0.00%
<b>CPL</b>	(B)	1.300	1.039	0.570	0.329	0.135	0.826	0.224	9.64%
		<b>Sell &amp; Buy Orders Traded per Price Type</b>							<b>(%)</b>
<b>PPT</b>	(S)	0	0	0	0	0	0	0	0.00%
<b>HBD</b>	(S)	283	320	162	232	380	343	270	100.00%
<b>BLK</b>	(S)	0	0	0	0	0	0	0	0.00%
<b>PPT</b>	(B)	0	0	0	0	0	0	0	0.00%
<b>HBD</b>	(B)	454	354	486	434	529	453	469	100.00%
<b>BLK</b>	(B)	0	0	0	0	0	0	0	0.00%

- MCP** Market Clearing Price (€/MWh)
- PPT** Priority Price-Taking
- HBD** Hybrid
- BLK** Block
- CPL** Market Coupling Flow

### Trade's Volume Mix

	Sell - MWh	Buy - MWh	
<b>Lignite</b> (1.2%)	28	0	(0.0%)
<b>Crete Conv.</b> (0.0%)	0	0	(0.0%)
<b>Gas</b> (9.9%)	229	44	(1.9%)
<b>Hydro</b> (0.1%)	3	0	(0.0%)
<b>Imports</b> (32.1%)	743		
<b>RES</b> (50.5%)	1,172	1,829	(78.9%)
<b>Crete RES</b> (0.0%)	0	0	(0.0%)
<b>BESS</b> (0.0%)	0	0	(0.0%)
<b>HV Load</b> (0.0%)	0	0	(0.0%)
<b>MV Load</b> (2.3%)	54	12	(0.5%)
<b>LV Load</b> (3.8%)	89	211	(9.1%)
<b>Crete Load</b> (0.0%)	0	0	(0.0%)
<b>Pumping</b> (0.0%)	0	0	(0.0%)
<b>Exports</b>		224	(9.6%)
<b>Sys.Losses</b> (0.0%)	0	0	(0.0%)
<b>D/R Load</b> (0.0%)	0	0	(0.0%)

