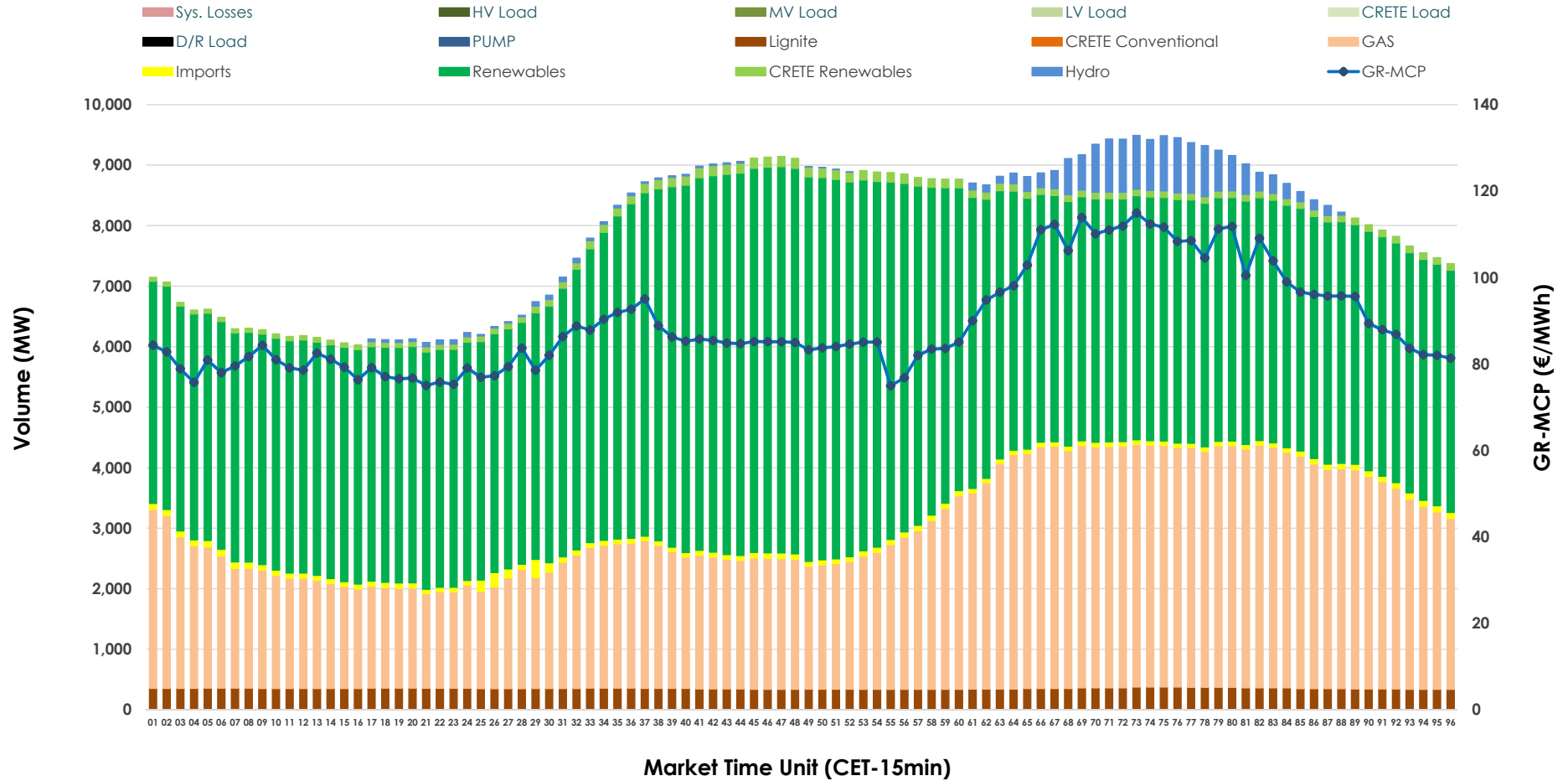


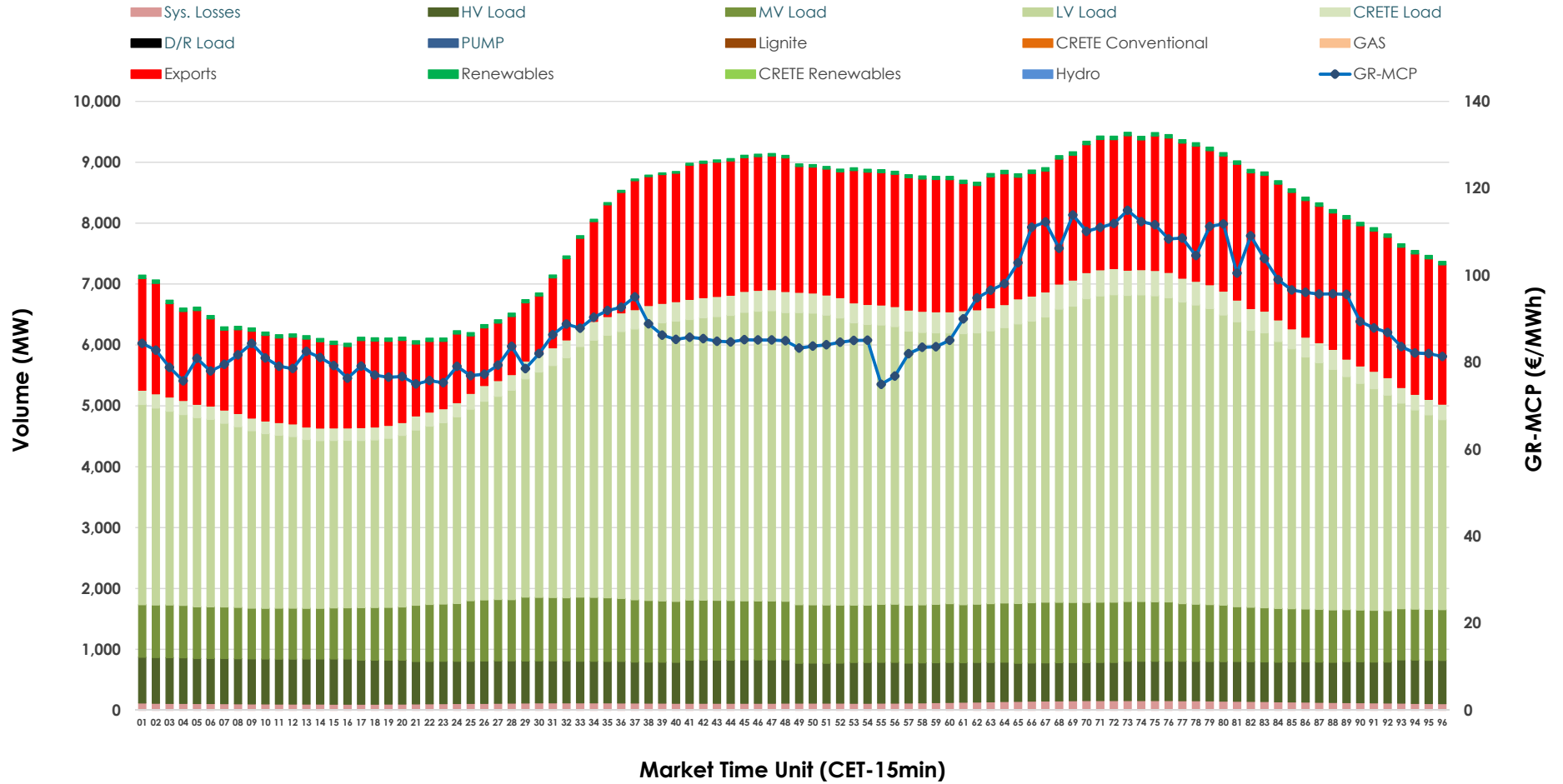


# Day-Ahead Market Outlook

03.01.2026 Day-Ahead Market - Sell



### 03.01.2026 Day-Ahead Market - Buy



### GR Bidding Zone Weekly Figures

Delivery Day	28.12	29.12	30.12	31.12	01.01	02.01	03.01
	👇 -13%	👆 22%	👇 -7%	👆 5%	👇 -21%	👆 19%	👇 -6%
<b>Avg.MCP (€/MWh)</b>	84.46	102.75	95.23	100.45	79.44	94.59	89.27
<b>Max.MCP (€/MWh)</b>	122.61	160.91	147.44	182.30	140.47	125.85	114.95
<b>Min.MCP (€/MWh)</b>	0.20	58.40	0.20	74.41	10.23	26.67	74.94
	👆 2%	👉 0%	👉 1%	👆 2%	👇 -3%	👆 4%	👆 6%
<b>Tot.Vol(GWh)</b>	349.06	349.51	352.11	359.47	348.40	362.87	383.02

### Trades by Order Type

Delivery Day		28.12	29.12	30.12	31.12	01.01	02.01	03.01	
<b>Ord Price Type</b>		<b>Sell &amp; Buy Trades in (GWh) per Price Type</b>							<b>(%)</b>
<b>PPT</b>	(S)	53.357	47.322	54.153	53.153	50.133	53.556	67.086	35.03%
<b>HBD</b>	(S)	72.782	66.797	69.659	74.228	66.925	69.516	77.856	40.65%
<b>BLK</b>	(S)	42.639	53.786	47.936	44.790	39.393	44.873	46.419	24.24%
<b>CPL</b>	(S)	5.751	6.850	4.309	7.563	17.750	13.493	0.150	0.08%
<b>PPT</b>	(B)	14.794	15.215	15.576	15.549	15.514	15.498	16.042	8.38%
<b>HBD</b>	(B)	138.534	143.751	147.958	150.532	146.526	152.286	143.346	74.85%
<b>BLK</b>	(B)	0.000	0.000	0.000	0.000	0.000	0.000	0.000	0.00%
<b>CPL</b>	(B)	21.201	15.790	12.522	13.654	12.161	13.653	32.122	16.77%
		<b>Sell &amp; Buy Orders Traded per Price Type</b>							<b>(%)</b>
<b>PPT</b>	(S)	1471	1447	1477	1426	1345	1382	1356	32.93%
<b>HBD</b>	(S)	2807	2909	2857	2813	2590	2834	2742	66.59%
<b>BLK</b>	(S)	19	22	16	17	13	18	20	0.49%
<b>PPT</b>	(B)	2386	2354	2347	2361	2457	2370	2344	36.07%
<b>HBD</b>	(B)	4184	4138	4186	4103	4489	4132	4155	63.93%
<b>BLK</b>	(B)	0	0	0	0	0	0	0	0.00%

**MCP** Market Clearing Price (€/MWh)  
**PPT** Priority Price-Taking  
**HBD** Hybrid  
**BLK** Block  
**CPL** Market Coupling Flow

### Trade's Volume Mix

		Sell - MWh	Buy - MWh	
<b>Lignite</b>	(4.4%)	8,415	0	(0.0%)
<b>Crete Conv.</b>	(0.0%)	0	0	(0.0%)
<b>Gas</b>	(34.1%)	65,317	0	(0.0%)
<b>Hydro</b>	(1.9%)	3,671	0	(0.0%)
<b>Imports</b>	(1.1%)	2,180		
<b>RES</b>	(57.0%)	109,193	1,202	(0.6%)
<b>Crete RES</b>	(1.4%)	2,735	0	(0.0%)
<b>HV Load</b>	(0.0%)	0	16,421	(8.6%)
<b>MV Load</b>	(0.0%)	0	22,403	(11.7%)
<b>LV Load</b>	(0.0%)	0	96,287	(50.3%)
<b>Crete Load</b>	(0.0%)	0	7,419	(3.9%)
<b>Pumping</b>	(0.0%)	0	0	(0.0%)
<b>Exports</b>			44,807	(23.4%)
<b>Sys.Losses</b>	(0.0%)	0	2,972	(1.6%)
<b>D/R Load</b>	(0.0%)	0	0	(0.0%)

