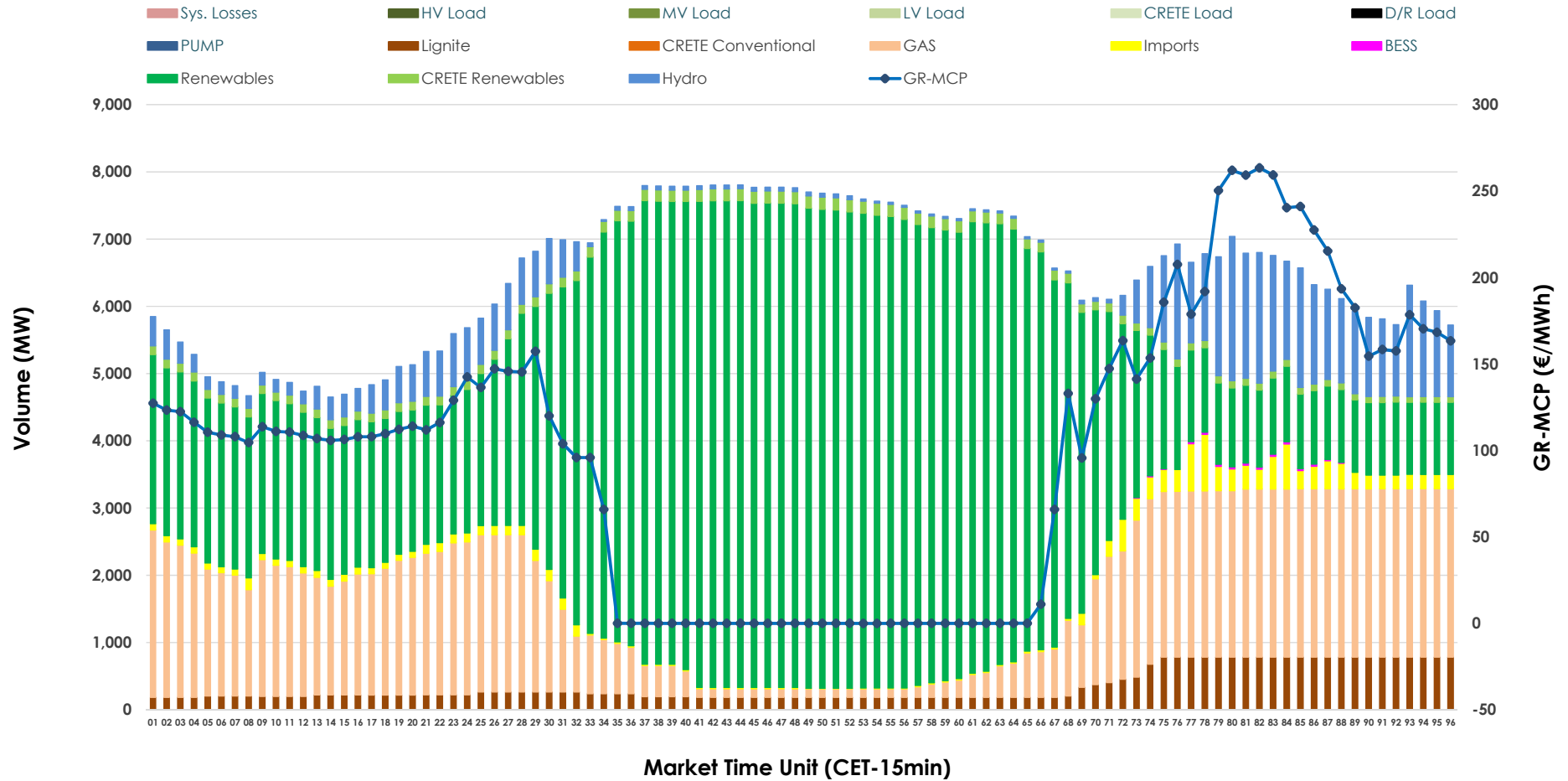


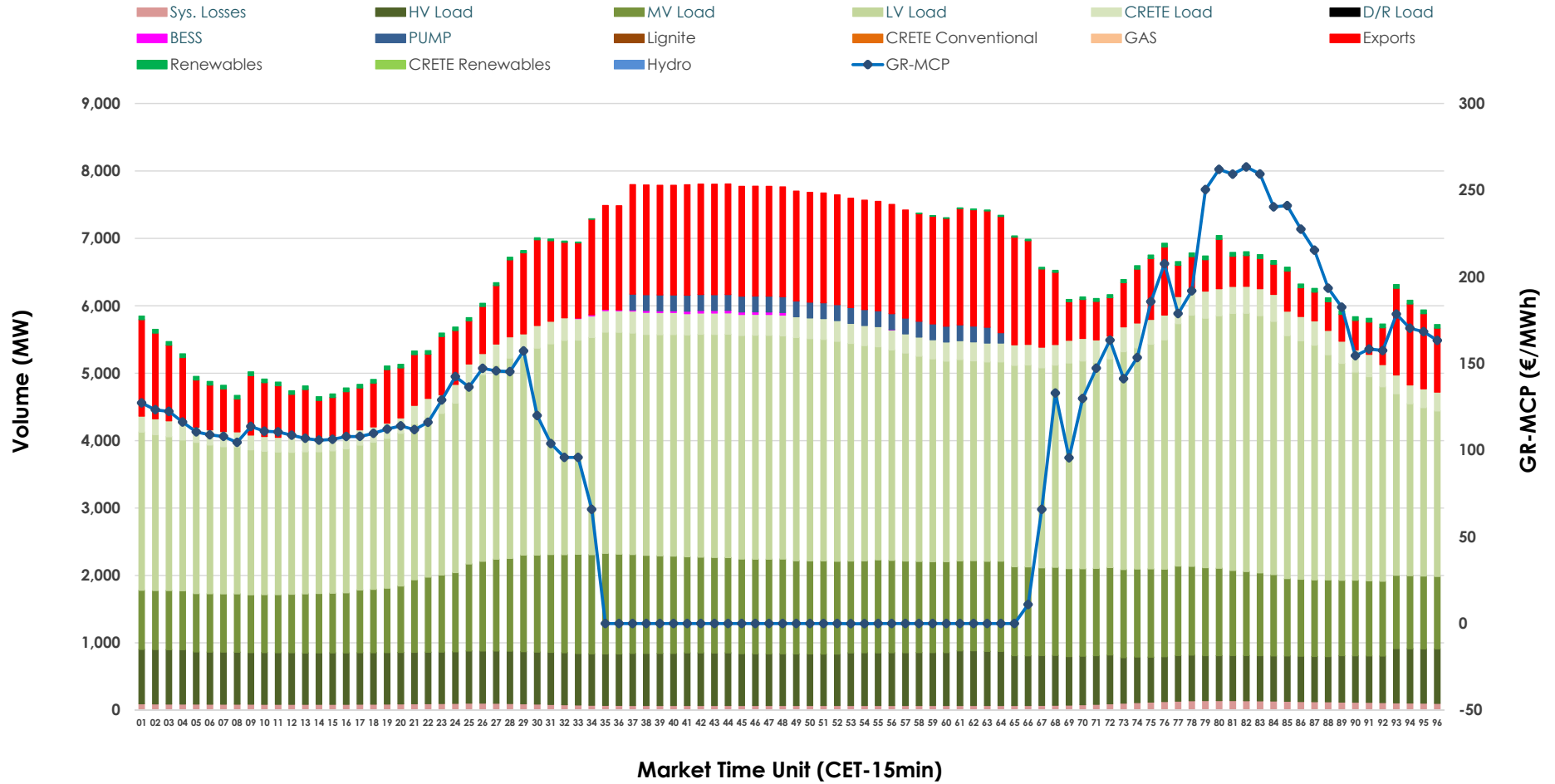


# Day-Ahead Market Outlook

04.05.2026 Day-Ahead Market - Sell



### 04.05.2026 Day-Ahead Market - Buy



### GR Bidding Zone Weekly Figures

Delivery Day	28.04	29.04	30.04	01.05	02.05	03.05	04.05
	👇 -5%	👈 28%	👇 -11%	👇 -37%	👈 13%	👈 11%	👈 45%
<b>Avg.MCP (€/MWh)</b>	75.66	97.01	86.43	54.50	61.40	68.20	98.94
<b>Max.MCP (€/MWh)</b>	195.51	223.89	213.40	120.80	182.68	172.97	263.41
<b>Min.MCP (€/MWh)</b>	-2.50	-0.01	0.01	0.00	-5.00	-10.25	-0.10
	👈 2%	👈 0%	👇 -2%	👈 5%	👈 4%	👇 -2%	👈 4%
<b>Tot.Vol(GWh)</b>	285.73	285.20	280.87	294.18	304.64	299.12	311.19

### Trades by Order Type

Delivery Day		28.04	29.04	30.04	01.05	02.05	03.05	04.05	
<b>Ord Price Type</b>		<b>Sell &amp; Buy Trades in (GWh) per Price Type</b>							<b>(%)</b>
<b>PPT</b>	(S)	56.503	50.135	49.397	70.948	77.082	71.520	59.921	38.51%
<b>HBD</b>	(S)	56.663	60.517	60.205	66.512	65.566	64.433	73.103	46.98%
<b>BLK</b>	(S)	29.032	31.075	23.319	9.630	9.306	13.409	21.897	14.07%
<b>CPL</b>	(S)	0.665	0.873	7.514	0.000	0.367	0.197	0.675	0.43%
<b>PPT</b>	(B)	12.556	12.132	12.191	13.282	14.496	13.234	15.057	9.68%
<b>HBD</b>	(B)	118.971	121.569	121.751	114.864	118.407	117.163	128.647	82.68%
<b>BLK</b>	(B)	0.000	0.000	0.000	0.000	0.000	0.000	0.000	0.00%
<b>CPL</b>	(B)	11.337	8.899	6.492	18.943	19.418	19.161	11.892	7.64%
		<b>Sell &amp; Buy Orders Traded per Price Type</b>							<b>(%)</b>
<b>PPT</b>	(S)	1657	1691	1674	1559	1484	1518	1552	32.94%
<b>HBD</b>	(S)	2787	3191	3352	2875	2577	2646	3146	66.78%
<b>BLK</b>	(S)	13	15	9	9	8	9	13	0.28%
<b>PPT</b>	(B)	2293	2311	2265	2294	2263	2266	2308	36.38%
<b>HBD</b>	(B)	4129	4038	4187	4191	3891	3942	4037	63.62%
<b>BLK</b>	(B)	0	0	0	0	0	0	0	0.00%

- MCP** Market Clearing Price (€/MWh)
- PPT** Priority Price-Taking
- HBD** Hybrid
- BLK** Block
- CPL** Market Coupling Flow

### Trade's Volume Mix

	Sell - MWh	Buy - MWh	
<b>Lignite</b> (5.4%)	8,473	0	(0.0%)
<b>Crete Conv.</b> (0.0%)	0	0	(0.0%)
<b>Gas</b> (22.7%)	35,278	0	(0.0%)
<b>Hydro</b> (8.1%)	12,532	0	(0.0%)
<b>Imports</b> (2.2%)	3,448		
<b>RES</b> (59.4%)	92,479	786	(0.5%)
<b>Crete RES</b> (2.1%)	3,289	0	(0.0%)
<b>BESS</b> (0.1%)	97	115	(0.1%)
<b>HV Load</b> (0.0%)	0	18,045	(11.6%)
<b>MV Load</b> (0.0%)	0	29,358	(18.9%)
<b>LV Load</b> (0.0%)	0	70,787	(45.5%)
<b>Crete Load</b> (0.0%)	0	7,283	(4.7%)
<b>Pumping</b> (0.0%)	0	1,624	(1.0%)
<b>Exports</b>		25,376	(16.3%)
<b>Sys.Losses</b> (0.0%)	0	2,222	(1.4%)
<b>D/R Load</b> (0.0%)	0	0	(0.0%)

