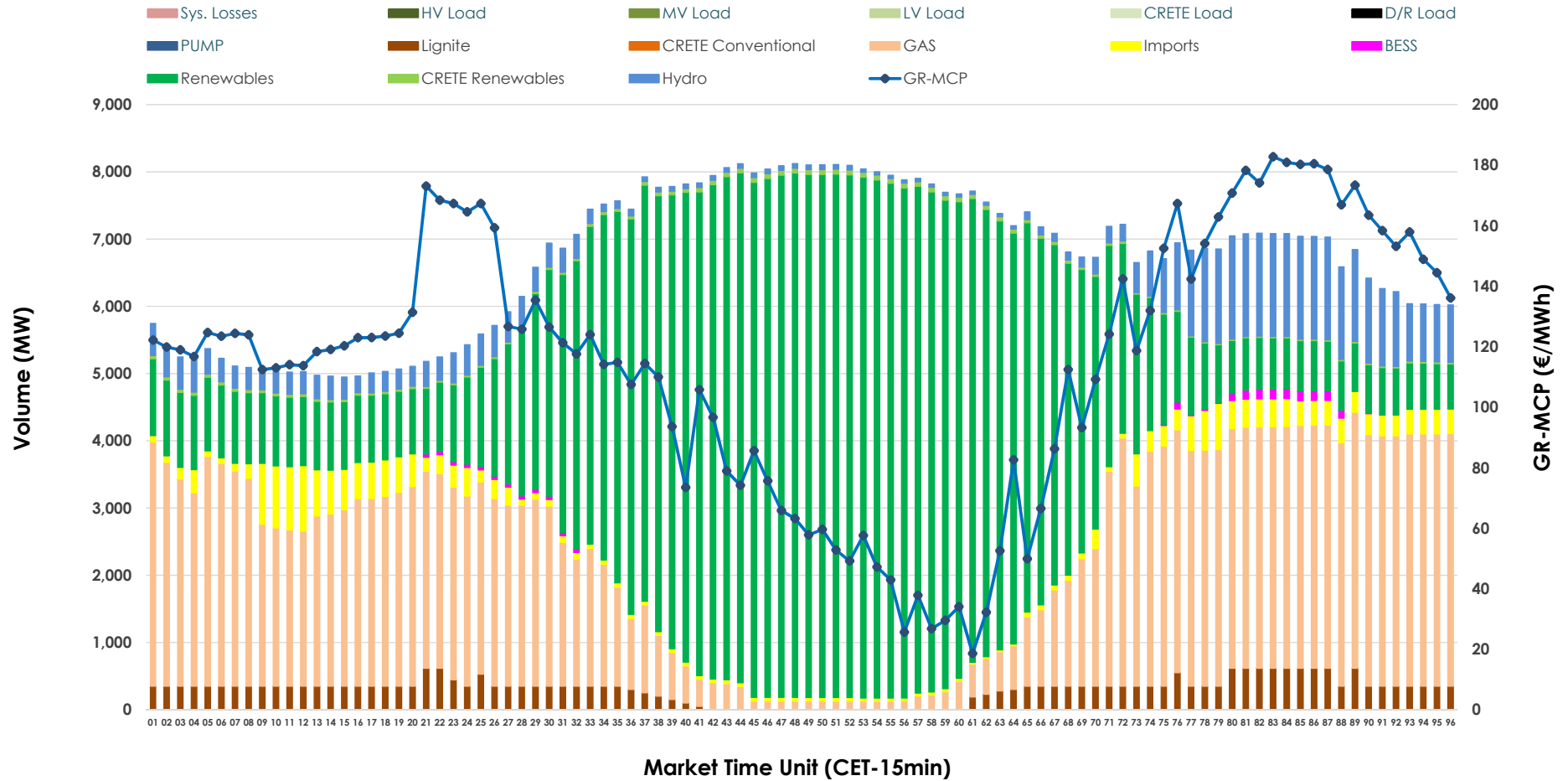


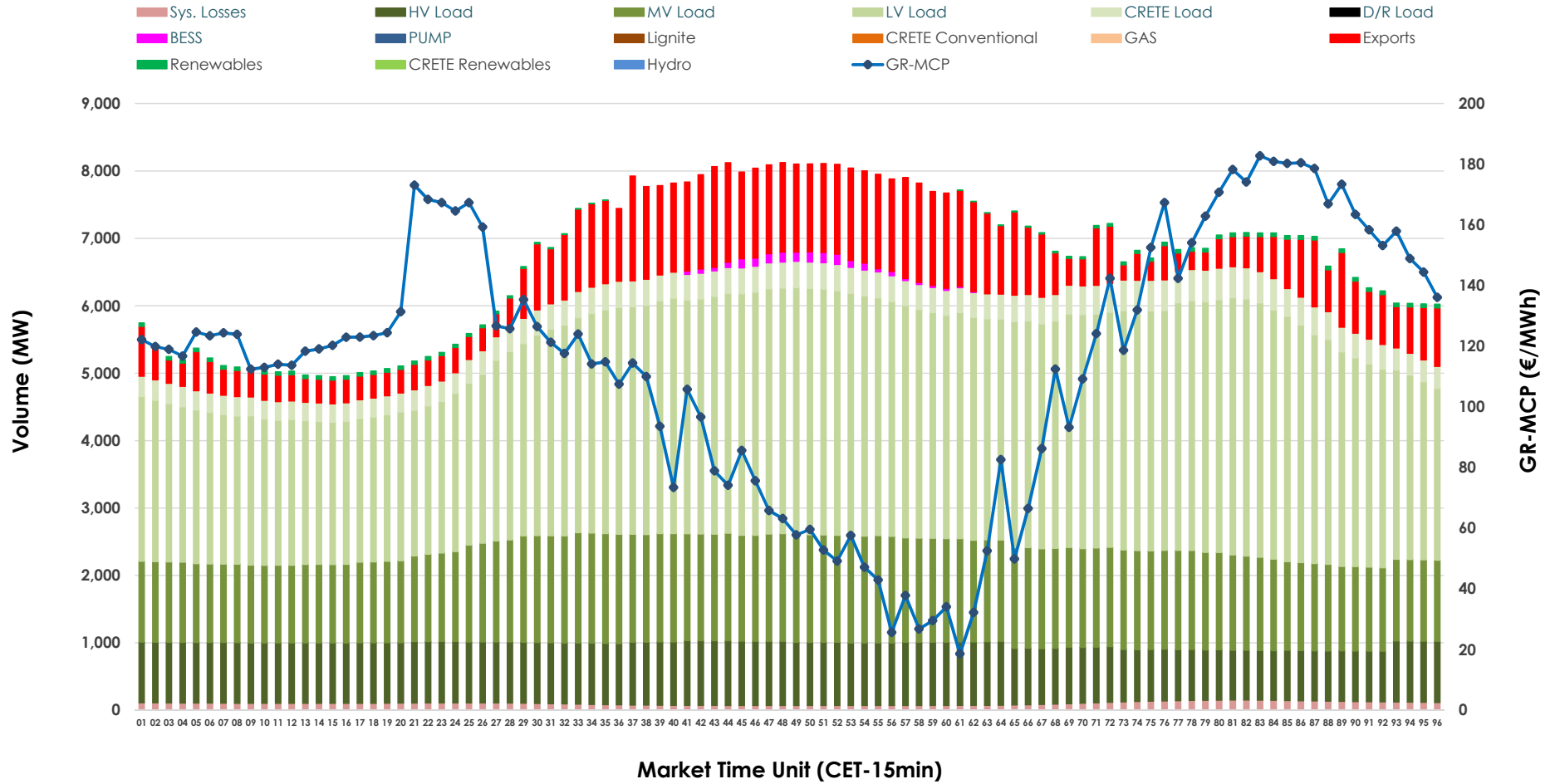


# Day-Ahead Market Outlook

05.06.2026 Day-Ahead Market - Sell



### 05.06.2026 Day-Ahead Market - Buy



### GR Bidding Zone Weekly Figures

Delivery Day	30.05	31.05	01.06	02.06	03.06	04.06	05.06
	↗ 11%	↘ -6%	↗ 11%	↗ -1%	↘ -11%	↗ 6%	↗ 26%
<b>Avg.MCP (€/MWh)</b>	92.62	87.36	97.12	96.31	85.72	91.05	114.69
<b>Max.MCP (€/MWh)</b>	216.79	166.99	185.00	171.60	150.00	210.77	182.76
<b>Min.MCP (€/MWh)</b>	-1.64	-0.01	0.00	0.00	0.00	5.44	18.59
	↘ -13%	↘ -3%	↗ 11%	↗ 5%	↗ 3%	↘ -11%	↘ -2%
<b>Tot.Vol(GWh)</b>	316.75	306.63	339.56	357.43	367.73	327.39	321.16

### Trades by Order Type

Delivery Day		30.05	31.05	01.06	02.06	03.06	04.06	05.06	
<b>Ord Price Type</b>		<b>Sell &amp; Buy Trades in (GWh) per Price Type</b>							<b>(%)</b>
<b>PPT</b>	(S)	67.224	63.025	62.576	64.590	68.089	64.441	58.338	36.33%
<b>HBD</b>	(S)	65.767	62.234	76.261	80.307	78.424	66.852	70.853	44.12%
<b>BLK</b>	(S)	25.384	28.056	30.945	33.821	37.350	29.365	28.875	17.98%
<b>CPL</b>	(S)	0.000	0.000	0.000	0.000	0.000	3.038	2.516	1.57%
<b>PPT</b>	(B)	15.170	13.900	15.188	15.274	15.118	16.151	15.503	9.65%
<b>HBD</b>	(B)	122.362	115.985	128.365	135.591	142.718	141.396	136.467	84.98%
<b>BLK</b>	(B)	0.000	0.000	0.000	0.000	0.000	0.000	0.000	0.00%
<b>CPL</b>	(B)	20.843	23.430	26.229	27.852	26.028	6.148	8.612	5.36%
		<b>Sell &amp; Buy Orders Traded per Price Type</b>							<b>(%)</b>
<b>PPT</b>	(S)	1835	1814	1750	1754	1740	1703	1718	32.40%
<b>HBD</b>	(S)	3258	3170	3394	3467	3314	3595	3574	67.40%
<b>BLK</b>	(S)	17	15	15	15	17	13	11	0.21%
<b>PPT</b>	(B)	2346	2301	2384	2392	2388	2413	2359	37.70%
<b>HBD</b>	(B)	3982	3669	3831	3932	3986	4066	3898	62.30%
<b>BLK</b>	(B)	0	0	0	0	0	0	0	0.00%

- MCP** Market Clearing Price (€/MWh)
- PPT** Priority Price-Taking
- HBD** Hybrid
- BLK** Block
- CPL** Market Coupling Flow

### Trade's Volume Mix

	Sell - MWh	Buy - MWh	
<b>Lignite</b> (4.5%)	7,228	0	(0.0%)
<b>Crete Conv.</b> (0.0%)	0	0	(0.0%)
<b>Gas</b> (32.4%)	52,058	0	(0.0%)
<b>Hydro</b> (6.9%)	11,107	0	(0.0%)
<b>Imports</b> (3.7%)	5,975		
<b>RES</b> (51.5%)	82,680	758	(0.5%)
<b>Crete RES</b> (0.6%)	1,034	0	(0.0%)
<b>BESS</b> (0.3%)	500	460	(0.3%)
<b>HV Load</b> (0.0%)	0	21,047	(13.1%)
<b>MV Load</b> (0.0%)	0	33,923	(21.1%)
<b>LV Load</b> (0.0%)	0	73,670	(45.9%)
<b>Crete Load</b> (0.0%)	0	8,832	(5.5%)
<b>Pumping</b> (0.0%)	0	0	(0.0%)
<b>Exports</b>		19,468	(12.1%)
<b>Sys.Losses</b> (0.0%)	0	2,424	(1.5%)
<b>D/R Load</b> (0.0%)	0	0	(0.0%)

