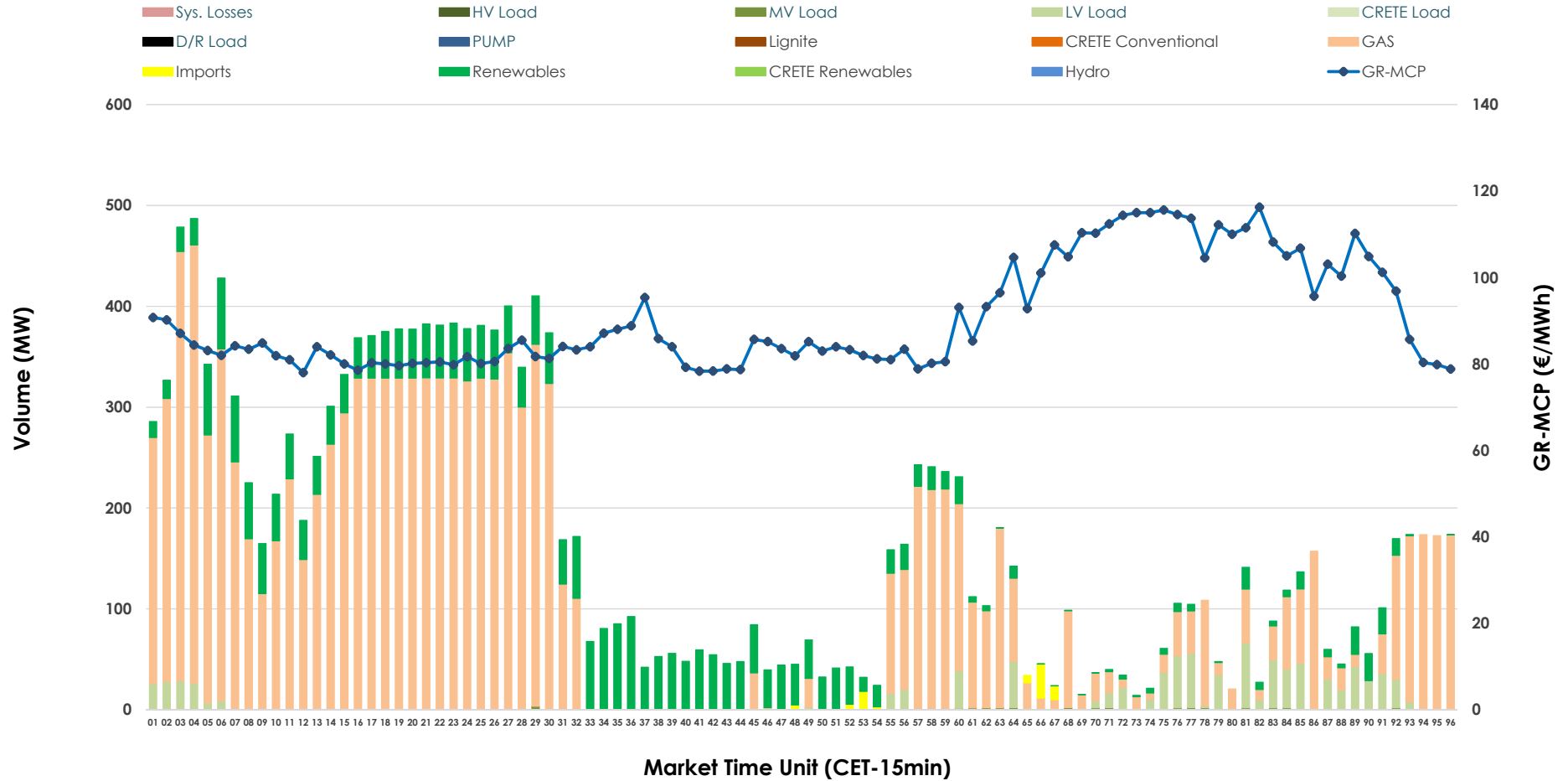


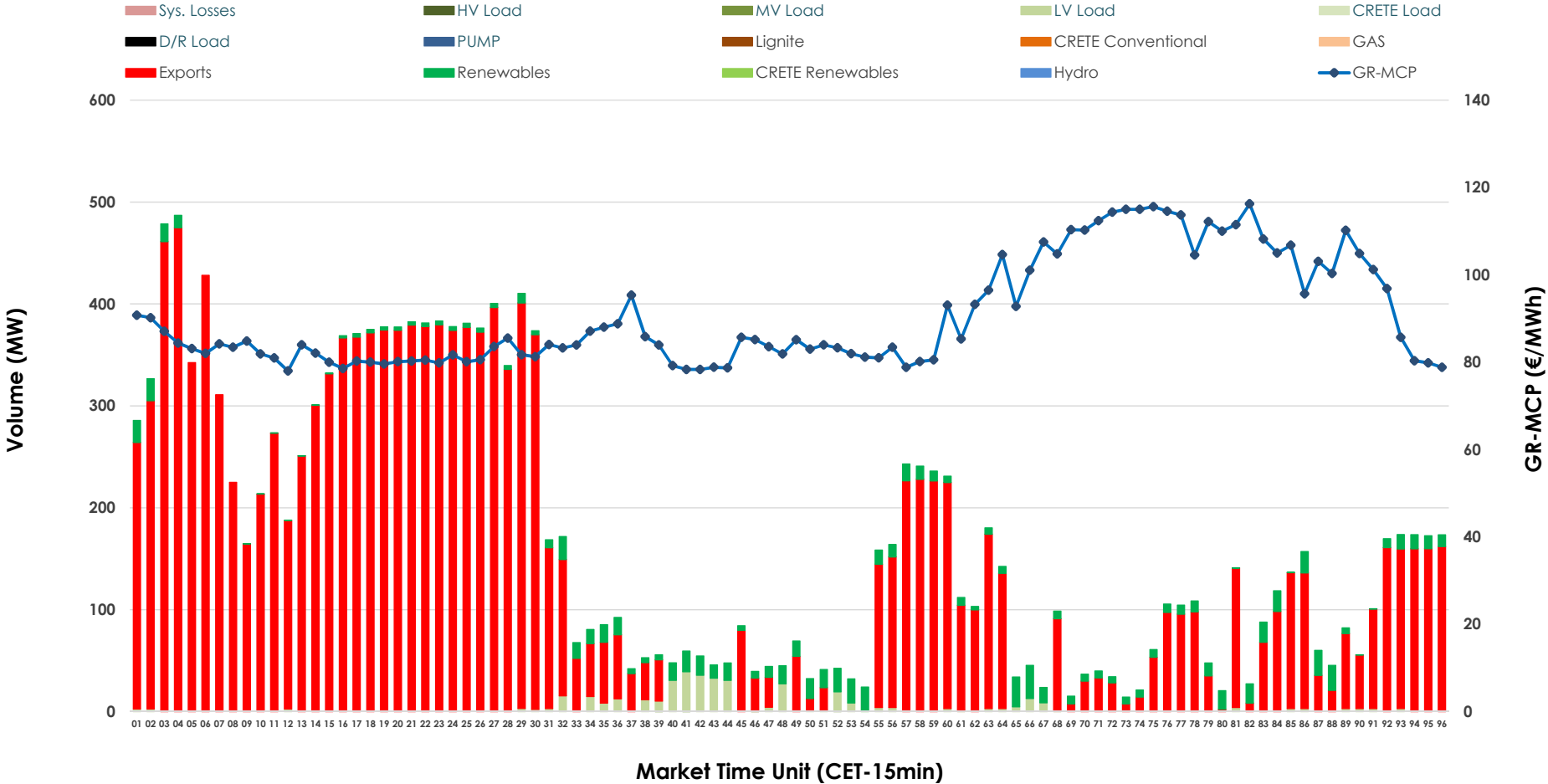


# IDA '2' Market Outlook

03.01.2026 IDA '2' Market - Sell



### 03.01.2026 IDA '2' Market - Buy



### GR Bidding Zone Weekly Figures

Delivery Day	28.12	29.12	30.12	31.12	01.01	02.01	03.01
	👇 -13%	👆 21%	👇 -5%	👆 3%	👇 -28%	👆 32%	👇 -3%
<b>Avg.MCP (€/MWh)</b>	82.93	100.09	95.27	98.28	70.62	92.94	90.57
<b>Max.MCP (€/MWh)</b>	118.00	158.62	144.17	181.76	119.63	138.91	116.27
<b>Min.MCP (€/MWh)</b>	-3.97	70.38	64.15	72.93	0.00	27.27	78.00
	👇 -19%	👆 46%	👆 13%	👇 -4%	👇 -62%	👆 99%	👆 108%
<b>Tot.Vol(GWh)</b>	3.33	4.85	5.49	5.25	1.97	3.93	8.15

### Trades by Order Type

Delivery Day		28.12	29.12	30.12	31.12	01.01	02.01	03.01	
<b>Ord Price Type</b>		<b>Sell &amp; Buy Trades in (GWh) per Price Type</b>							<b>(%)</b>
<b>PPT</b>	(S)	0.000	0.000	0.000	0.000	0.000	0.000	0.000	0.00%
<b>HBD</b>	(S)	1.080	0.715	2.379	1.868	0.755	1.628	4.056	99.47%
<b>BLK</b>	(S)	0.000	0.000	0.000	0.000	0.000	0.000	0.000	0.00%
<b>CPL</b>	(S)	0.585	1.712	0.368	0.757	0.231	0.337	0.021	0.53%
<b>PPT</b>	(B)	0.000	0.000	0.000	0.000	0.000	0.000	0.000	0.00%
<b>HBD</b>	(B)	0.907	2.199	0.490	1.509	0.469	0.529	0.340	8.34%
<b>BLK</b>	(B)	0.000	0.000	0.000	0.000	0.000	0.000	0.000	0.00%
<b>CPL</b>	(B)	0.758	0.228	2.257	1.117	0.517	1.436	3.738	91.66%
		<b>Sell &amp; Buy Orders Traded per Price Type</b>							<b>(%)</b>
<b>PPT</b>	(S)	0	0	0	0	0	0	0	0.00%
<b>HBD</b>	(S)	177	112	376	214	107	332	359	100.00%
<b>BLK</b>	(S)	0	0	0	0	0	0	0	0.00%
<b>PPT</b>	(B)	0	0	0	0	0	0	0	0.00%
<b>HBD</b>	(B)	285	549	189	853	255	368	245	100.00%
<b>BLK</b>	(B)	0	0	0	0	0	0	0	0.00%

- MCP** Market Clearing Price (€/MWh)
- PPT** Priority Price-Taking
- HBD** Hybrid
- BLK** Block
- CPL** Market Coupling Flow

### Trade's Volume Mix

		Sell - MWh	Buy - MWh	
<b>Lignite</b>	(0.0%)	0	0	(0.0%)
<b>Crete Conv.</b>	(0.0%)	0	0	(0.0%)
<b>Gas</b>	(76.0%)	3,100	0	(0.0%)
<b>Hydro</b>	(0.0%)	0	0	(0.0%)
<b>Imports</b>	(0.5%)	21		
<b>RES</b>	(17.8%)	726	243	(6.0%)
<b>Crete RES</b>	(0.0%)	0	0	(0.0%)
<b>HV Load</b>	(0.0%)	0	0	(0.0%)
<b>MV Load</b>	(0.2%)	9	0	(0.0%)
<b>LV Load</b>	(5.4%)	221	96	(2.4%)
<b>Crete Load</b>	(0.0%)	0	0	(0.0%)
<b>Pumping</b>	(0.0%)	0	0	(0.0%)
<b>Exports</b>			3,738	(91.7%)
<b>Sys.Losses</b>	(0.0%)	0	0	(0.0%)
<b>D/R Load</b>	(0.0%)	0	0	(0.0%)

