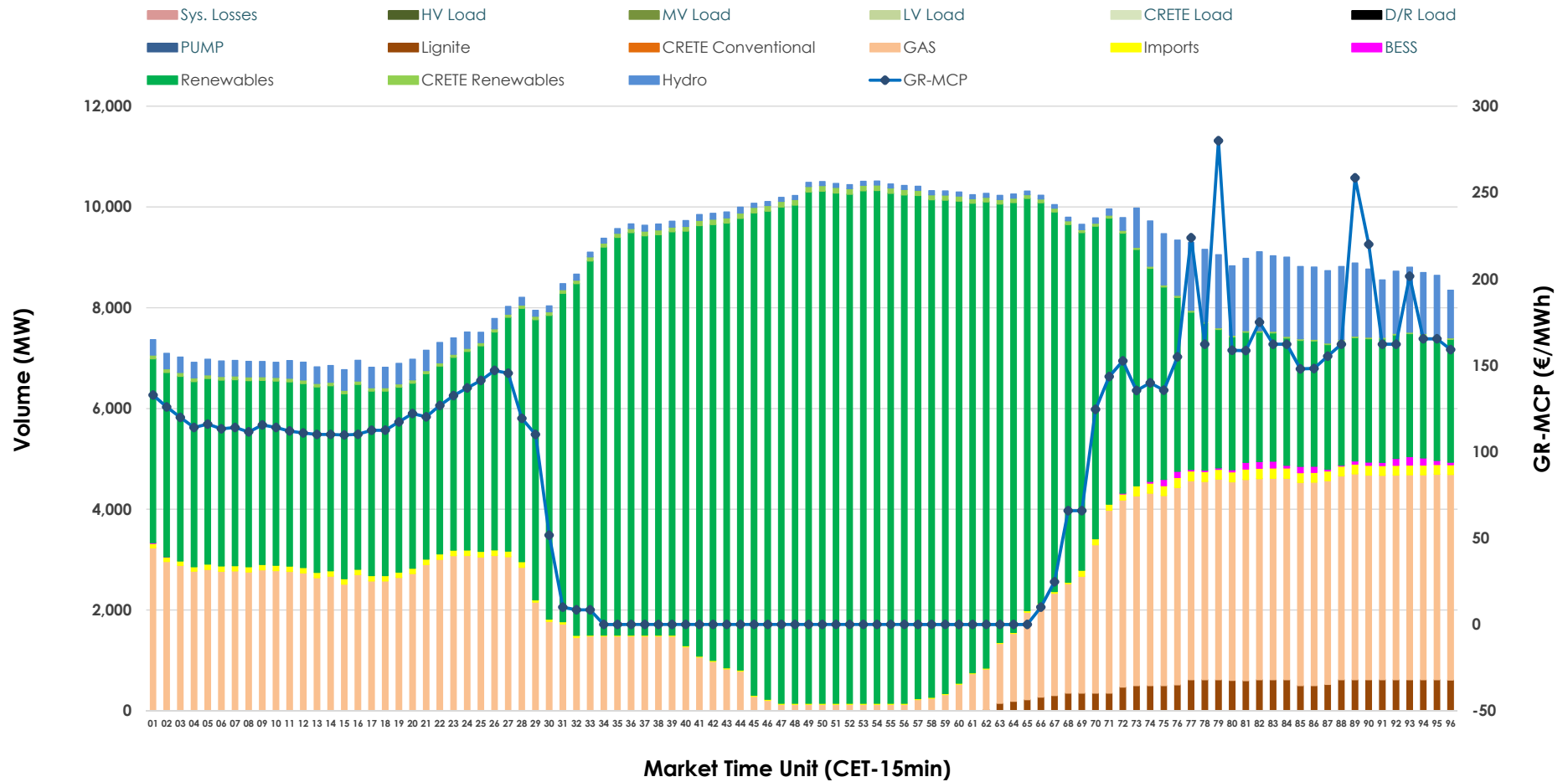


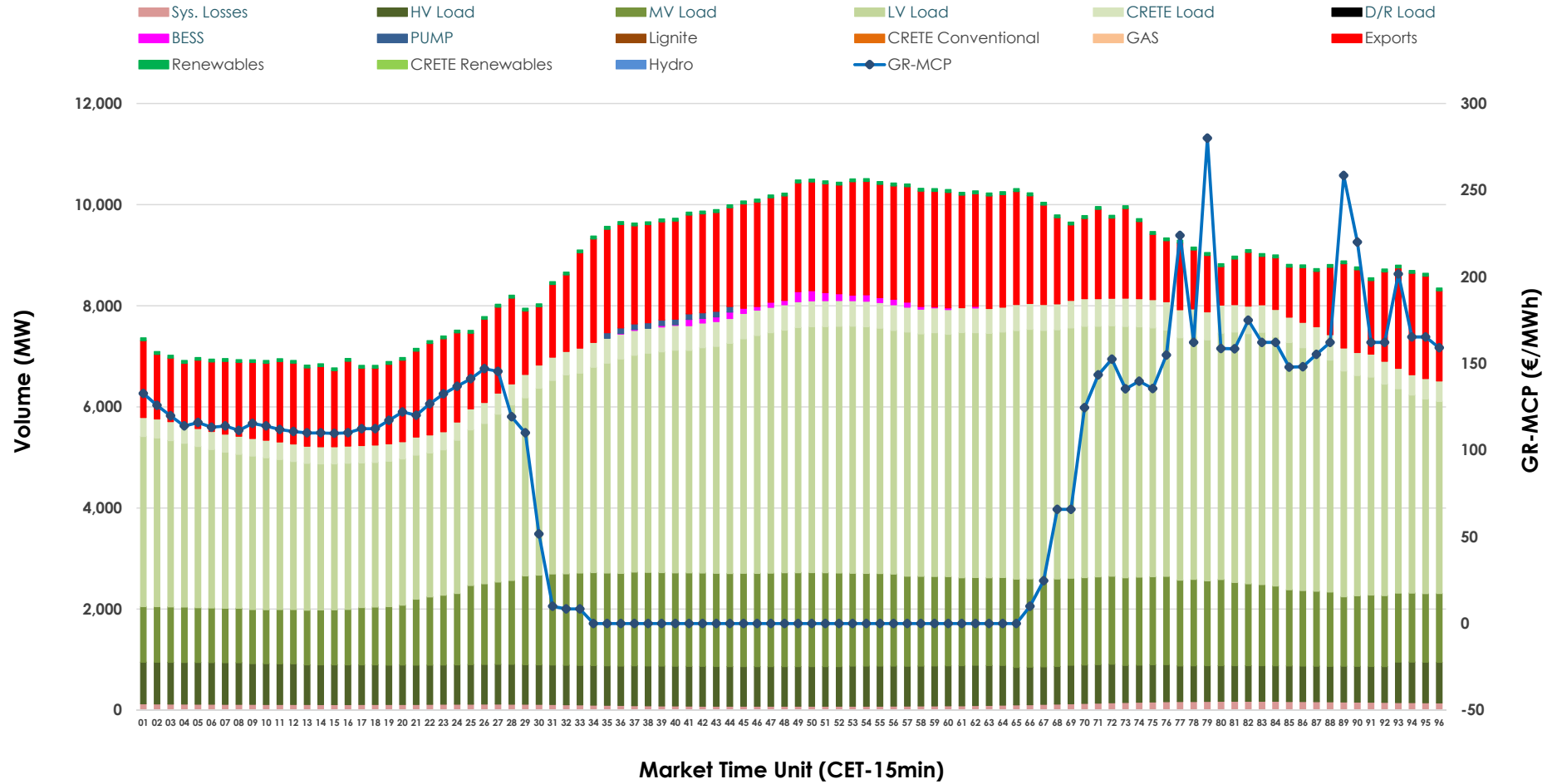


Day-Ahead Market Outlook

29.06.2026 Day-Ahead Market - Sell



29.06.2026 Day-Ahead Market - Buy



GR Bidding Zone Weekly Figures

Delivery Day	23.06	24.06	25.06	26.06	27.06	28.06	29.06
	↑ 49%	↔ 13%	↓ -13%	↓ -28%	↓ -15%	↓ -6%	↔ 24%
Avg.MCP (€/MWh)	123.69	139.85	121.33	87.69	74.45	69.97	86.50
Max.MCP (€/MWh)	298.03	300.00	262.00	186.07	160.00	152.40	280.03
Min.MCP (€/MWh)	0.00	40.00	11.09	-0.01	-0.01	-1.00	-0.01
	↔ 1%	→ -1%	↔ 1%	↔ 5%	↓ -3%	↓ -4%	↔ 7%
Tot.Vol(GWh)	403.96	401.62	406.63	425.18	414.09	395.81	425.41

Trades by Order Type

Delivery Day		23.06	24.06	25.06	26.06	27.06	28.06	29.06	
Ord Price Type		Sell & Buy Trades in (GWh) per Price Type							(%)
PPT	(S)	71.841	63.403	66.832	80.911	90.606	92.170	82.656	38.86%
HBD	(S)	90.967	82.325	86.427	93.814	90.634	79.054	96.232	45.24%
BLK	(S)	37.544	52.636	47.369	37.855	25.803	26.679	33.814	15.90%
CPL	(S)	1.628	2.445	2.690	0.011	0.000	0.000	0.000	0.00%
PPT	(B)	17.854	18.089	18.356	19.094	19.723	18.112	19.731	9.28%
HBD	(B)	162.194	160.856	164.810	166.579	159.315	146.652	167.883	78.93%
BLK	(B)	0.000	0.000	0.000	0.000	0.000	0.000	0.000	0.00%
CPL	(B)	21.932	21.864	20.151	26.918	28.005	33.138	25.089	11.80%
		Sell & Buy Orders Traded per Price Type							(%)
PPT	(S)	1668	1685	1752	1776	1784	1769	1664	34.57%
HBD	(S)	3750	3993	3869	3397	3281	2794	3135	65.14%
BLK	(S)	16	23	17	12	9	13	14	0.29%
PPT	(B)	2432	2392	2503	2523	2561	2556	2438	37.42%
HBD	(B)	3956	3854	4116	4186	4066	4057	4077	62.58%
BLK	(B)	0	0	0	0	0	0	0	0.00%

- MCP** Market Clearing Price (€/MWh)
- PPT** Priority Price-Taking
- HBD** Hybrid
- BLK** Block
- CPL** Market Coupling Flow

Trade's Volume Mix

	Sell - MWh	Buy - MWh	
Lignite (2.0%)	4,250	0	(0.0%)
Crete Conv. (0.0%)	0	0	(0.0%)
Gas (26.4%)	56,256	0	(0.0%)
Hydro (5.2%)	11,044	0	(0.0%)
Imports (1.1%)	2,275		
RES (64.3%)	136,691	1,296	(0.6%)
Crete RES (0.8%)	1,691	0	(0.0%)
BESS (0.2%)	496	561	(0.3%)
HV Load (0.0%)	0	18,525	(8.7%)
MV Load (0.0%)	0	37,590	(17.7%)
LV Load (0.0%)	0	99,649	(46.8%)
Crete Load (0.0%)	0	11,051	(5.2%)
Pumping (0.0%)	0	275	(0.1%)
Exports		40,868	(19.2%)
Sys.Losses (0.0%)	0	2,888	(1.4%)
D/R Load (0.0%)	0	0	(0.0%)

