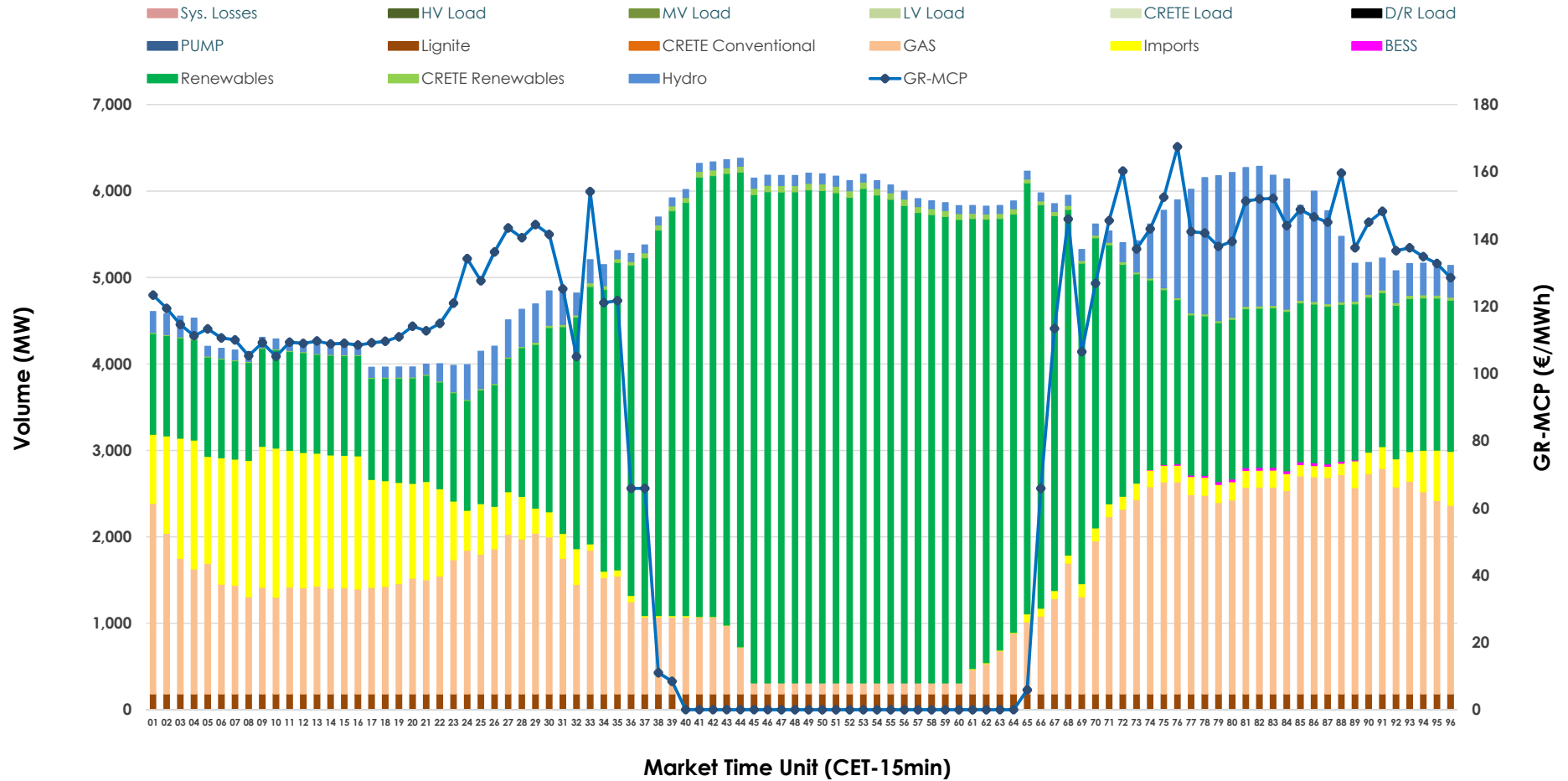


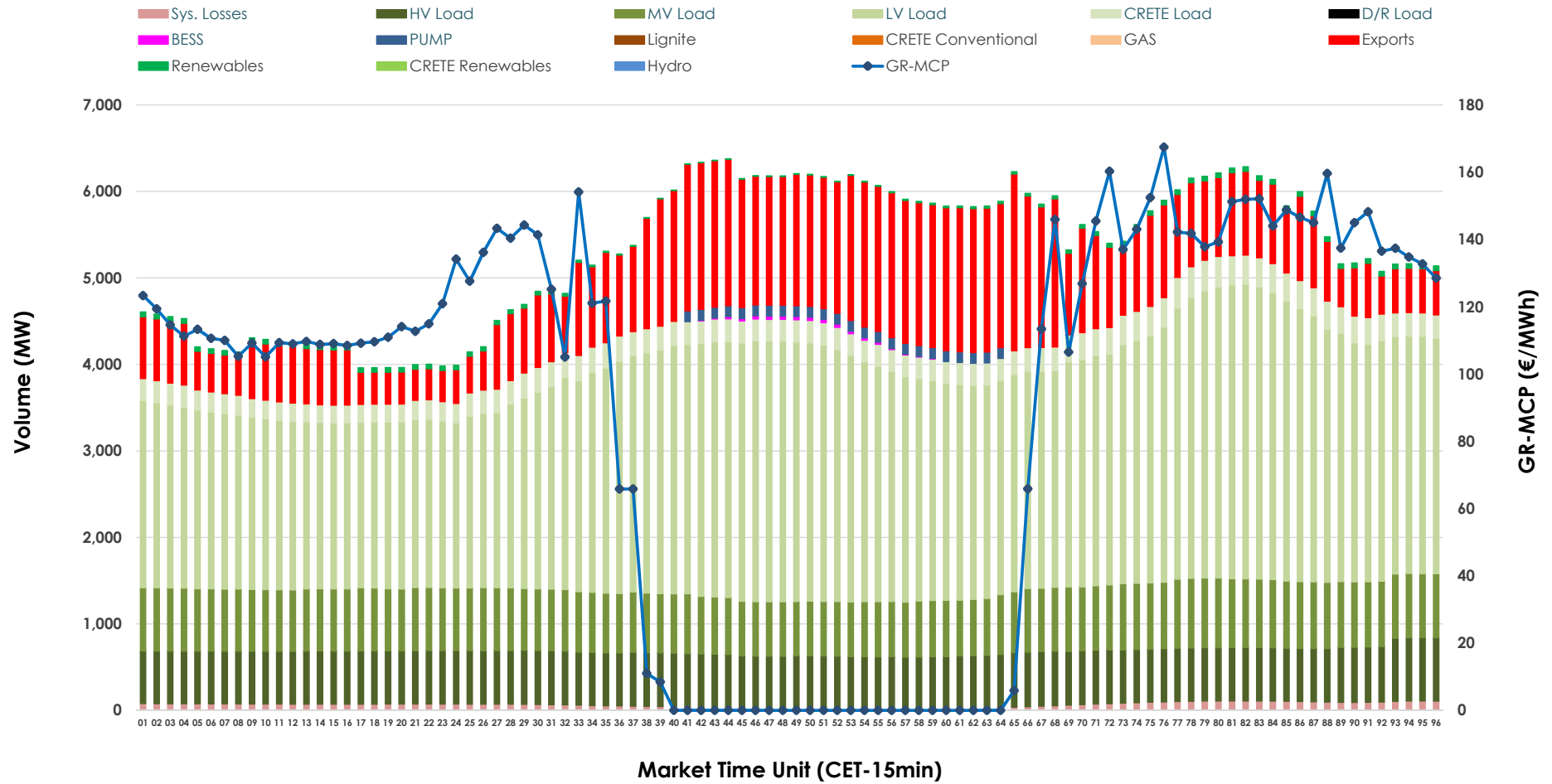


# Day-Ahead Market Outlook

13.04.2026 Day-Ahead Market - Sell



### 13.04.2026 Day-Ahead Market - Buy



### GR Bidding Zone Weekly Figures

Delivery Day	07.04	08.04	09.04	10.04	11.04	12.04	13.04
	↗ 21%	↘ -6%	↗ 17%	↗ 1%	↘ -8%	↘ -9%	↗ 13%
<b>Avg.MCP (€/MWh)</b>	85.32	80.41	94.31	95.30	87.39	79.79	90.06
<b>Max.MCP (€/MWh)</b>	204.50	188.91	186.55	195.45	187.36	157.05	167.43
<b>Min.MCP (€/MWh)</b>	-5.30	-10.00	-0.20	-11.00	0.00	-0.41	0.00
	↗ 8%	↘ -3%	→ 0%	↘ -5%	↘ -16%	↘ -4%	↗ 9%
<b>Tot.Vol(GWh)</b>	316.70	308.22	307.58	293.32	245.55	234.70	254.95

### Trades by Order Type

Delivery Day		07.04	08.04	09.04	10.04	11.04	12.04	13.04	
<b>Ord Price Type</b>		<b>Sell &amp; Buy Trades in (GWh) per Price Type</b>							<b>(%)</b>
<b>PPT</b>	(S)	50.282	57.974	46.078	45.843	36.771	39.180	44.572	34.97%
<b>HBD</b>	(S)	65.823	65.356	66.565	63.588	51.590	49.183	54.680	42.89%
<b>BLK</b>	(S)	26.897	23.861	29.612	27.799	23.858	17.179	21.227	16.65%
<b>CPL</b>	(S)	15.351	6.920	11.536	9.432	10.557	11.806	6.996	5.49%
<b>PPT</b>	(B)	14.822	14.696	14.403	14.353	13.243	12.221	12.074	9.47%
<b>HBD</b>	(B)	133.078	129.253	128.131	117.012	106.422	96.846	104.111	81.67%
<b>BLK</b>	(B)	0.000	0.000	0.000	0.000	0.000	0.000	0.000	0.00%
<b>CPL</b>	(B)	10.452	10.162	11.257	15.297	3.111	8.282	11.289	8.86%
		<b>Sell &amp; Buy Orders Traded per Price Type</b>							<b>(%)</b>
<b>PPT</b>	(S)	1462	1471	1484	1489	1463	1465	1461	34.44%
<b>HBD</b>	(S)	2864	2687	3007	2818	2888	2576	2768	65.25%
<b>BLK</b>	(S)	12	10	14	13	12	12	13	0.31%
<b>PPT</b>	(B)	2350	2364	2345	2358	2369	2374	2349	35.38%
<b>HBD</b>	(B)	4032	4113	4014	4151	4083	4193	4291	64.62%
<b>BLK</b>	(B)	0	0	0	0	0	0	0	0.00%

- MCP** Market Clearing Price (€/MWh)
- PPT** Priority Price-Taking
- HBD** Hybrid
- BLK** Block
- CPL** Market Coupling Flow

### Trade's Volume Mix

		Sell - MWh	Buy - MWh	
<b>Lignite</b>	(3.4%)	4,392	0	(0.0%)
<b>Crete Conv.</b>	(0.0%)	0	0	(0.0%)
<b>Gas</b>	(25.7%)	32,808	0	(0.0%)
<b>Hydro</b>	(6.7%)	8,553	0	(0.0%)
<b>Imports</b>	(8.2%)	10,514		
<b>RES</b>	(55.1%)	70,236	902	(0.7%)
<b>Crete RES</b>	(0.7%)	875	0	(0.0%)
<b>BESS</b>	(0.1%)	97	115	(0.1%)
<b>HV Load</b>	(0.0%)	0	14,862	(11.7%)
<b>MV Load</b>	(0.0%)	0	17,132	(13.4%)
<b>LV Load</b>	(0.0%)	0	61,564	(48.3%)
<b>Crete Load</b>	(0.0%)	0	6,528	(5.1%)
<b>Pumping</b>	(0.0%)	0	750	(0.6%)
<b>Exports</b>			24,051	(18.9%)
<b>Sys.Losses</b>	(0.0%)	0	1,570	(1.2%)
<b>D/R Load</b>	(0.0%)	0	0	(0.0%)

