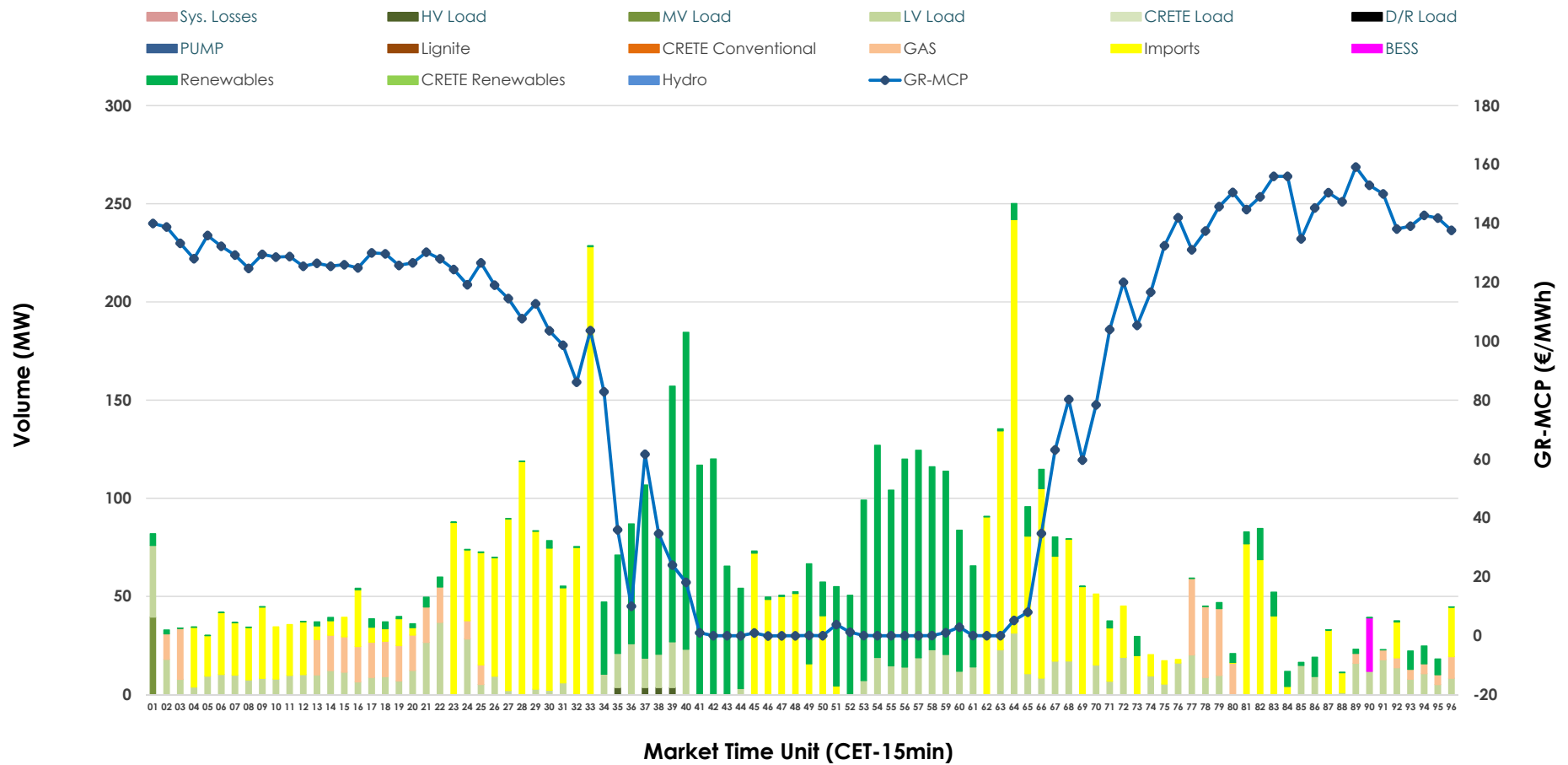


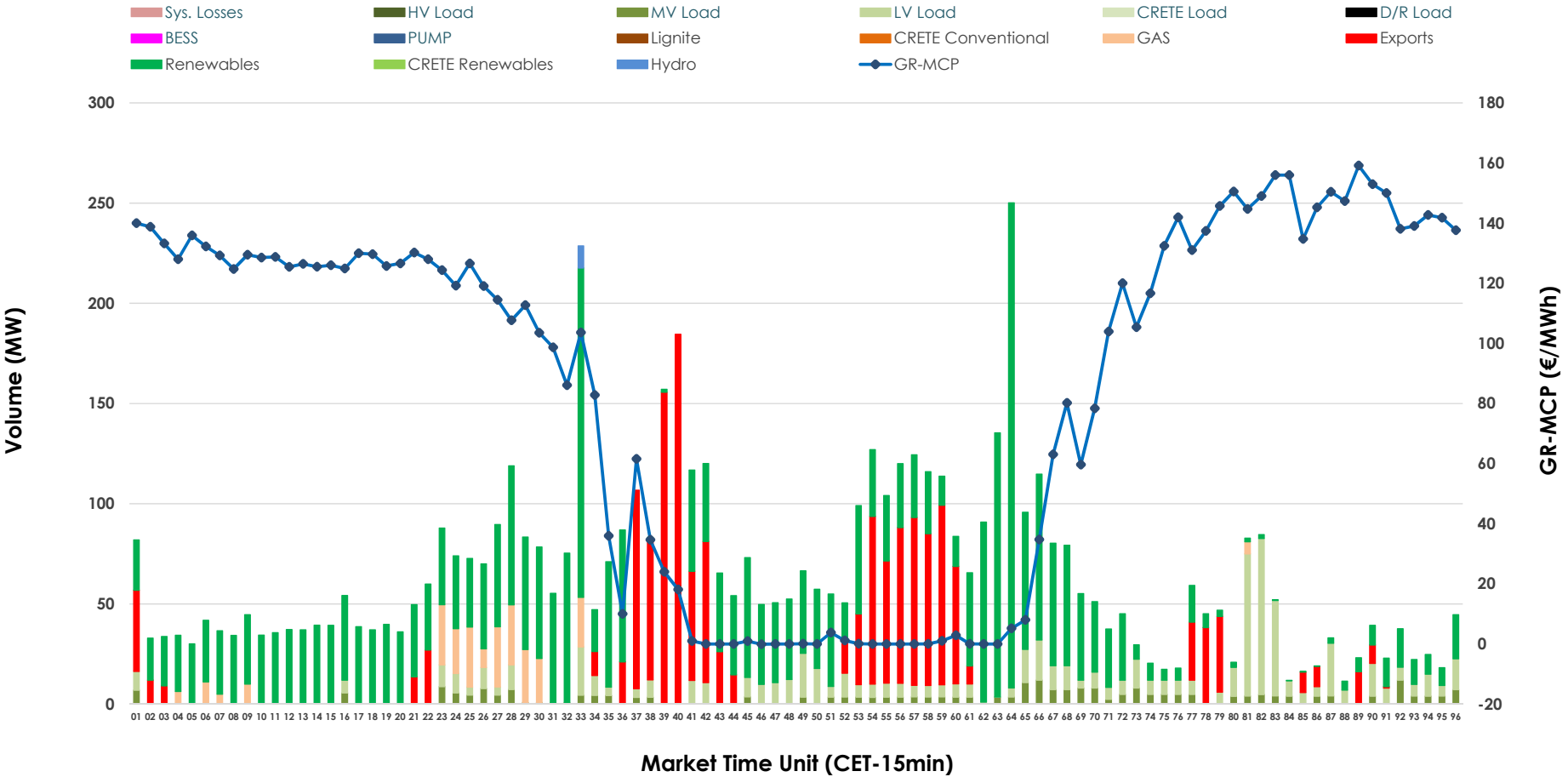


# IDA '2' Market Outlook

31.05.2026 IDA '2' Market - Sell



### 31.05.2026 IDA '2' Market - Buy



### GR Bidding Zone Weekly Figures

Delivery Day	25.05	26.05	27.05	28.05	29.05	30.05	31.05
	↗ 17%	↗ 11%	↗ 15%	↘ -1%	↘ -13%	↗ 13%	↘ -5%
<b>Avg.MCP (€/MWh)</b>	73.39	81.31	93.58	92.19	80.51	90.81	86.46
<b>Max.MCP (€/MWh)</b>	172.51	196.92	268.78	199.16	160.91	201.29	159.14
<b>Min.MCP (€/MWh)</b>	-8.25	-15.17	-11.11	-1.86	-14.99	-4.54	-0.07
	↗ 31%	↘ -11%	↘ -7%	↗ 35%	↘ -8%	↘ -30%	↘ -11%
<b>Tot.Vol(GWh)</b>	4.89	4.34	4.02	5.44	5.03	3.54	3.14

### Trades by Order Type

Delivery Day		25.05	26.05	27.05	28.05	29.05	30.05	31.05	
<b>Ord Price Type</b>		<b>Sell &amp; Buy Trades in (GWh) per Price Type</b>							<b>(%)</b>
<b>PPT</b>	(S)	0.000	0.000	0.000	0.000	0.000	0.000	0.000	0.00%
<b>HBD</b>	(S)	2.126	2.046	1.716	1.560	2.192	1.069	0.887	56.51%
<b>BLK</b>	(S)	0.000	0.000	0.000	0.000	0.000	0.000	0.000	0.00%
<b>CPL</b>	(S)	0.321	0.123	0.292	1.160	0.321	0.700	0.683	43.49%
<b>PPT</b>	(B)	0.000	0.000	0.000	0.000	0.000	0.000	0.000	0.00%
<b>HBD</b>	(B)	1.255	1.174	1.404	2.256	1.172	1.405	1.182	75.30%
<b>BLK</b>	(B)	0.000	0.000	0.000	0.000	0.000	0.000	0.000	0.00%
<b>CPL</b>	(B)	1.192	0.995	0.604	0.464	1.341	0.364	0.388	24.70%
		<b>Sell &amp; Buy Orders Traded per Price Type</b>							<b>(%)</b>
<b>PPT</b>	(S)	0	0	0	0	0	0	0	0.00%
<b>HBD</b>	(S)	303	282	405	300	377	161	149	100.00%
<b>BLK</b>	(S)	0	0	0	0	0	0	0	0.00%
<b>PPT</b>	(B)	0	0	0	0	0	0	0	0.00%
<b>HBD</b>	(B)	632	354	446	421	391	435	357	100.00%
<b>BLK</b>	(B)	0	0	0	0	0	0	0	0.00%

- MCP** Market Clearing Price (€/MWh)
- PPT** Priority Price-Taking
- HBD** Hybrid
- BLK** Block
- CPL** Market Coupling Flow

### Trade's Volume Mix

		Sell - MWh	Buy - MWh	
<b>Lignite</b>	(0.0%)	0	0	(0.0%)
<b>Crete Conv.</b>	(0.0%)	0	0	(0.0%)
<b>Gas</b>	(6.4%)	101	66	(4.2%)
<b>Hydro</b>	(0.0%)	0	3	(0.2%)
<b>Imports</b>	(43.5%)	683		
<b>RES</b>	(33.7%)	528	851	(54.2%)
<b>Crete RES</b>	(0.0%)	0	0	(0.0%)
<b>BESS</b>	(0.4%)	7	0	(0.0%)
<b>HV Load</b>	(0.2%)	4	0	(0.0%)
<b>MV Load</b>	(0.6%)	10	70	(4.4%)
<b>LV Load</b>	(15.1%)	237	193	(12.3%)
<b>Crete Load</b>	(0.0%)	0	0	(0.0%)
<b>Pumping</b>	(0.0%)	0	0	(0.0%)
<b>Exports</b>			388	(24.7%)
<b>Sys.Losses</b>	(0.0%)	0	0	(0.0%)
<b>D/R Load</b>	(0.0%)	0	0	(0.0%)

