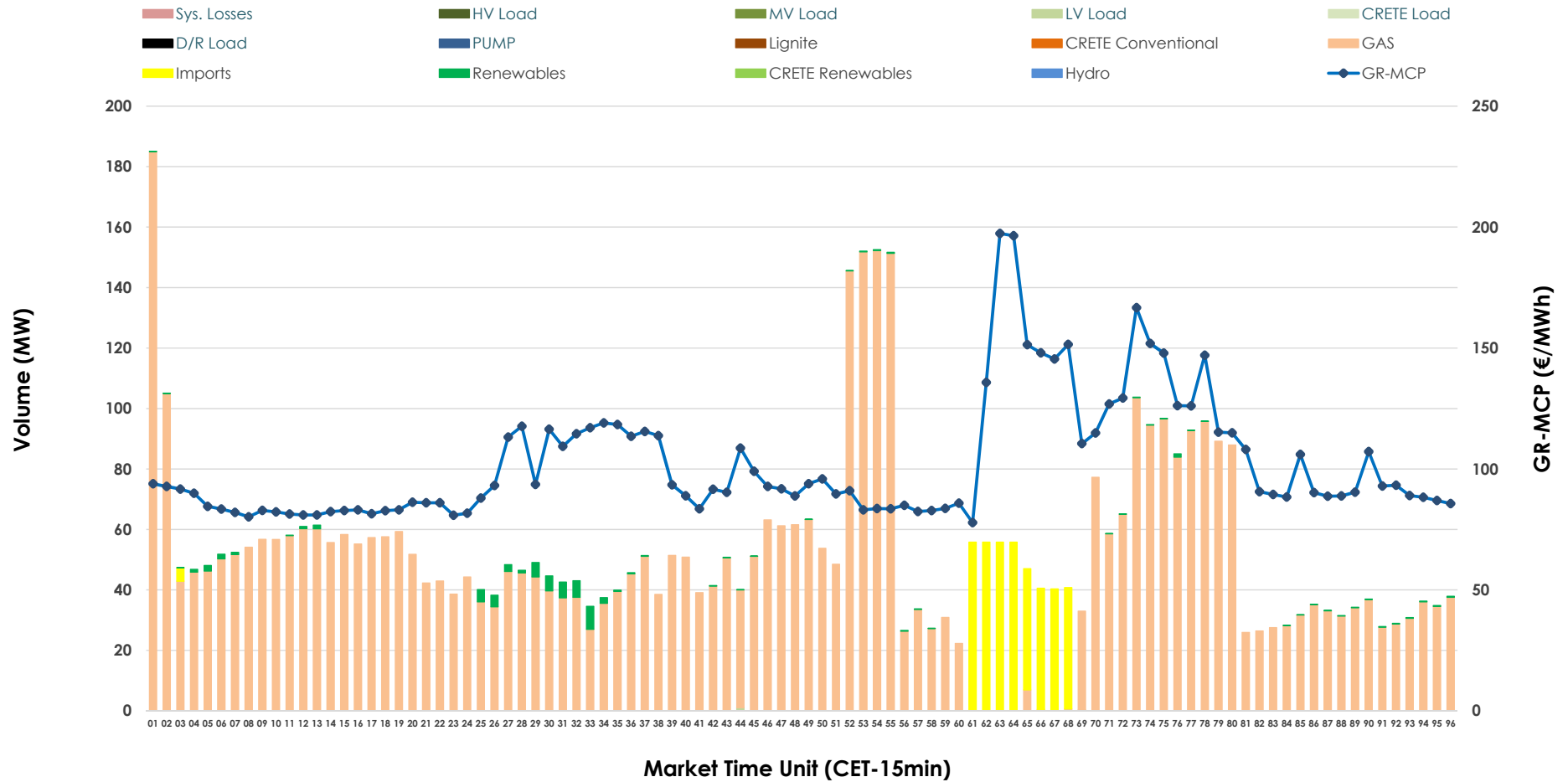


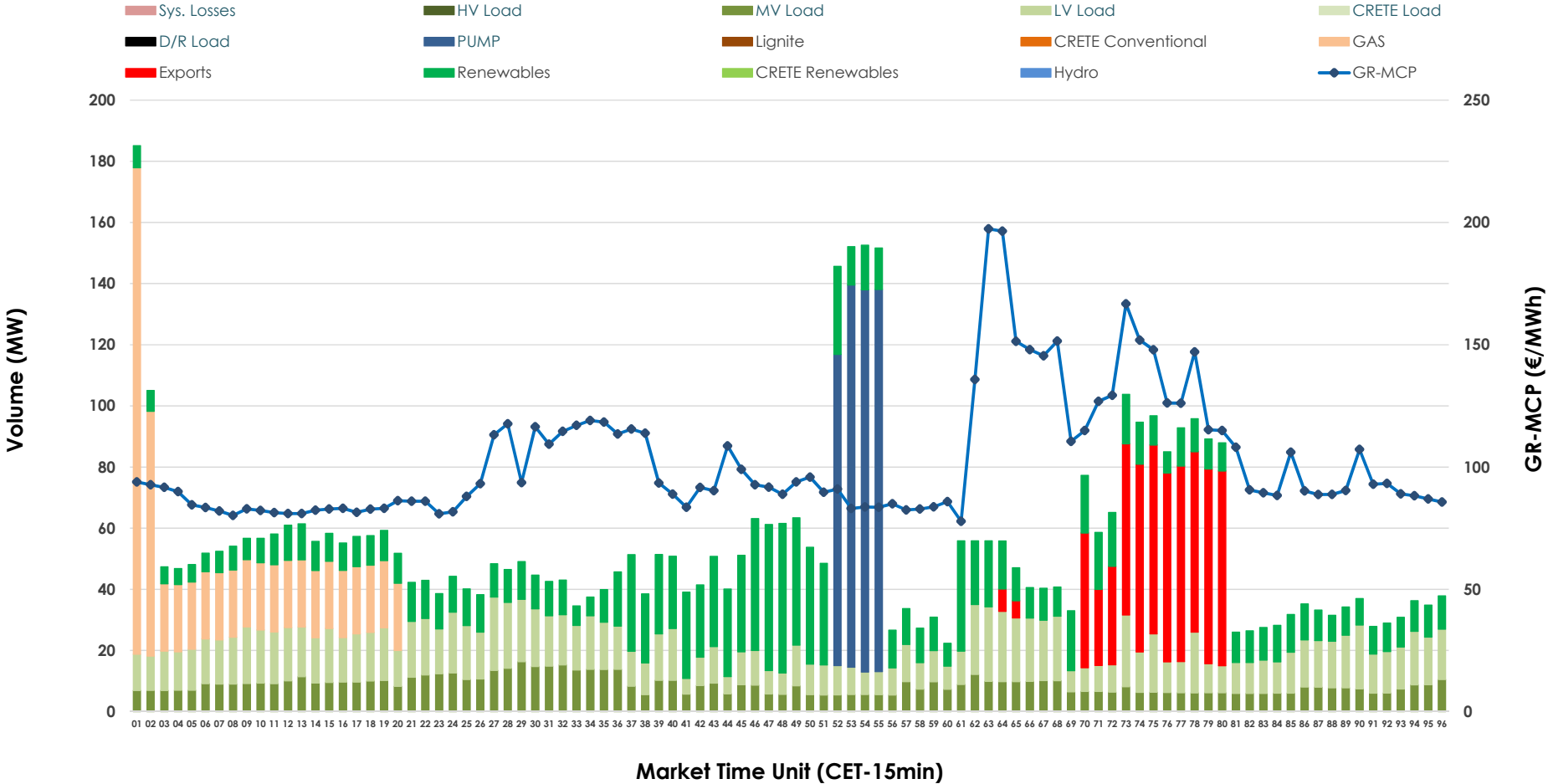


# IDA '1' Market Outlook

26.01.2026 IDA '1' Market - Sell



### 26.01.2026 IDA '1' Market - Buy



### GR Bidding Zone Weekly Figures

Delivery Day	20.01	21.01	22.01	23.01	24.01	25.01	26.01
	↗ 2%	↕ 36%	↗ 14%	→ 0%	↘ -20%	↘ -25%	↗ 1%
<b>Avg.MCP (€/MWh)</b>	107.17	145.86	166.96	167.03	133.89	100.70	102.10
<b>Max.MCP (€/MWh)</b>	198.60	238.09	328.19	340.95	173.40	146.30	197.38
<b>Min.MCP (€/MWh)</b>	65.42	105.60	116.92	95.84	94.95	0.02	77.81
	↘ -7%	↕ 207%	↘ -40%	↕ 75%	↘ -51%	↘ -12%	↘ -10%
<b>Tot.Vol(GWh)</b>	2.15	6.60	3.96	6.92	3.38	2.98	2.67

### Trades by Order Type

Delivery Day		20.01	21.01	22.01	23.01	24.01	25.01	26.01	
<b>Ord Price Type</b>		<b>Sell &amp; Buy Trades in (GWh) per Price Type</b>							<b>(%)</b>
<b>PPT</b>	(S)	0.000	0.000	0.000	0.000	0.000	0.000	0.000	0.00%
<b>HBD</b>	(S)	1.030	2.312	1.980	3.419	1.041	1.350	1.239	92.74%
<b>BLK</b>	(S)	0.000	0.000	0.000	0.000	0.000	0.000	0.000	0.00%
<b>CPL</b>	(S)	0.045	0.987	0.000	0.042	0.650	0.137	0.097	7.26%
<b>PPT</b>	(B)	0.000	0.000	0.000	0.000	0.000	0.000	0.000	0.00%
<b>HBD</b>	(B)	0.935	1.968	0.905	0.829	0.907	0.981	1.185	88.67%
<b>BLK</b>	(B)	0.000	0.000	0.000	0.000	0.000	0.000	0.000	0.00%
<b>CPL</b>	(B)	0.140	1.331	1.076	2.632	0.784	0.507	0.151	11.33%
		<b>Sell &amp; Buy Orders Traded per Price Type</b>							<b>(%)</b>
<b>PPT</b>	(S)	0	0	0	0	0	0	0	0.00%
<b>HBD</b>	(S)	227	202	193	327	274	66	60	100.00%
<b>BLK</b>	(S)	0	0	0	0	0	0	0	0.00%
<b>PPT</b>	(B)	0	0	0	0	0	0	0	0.00%
<b>HBD</b>	(B)	681	734	557	567	607	665	805	100.00%
<b>BLK</b>	(B)	0	0	0	0	0	0	0	0.00%

**MCP** Market Clearing Price (€/MWh)  
**PPT** Priority Price-Taking  
**HBD** Hybrid  
**BLK** Block  
**CPL** Market Coupling Flow

### Trade's Volume Mix

		Sell - MWh		Buy - MWh	
<b>Lignite</b>	(0.0%)	0	0	0	(0.0%)
<b>Crete Conv.</b>	(0.0%)	0	0	0	(0.0%)
<b>Gas</b>	(91.7%)	1,225	159		(11.9%)
<b>Hydro</b>	(0.0%)	0	0		(0.0%)
<b>Imports</b>	(7.3%)	97			
<b>RES</b>	(1.0%)	14	357		(26.7%)
<b>Crete RES</b>	(0.0%)	0	0		(0.0%)
<b>HV Load</b>	(0.0%)	0	0		(0.0%)
<b>MV Load</b>	(0.0%)	0	210		(15.7%)
<b>LV Load</b>	(0.0%)	0	340		(25.4%)
<b>Crete Load</b>	(0.0%)	0	0		(0.0%)
<b>Pumping</b>	(0.0%)	0	119		(8.9%)
<b>Exports</b>			151		(11.3%)
<b>Sys.Losses</b>	(0.0%)	0	0		(0.0%)
<b>D/R Load</b>	(0.0%)	0	0		(0.0%)

