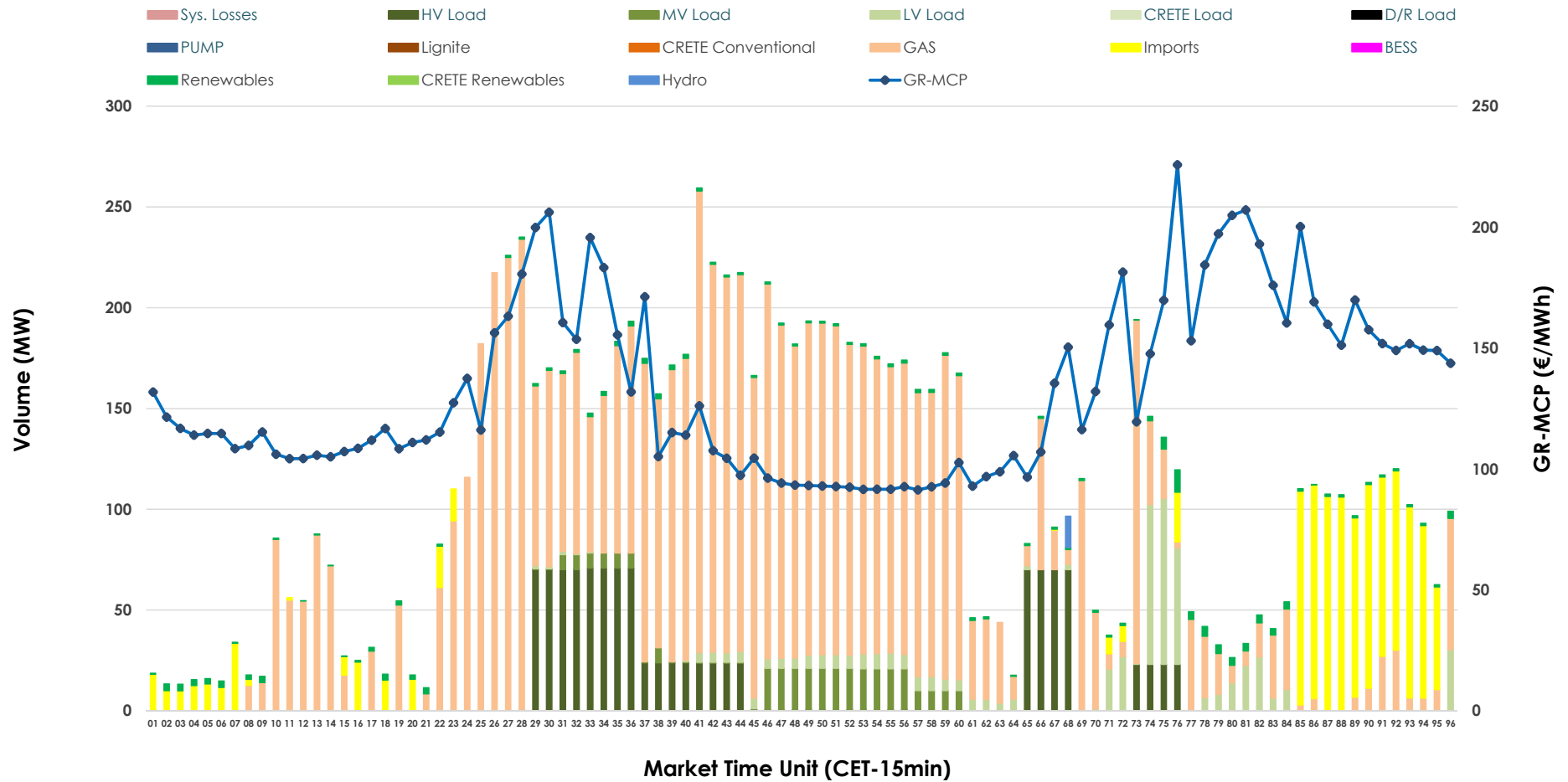


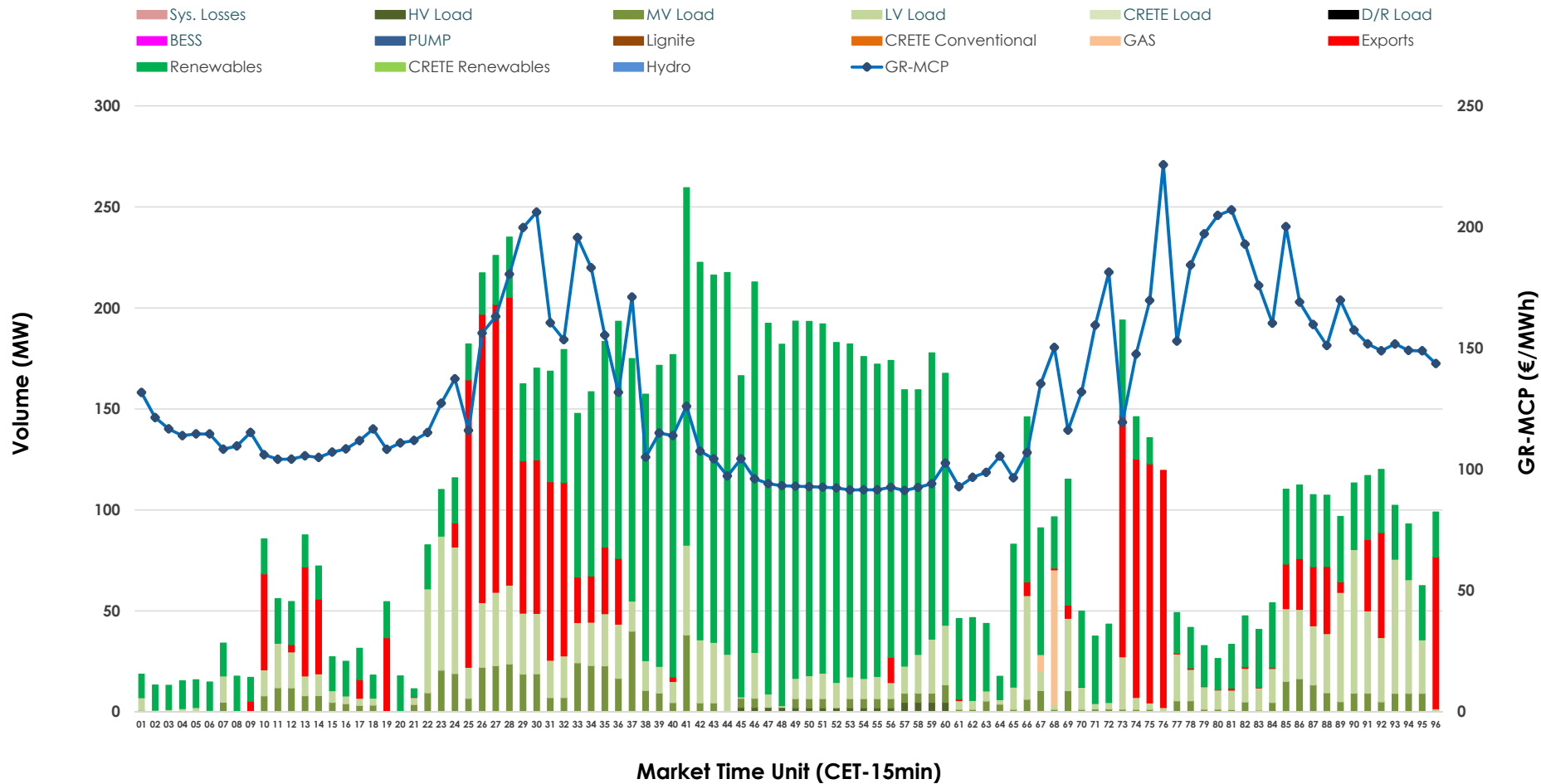


IDA '1' Market Outlook

31.03.2026 IDA '1' Market - Sell



31.03.2026 IDA '1' Market - Buy



GR Bidding Zone Weekly Figures

Delivery Day	25.03	26.03	27.03	28.03	29.03	30.03	31.03
	👇 -29%	👆 7%	👆 14%	👇 -9%	👇 -16%	👆 66%	👆 11%
Avg.MCP (€/MWh)	77.08	82.14	93.92	85.15	71.83	119.14	132.20
Max.MCP (€/MWh)	206.42	175.68	158.93	168.64	149.89	225.95	225.72
Min.MCP (€/MWh)	-8.09	-5.14	-2.58	6.75	-14.99	4.21	91.35
	👆 26%	👆 15%	👇 -14%	👇 -8%	👇 -9%	👆 6%	👆 59%
Tot.Vol(GWh)	3.82	4.41	3.77	3.48	3.15	3.36	5.35

Trades by Order Type

Delivery Day		25.03	26.03	27.03	28.03	29.03	30.03	31.03	
Ord Price Type		Sell & Buy Trades in (GWh) per Price Type							(%)
PPT	(S)	0.000	0.000	0.000	0.000	0.000	0.000	0.000	0.00%
HBD	(S)	1.727	2.119	1.303	1.243	1.282	1.302	2.355	88.06%
BLK	(S)	0.000	0.000	0.000	0.000	0.000	0.000	0.000	0.00%
CPL	(S)	0.185	0.084	0.584	0.494	0.296	0.377	0.319	11.94%
PPT	(B)	0.000	0.000	0.000	0.000	0.000	0.000	0.000	0.00%
HBD	(B)	1.606	1.166	1.722	1.233	1.228	1.400	2.175	81.35%
BLK	(B)	0.000	0.000	0.000	0.000	0.000	0.000	0.000	0.00%
CPL	(B)	0.305	1.037	0.165	0.505	0.349	0.280	0.499	18.65%
		Sell & Buy Orders Traded per Price Type							(%)
PPT	(S)	0	0	0	0	0	0	0	0.00%
HBD	(S)	234	203	261	290	326	176	376	100.00%
BLK	(S)	0	0	0	0	0	0	0	0.00%
PPT	(B)	0	0	0	0	0	0	0	0.00%
HBD	(B)	865	738	860	694	812	860	719	100.00%
BLK	(B)	0	0	0	0	0	0	0	0.00%

- MCP** Market Clearing Price (€/MWh)
- PPT** Priority Price-Taking
- HBD** Hybrid
- BLK** Block
- CPL** Market Coupling Flow

Trade's Volume Mix

		Sell - MWh	Buy - MWh	
Lignite	(0.0%)	0	0	(0.0%)
Crete Conv.	(0.0%)	0	0	(0.0%)
Gas	(67.6%)	1,809	19	(0.7%)
Hydro	(0.1%)	4	0	(0.0%)
Imports	(11.9%)	319		
RES	(1.5%)	41	1,525	(57.0%)
Crete RES	(0.0%)	0	0	(0.0%)
BESS	(0.0%)	0	0	(0.0%)
HV Load	(10.6%)	283	11	(0.4%)
MV Load	(3.0%)	81	175	(6.5%)
LV Load	(5.1%)	137	446	(16.7%)
Crete Load	(0.0%)	0	0	(0.0%)
Pumping	(0.0%)	0	0	(0.0%)
Exports			499	(18.6%)
Sys.Losses	(0.0%)	0	0	(0.0%)
D/R Load	(0.0%)	0	0	(0.0%)

