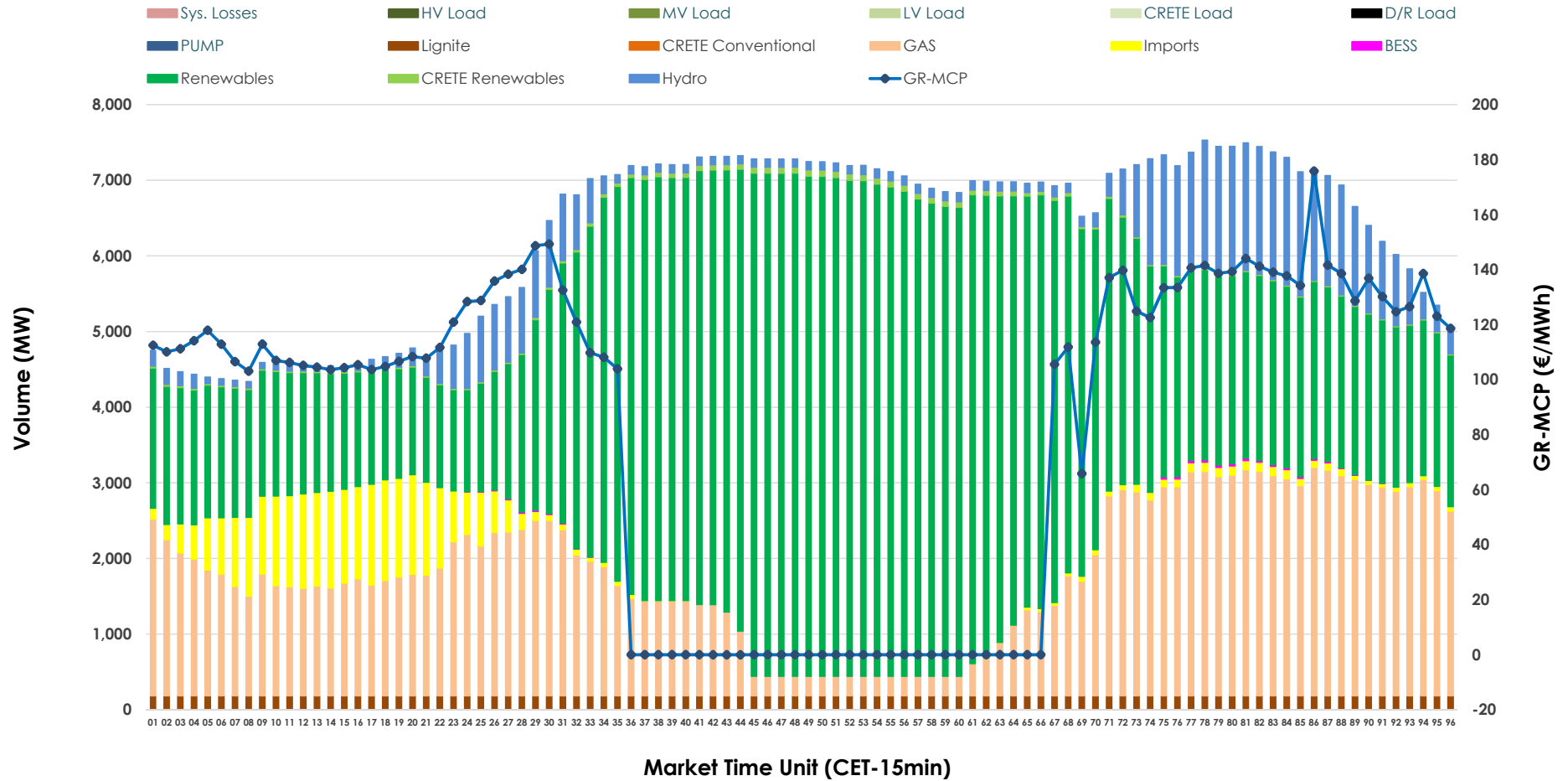


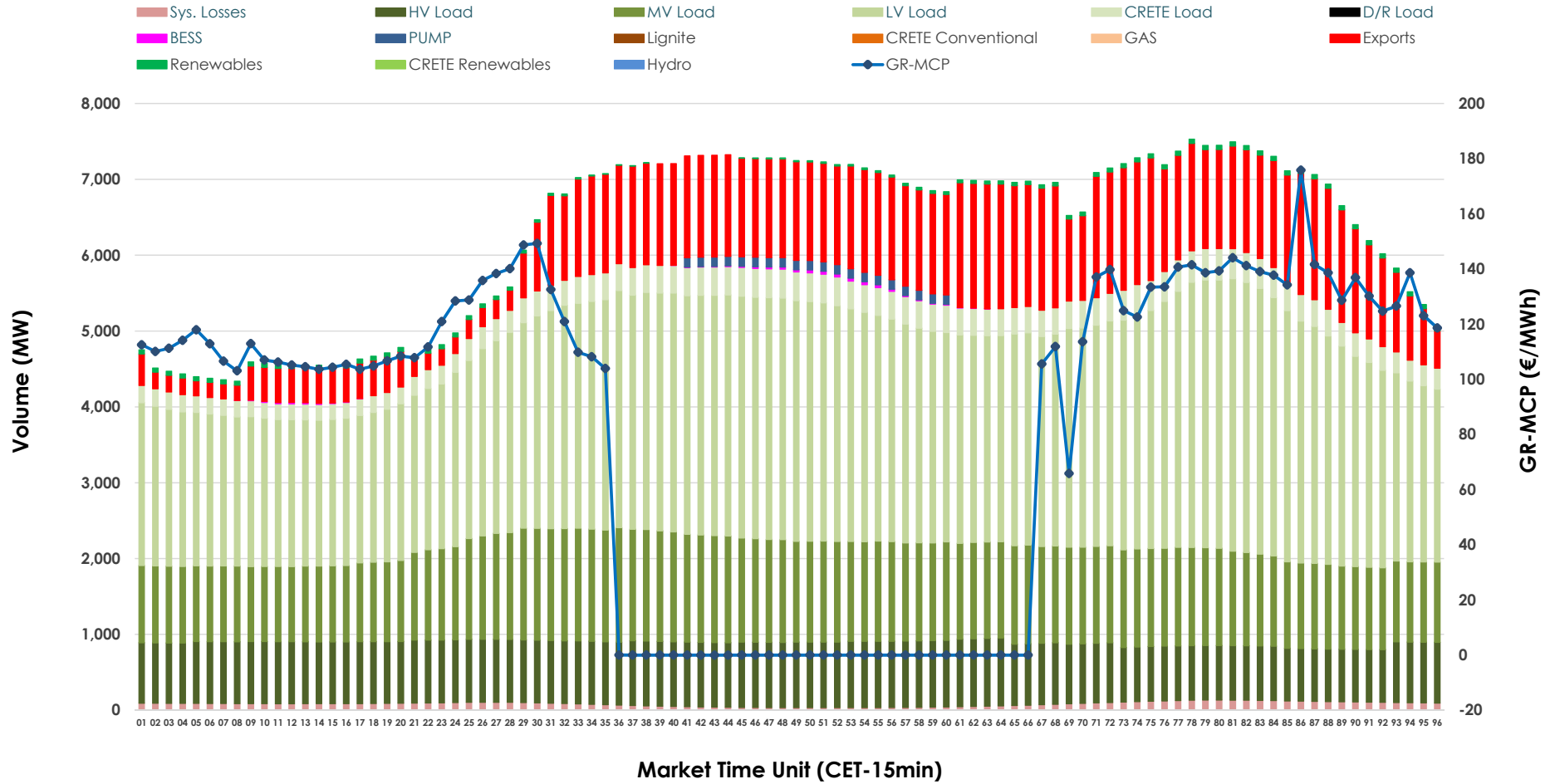


Day-Ahead Market Outlook

21.04.2026 Day-Ahead Market - Sell



21.04.2026 Day-Ahead Market - Buy



GR Bidding Zone Weekly Figures

Delivery Day	15.04	16.04	17.04	18.04	19.04	20.04	21.04
	↓ -5%	↓ -27%	↓ -16%	↓ -13%	↑ 6%	↑ 16%	→ 0%
Avg.MCP (€/MWh)	125.87	91.60	77.40	67.33	71.68	83.41	83.07
Max.MCP (€/MWh)	176.29	214.54	167.98	151.85	166.45	179.47	175.83
Min.MCP (€/MWh)	64.00	0.00	-0.10	-9.50	-8.30	-0.10	-0.01
	↑ 5%	↑ 6%	↓ -4%	↓ -8%	↓ -11%	↑ 12%	↑ 3%
Tot.Vol(GWh)	312.79	331.04	318.07	292.47	260.85	293.37	302.62

Trades by Order Type

Delivery Day		15.04	16.04	17.04	18.04	19.04	20.04	21.04	
Ord Price Type		Sell & Buy Trades in (GWh) per Price Type							(%)
PPT	(S)	45.887	64.098	74.510	71.097	54.859	50.668	56.261	37.18%
HBD	(S)	65.234	74.728	66.668	58.837	50.588	64.774	64.943	42.92%
BLK	(S)	35.606	24.879	17.787	15.650	19.613	21.500	24.410	16.13%
CPL	(S)	9.669	1.814	0.070	0.653	5.365	9.746	5.696	3.76%
PPT	(B)	12.730	13.676	12.831	12.306	11.769	12.952	12.970	8.57%
HBD	(B)	133.448	134.083	130.557	119.439	111.146	124.208	122.287	80.82%
BLK	(B)	0.000	0.000	0.000	0.000	0.000	0.000	0.000	0.00%
CPL	(B)	10.218	17.760	15.647	14.493	7.510	9.527	16.052	10.61%
		Sell & Buy Orders Traded per Price Type							(%)
PPT	(S)	1488	1493	1585	1502	1522	1582	1687	36.65%
HBD	(S)	3247	2815	2550	2380	2585	2893	2905	63.11%
BLK	(S)	16	13	10	8	12	8	11	0.24%
PPT	(B)	2317	2353	2363	2270	2258	2318	2312	35.60%
HBD	(B)	4131	4190	4224	4214	4123	4138	4183	64.40%
BLK	(B)	0	0	0	0	0	0	0	0.00%

- MCP** Market Clearing Price (€/MWh)
- PPT** Priority Price-Taking
- HBD** Hybrid
- BLK** Block
- CPL** Market Coupling Flow

Trade's Volume Mix

		Sell - MWh	Buy - MWh	
Lignite	(2.9%)	4,392	0	(0.0%)
Crete Conv.	(0.0%)	0	0	(0.0%)
Gas	(26.6%)	40,211	0	(0.0%)
Hydro	(7.9%)	12,023	0	(0.0%)
Imports	(4.6%)	7,034		
RES	(57.2%)	86,619	945	(0.6%)
Crete RES	(0.6%)	909	0	(0.0%)
BESS	(0.1%)	121	142	(0.1%)
HV Load	(0.0%)	0	19,391	(12.8%)
MV Load	(0.0%)	0	29,695	(19.6%)
LV Load	(0.0%)	0	65,754	(43.5%)
Crete Load	(0.0%)	0	7,734	(5.1%)
Pumping	(0.0%)	0	625	(0.4%)
Exports			25,044	(16.6%)
Sys.Losses	(0.0%)	0	1,979	(1.3%)
D/R Load	(0.0%)	0	0	(0.0%)

