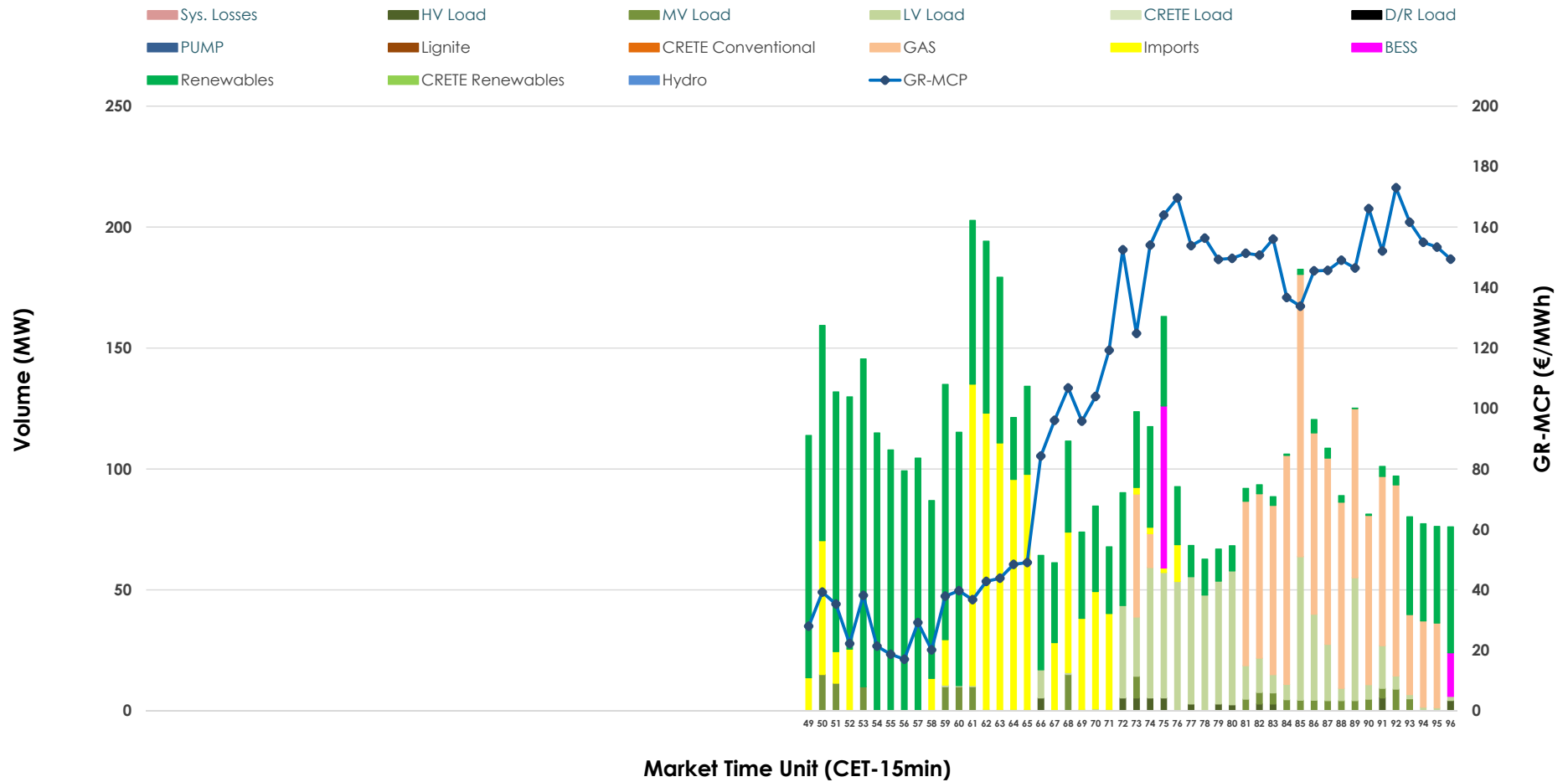


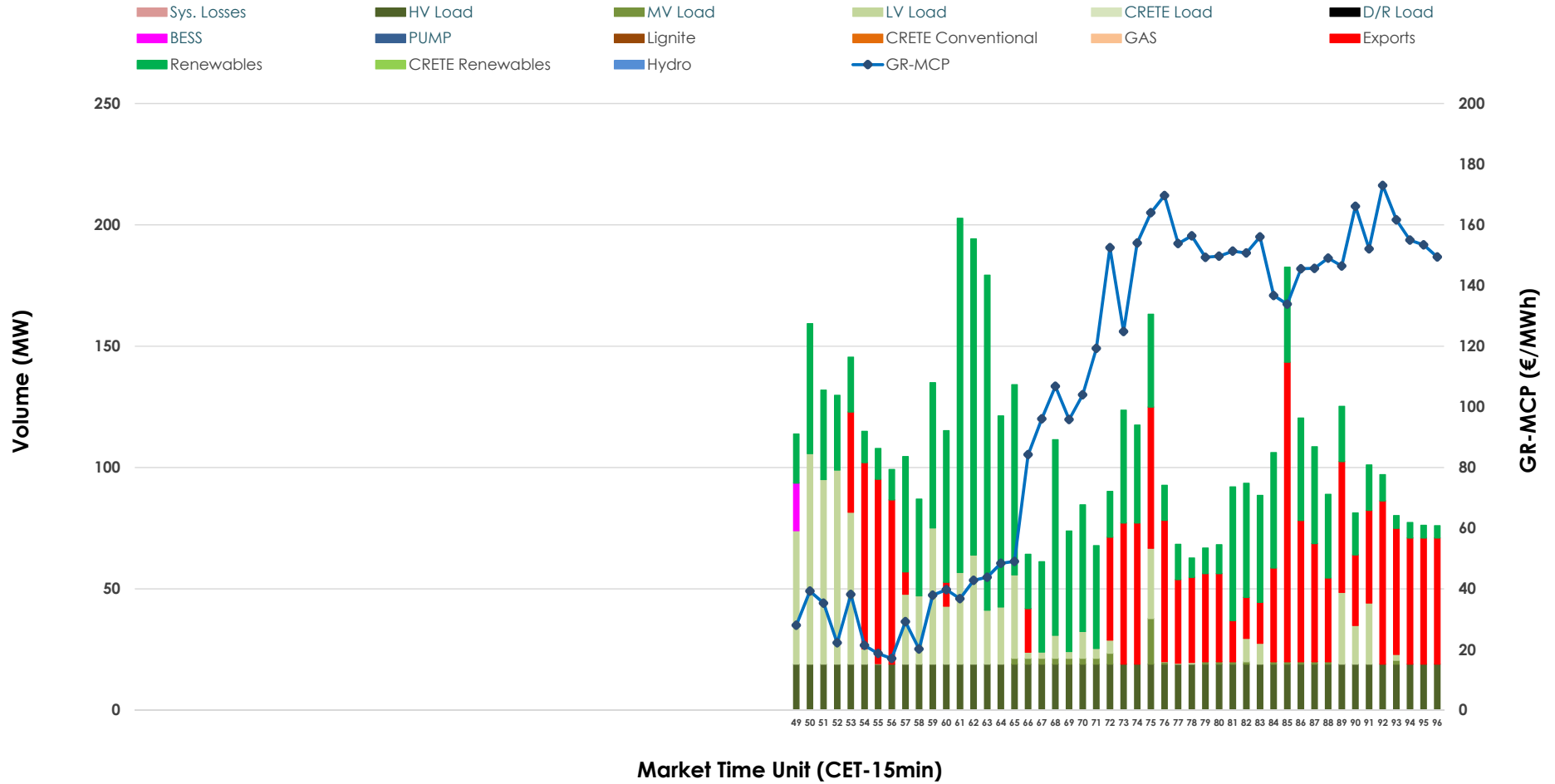


IDA '3' Market Outlook

16.06.2026 IDA '3' Market - Sell



16.06.2026 IDA '3' Market - Buy



GR Bidding Zone Weekly Figures

Delivery Day	10.06	11.06	12.06	13.06	14.06	15.06	16.06
	↗ 5%	↘ -14%	↗ 5%	↘ -57%	↗ 43%	↗ 34%	↗ 15%
Avg.MCP (€/MWh)	121.94	104.93	110.09	46.84	67.00	89.94	103.63
Max.MCP (€/MWh)	197.81	162.38	171.30	124.40	156.76	173.21	173.00
Min.MCP (€/MWh)	-6.35	35.10	79.76	-25.47	-8.70	8.51	17.05
	↘ -13%	↗ 31%	↘ -57%	↘ -28%	↗ 129%	↘ -6%	↗ 18%
Tot.Vol(GWh)	2.48	3.26	1.42	1.02	2.34	2.20	2.59

Trades by Order Type

Delivery Day		10.06	11.06	12.06	13.06	14.06	15.06	16.06	
Ord Price Type		Sell & Buy Trades in (GWh) per Price Type							(%)
PPT	(S)	0.000	0.000	0.000	0.000	0.000	0.000	0.000	0.00%
HBD	(S)	0.406	0.777	0.697	0.500	0.954	0.873	1.066	82.19%
BLK	(S)	0.000	0.000	0.000	0.000	0.000	0.000	0.000	0.00%
CPL	(S)	0.836	0.855	0.011	0.010	0.214	0.226	0.231	17.81%
PPT	(B)	0.000	0.000	0.000	0.000	0.000	0.000	0.000	0.00%
HBD	(B)	0.618	0.702	0.345	0.454	0.381	0.811	0.930	71.72%
BLK	(B)	0.000	0.000	0.000	0.000	0.000	0.000	0.000	0.00%
CPL	(B)	0.625	0.930	0.363	0.057	0.788	0.288	0.367	28.28%
		Sell & Buy Orders Traded per Price Type							(%)
PPT	(S)	0	0	0	0	0	0	0	0.00%
HBD	(S)	156	168	278	214	244	271	212	100.00%
BLK	(S)	0	0	0	0	0	0	0	0.00%
PPT	(B)	0	0	0	0	0	0	0	0.00%
HBD	(B)	245	229	184	131	156	348	289	100.00%
BLK	(B)	0	0	0	0	0	0	0	0.00%

- MCP** Market Clearing Price (€/MWh)
- PPT** Priority Price-Taking
- HBD** Hybrid
- BLK** Block
- CPL** Market Coupling Flow

Trade's Volume Mix

		Sell - MWh	Buy - MWh	
Lignite	(0.0%)	0	0	(0.0%)
Crete Conv.	(0.0%)	0	0	(0.0%)
Gas	(21.3%)	276	0	(0.0%)
Hydro	(0.0%)	0	0	(0.0%)
Imports	(17.8%)	231		
RES	(41.9%)	543	478	(36.8%)
Crete RES	(0.0%)	0	0	(0.0%)
BESS	(1.6%)	21	5	(0.4%)
HV Load	(1.0%)	12	228	(17.6%)
MV Load	(3.0%)	38	13	(1.0%)
LV Load	(13.5%)	175	207	(15.9%)
Crete Load	(0.0%)	0	0	(0.0%)
Pumping	(0.0%)	0	0	(0.0%)
Exports			367	(28.3%)
Sys.Losses	(0.0%)	0	0	(0.0%)
D/R Load	(0.0%)	0	0	(0.0%)

