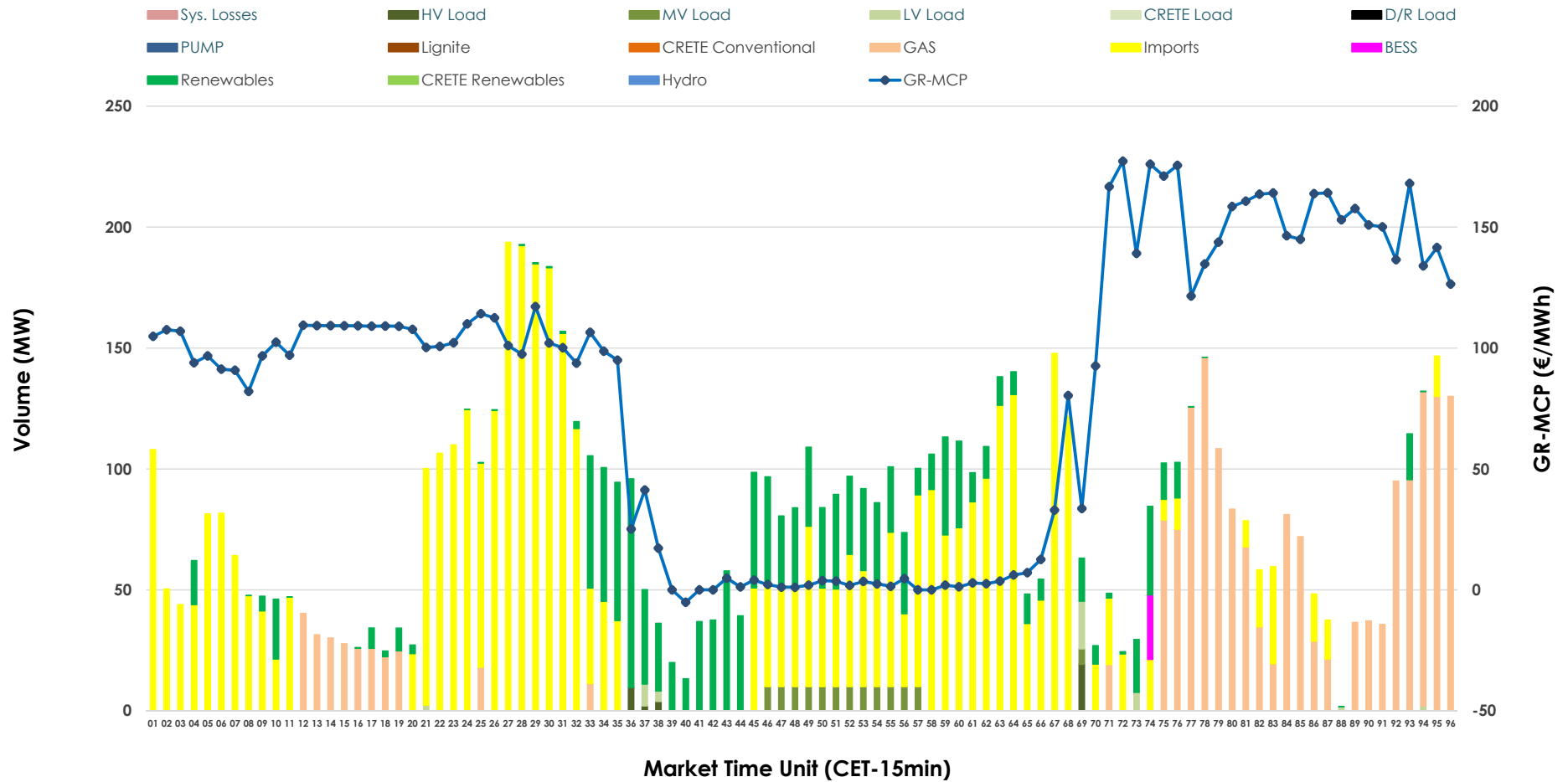


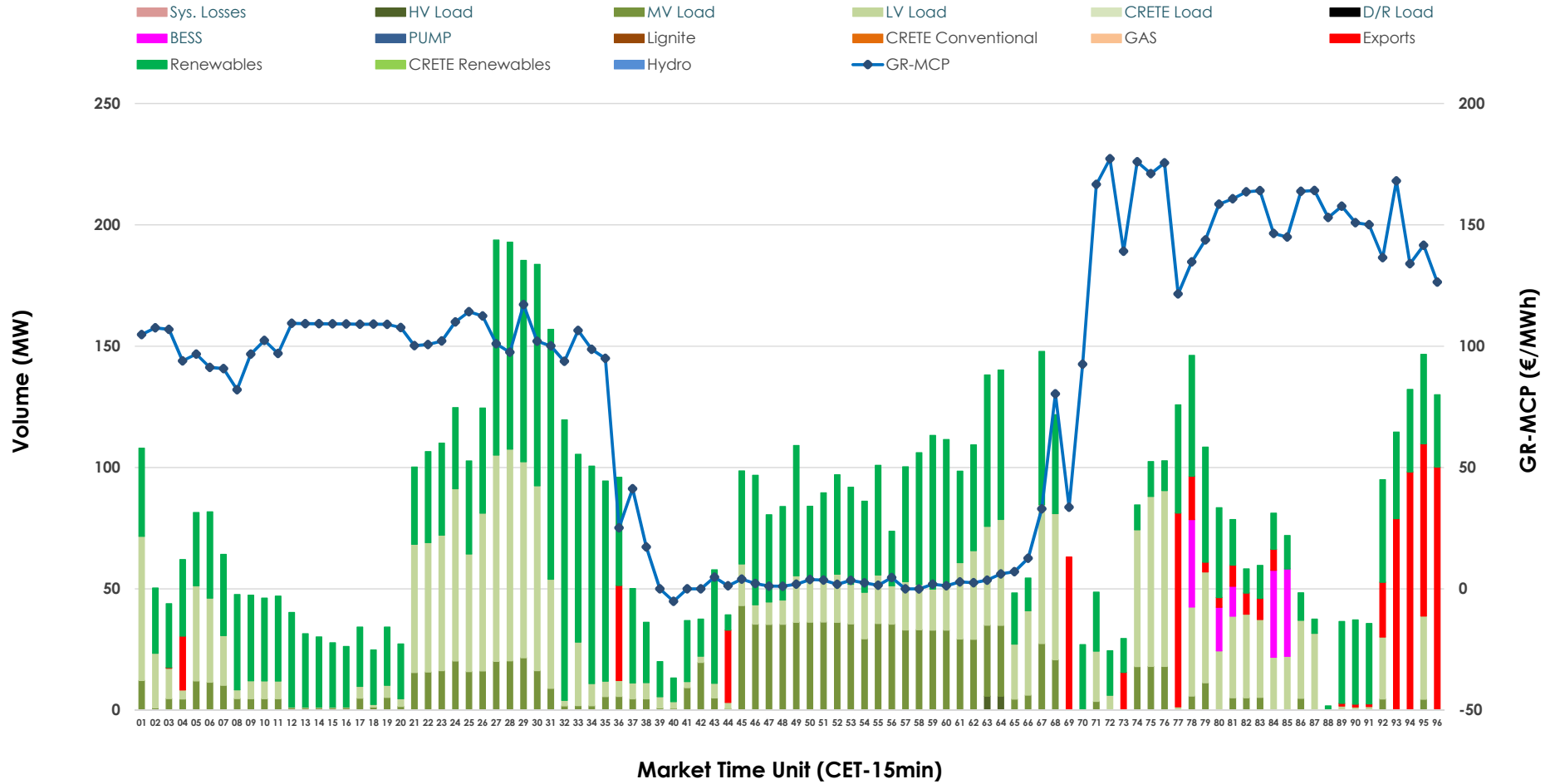


IDA '2' Market Outlook

15.06.2026 IDA '2' Market - Sell



15.06.2026 IDA '2' Market - Buy



GR Bidding Zone Weekly Figures

Delivery Day	09.06	10.06	11.06	12.06	13.06	14.06	15.06
	↗ 18%	↘ -9%	↘ -2%	↗ 8%	↘ -56%	↗ 15%	↗ 47%
Avg.MCP (€/MWh)	116.65	106.30	104.28	112.76	49.42	56.66	83.20
Max.MCP (€/MWh)	225.37	197.85	162.31	172.17	163.27	164.20	177.25
Min.MCP (€/MWh)	-2.01	-5.84	25.13	65.03	-27.97	-15.01	-5.15
	↗ 50%	→ 0%	↗ 75%	↘ -35%	↘ -40%	↗ 56%	↘ -29%
Tot.Vol(GWh)	5.21	5.19	9.06	5.91	3.55	5.52	3.92

Trades by Order Type

Delivery Day		09.06	10.06	11.06	12.06	13.06	14.06	15.06	
Ord Price Type		Sell & Buy Trades in (GWh) per Price Type							(%)
PPT	(S)	0.000	0.000	0.000	0.000	0.000	0.000	0.000	0.00%
HBD	(S)	1.737	2.001	4.165	2.211	1.203	2.068	0.869	44.32%
BLK	(S)	0.000	0.000	0.000	0.000	0.000	0.000	0.000	0.00%
CPL	(S)	0.868	0.594	0.363	0.743	0.572	0.694	1.091	55.68%
PPT	(B)	0.000	0.000	0.000	0.000	0.000	0.000	0.000	0.00%
HBD	(B)	1.610	0.623	1.521	1.699	1.692	1.349	1.788	91.27%
BLK	(B)	0.000	0.000	0.000	0.000	0.000	0.000	0.000	0.00%
CPL	(B)	0.996	1.972	3.007	1.256	0.083	1.413	0.171	8.73%
		Sell & Buy Orders Traded per Price Type							(%)
PPT	(S)	0	0	0	0	0	0	0	0.00%
HBD	(S)	333	306	557	259	254	284	145	100.00%
BLK	(S)	0	0	0	0	0	0	0	0.00%
PPT	(B)	0	0	0	0	0	0	0	0.00%
HBD	(B)	428	344	505	425	356	355	719	100.00%
BLK	(B)	0	0	0	0	0	0	0	0.00%

- MCP** Market Clearing Price (€/MWh)
- PPT** Priority Price-Taking
- HBD** Hybrid
- BLK** Block
- CPL** Market Coupling Flow

Trade's Volume Mix

	Sell - MWh	Buy - MWh	
Lignite (0.0%)	0	0	(0.0%)
Crete Conv. (0.0%)	0	0	(0.0%)
Gas (24.4%)	477	0	(0.0%)
Hydro (0.0%)	0	0	(0.0%)
Imports (55.7%)	1,091		
RES (17.0%)	332	894	(45.6%)
Crete RES (0.0%)	0	0	(0.0%)
BESS (0.3%)	7	35	(1.8%)
HV Load (0.4%)	9	3	(0.1%)
MV Load (1.6%)	32	297	(15.2%)
LV Load (0.6%)	12	559	(28.6%)
Crete Load (0.0%)	0	0	(0.0%)
Pumping (0.0%)	0	0	(0.0%)
Exports		171	(8.7%)
Sys.Losses (0.0%)	0	0	(0.0%)
D/R Load (0.0%)	0	0	(0.0%)

