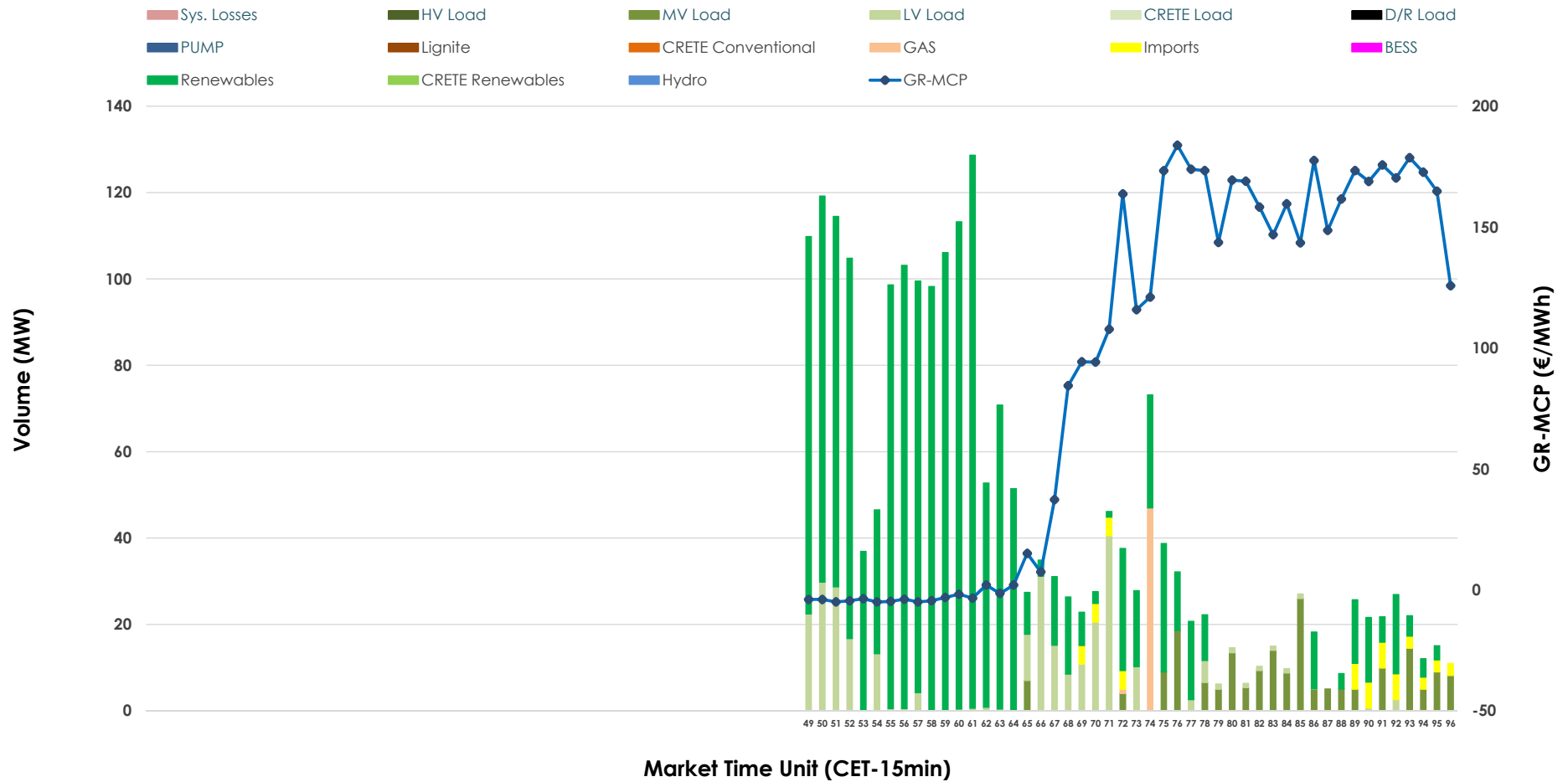


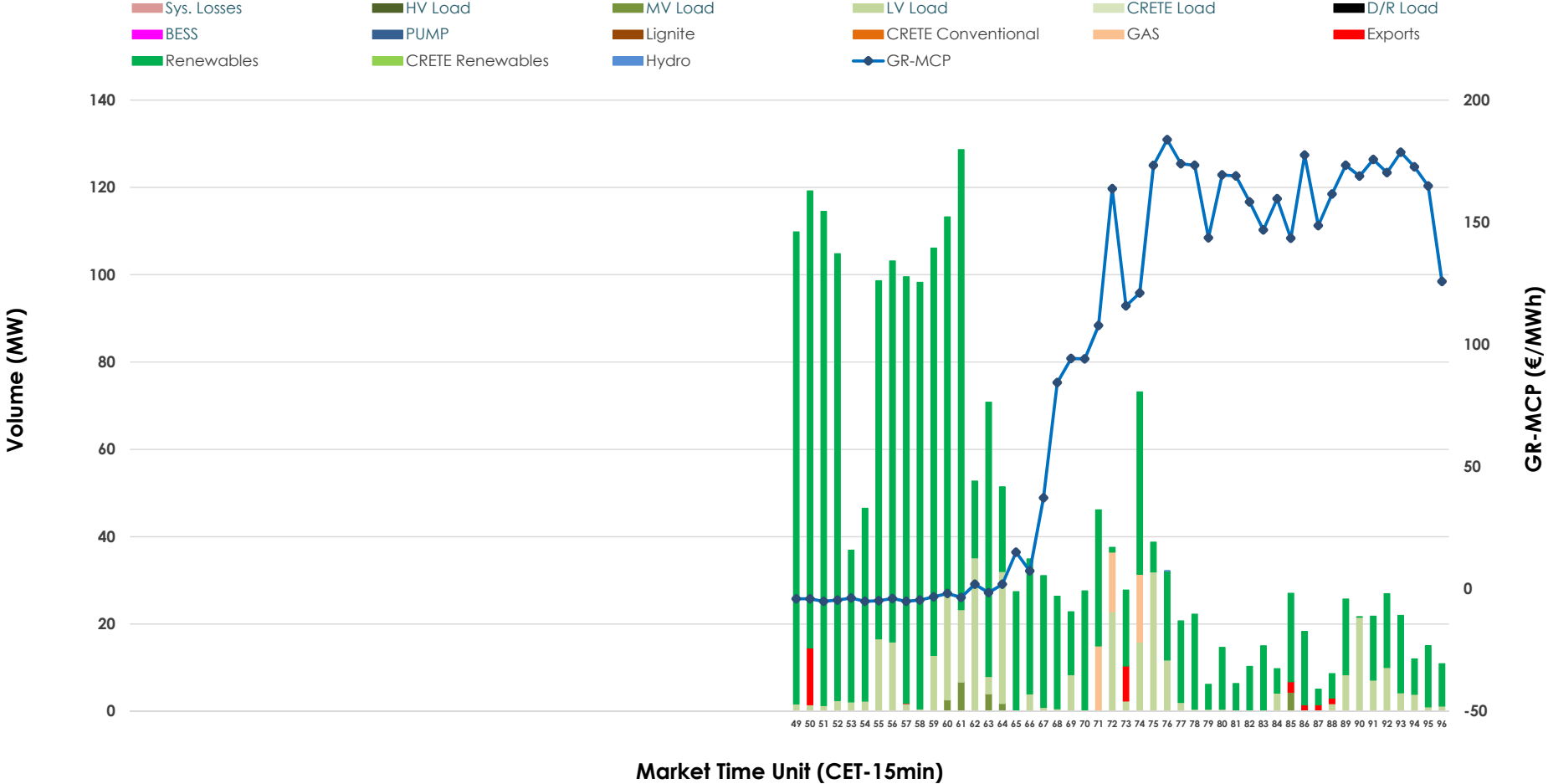


IDA '3' Market Outlook

09.05.2026 IDA '3' Market - Sell



09.05.2026 IDA '3' Market - Buy



GR Bidding Zone Weekly Figures

Delivery Day	03.05	04.05	05.05	06.05	07.05	08.05	09.05
	👇 -1%	👆 80%	👇 -5%	👇 -12%	👆 22%	👇 -3%	👇 -24%
Avg.MCP (€/MWh)	68.12	122.88	116.60	102.41	124.57	120.81	91.75
Max.MCP (€/MWh)	167.98	306.49	295.47	203.55	174.56	163.91	183.81
Min.MCP (€/MWh)	-16.76	-16.16	-5.71	-8.92	100.57	70.07	-5.00
	👉 0%	👇 -8%	👇 -54%	👆 56%	👆 54%	👇 -43%	👇 -21%
Tot.Vol(GWh)	2.40	2.21	1.01	1.58	2.43	1.39	1.10

Trades by Order Type

Delivery Day		03.05	04.05	05.05	06.05	07.05	08.05	09.05	
Ord Price Type		Sell & Buy Trades in (GWh) per Price Type							(%)
PPT	(S)	0.000	0.000	0.000	0.000	0.000	0.000	0.000	0.00%
HBD	(S)	1.114	0.625	0.401	0.529	0.750	0.592	0.537	97.62%
BLK	(S)	0.000	0.000	0.000	0.000	0.000	0.000	0.000	0.00%
CPL	(S)	0.086	0.483	0.106	0.261	0.465	0.103	0.013	2.38%
PPT	(B)	0.000	0.000	0.000	0.000	0.000	0.000	0.000	0.00%
HBD	(B)	0.667	1.107	0.460	0.761	0.929	0.466	0.543	98.75%
BLK	(B)	0.000	0.000	0.000	0.000	0.000	0.000	0.000	0.00%
CPL	(B)	0.534	0.000	0.047	0.029	0.286	0.229	0.007	1.25%
		Sell & Buy Orders Traded per Price Type							(%)
PPT	(S)	0	0	0	0	0	0	0	0.00%
HBD	(S)	149	192	115	100	163	164	105	100.00%
BLK	(S)	0	0	0	0	0	0	0	0.00%
PPT	(B)	0	0	0	0	0	0	0	0.00%
HBD	(B)	94	179	211	154	223	198	261	100.00%
BLK	(B)	0	0	0	0	0	0	0	0.00%

- MCP** Market Clearing Price (€/MWh)
- PPT** Priority Price-Taking
- HBD** Hybrid
- BLK** Block
- CPL** Market Coupling Flow

Trade's Volume Mix

		Sell - MWh	Buy - MWh	
Lignite	(0.0%)	0	0	(0.0%)
Crete Conv.	(0.0%)	0	0	(0.0%)
Gas	(2.2%)	12	11	(2.0%)
Hydro	(0.0%)	0	0	(0.0%)
Imports	(2.4%)	13		
RES	(73.7%)	405	443	(80.6%)
Crete RES	(0.0%)	0	0	(0.0%)
BESS	(0.0%)	0	0	(0.0%)
HV Load	(0.0%)	0	0	(0.0%)
MV Load	(8.8%)	48	5	(0.9%)
LV Load	(12.9%)	71	84	(15.2%)
Crete Load	(0.0%)	0	0	(0.0%)
Pumping	(0.0%)	0	0	(0.0%)
Exports			7	(1.2%)
Sys.Losses	(0.0%)	0	0	(0.0%)
D/R Load	(0.0%)	0	0	(0.0%)

