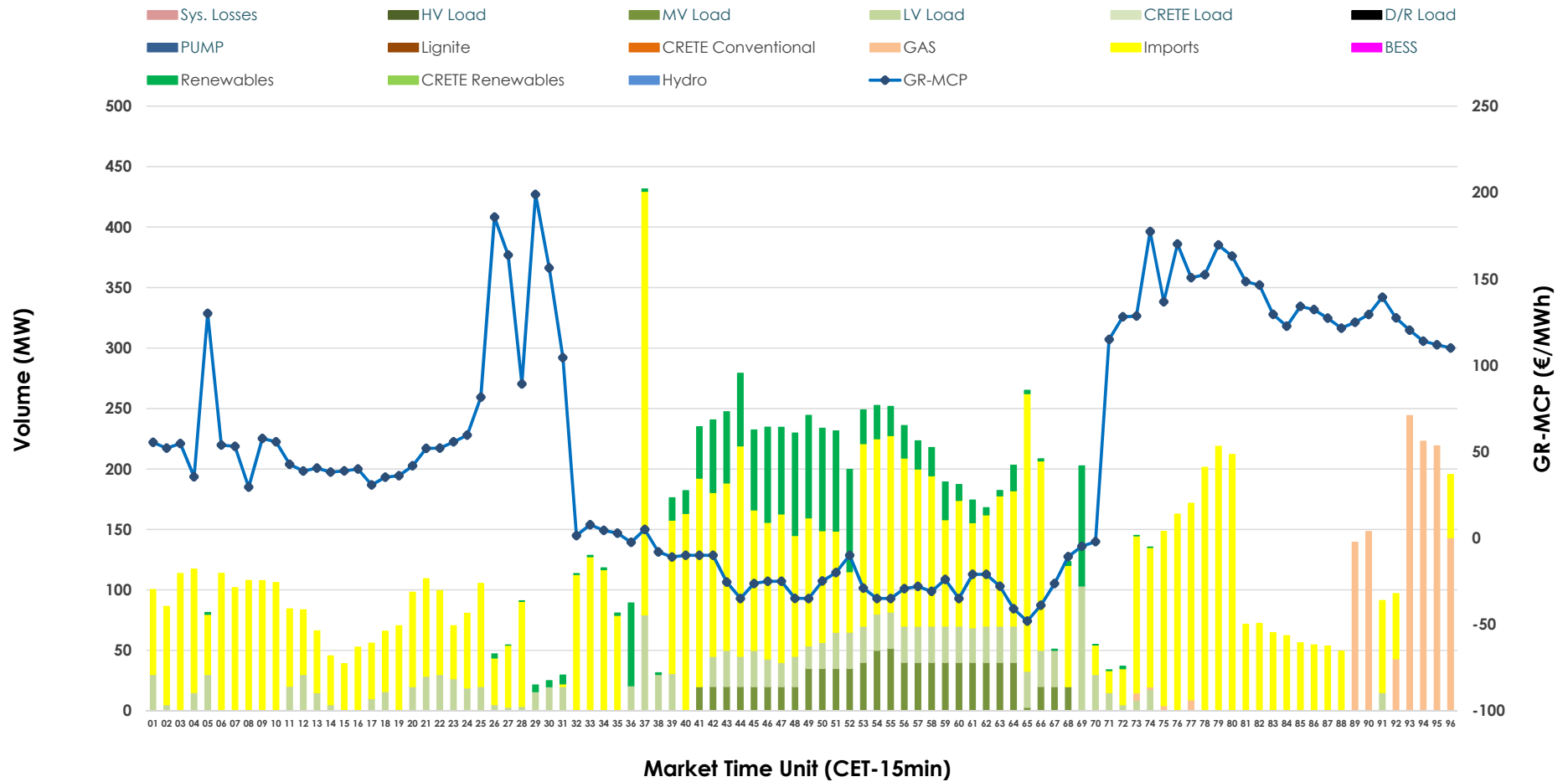


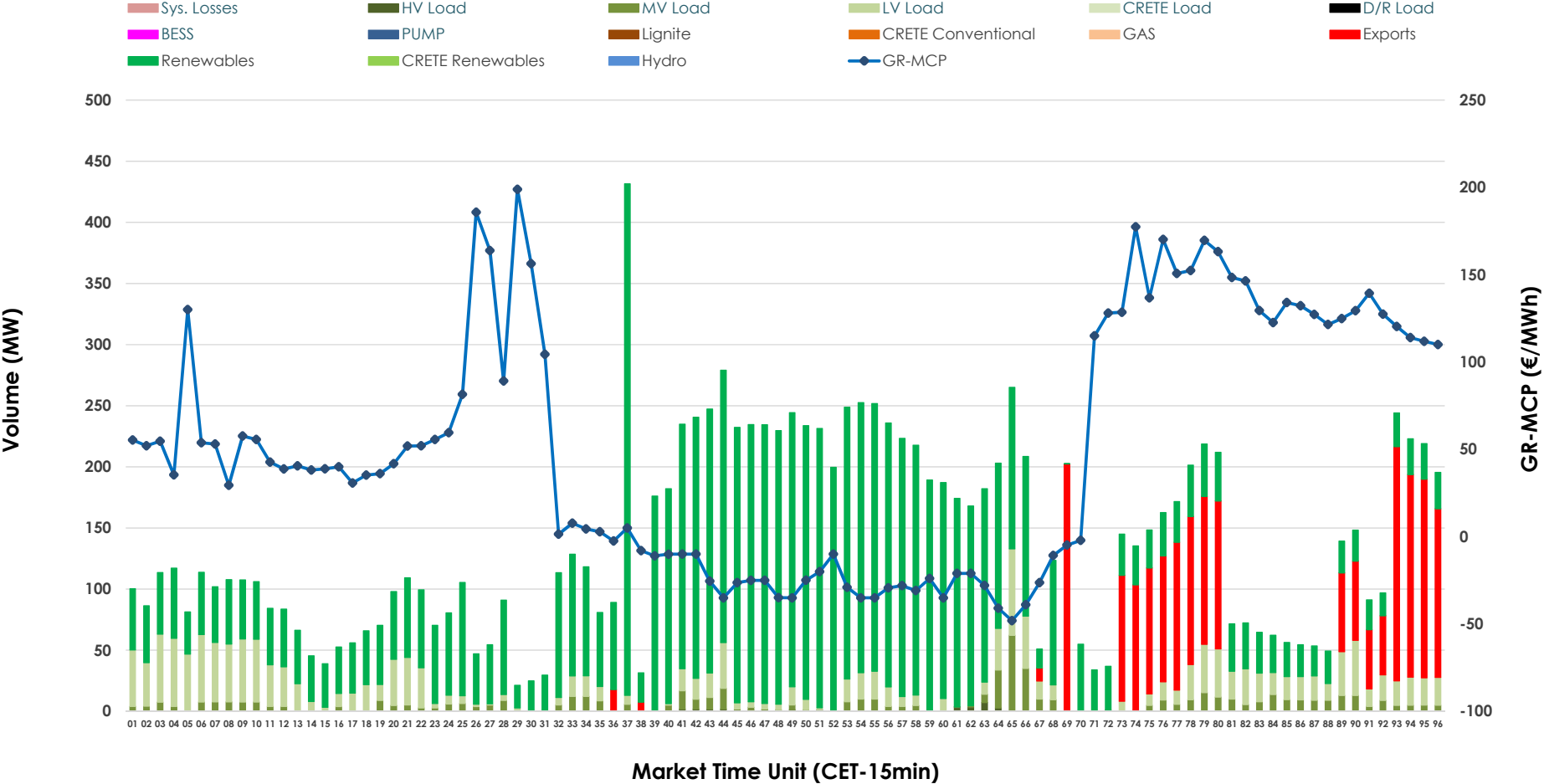


IDA '2' Market Outlook

06.04.2026 IDA '2' Market - Sell



06.04.2026 IDA '2' Market - Buy



GR Bidding Zone Weekly Figures

Delivery Day	31.03	01.04	02.04	03.04	04.04	05.04	06.04
	↗ 18%	↗ 11%	↘ -11%	↘ -4%	↘ -52%	↘ -69%	↗ 162%
Avg.MCP (€/MWh)	135.71	150.68	134.81	129.15	62.39	19.53	51.16
Max.MCP (€/MWh)	223.43	227.84	207.31	218.30	150.46	113.90	198.89
Min.MCP (€/MWh)	84.06	103.20	94.56	36.29	-2.10	-50.56	-48.10
	↗ 37%	↗ 54%	↗ 12%	↘ -23%	↘ -45%	↗ 36%	↗ 27%
Tot.Vol(GWh)	5.26	8.13	9.11	7.02	3.87	5.28	6.68

Trades by Order Type

Delivery Day		31.03	01.04	02.04	03.04	04.04	05.04	06.04	
Ord Price Type		Sell & Buy Trades in (GWh) per Price Type							(%)
PPT	(S)	0.000	0.000	0.000	0.000	0.000	0.000	0.000	0.00%
HBD	(S)	2.216	2.487	1.846	1.233	1.081	1.962	1.218	36.45%
BLK	(S)	0.000	0.000	0.000	0.000	0.000	0.000	0.000	0.00%
CPL	(S)	0.416	1.580	2.711	2.278	0.854	0.676	2.124	63.55%
PPT	(B)	0.000	0.000	0.000	0.000	0.000	0.000	0.000	0.00%
HBD	(B)	1.028	2.032	1.944	1.159	0.856	2.313	2.837	84.90%
BLK	(B)	0.000	0.000	0.000	0.000	0.000	0.000	0.000	0.00%
CPL	(B)	1.605	2.034	2.613	2.352	1.079	0.324	0.505	15.10%
		Sell & Buy Orders Traded per Price Type							(%)
PPT	(S)	0	0	0	0	0	0	0	0.00%
HBD	(S)	443	274	398	389	241	399	262	100.00%
BLK	(S)	0	0	0	0	0	0	0	0.00%
PPT	(B)	0	0	0	0	0	0	0	0.00%
HBD	(B)	587	571	409	404	405	430	634	100.00%
BLK	(B)	0	0	0	0	0	0	0	0.00%

- MCP** Market Clearing Price (€/MWh)
- PPT** Priority Price-Taking
- HBD** Hybrid
- BLK** Block
- CPL** Market Coupling Flow

Trade's Volume Mix

	Sell - MWh	Buy - MWh	
Lignite (0.0%)	0	0	(0.0%)
Crete Conv. (0.0%)	0	0	(0.0%)
Gas (8.8%)	295	0	(0.0%)
Hydro (0.0%)	0	0	(0.0%)
Imports (63.5%)	2,124		
RES (10.1%)	339	2,223	(66.5%)
Crete RES (0.0%)	0	0	(0.0%)
BESS (0.0%)	0	0	(0.0%)
HV Load (0.0%)	0	7	(0.2%)
MV Load (6.5%)	216	156	(4.7%)
LV Load (11.0%)	368	451	(13.5%)
Crete Load (0.0%)	0	0	(0.0%)
Pumping (0.0%)	0	0	(0.0%)
Exports		505	(15.1%)
Sys.Losses (0.0%)	0	0	(0.0%)
D/R Load (0.0%)	0	0	(0.0%)

