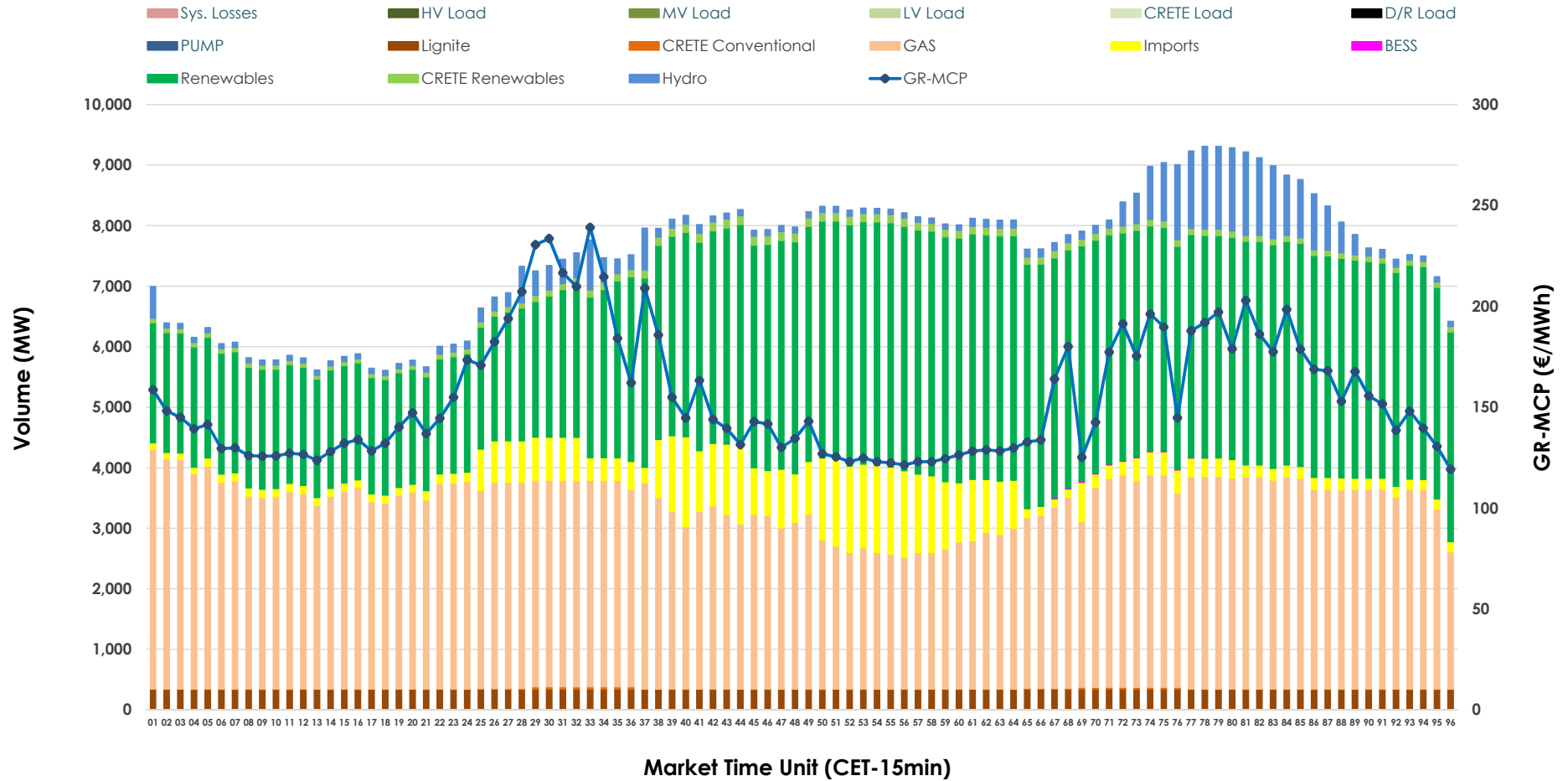


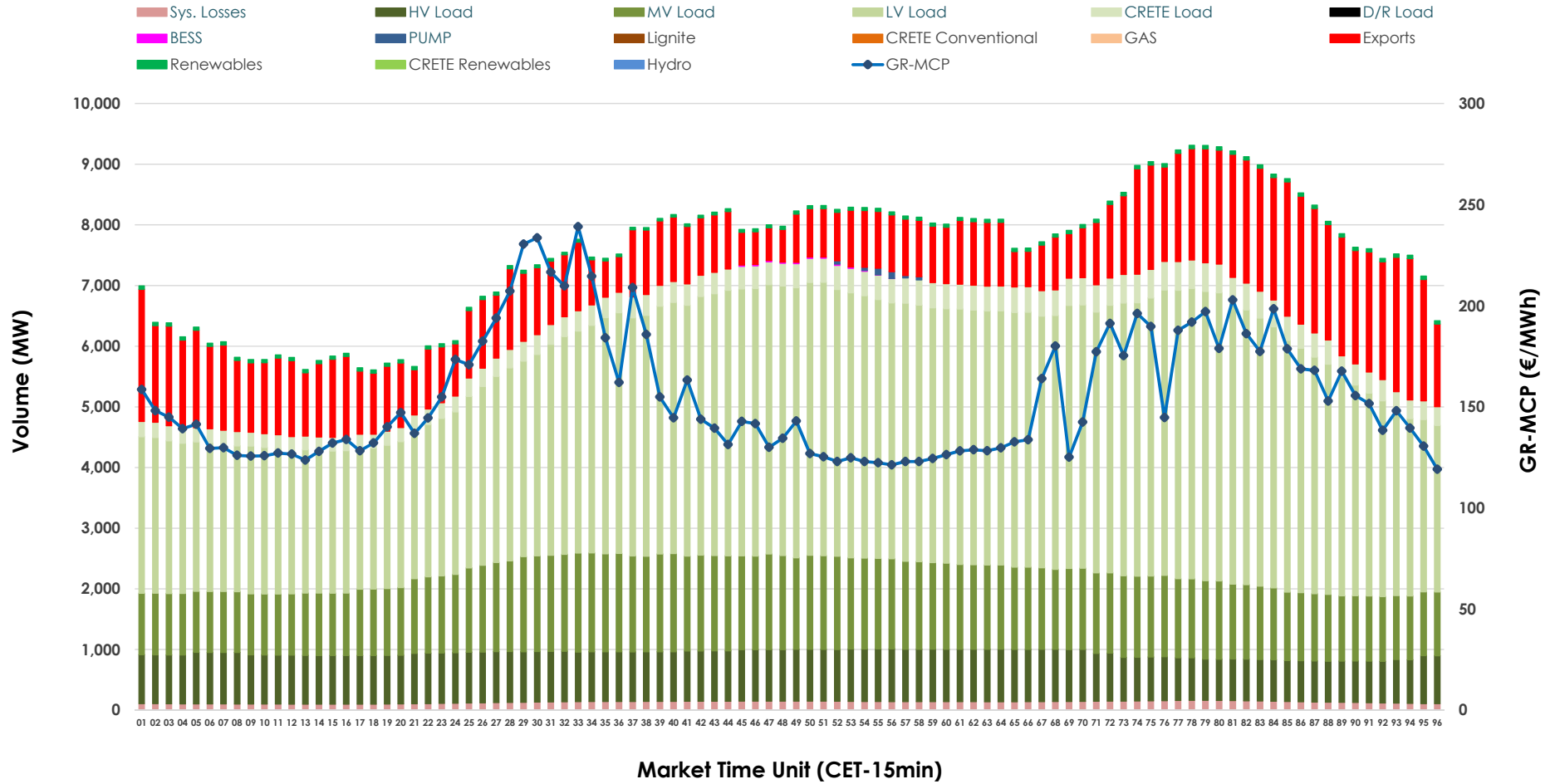


Day-Ahead Market Outlook

01.04.2026 Day-Ahead Market - Sell



01.04.2026 Day-Ahead Market - Buy



GR Bidding Zone Weekly Figures

Delivery Day	26.03	27.03	28.03	29.03	30.03	31.03	01.04
	↗ 6%	↗ 14%	↘ -12%	↘ -6%	↗ 50%	↗ 13%	↗ 16%
Avg.MCP (€/MWh)	83.46	94.87	83.88	78.67	118.01	133.84	154.99
Max.MCP (€/MWh)	175.68	153.06	161.79	159.68	223.00	218.54	239.12
Min.MCP (€/MWh)	0.00	0.01	5.02	0.00	0.02	91.97	119.18
	↘ -3%	↗ 6%	↘ -14%	↘ -6%	↗ 10%	↗ 3%	↗ 3%
Tot.Vol(GWh)	367.18	387.51	331.32	310.02	341.69	350.68	361.49

Trades by Order Type

Delivery Day		26.03	27.03	28.03	29.03	30.03	31.03	01.04	
Ord Price Type		Sell & Buy Trades in (GWh) per Price Type							(%)
PPT	(S)	67.792	78.719	58.210	53.869	52.119	53.482	56.513	31.27%
HBD	(S)	75.969	84.049	62.984	60.502	74.533	74.499	74.726	41.34%
BLK	(S)	31.782	28.633	30.164	21.936	30.517	40.412	41.726	23.09%
CPL	(S)	8.049	2.353	14.305	18.705	13.675	6.945	7.778	4.30%
PPT	(B)	13.255	15.198	13.590	14.311	13.444	14.177	14.771	8.17%
HBD	(B)	146.733	148.574	141.361	124.133	136.551	141.287	148.563	82.20%
BLK	(B)	0.000	0.000	0.000	0.000	0.000	0.000	0.000	0.00%
CPL	(B)	23.605	29.982	10.712	16.567	20.849	19.875	17.409	9.63%
		Sell & Buy Orders Traded per Price Type							(%)
PPT	(S)	1755	1770	1745	1557	1546	1555	1558	33.58%
HBD	(S)	2787	2960	3058	2506	3107	3233	3061	65.98%
BLK	(S)	11	11	11	11	15	18	20	0.43%
PPT	(B)	2270	2269	2321	2235	2243	2259	2261	35.64%
HBD	(B)	4150	4176	4177	3949	4044	4031	4083	64.36%
BLK	(B)	0	0	0	0	0	0	0	0.00%

- MCP** Market Clearing Price (€/MWh)
- PPT** Priority Price-Taking
- HBD** Hybrid
- BLK** Block
- CPL** Market Coupling Flow

Trade's Volume Mix

		Sell - MWh	Buy - MWh	
Lignite	(4.5%)	8,160	0	(0.0%)
Crete Conv.	(0.1%)	160	0	(0.0%)
Gas	(41.4%)	74,870	0	(0.0%)
Hydro	(4.2%)	7,546	0	(0.0%)
Imports	(6.7%)	12,183		
RES	(41.6%)	75,247	1,221	(0.7%)
Crete RES	(1.4%)	2,533	0	(0.0%)
BESS	(0.0%)	44	52	(0.0%)
HV Load	(0.0%)	0	19,237	(10.6%)
MV Load	(0.0%)	0	31,418	(17.4%)
LV Load	(0.0%)	0	87,343	(48.3%)
Crete Load	(0.0%)	0	8,404	(4.6%)
Pumping	(0.0%)	0	105	(0.1%)
Exports			29,776	(16.5%)
Sys.Losses	(0.0%)	0	3,188	(1.8%)
D/R Load	(0.0%)	0	0	(0.0%)

