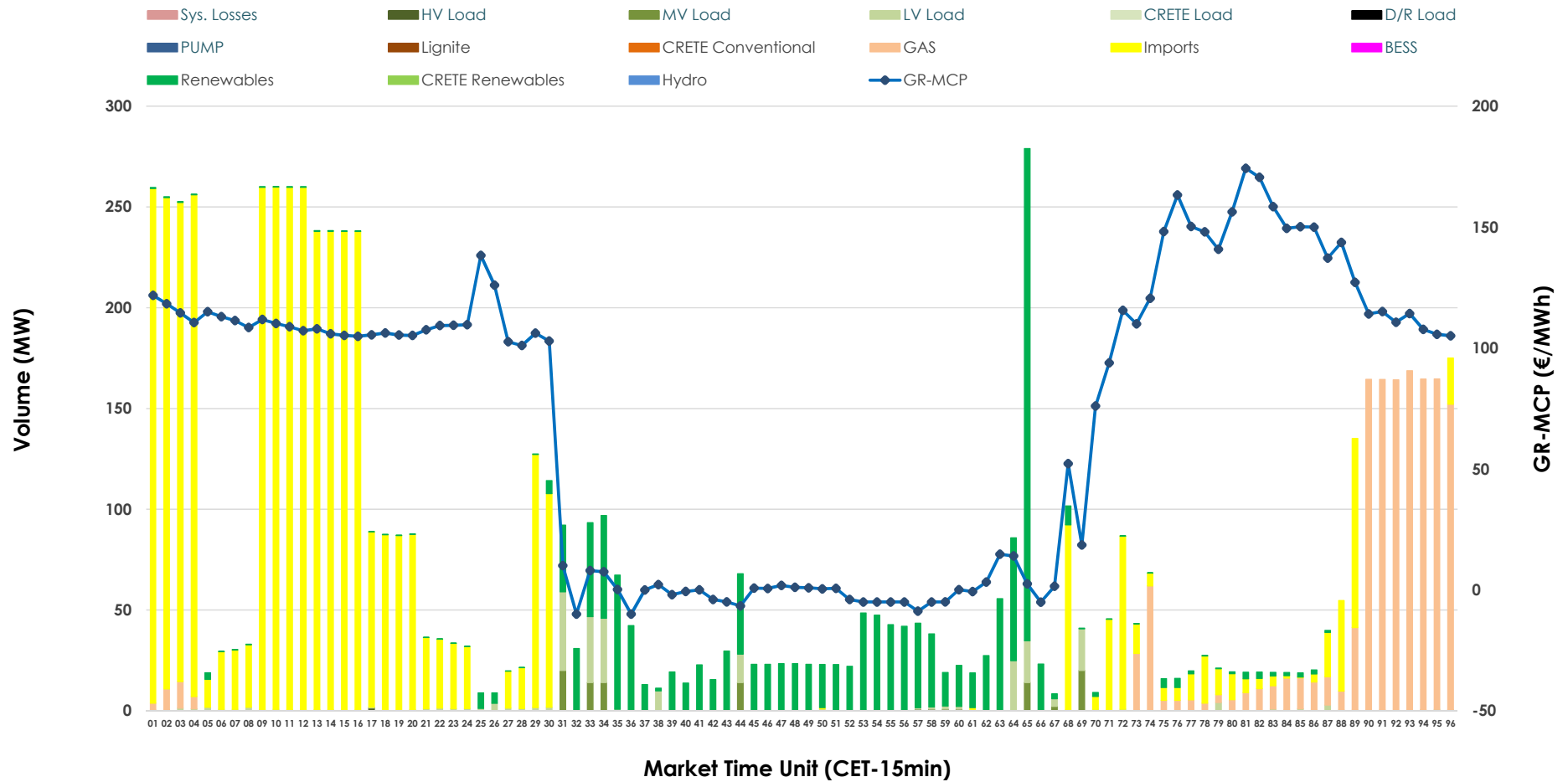


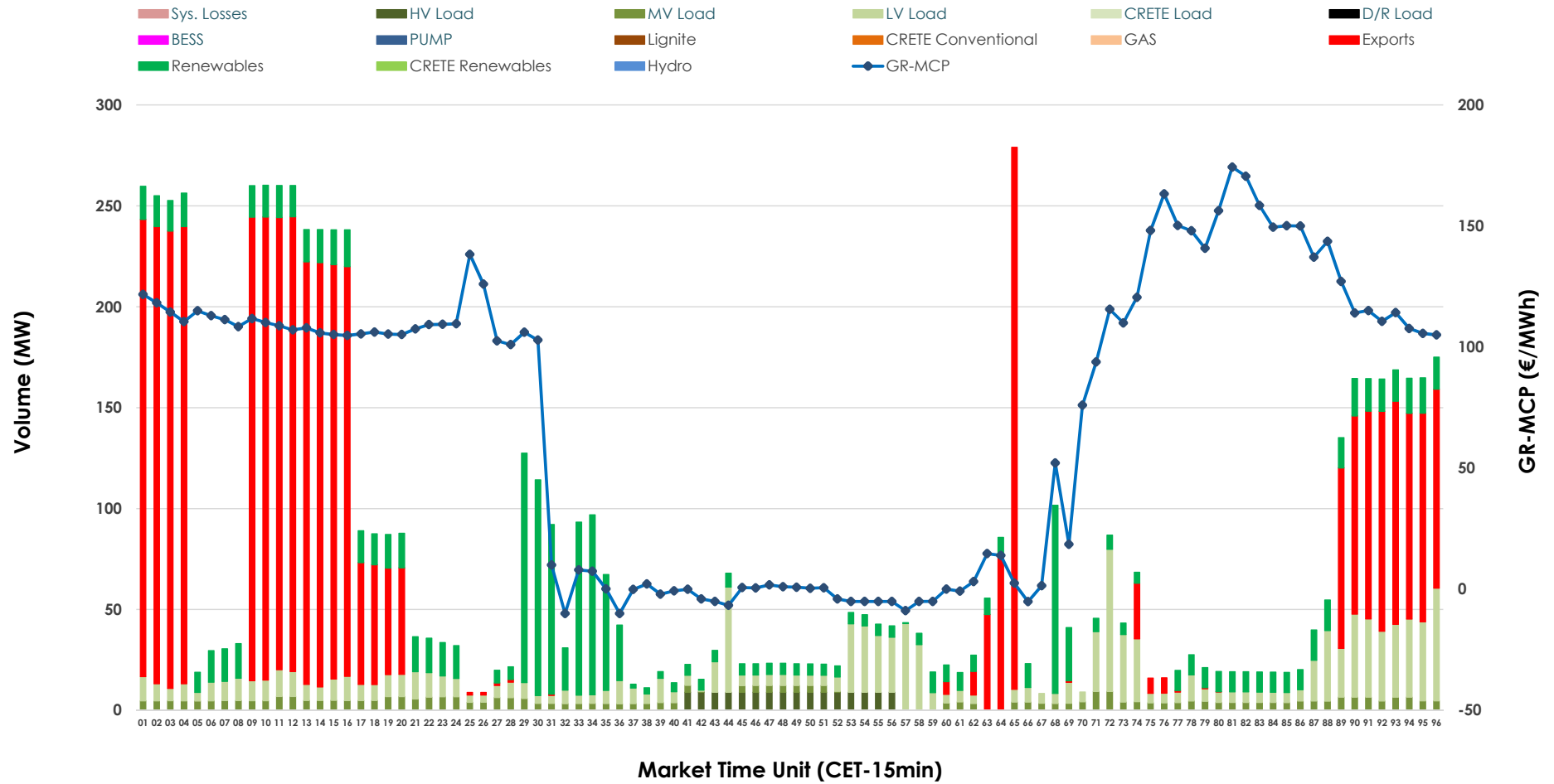


# IDA '1' Market Outlook

19.04.2026 IDA '1' Market - Sell



### 19.04.2026 IDA '1' Market - Buy



### GR Bidding Zone Weekly Figures

Delivery Day	13.04	14.04	15.04	16.04	17.04	18.04	19.04
	↗ 10%	↕ 50%	↘ -7%			↘ -14%	↗ 13%
<b>Avg.MCP (€/MWh)</b>	88.91	133.10	124.20	N/M	74.62	63.84	72.08
<b>Max.MCP (€/MWh)</b>	166.41	266.00	172.06	N/M	175.68	148.61	174.32
<b>Min.MCP (€/MWh)</b>	-12.71	14.48	65.70	N/M	-18.65	-22.01	-10.00
	↘ -30%	↗ -1%				↗ 13%	↘ -3%
<b>Tot.Vol(GWh)</b>	3.28	3.26	N/M	N/M	3.45	3.88	3.77

### Trades by Order Type

Delivery Day		13.04	14.04	15.04	16.04	17.04	18.04	19.04	
<b>Ord Price Type</b>		<b>Sell &amp; Buy Trades in (GWh) per Price Type</b>							<b>(%)</b>
<b>PPT</b>	(S)	0.000	0.000	0.000		0.000	0.000	0.000	0.00%
<b>HBD</b>	(S)	0.819	1.136	0.000		1.172	1.017	0.797	42.22%
<b>BLK</b>	(S)	0.000	0.000	0.000		0.000	0.000	0.000	0.00%
<b>CPL</b>	(S)	0.822	0.492	0.000		0.554	0.925	1.090	57.78%
<b>PPT</b>	(B)	0.000	0.000	0.000		0.000	0.000	0.000	0.00%
<b>HBD</b>	(B)	0.971	0.771	0.000		1.314	1.399	0.851	45.09%
<b>BLK</b>	(B)	0.000	0.000	0.000		0.000	0.000	0.000	0.00%
<b>CPL</b>	(B)	0.670	0.858	0.000		0.411	0.543	1.036	54.91%
		<b>Sell &amp; Buy Orders Traded per Price Type</b>							<b>(%)</b>
<b>PPT</b>	(S)	0	0	0		0	0	0	0.00%
<b>HBD</b>	(S)	89	127	130		211	158	173	100.00%
<b>BLK</b>	(S)	0	0	0		0	0	0	0.00%
<b>PPT</b>	(B)	0	0	0		0	0	0	0.00%
<b>HBD</b>	(B)	567	501	793		634	880	512	100.00%
<b>BLK</b>	(B)	0	0	0		0	0	0	0.00%

- MCP** Market Clearing Price (€/MWh)
- PPT** Priority Price-Taking
- HBD** Hybrid
- BLK** Block
- CPL** Market Coupling Flow

### Trade's Volume Mix

	Sell - MWh	Buy - MWh	
<b>Lignite</b> (0.0%)	0	0	(0.0%)
<b>Crete Conv.</b> (0.0%)	0	0	(0.0%)
<b>Gas</b> (19.0%)	358	0	(0.0%)
<b>Hydro</b> (0.0%)	0	0	(0.0%)
<b>Imports</b> (57.8%)	1,090		
<b>RES</b> (18.5%)	350	390	(20.7%)
<b>Crete RES</b> (0.0%)	0	0	(0.0%)
<b>BESS</b> (0.0%)	0	0	(0.0%)
<b>HV Load</b> (0.1%)	1	36	(1.9%)
<b>MV Load</b> (1.3%)	25	97	(5.1%)
<b>LV Load</b> (3.3%)	63	328	(17.4%)
<b>Crete Load</b> (0.0%)	0	0	(0.0%)
<b>Pumping</b> (0.0%)	0	0	(0.0%)
<b>Exports</b>		1,036	(54.9%)
<b>Sys.Losses</b> (0.0%)	0	0	(0.0%)
<b>D/R Load</b> (0.0%)	0	0	(0.0%)

