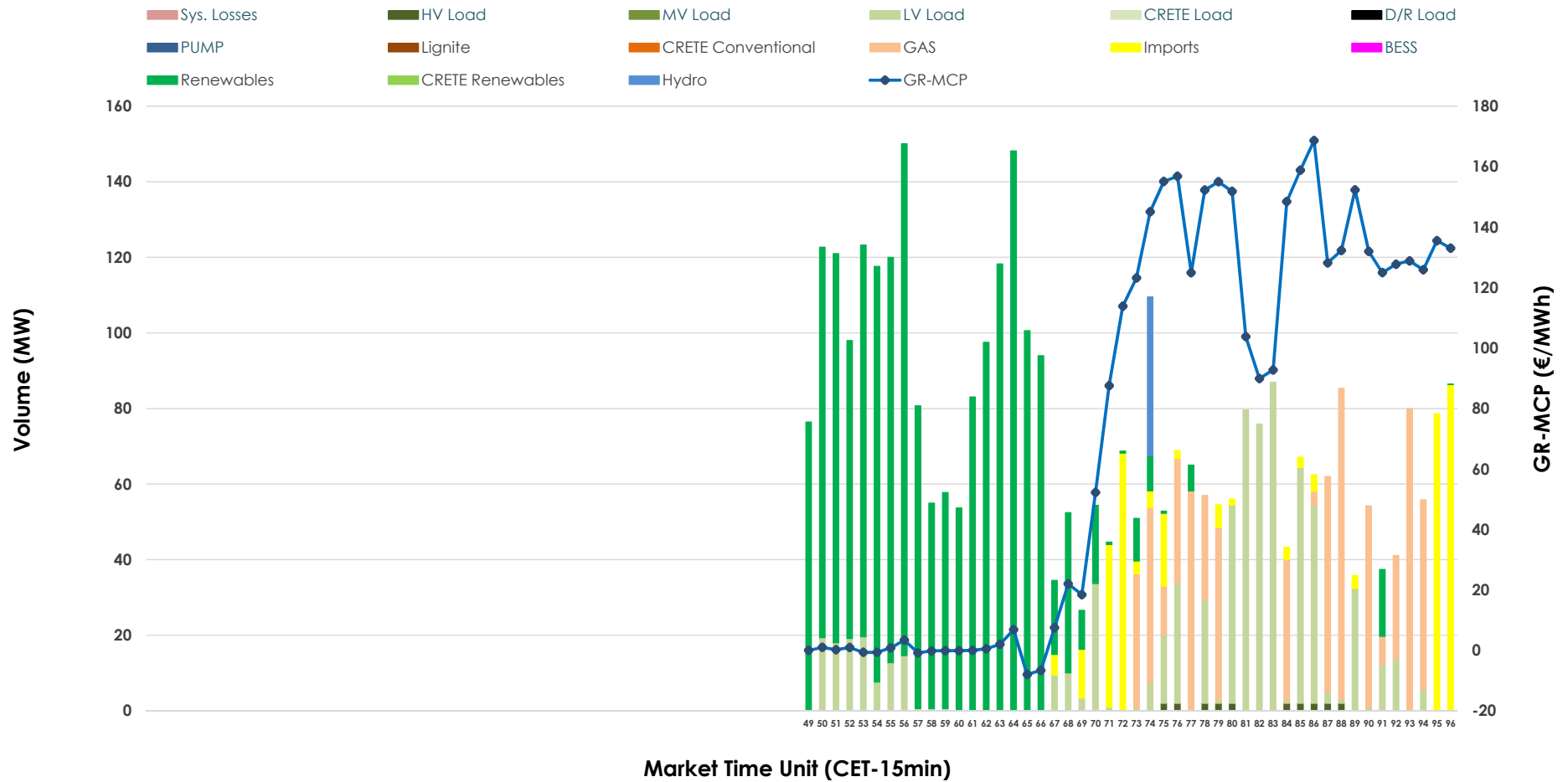


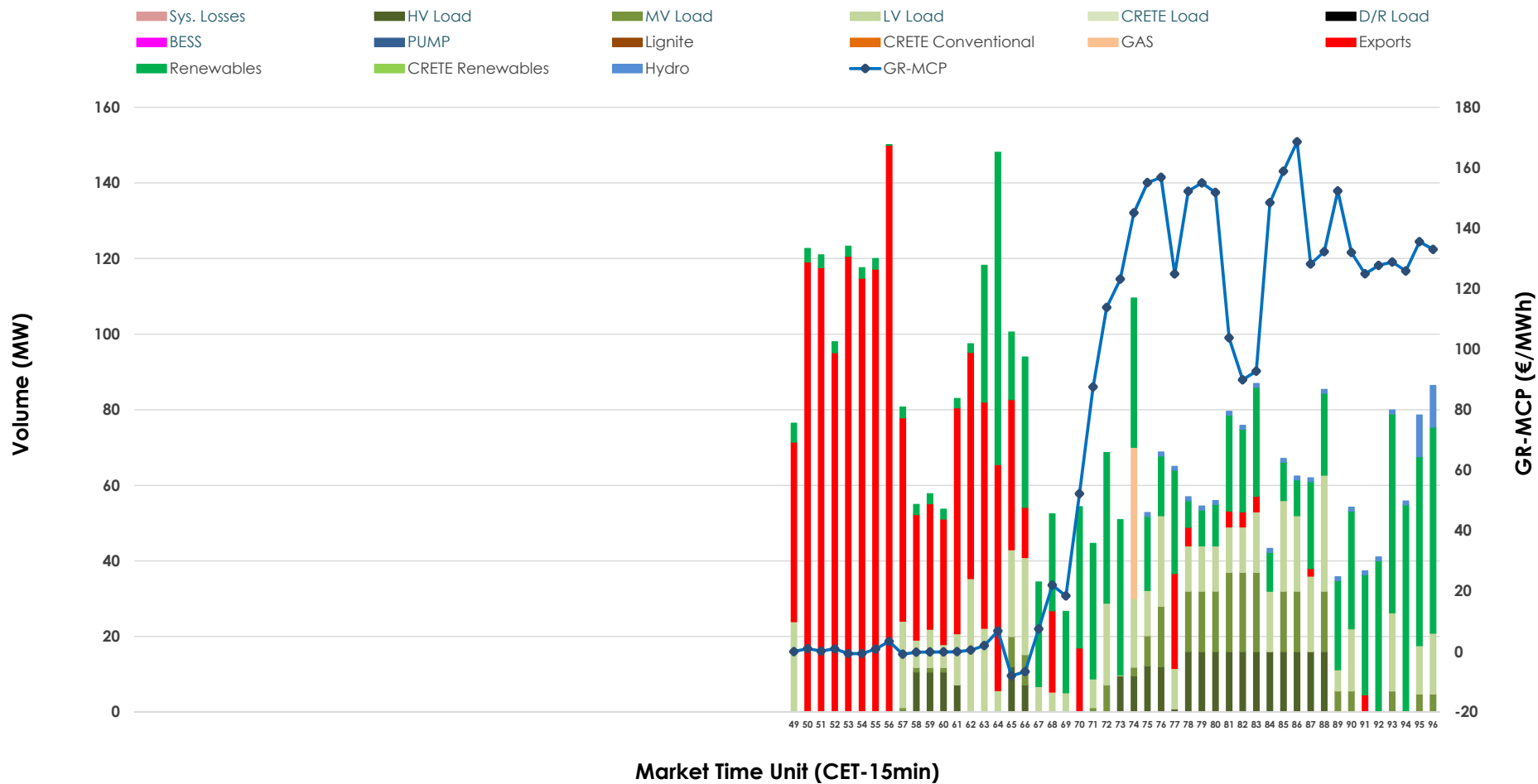


IDA '3' Market Outlook

30.05.2026 IDA '3' Market - Sell



30.05.2026 IDA '3' Market - Buy



GR Bidding Zone Weekly Figures

Delivery Day	24.05	25.05	26.05	27.05	28.05	29.05	30.05
	👇 -13%	👆 12%	👆 8%	👆 47%	👇 -23%	👇 -18%	👆 4%
Avg.MCP (€/MWh)	62.70	70.53	76.50	112.62	86.25	70.87	73.90
Max.MCP (€/MWh)	154.90	167.51	190.92	269.90	205.07	152.55	168.60
Min.MCP (€/MWh)	-16.98	-14.01	-9.34	-8.29	-6.67	-16.74	-8.00
	👇 -15%	👆 103%	👆 51%	👇 -60%	👆 48%	👇 -39%	👆 8%
Tot.Vol(GWh)	1.53	3.11	4.72	1.87	2.77	1.69	1.82

Trades by Order Type

Delivery Day		24.05	25.05	26.05	27.05	28.05	29.05	30.05	
Ord Price Type		Sell & Buy Trades in (GWh) per Price Type							(%)
PPT	(S)	0.000	0.000	0.000	0.000	0.000	0.000	0.000	0.00%
HBD	(S)	0.616	1.038	2.324	0.427	0.934	0.847	0.825	90.53%
BLK	(S)	0.000	0.000	0.000	0.000	0.000	0.000	0.000	0.00%
CPL	(S)	0.150	0.519	0.034	0.509	0.449	0.000	0.086	9.47%
PPT	(B)	0.000	0.000	0.000	0.000	0.000	0.000	0.000	0.00%
HBD	(B)	0.418	1.318	1.882	0.893	1.365	0.322	0.557	61.18%
BLK	(B)	0.000	0.000	0.000	0.000	0.000	0.000	0.000	0.00%
CPL	(B)	0.349	0.240	0.476	0.043	0.018	0.526	0.354	38.82%
		Sell & Buy Orders Traded per Price Type							(%)
PPT	(S)	0	0	0	0	0	0	0	0.00%
HBD	(S)	119	166	141	115	144	167	109	100.00%
BLK	(S)	0	0	0	0	0	0	0	0.00%
PPT	(B)	0	0	0	0	0	0	0	0.00%
HBD	(B)	174	309	251	285	308	203	212	100.00%
BLK	(B)	0	0	0	0	0	0	0	0.00%

- MCP** Market Clearing Price (€/MWh)
- PPT** Priority Price-Taking
- HBD** Hybrid
- BLK** Block
- CPL** Market Coupling Flow

Trade's Volume Mix

	Sell - MWh	Buy - MWh	
Lignite (0.0%)	0	0	(0.0%)
Crete Conv. (0.0%)	0	0	(0.0%)
Gas (18.0%)	164	10	(1.1%)
Hydro (1.2%)	11	11	(1.2%)
Imports (9.5%)	86		
RES (50.6%)	461	266	(29.2%)
Crete RES (0.0%)	0	0	(0.0%)
BESS (0.0%)	0	0	(0.0%)
HV Load (0.5%)	5	70	(7.6%)
MV Load (0.0%)	0	60	(6.6%)
LV Load (20.2%)	184	141	(15.5%)
Crete Load (0.0%)	0	0	(0.0%)
Pumping (0.0%)	0	0	(0.0%)
Exports		354	(38.8%)
Sys.Losses (0.0%)	0	0	(0.0%)
D/R Load (0.0%)	0	0	(0.0%)

