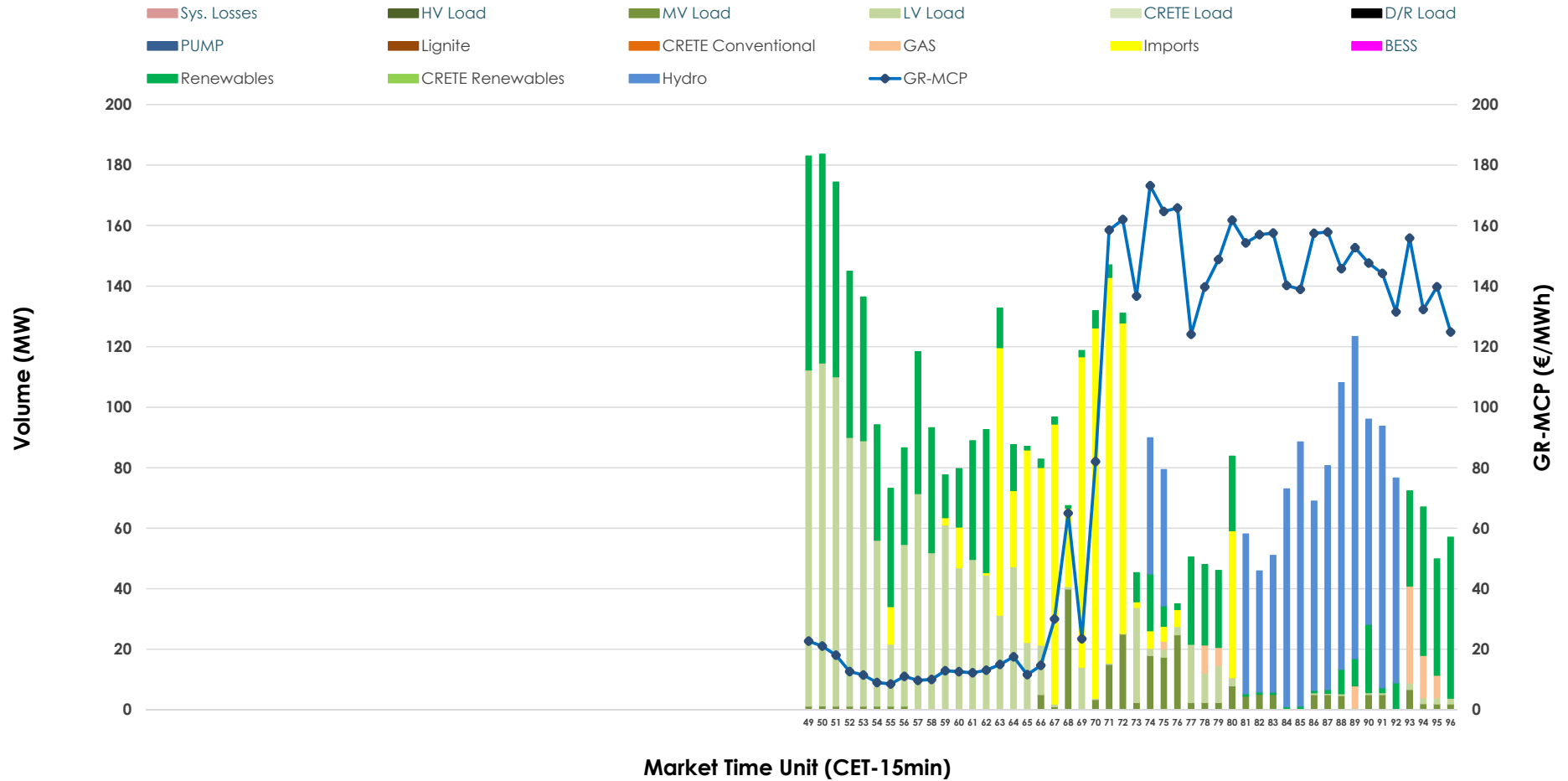


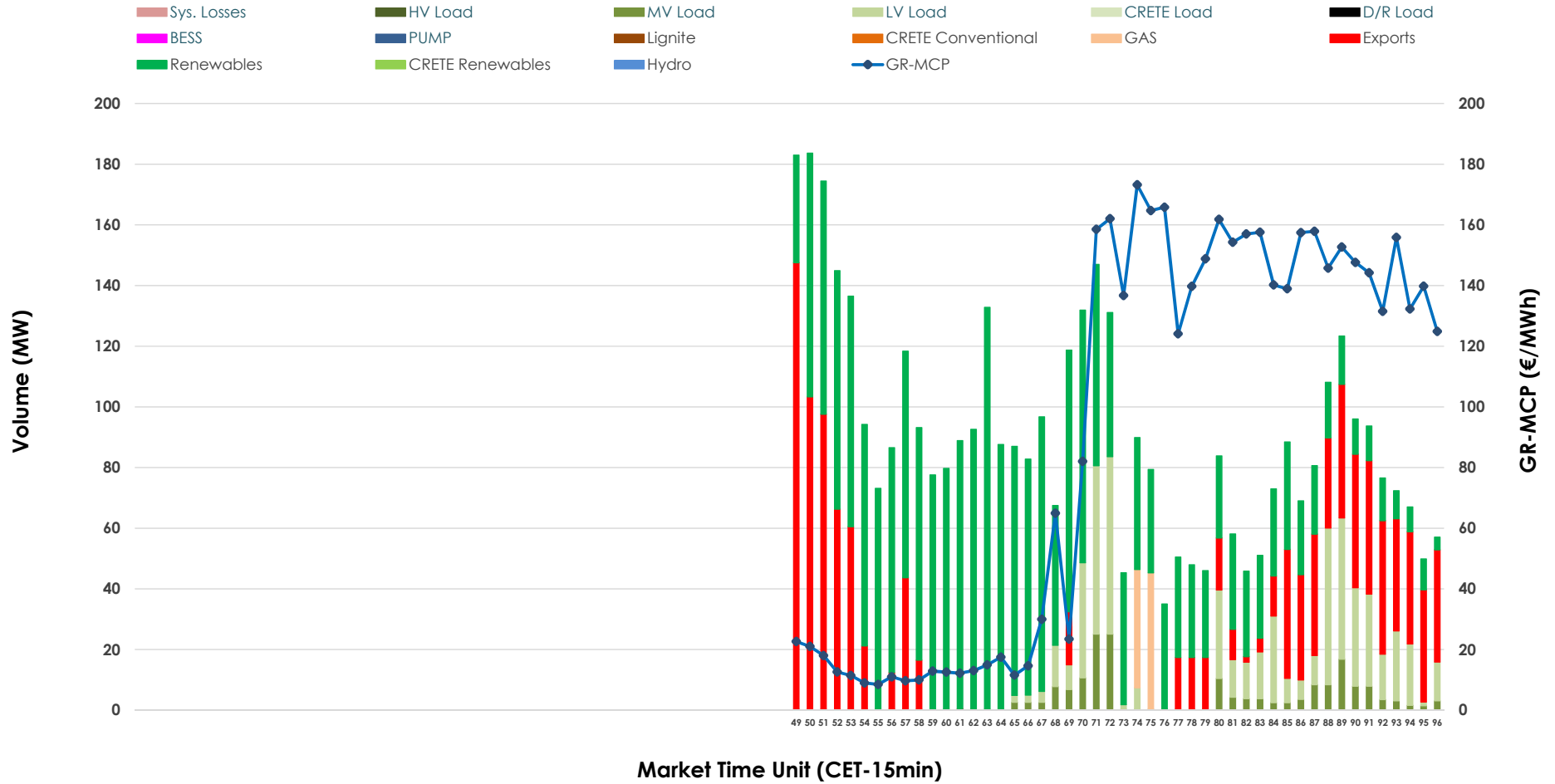


# IDA '3' Market Outlook

15.06.2026 IDA '3' Market - Sell



### 15.06.2026 IDA '3' Market - Buy



### GR Bidding Zone Weekly Figures

Delivery Day	09.06	10.06	11.06	12.06	13.06	14.06	15.06
	➔ 1%	➔ 5%	⬇️ -14%	➔ 5%	⬇️ -57%	⬆️ 43%	⬆️ 34%
<b>Avg.MCP (€/MWh)</b>	115.70	121.94	104.93	110.09	46.84	67.00	89.94
<b>Max.MCP (€/MWh)</b>	203.07	197.81	162.38	171.30	124.40	156.76	173.21
<b>Min.MCP (€/MWh)</b>	16.45	-6.35	35.10	79.76	-25.47	-8.70	8.51
	⬆️ 40%	⬇️ -13%	➔ 31%	⬇️ -57%	⬇️ -28%	⬆️ 129%	⬇️ -6%
<b>Tot.Vol(GWh)</b>	2.85	2.48	3.26	1.42	1.02	2.34	2.20

### Trades by Order Type

Delivery Day		09.06	10.06	11.06	12.06	13.06	14.06	15.06	
<b>Ord Price Type</b>		<b>Sell &amp; Buy Trades in (GWh) per Price Type</b>							<b>(%)</b>
<b>PPT</b>	(S)	0.000	0.000	0.000	0.000	0.000	0.000	0.000	0.00%
<b>HBD</b>	(S)	1.346	0.406	0.777	0.697	0.500	0.954	0.873	79.41%
<b>BLK</b>	(S)	0.000	0.000	0.000	0.000	0.000	0.000	0.000	0.00%
<b>CPL</b>	(S)	0.081	0.836	0.855	0.011	0.010	0.214	0.226	20.59%
<b>PPT</b>	(B)	0.000	0.000	0.000	0.000	0.000	0.000	0.000	0.00%
<b>HBD</b>	(B)	0.618	0.618	0.702	0.345	0.454	0.381	0.811	73.78%
<b>BLK</b>	(B)	0.000	0.000	0.000	0.000	0.000	0.000	0.000	0.00%
<b>CPL</b>	(B)	0.809	0.625	0.930	0.363	0.057	0.788	0.288	26.22%
		<b>Sell &amp; Buy Orders Traded per Price Type</b>							<b>(%)</b>
<b>PPT</b>	(S)	0	0	0	0	0	0	0	0.00%
<b>HBD</b>	(S)	237	156	168	278	214	244	271	100.00%
<b>BLK</b>	(S)	0	0	0	0	0	0	0	0.00%
<b>PPT</b>	(B)	0	0	0	0	0	0	0	0.00%
<b>HBD</b>	(B)	274	245	229	184	131	156	348	100.00%
<b>BLK</b>	(B)	0	0	0	0	0	0	0	0.00%

- MCP** Market Clearing Price (€/MWh)
- PPT** Priority Price-Taking
- HBD** Hybrid
- BLK** Block
- CPL** Market Coupling Flow

### Trade's Volume Mix

		Sell - MWh	Buy - MWh	
<b>Lignite</b>	(0.0%)	0	0	(0.0%)
<b>Crete Conv.</b>	(0.0%)	0	0	(0.0%)
<b>Gas</b>	(1.8%)	20	21	(1.9%)
<b>Hydro</b>	(21.5%)	237	0	(0.0%)
<b>Imports</b>	(20.6%)	226		
<b>RES</b>	(23.8%)	261	608	(55.3%)
<b>Crete RES</b>	(0.0%)	0	0	(0.0%)
<b>BESS</b>	(0.0%)	0	0	(0.0%)
<b>HV Load</b>	(0.0%)	0	0	(0.0%)
<b>MV Load</b>	(5.2%)	57	46	(4.2%)
<b>LV Load</b>	(27.2%)	298	136	(12.4%)
<b>Crete Load</b>	(0.0%)	0	0	(0.0%)
<b>Pumping</b>	(0.0%)	0	0	(0.0%)
<b>Exports</b>			288	(26.2%)
<b>Sys.Losses</b>	(0.0%)	0	0	(0.0%)
<b>D/R Load</b>	(0.0%)	0	0	(0.0%)

