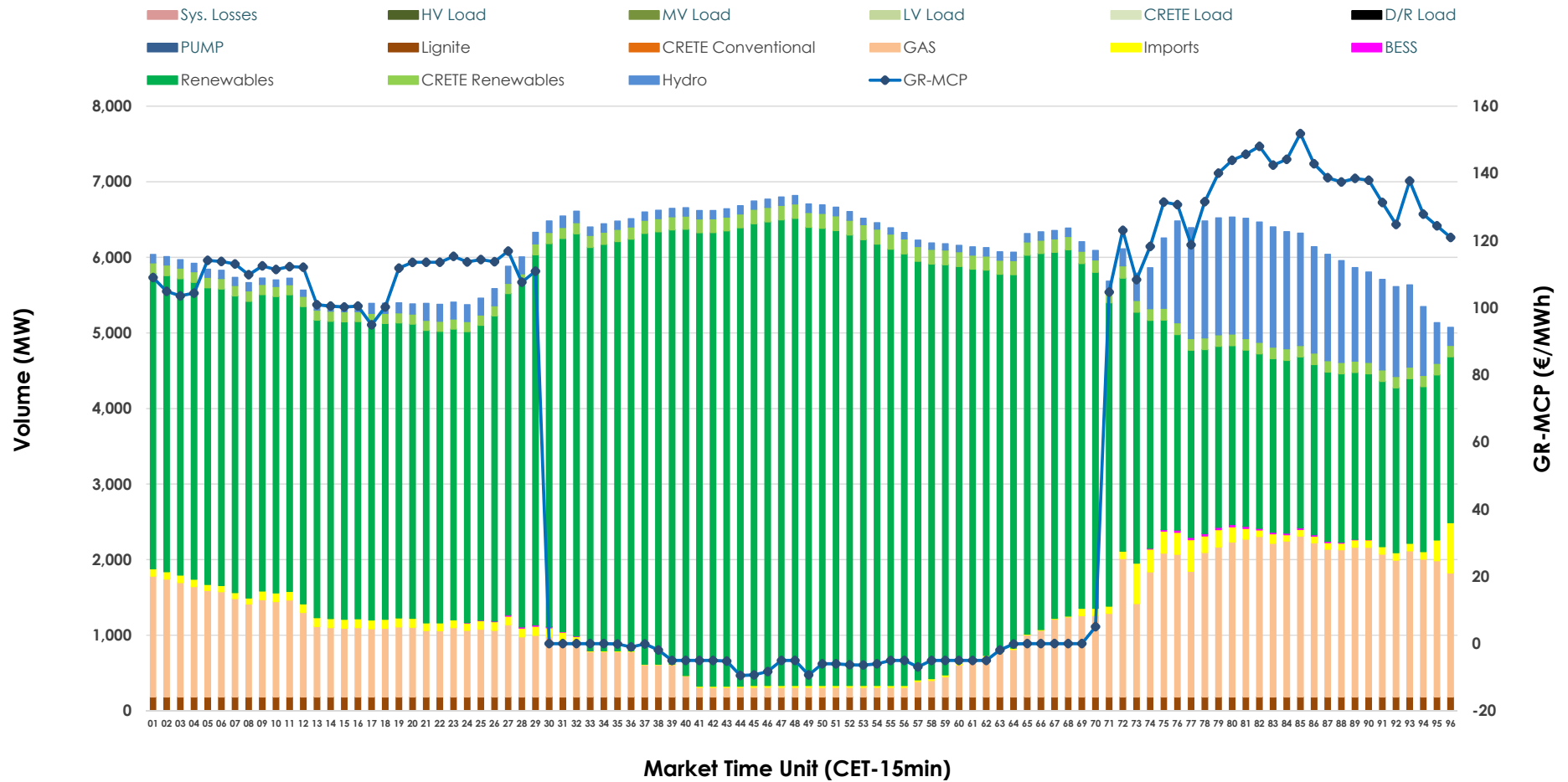


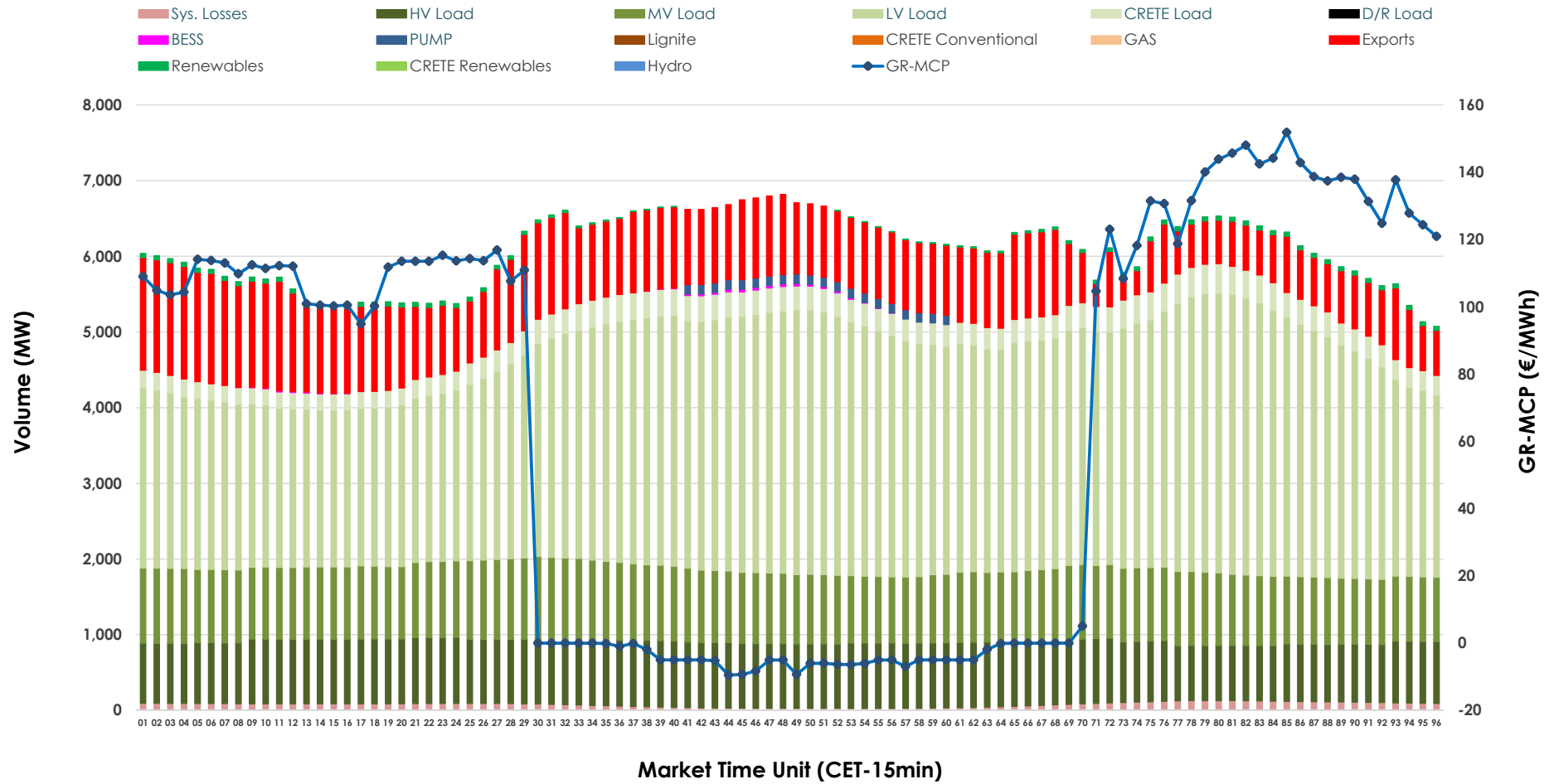


Day-Ahead Market Outlook

18.04.2026 Day-Ahead Market - Sell



18.04.2026 Day-Ahead Market - Buy



GR Bidding Zone Weekly Figures

Delivery Day	12.04	13.04	14.04	15.04	16.04	17.04	18.04
	👇 -9%	👆 13%	👆 47%	👇 -5%	👇 -27%	👇 -16%	👇 -13%
Avg.MCP (€/MWh)	79.79	90.06	132.81	125.87	91.60	77.40	67.33
Max.MCP (€/MWh)	157.05	167.43	245.16	176.29	214.54	167.98	151.85
Min.MCP (€/MWh)	-0.41	0.00	15.01	64.00	0.00	-0.10	-9.50
	👇 -4%	👆 9%	👆 17%	👆 5%	👆 6%	👇 -4%	👇 -8%
Tot.Vol(GWh)	234.70	254.95	298.65	312.79	331.04	318.07	292.47

Trades by Order Type

Delivery Day		12.04	13.04	14.04	15.04	16.04	17.04	18.04	
Ord Price Type		Sell & Buy Trades in (GWh) per Price Type							(%)
PPT	(S)	39.180	44.572	44.451	45.887	64.098	74.510	71.097	48.62%
HBD	(S)	49.183	54.680	66.771	65.234	74.728	66.668	58.837	40.23%
BLK	(S)	17.179	21.227	33.965	35.606	24.879	17.787	15.650	10.70%
CPL	(S)	11.806	6.996	4.140	9.669	1.814	0.070	0.653	0.45%
PPT	(B)	12.221	12.074	12.075	12.730	13.676	12.831	12.306	8.41%
HBD	(B)	96.846	104.111	127.172	133.448	134.083	130.557	119.439	81.67%
BLK	(B)	0.000	0.000	0.000	0.000	0.000	0.000	0.000	0.00%
CPL	(B)	8.282	11.289	10.080	10.218	17.760	15.647	14.493	9.91%
		Sell & Buy Orders Traded per Price Type							(%)
PPT	(S)	1465	1461	1495	1488	1493	1585	1502	38.61%
HBD	(S)	2576	2768	3229	3247	2815	2550	2380	61.18%
BLK	(S)	12	13	19	16	13	10	8	0.21%
PPT	(B)	2374	2349	2309	2317	2353	2363	2270	35.01%
HBD	(B)	4193	4291	4088	4131	4190	4224	4214	64.99%
BLK	(B)	0	0	0	0	0	0	0	0.00%

- MCP** Market Clearing Price (€/MWh)
- PPT** Priority Price-Taking
- HBD** Hybrid
- BLK** Block
- CPL** Market Coupling Flow

Trade's Volume Mix

	Sell - MWh	Buy - MWh	
Lignite (3.0%)	4,392	0	(0.0%)
Crete Conv. (0.0%)	0	0	(0.0%)
Gas (16.7%)	24,415	0	(0.0%)
Hydro (6.4%)	9,410	0	(0.0%)
Imports (1.6%)	2,324		
RES (69.6%)	101,755	848	(0.6%)
Crete RES (2.6%)	3,832	0	(0.0%)
BESS (0.1%)	110	128	(0.1%)
HV Load (0.0%)	0	19,936	(13.6%)
MV Load (0.0%)	0	22,917	(15.7%)
LV Load (0.0%)	0	69,622	(47.6%)
Crete Load (0.0%)	0	7,163	(4.9%)
Pumping (0.0%)	0	625	(0.4%)
Exports		23,137	(15.8%)
Sys.Losses (0.0%)	0	1,862	(1.3%)
D/R Load (0.0%)	0	0	(0.0%)

