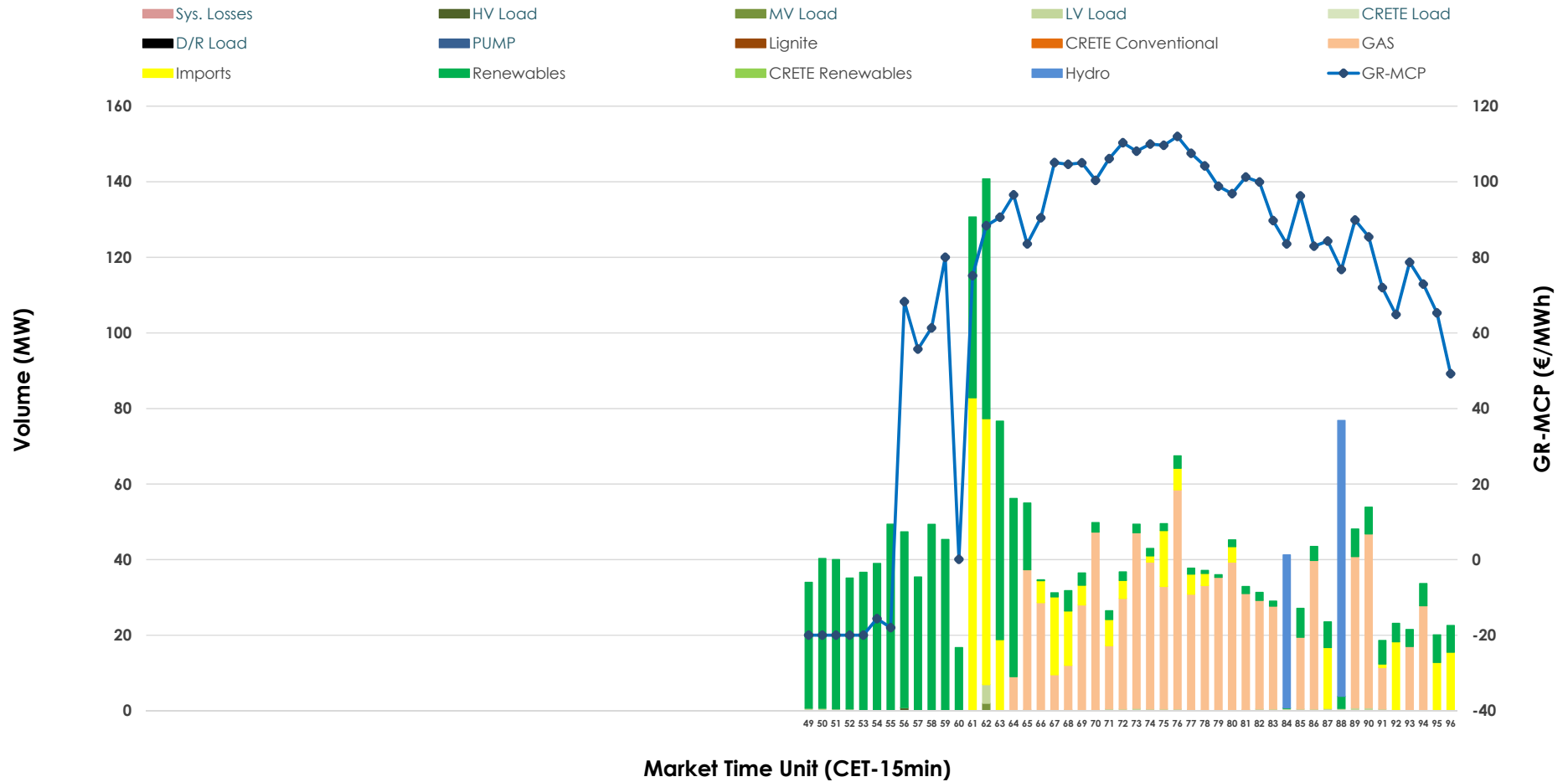


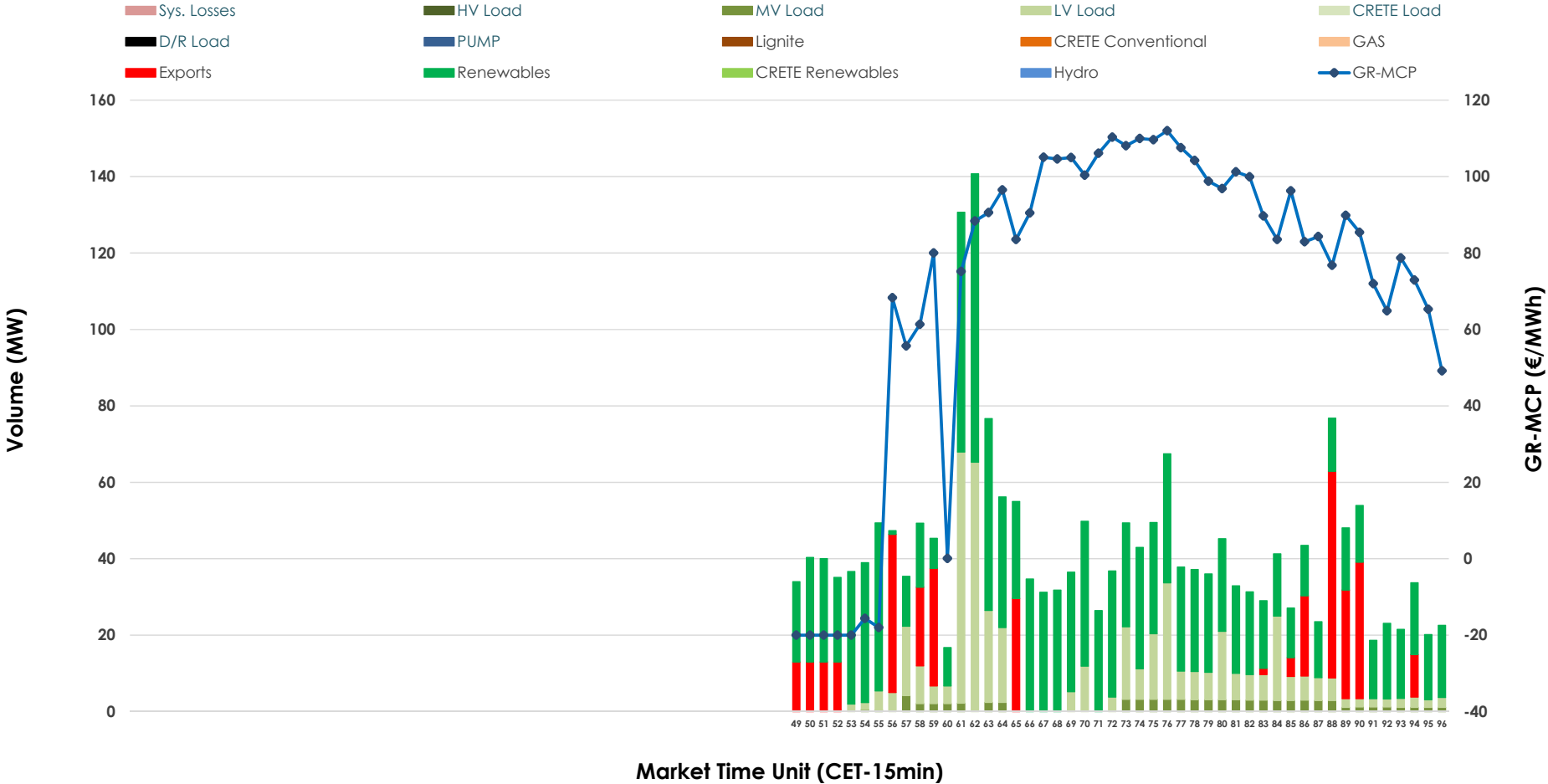


# IDA '3' Market Outlook

21.02.2026 IDA '3' Market - Sell



21.02.2026 IDA '3' Market - Buy



### GR Bidding Zone Weekly Figures

Delivery Day	15.02	16.02	17.02	18.02	19.02	20.02	21.02
	👇 -27%	👆 78%	👇 -11%	👇 -1%	👆 5%	👆 3%	👉 0%
<b>Avg.MCP (€/MWh)</b>	42.34	75.28	67.12	66.30	69.73	71.55	71.42
<b>Max.MCP (€/MWh)</b>	92.78	163.98	156.53	183.02	153.38	126.38	112.00
<b>Min.MCP (€/MWh)</b>	-8.53	-35.00	-10.00	-29.99	-35.00	-8.73	-19.99
	👆 5%	👆 32%	👇 -28%	👇 -22%	👆 25%	👆 4%	👇 -55%
<b>Tot.Vol(GWh)</b>	2.40	3.18	2.27	1.77	2.20	2.30	1.04

### Trades by Order Type

Delivery Day		15.02	16.02	17.02	18.02	19.02	20.02	21.02	
<b>Ord Price Type</b>		<b>Sell &amp; Buy Trades in (GWh) per Price Type</b>							<b>(%)</b>
<b>PPT</b>	(S)	0.000	0.000	0.000	0.000	0.000	0.000	0.000	0.00%
<b>HBD</b>	(S)	1.202	0.768	0.877	0.462	0.312	0.979	0.440	84.30%
<b>BLK</b>	(S)	0.000	0.000	0.000	0.000	0.000	0.000	0.000	0.00%
<b>CPL</b>	(S)	0.000	0.822	0.261	0.421	0.789	0.169	0.082	15.70%
<b>PPT</b>	(B)	0.000	0.000	0.000	0.000	0.000	0.000	0.000	0.00%
<b>HBD</b>	(B)	1.027	1.525	0.889	0.696	0.877	1.098	0.439	84.13%
<b>BLK</b>	(B)	0.000	0.000	0.000	0.000	0.000	0.000	0.000	0.00%
<b>CPL</b>	(B)	0.175	0.064	0.248	0.187	0.224	0.051	0.083	15.87%
		<b>Sell &amp; Buy Orders Traded per Price Type</b>							<b>(%)</b>
<b>PPT</b>	(S)	0	0	0	0	0	0	0	0.00%
<b>HBD</b>	(S)	165	181	86	108	76	215	145	100.00%
<b>BLK</b>	(S)	0	0	0	0	0	0	0	0.00%
<b>PPT</b>	(B)	0	0	0	0	0	0	0	0.00%
<b>HBD</b>	(B)	137	330	319	395	226	286	225	100.00%
<b>BLK</b>	(B)	0	0	0	0	0	0	0	0.00%

**MCP** Market Clearing Price (€/MWh)  
**PPT** Priority Price-Taking  
**HBD** Hybrid  
**BLK** Block  
**CPL** Market Coupling Flow

### Trade's Volume Mix

	Sell - MWh	Buy - MWh	
<b>Lignite</b> (0.0%)	0	0	(0.0%)
<b>Crete Conv.</b> (0.0%)	0	0	(0.0%)
<b>Gas</b> (39.1%)	204	0	(0.0%)
<b>Hydro</b> (5.4%)	28	0	(0.0%)
<b>Imports</b> (15.7%)	82		
<b>RES</b> (38.6%)	202	308	(59.1%)
<b>Crete RES</b> (0.0%)	0	0	(0.0%)
<b>HV Load</b> (0.0%)	0	0	(0.0%)
<b>MV Load</b> (0.1%)	1	19	(3.7%)
<b>LV Load</b> (1.0%)	5	112	(21.4%)
<b>Crete Load</b> (0.0%)	0	0	(0.0%)
<b>Pumping</b> (0.0%)	0	0	(0.0%)
<b>Exports</b>		83	(15.9%)
<b>Sys.Losses</b> (0.0%)	0	0	(0.0%)
<b>D/R Load</b> (0.0%)	0	0	(0.0%)

