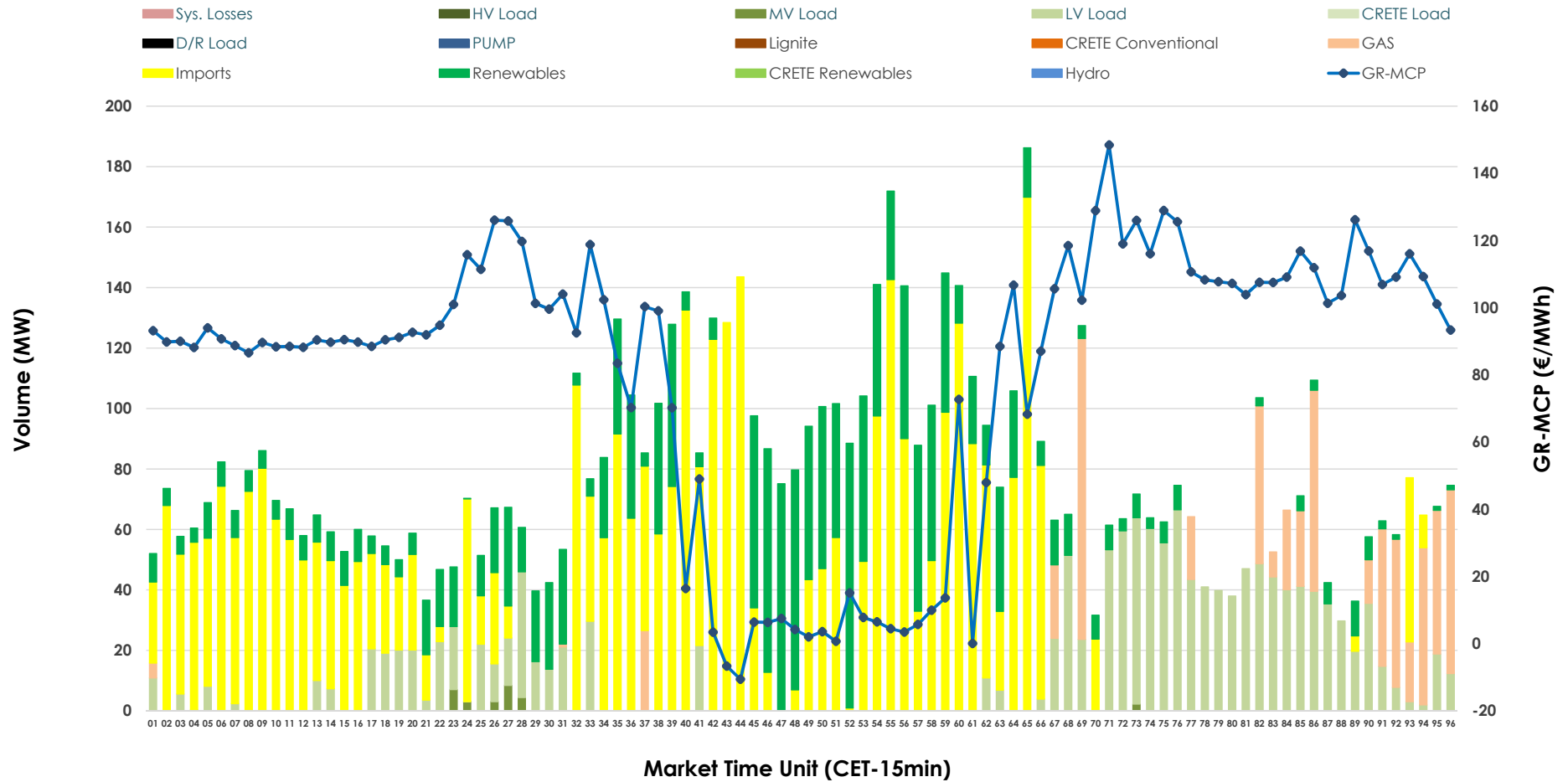


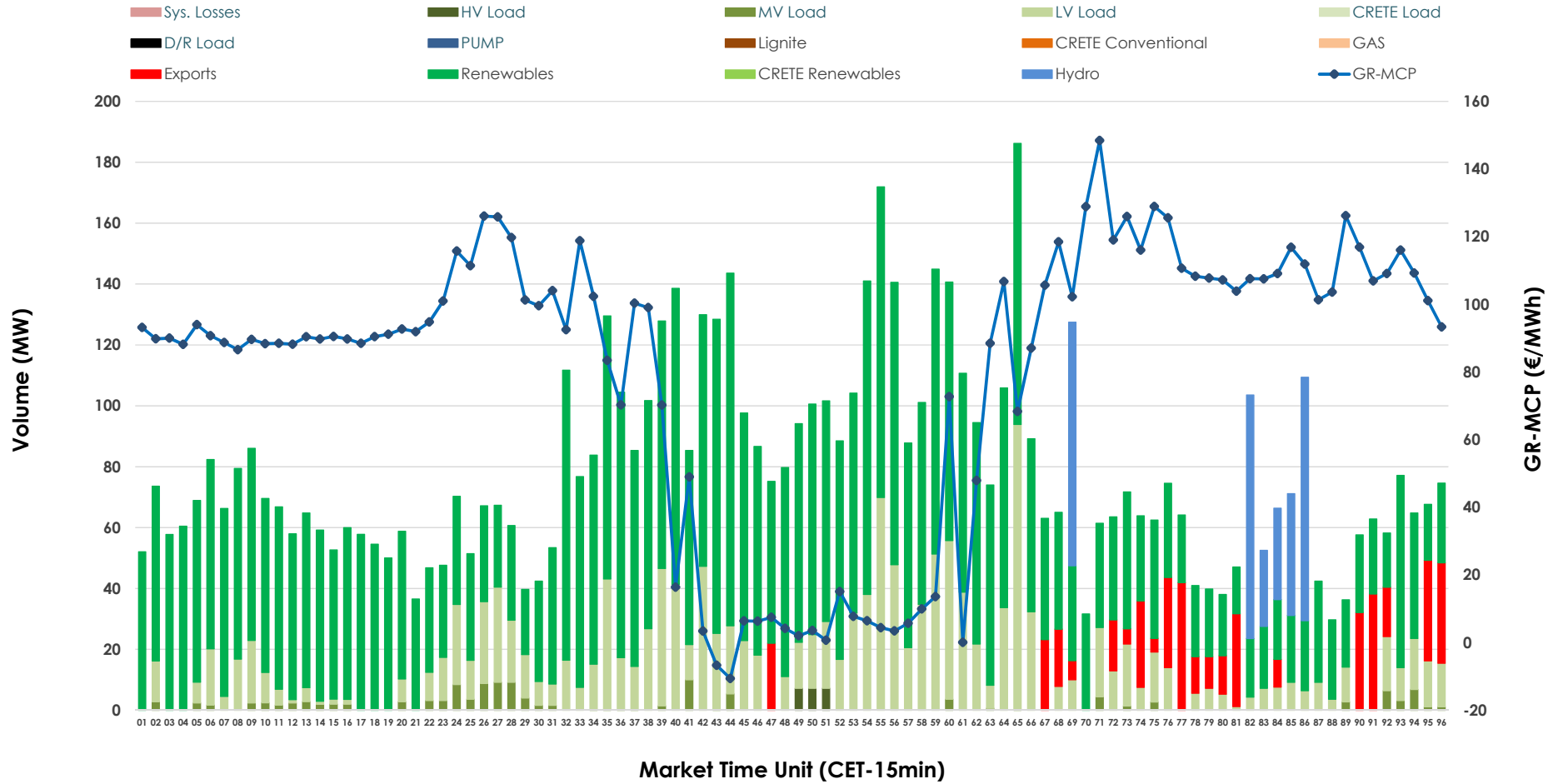


IDA '2' Market Outlook

18.03.2026 IDA '2' Market - Sell



18.03.2026 IDA '2' Market - Buy



GR Bidding Zone Weekly Figures

Delivery Day	12.03	13.03	14.03	15.03	16.03	17.03	18.03
	↗ 14%	↘ -30%	↗ 7%	↘ -6%	↗ 34%	↗ 11%	↘ -31%
Avg.MCP (€/MWh)	110.47	77.52	83.21	78.46	104.89	116.34	80.64
Max.MCP (€/MWh)	245.21	202.79	177.47	172.20	197.06	193.25	148.43
Min.MCP (€/MWh)	-5.52	-24.50	-20.66	-21.83	28.53	60.40	-10.62
	↘ -26%	↗ 68%	↘ -25%	↗ 30%	↘ -17%	↘ -27%	↗ 2%
Tot.Vol(GWh)	3.81	6.41	4.78	6.22	5.17	3.75	3.81

Trades by Order Type

Delivery Day		12.03	13.03	14.03	15.03	16.03	17.03	18.03	
Ord Price Type		Sell & Buy Trades in (GWh) per Price Type							(%)
PPT	(S)	0.000	0.000	0.000	0.000	0.000	0.000	0.000	0.00%
HBD	(S)	1.294	3.108	1.681	1.893	1.823	1.679	0.962	50.52%
BLK	(S)	0.000	0.000	0.000	0.000	0.000	0.000	0.000	0.00%
CPL	(S)	0.610	0.097	0.711	1.216	0.761	0.194	0.942	49.48%
PPT	(B)	0.000	0.000	0.000	0.000	0.000	0.000	0.000	0.00%
HBD	(B)	1.045	1.311	2.145	2.551	1.583	1.440	1.798	94.44%
BLK	(B)	0.000	0.000	0.000	0.000	0.000	0.000	0.000	0.00%
CPL	(B)	0.859	1.894	0.246	0.559	1.001	0.434	0.106	5.56%
		Sell & Buy Orders Traded per Price Type							(%)
PPT	(S)	0	0	0	0	0	0	0	0.00%
HBD	(S)	291	287	277	292	391	427	207	100.00%
BLK	(S)	0	0	0	0	0	0	0	0.00%
PPT	(B)	0	0	0	0	0	0	0	0.00%
HBD	(B)	315	286	376	577	341	584	550	100.00%
BLK	(B)	0	0	0	0	0	0	0	0.00%

- MCP** Market Clearing Price (€/MWh)
- PPT** Priority Price-Taking
- HBD** Hybrid
- BLK** Block
- CPL** Market Coupling Flow

Trade's Volume Mix

		Sell - MWh	Buy - MWh	
Lignite	(0.0%)	0	0	(0.0%)
Crete Conv.	(0.0%)	0	0	(0.0%)
Gas	(8.5%)	161	0	(0.0%)
Hydro	(0.0%)	0	84	(4.4%)
Imports	(49.5%)	942		
RES	(22.7%)	432	1,280	(67.3%)
Crete RES	(0.0%)	0	0	(0.0%)
HV Load	(0.0%)	0	5	(0.3%)
MV Load	(0.4%)	7	33	(1.7%)
LV Load	(19.0%)	361	395	(20.8%)
Crete Load	(0.0%)	0	0	(0.0%)
Pumping	(0.0%)	0	0	(0.0%)
Exports			106	(5.6%)
Sys.Losses	(0.0%)	0	0	(0.0%)
D/R Load	(0.0%)	0	0	(0.0%)

