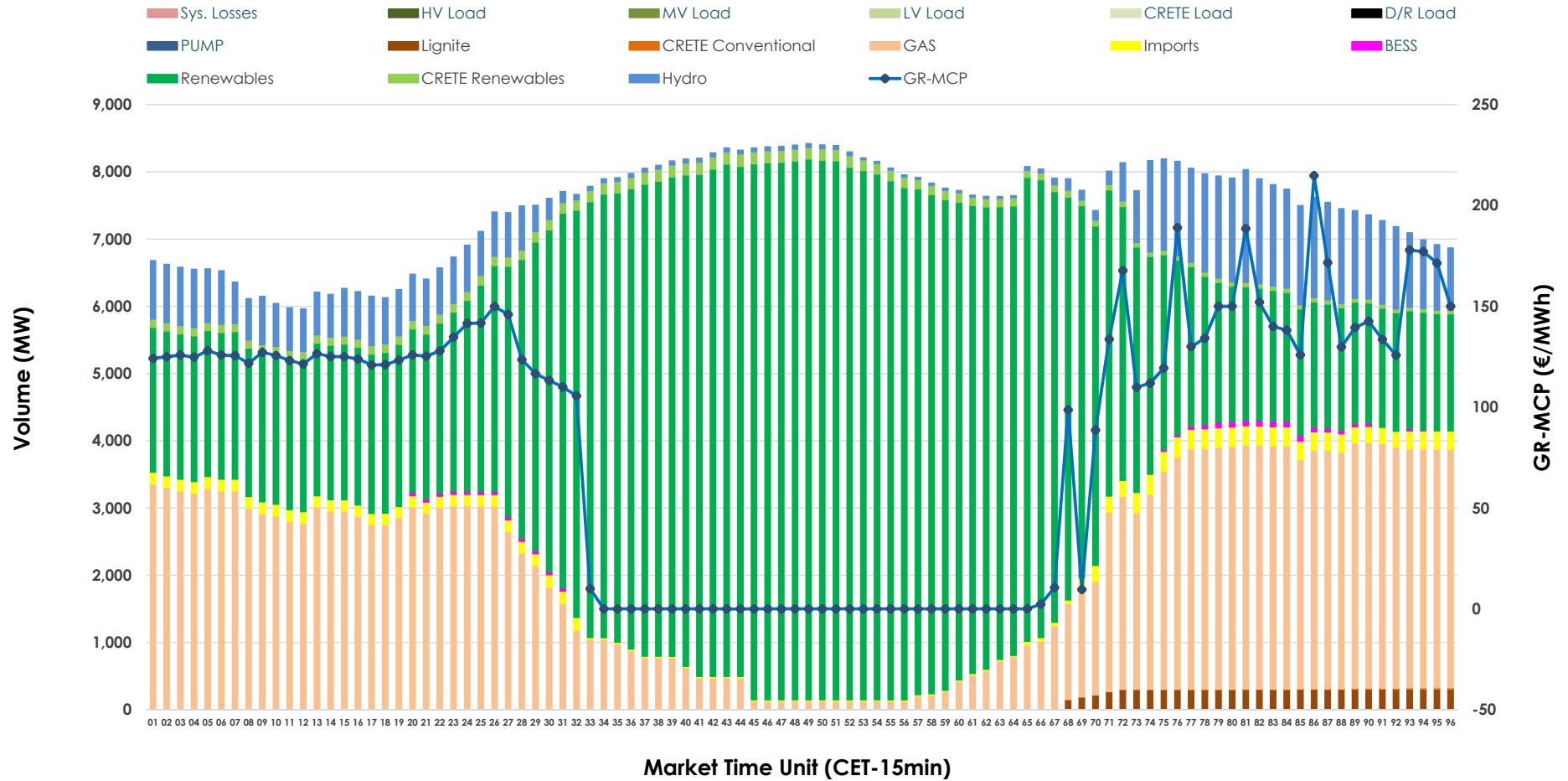


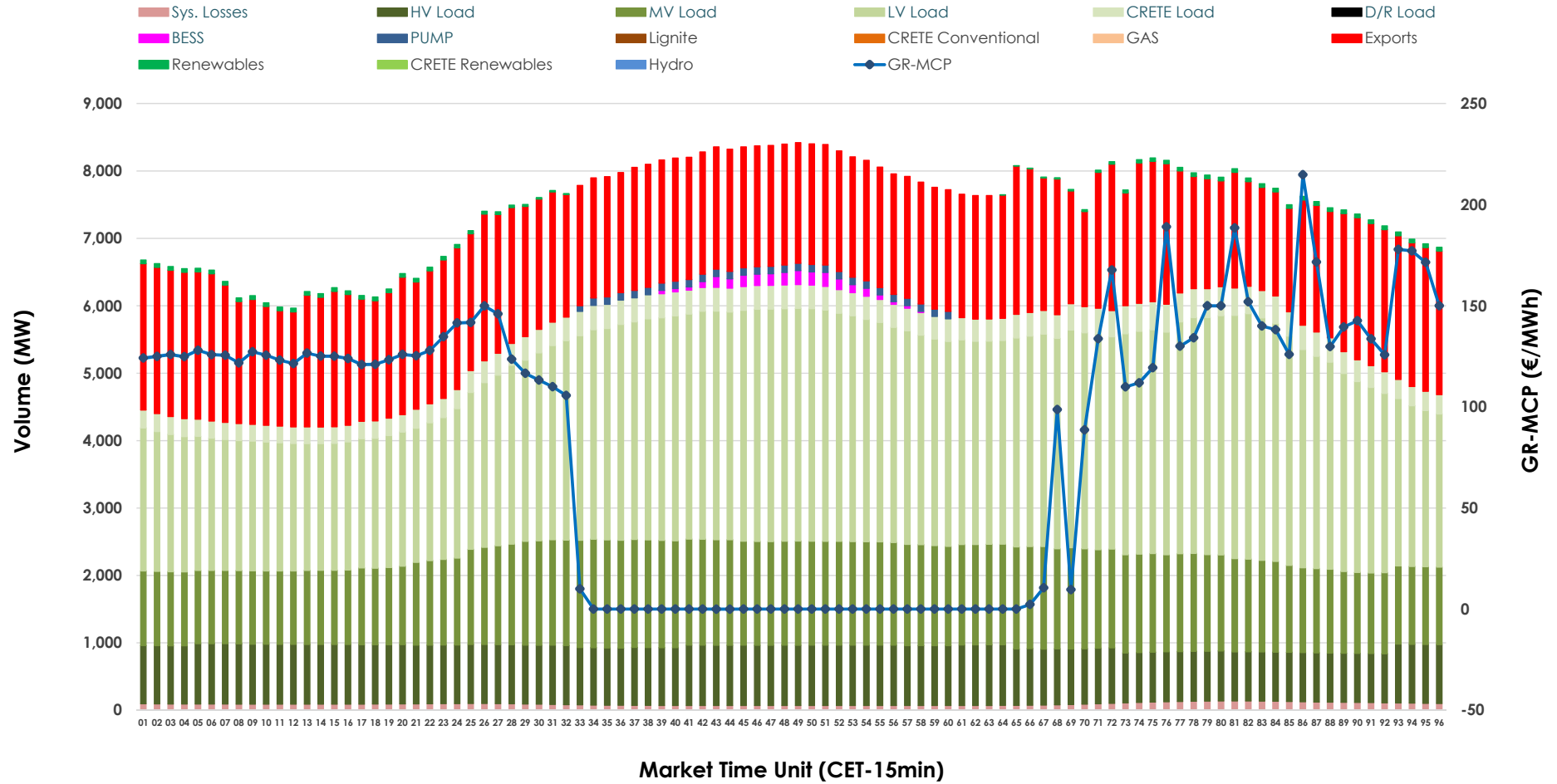


# Day-Ahead Market Outlook

## 26.05.2026 Day-Ahead Market - Sell



## 26.05.2026 Day-Ahead Market - Buy



### GR Bidding Zone Weekly Figures

Delivery Day	20.05	21.05	22.05	23.05	24.05	25.05	26.05
	↓ -48%	↑ 35%	↔ 2%	↓ -22%	↓ -16%	↑ 22%	↔ 15%
<b>Avg.MCP (€/MWh)</b>	67.26	90.99	92.38	71.90	60.30	73.44	84.59
<b>Max.MCP (€/MWh)</b>	209.51	227.11	167.36	185.46	169.90	174.16	214.80
<b>Min.MCP (€/MWh)</b>	-0.10	-0.01	0.00	-3.23	-6.00	-0.01	-0.01
	↔ 5%	↓ -2%	↓ -2%	↓ -9%	↓ -3%	↑ 18%	↑ 7%
<b>Tot.Vol(GWh)</b>	336.14	330.85	323.31	294.58	286.12	336.26	358.48

### Trades by Order Type

Delivery Day		20.05	21.05	22.05	23.05	24.05	25.05	26.05	
<b>Ord Price Type</b>		<b>Sell &amp; Buy Trades in (GWh) per Price Type</b>							<b>(%)</b>
<b>PPT</b>	(S)	73.927	63.567	68.690	66.527	72.052	76.606	78.984	44.07%
<b>HBD</b>	(S)	68.471	73.459	68.593	61.509	53.769	70.070	75.012	41.85%
<b>BLK</b>	(S)	25.673	28.387	24.372	18.721	16.875	21.452	25.245	14.08%
<b>CPL</b>	(S)	0.000	0.012	0.000	0.534	0.365	0.000	0.000	0.00%
<b>PPT</b>	(B)	14.511	14.705	14.085	13.748	13.038	16.106	15.384	8.58%
<b>HBD</b>	(B)	126.040	125.382	123.619	115.047	109.432	124.416	132.398	73.87%
<b>BLK</b>	(B)	0.000	0.000	0.000	0.000	0.000	0.000	0.000	0.00%
<b>CPL</b>	(B)	27.520	25.339	23.951	18.496	20.590	27.606	31.459	17.55%
		<b>Sell &amp; Buy Orders Traded per Price Type</b>							<b>(%)</b>
<b>PPT</b>	(S)	1694	1687	1803	1757	1768	1693	1809	36.48%
<b>HBD</b>	(S)	3156	3352	3411	3034	2653	2977	3138	63.28%
<b>BLK</b>	(S)	8	9	9	12	9	11	12	0.24%
<b>PPT</b>	(B)	2307	2317	2289	2306	2327	2358	2362	36.58%
<b>HBD</b>	(B)	3990	3855	3934	3851	3799	3699	4095	63.42%
<b>BLK</b>	(B)	0	0	0	0	0	0	0	0.00%

- MCP** Market Clearing Price (€/MWh)
- PPT** Priority Price-Taking
- HBD** Hybrid
- BLK** Block
- CPL** Market Coupling Flow

### Trade's Volume Mix

	Sell - MWh	Buy - MWh	
<b>Lignite</b> (1.2%)	2,100	0	(0.0%)
<b>Crete Conv.</b> (0.0%)	52	0	(0.0%)
<b>Gas</b> (28.1%)	50,393	0	(0.0%)
<b>Hydro</b> (7.8%)	13,895	0	(0.0%)
<b>Imports</b> (2.0%)	3,514		
<b>RES</b> (59.1%)	105,951	738	(0.4%)
<b>Crete RES</b> (1.6%)	2,919	0	(0.0%)
<b>BESS</b> (0.2%)	416	597	(0.3%)
<b>HV Load</b> (0.0%)	0	20,308	(11.3%)
<b>MV Load</b> (0.0%)	0	33,028	(18.4%)
<b>LV Load</b> (0.0%)	0	68,272	(38.1%)
<b>Crete Load</b> (0.0%)	0	7,970	(4.4%)
<b>Pumping</b> (0.0%)	0	764	(0.4%)
<b>Exports</b>		45,352	(25.3%)
<b>Sys.Losses</b> (0.0%)	0	2,212	(1.2%)
<b>D/R Load</b> (0.0%)	0	0	(0.0%)

