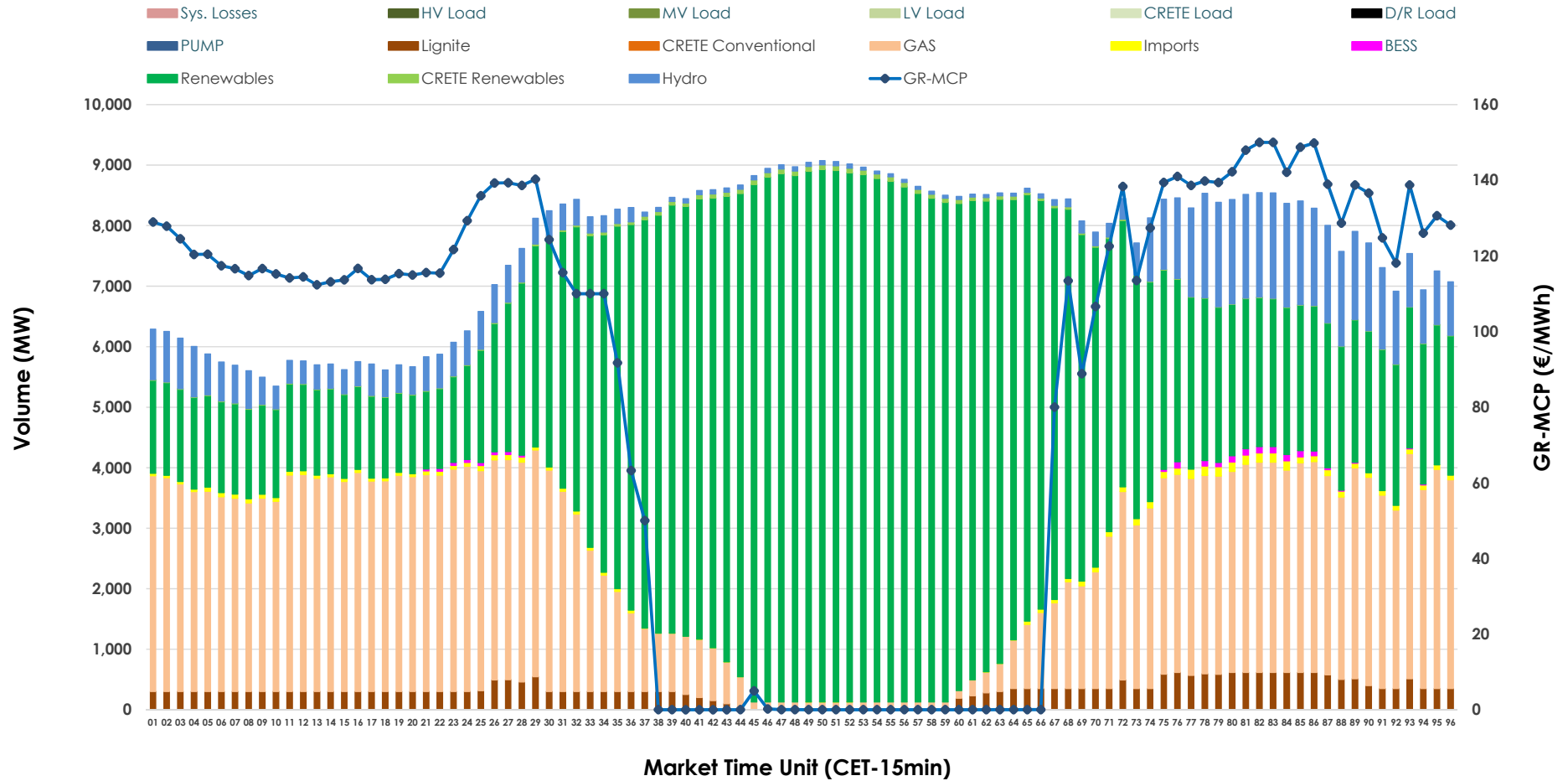


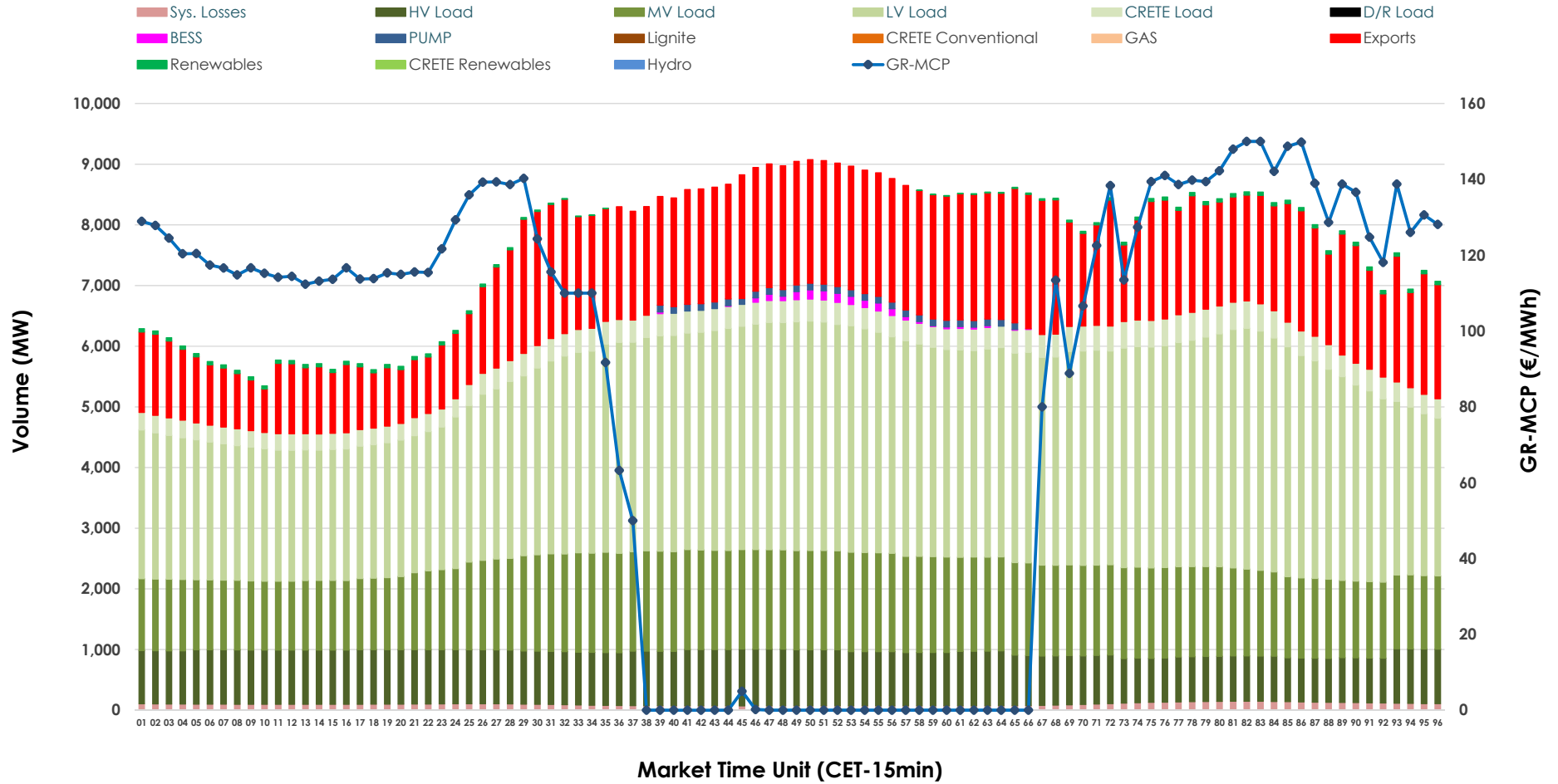


Day-Ahead Market Outlook

03.06.2026 Day-Ahead Market - Sell



03.06.2026 Day-Ahead Market - Buy



GR Bidding Zone Weekly Figures

Delivery Day	28.05	29.05	30.05	31.05	01.06	02.06	03.06
	👇 -7%	👇 -7%	👆 11%	👇 -6%	👆 11%	👉 -1%	👇 -11%
Avg.MCP (€/MWh)	89.64	83.77	92.62	87.36	97.12	96.31	85.72
Max.MCP (€/MWh)	199.16	173.41	216.79	166.99	185.00	171.60	150.00
Min.MCP (€/MWh)	0.00	-0.01	-1.64	-0.01	0.00	0.00	0.00
	👇 -2%	👆 4%	👇 -13%	👇 -3%	👆 11%	👆 5%	👆 3%
Tot.Vol(GWh)	348.78	363.45	316.75	306.63	339.56	357.43	367.73

Trades by Order Type

Delivery Day		28.05	29.05	30.05	31.05	01.06	02.06	03.06	
Ord Price Type		Sell & Buy Trades in (GWh) per Price Type							(%)
PPT	(S)	62.856	71.215	67.224	63.025	62.576	64.590	68.089	37.03%
HBD	(S)	78.987	80.425	65.767	62.234	76.261	80.307	78.424	42.65%
BLK	(S)	32.486	30.087	25.384	28.056	30.945	33.821	37.350	20.31%
CPL	(S)	0.063	0.000	0.000	0.000	0.000	0.000	0.000	0.00%
PPT	(B)	15.640	15.607	15.170	13.900	15.188	15.274	15.118	8.22%
HBD	(B)	135.255	136.644	122.362	115.985	128.365	135.591	142.718	77.62%
BLK	(B)	0.000	0.000	0.000	0.000	0.000	0.000	0.000	0.00%
CPL	(B)	23.497	29.476	20.843	23.430	26.229	27.852	26.028	14.16%
		Sell & Buy Orders Traded per Price Type							(%)
PPT	(S)	1843	1765	1835	1814	1750	1754	1740	34.31%
HBD	(S)	3490	3295	3258	3170	3394	3467	3314	65.35%
BLK	(S)	13	13	17	15	15	15	17	0.34%
PPT	(B)	2370	2354	2346	2301	2384	2392	2388	37.46%
HBD	(B)	3997	4076	3982	3669	3831	3932	3986	62.54%
BLK	(B)	0	0	0	0	0	0	0	0.00%

- MCP** Market Clearing Price (€/MWh)
- PPT** Priority Price-Taking
- HBD** Hybrid
- BLK** Block
- CPL** Market Coupling Flow

Trade's Volume Mix

		Sell - MWh	Buy - MWh	
Lignite	(4.1%)	7,459	0	(0.0%)
Crete Conv.	(0.0%)	0	0	(0.0%)
Gas	(30.4%)	55,887	0	(0.0%)
Hydro	(7.4%)	13,581	0	(0.0%)
Imports	(0.7%)	1,315		
RES	(56.8%)	104,490	771	(0.4%)
Crete RES	(0.4%)	770	0	(0.0%)
BESS	(0.2%)	361	406	(0.2%)
HV Load	(0.0%)	0	20,565	(11.2%)
MV Load	(0.0%)	0	34,346	(18.7%)
LV Load	(0.0%)	0	75,820	(41.2%)
Crete Load	(0.0%)	0	8,489	(4.6%)
Pumping	(0.0%)	0	739	(0.4%)
Exports			40,370	(22.0%)
Sys.Losses	(0.0%)	0	2,358	(1.3%)
D/R Load	(0.0%)	0	0	(0.0%)

