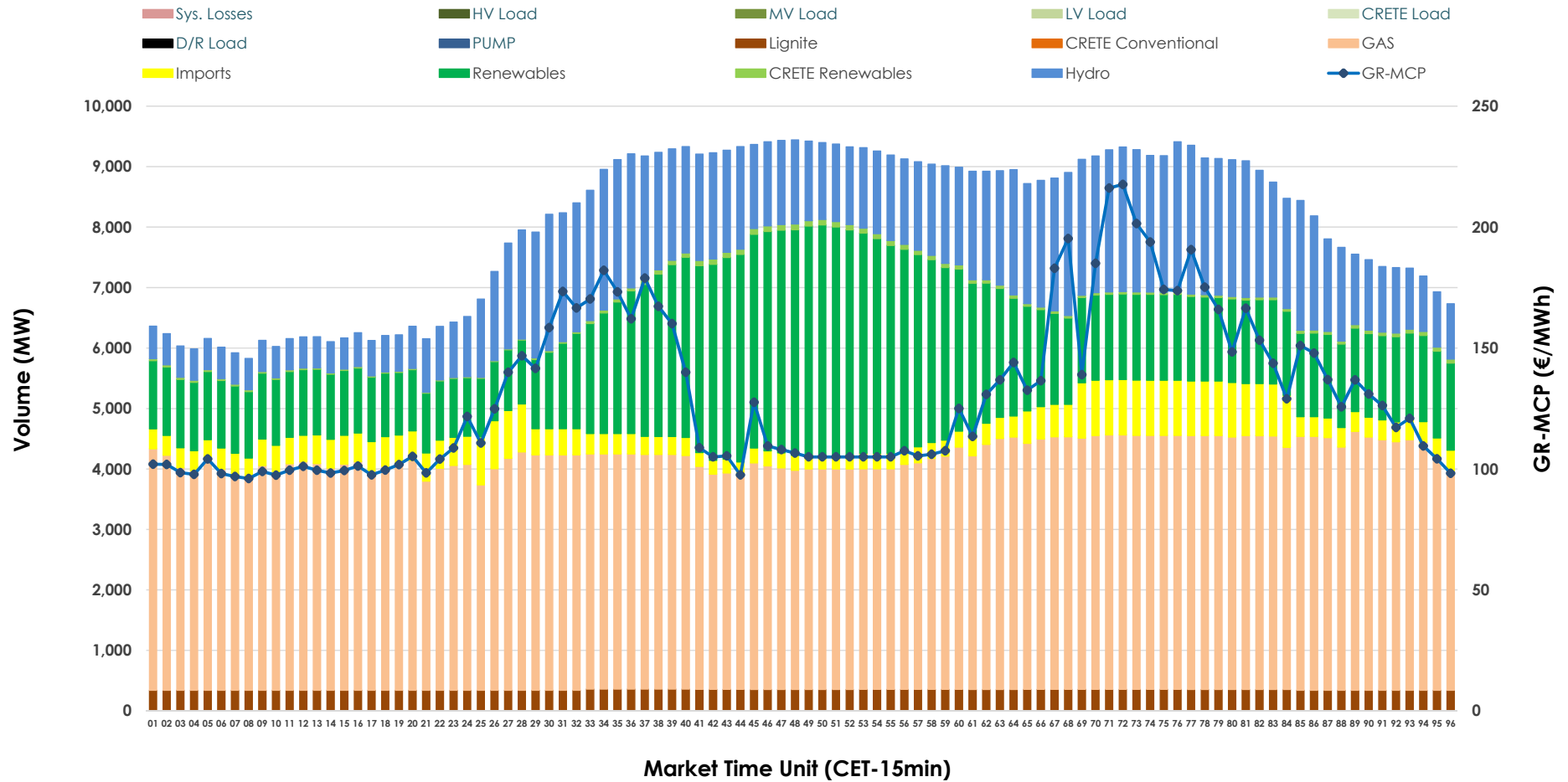


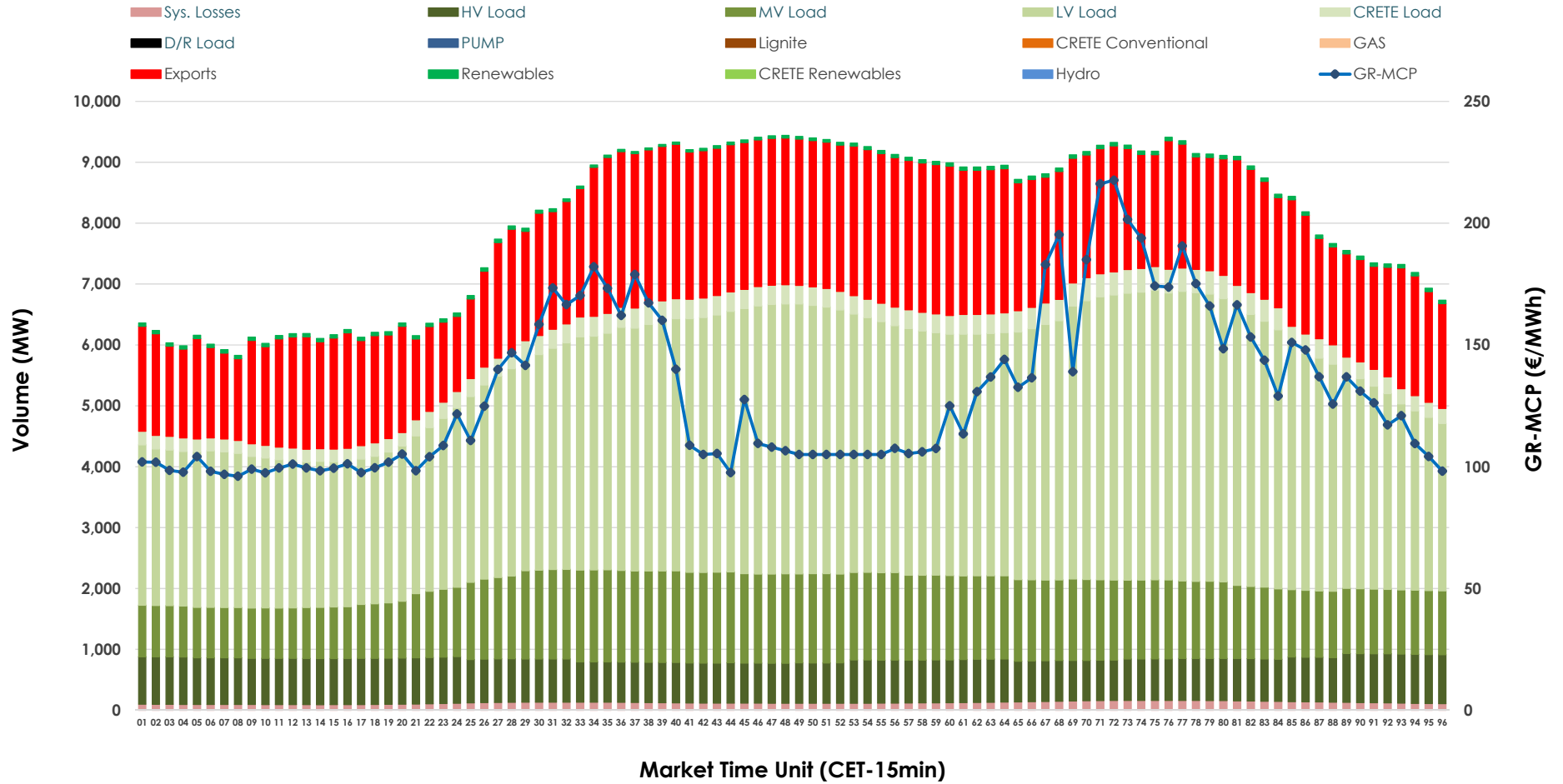


Day-Ahead Market Outlook

09.02.2026 Day-Ahead Market - Sell



09.02.2026 Day-Ahead Market - Buy



GR Bidding Zone Weekly Figures

Delivery Day	03.02	04.02	05.02	06.02	07.02	08.02	09.02
	➔ 0%	⬇️ -18%	➔ 1%	⬇️ -5%	⬇️ -28%	➔ 26%	⬆️ 50%
Avg.MCP (€/MWh)	121.82	100.27	101.12	96.42	69.15	87.19	130.53
Max.MCP (€/MWh)	216.88	137.73	158.84	143.87	138.17	137.01	217.65
Min.MCP (€/MWh)	77.88	0.01	52.50	0.10	-0.10	0.01	96.06
	⬇️ -2%	➔ 0%	➔ 1%	⬇️ -3%	⬇️ -6%	⬇️ -4%	➔ 4%
Tot.Vol(GWh)	420.24	422.19	425.83	412.48	387.98	372.80	387.84

Trades by Order Type

Delivery Day		03.02	04.02	05.02	06.02	07.02	08.02	09.02	
Ord Price Type		Sell & Buy Trades in (GWh) per Price Type							(%)
PPT	(S)	86.646	99.050	100.032	98.643	97.391	90.104	88.222	45.49%
HBD	(S)	71.789	71.845	75.250	72.470	75.676	70.823	62.341	32.15%
BLK	(S)	48.842	40.198	37.633	32.126	20.926	25.473	40.788	21.03%
CPL	(S)	2.844	0.000	0.000	3.000	0.000	0.000	2.568	1.32%
PPT	(B)	14.445	13.914	13.913	13.578	13.223	13.616	13.693	7.06%
HBD	(B)	156.715	151.872	152.005	148.188	135.733	132.020	145.360	74.96%
BLK	(B)	0.000	0.000	0.000	0.000	0.000	0.000	0.000	0.00%
CPL	(B)	38.961	45.307	46.997	44.473	45.036	40.764	34.865	17.98%
		Sell & Buy Orders Traded per Price Type							(%)
PPT	(S)	2232	2251	2154	2193	2220	2129	2318	43.42%
HBD	(S)	2988	2798	2809	2799	2348	2697	3008	56.35%
BLK	(S)	15	15	13	13	8	11	12	0.22%
PPT	(B)	2216	2234	2227	2220	2356	2334	2236	36.62%
HBD	(B)	3884	3985	3881	4062	4294	4200	3870	63.38%
BLK	(B)	0	0	0	0	0	0	0	0.00%

- MCP** Market Clearing Price (€/MWh)
- PPT** Priority Price-Taking
- HBD** Hybrid
- BLK** Block
- CPL** Market Coupling Flow

Trade's Volume Mix

		Sell - MWh	Buy - MWh	
Lignite	(4.3%)	8,347	0	(0.0%)
Crete Conv.	(0.0%)	0	0	(0.0%)
Gas	(48.1%)	93,277	0	(0.0%)
Hydro	(18.4%)	35,709	0	(0.0%)
Imports	(5.7%)	11,108		
RES	(22.8%)	44,308	1,216	(0.6%)
Crete RES	(0.6%)	1,169	0	(0.0%)
HV Load	(0.0%)	0	17,168	(8.9%)
MV Load	(0.0%)	0	29,378	(15.1%)
LV Load	(0.0%)	0	87,859	(45.3%)
Crete Load	(0.0%)	0	7,193	(3.7%)
Pumping	(0.0%)	0	0	(0.0%)
Exports			48,133	(24.8%)
Sys.Losses	(0.0%)	0	2,970	(1.5%)
D/R Load	(0.0%)	0	0	(0.0%)

