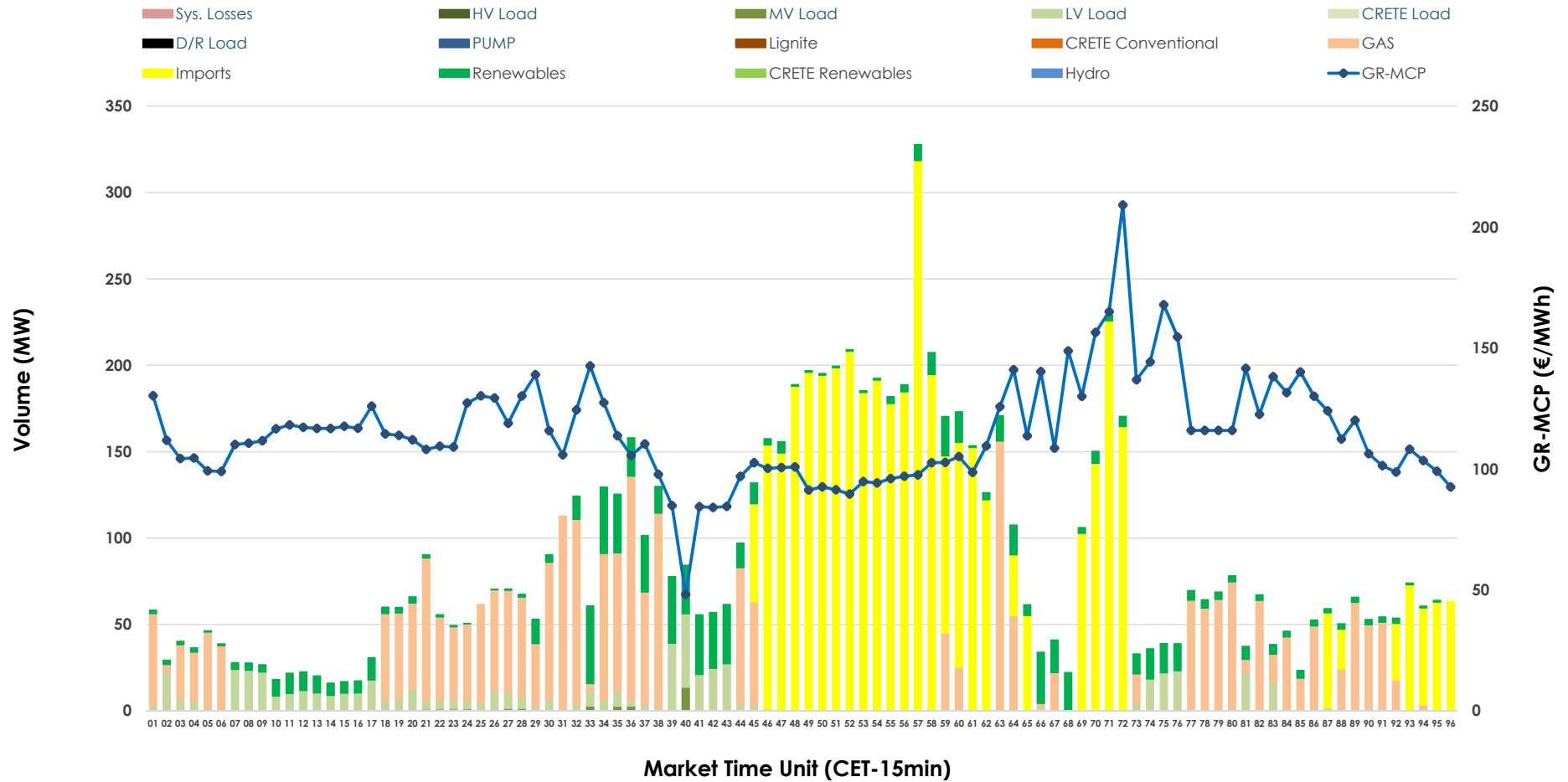


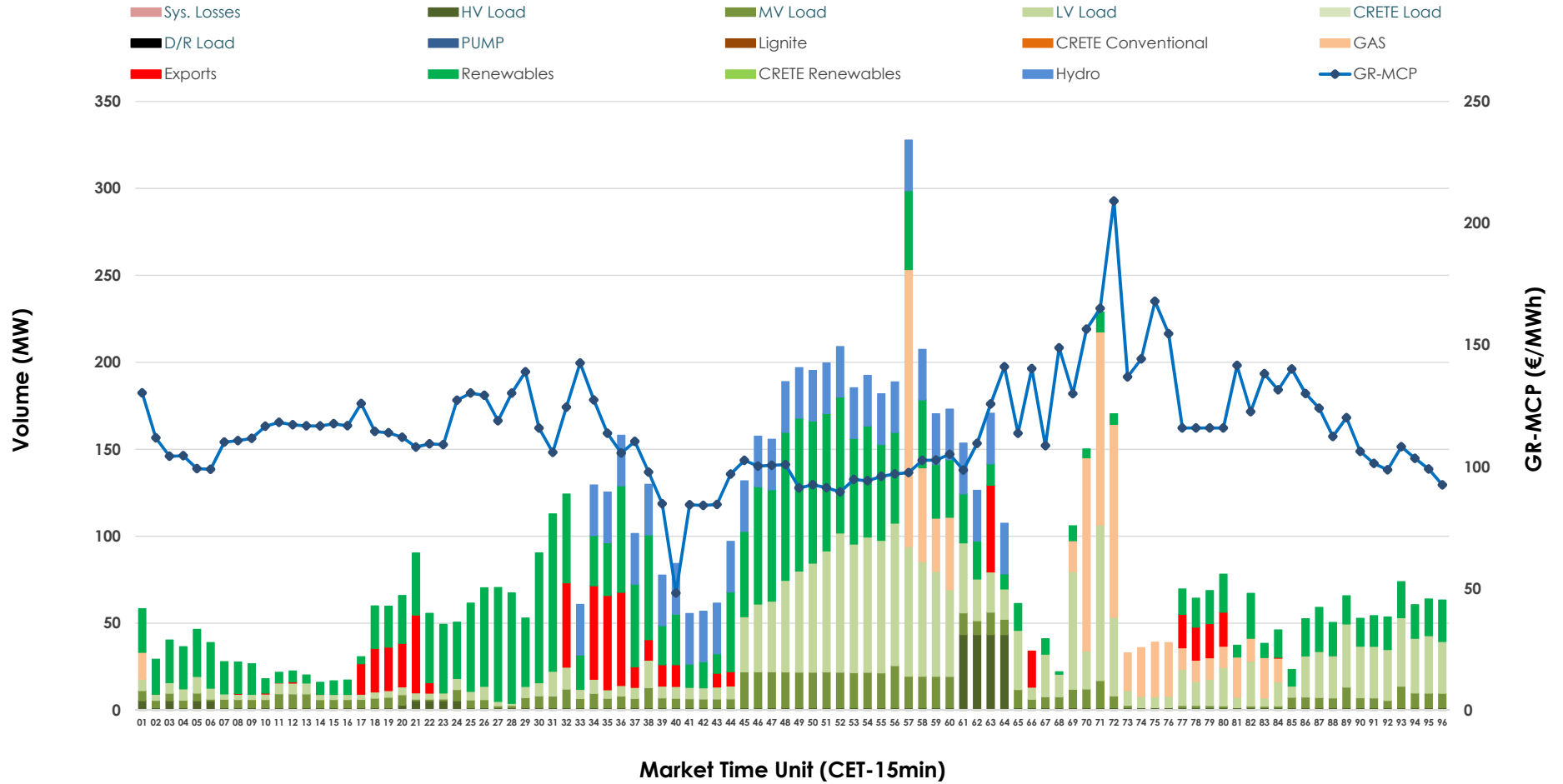


# IDA '1' Market Outlook

17.03.2026 IDA '1' Market - Sell



### 17.03.2026 IDA '1' Market - Buy



### GR Bidding Zone Weekly Figures

Delivery Day	11.03	12.03	13.03	14.03	15.03	16.03	17.03
	↗ 16%	↗ 18%	↘ -28%	↗ 4%	↘ -3%	↗ 26%	↗ 16%
<b>Avg.MCP (€/MWh)</b>	92.43	109.46	78.36	81.45	78.90	99.43	114.99
<b>Max.MCP (€/MWh)</b>	243.25	257.52	206.44	183.47	158.04	199.06	209.10
<b>Min.MCP (€/MWh)</b>	-6.99	-9.65	-24.30	-17.57	-15.50	13.78	48.13
	↘ -46%	↗ 79%	↗ 14%	↘ -36%	↘ -20%	↘ -1%	↗ 58%
<b>Tot.Vol(GWh)</b>	2.58	4.61	5.27	3.37	2.69	2.67	4.22

### Trades by Order Type

Delivery Day		11.03	12.03	13.03	14.03	15.03	16.03	17.03	
<b>Ord Price Type</b>		<b>Sell &amp; Buy Trades in (GWh) per Price Type</b>							<b>(%)</b>
<b>PPT</b>	(S)	0.000	0.000	0.000	0.000	0.000	0.000	0.000	0.00%
<b>HBD</b>	(S)	1.087	1.942	2.606	1.018	0.554	0.860	1.061	50.30%
<b>BLK</b>	(S)	0.000	0.000	0.000	0.000	0.000	0.000	0.000	0.00%
<b>CPL</b>	(S)	0.203	0.361	0.029	0.665	0.793	0.473	1.049	49.70%
<b>PPT</b>	(B)	0.000	0.000	0.000	0.000	0.000	0.000	0.000	0.00%
<b>HBD</b>	(B)	1.124	2.233	1.733	1.503	1.282	1.083	1.968	93.27%
<b>BLK</b>	(B)	0.000	0.000	0.000	0.000	0.000	0.000	0.000	0.00%
<b>CPL</b>	(B)	0.166	0.070	0.902	0.180	0.066	0.251	0.142	6.73%
		<b>Sell &amp; Buy Orders Traded per Price Type</b>							<b>(%)</b>
<b>PPT</b>	(S)	0	0	0	0	0	0	0	0.00%
<b>HBD</b>	(S)	222	286	300	327	203	156	209	100.00%
<b>BLK</b>	(S)	0	0	0	0	0	0	0	0.00%
<b>PPT</b>	(B)	0	0	0	0	0	0	0	0.00%
<b>HBD</b>	(B)	922	927	1203	882	715	761	835	100.00%
<b>BLK</b>	(B)	0	0	0	0	0	0	0	0.00%

**MCP** Market Clearing Price (€/MWh)  
**PPT** Priority Price-Taking  
**HBD** Hybrid  
**BLK** Block  
**CPL** Market Coupling Flow

### Trade's Volume Mix

		Sell - MWh	Buy - MWh	
<b>Lignite</b>	(0.0%)	0	0	(0.0%)
<b>Crete Conv.</b>	(0.0%)	0	0	(0.0%)
<b>Gas</b>	(32.5%)	687	221	(10.5%)
<b>Hydro</b>	(0.0%)	0	232	(11.0%)
<b>Imports</b>	(49.7%)	1,049		
<b>RES</b>	(10.4%)	220	702	(33.3%)
<b>Crete RES</b>	(0.0%)	0	0	(0.0%)
<b>HV Load</b>	(0.0%)	0	86	(4.1%)
<b>MV Load</b>	(0.3%)	7	189	(9.0%)
<b>LV Load</b>	(7.0%)	148	537	(25.4%)
<b>Crete Load</b>	(0.0%)	0	0	(0.0%)
<b>Pumping</b>	(0.0%)	0	0	(0.0%)
<b>Exports</b>			142	(6.7%)
<b>Sys.Losses</b>	(0.0%)	0	0	(0.0%)
<b>D/R Load</b>	(0.0%)	0	0	(0.0%)

