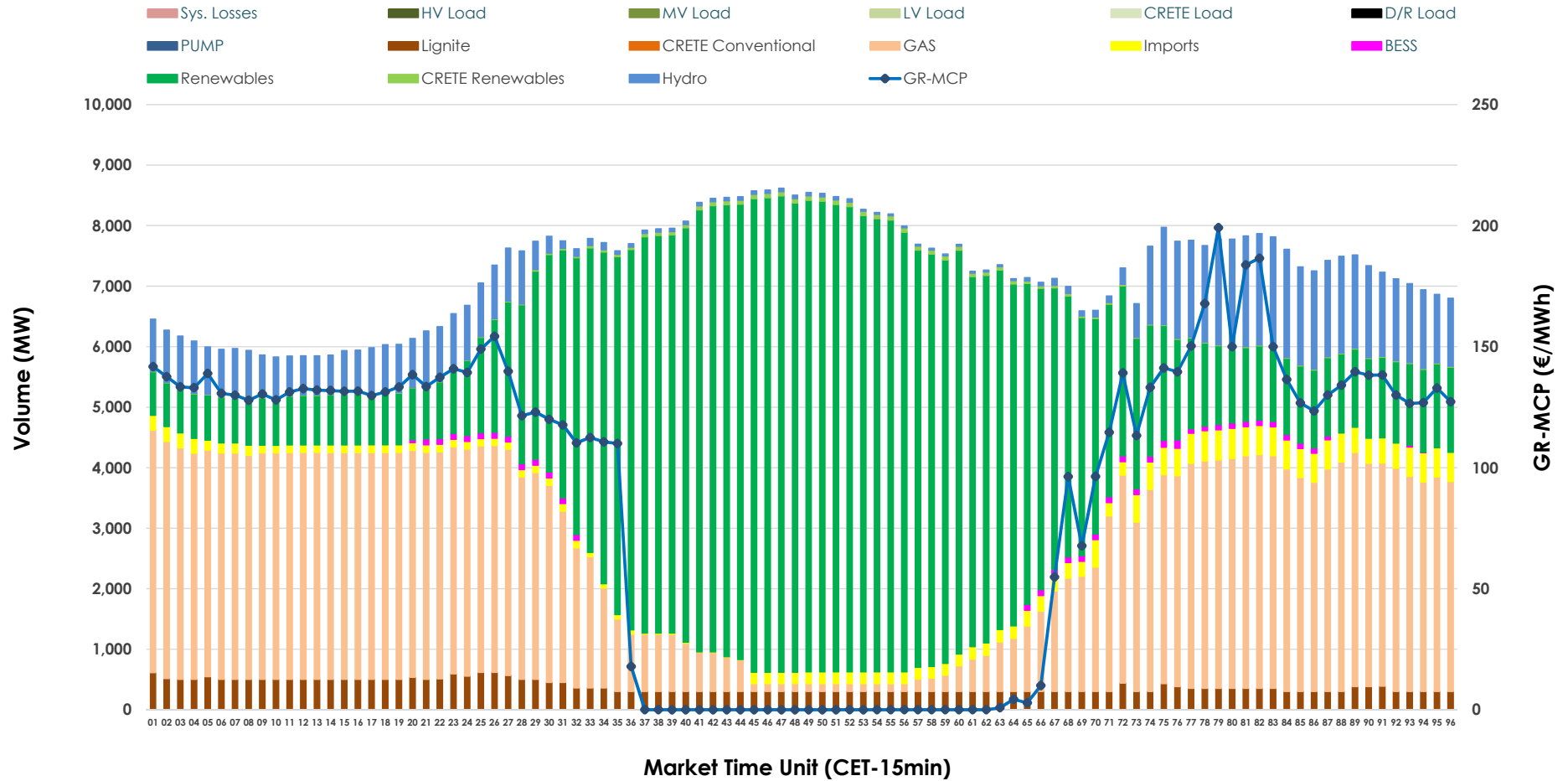


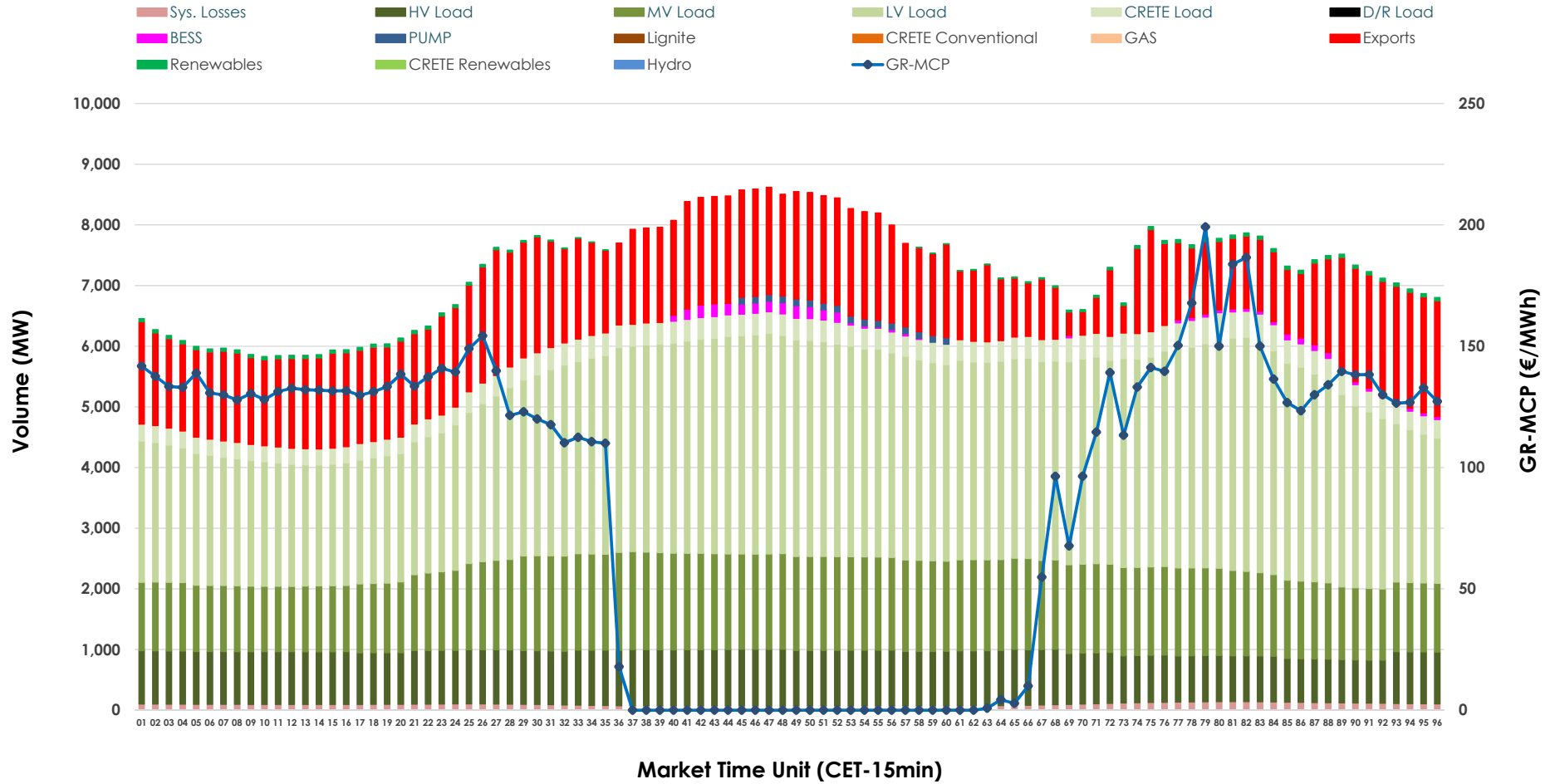


Day-Ahead Market Outlook

28.05.2026 Day-Ahead Market - Sell



28.05.2026 Day-Ahead Market - Buy



GR Bidding Zone Weekly Figures

Delivery Day	22.05	23.05	24.05	25.05	26.05	27.05	28.05
	↗ 2%	↘ -22%	↘ -16%	↗ 22%	↗ 15%	↗ 13%	↘ -7%
Avg.MCP (€/MWh)	92.38	71.90	60.30	73.44	84.59	95.98	89.64
Max.MCP (€/MWh)	167.36	185.46	169.90	174.16	214.80	277.76	199.16
Min.MCP (€/MWh)	0.00	-3.23	-6.00	-0.01	-0.01	-0.01	0.00
	↘ -2%	↘ -9%	↘ -3%	↗ 18%	↗ 7%	↘ -1%	↘ -2%
Tot.Vol(GWh)	323.31	294.58	286.12	336.26	358.48	355.94	348.78

Trades by Order Type

Delivery Day		22.05	23.05	24.05	25.05	26.05	27.05	28.05	
Ord Price Type		Sell & Buy Trades in (GWh) per Price Type							(%)
PPT	(S)	68.690	66.527	72.052	76.606	78.984	68.767	62.856	36.04%
HBD	(S)	68.593	61.509	53.769	70.070	75.012	77.269	78.987	45.29%
BLK	(S)	24.372	18.721	16.875	21.452	25.245	31.936	32.486	18.63%
CPL	(S)	0.000	0.534	0.365	0.000	0.000	0.000	0.063	0.04%
PPT	(B)	14.085	13.748	13.038	16.106	15.384	15.153	15.640	8.97%
HBD	(B)	123.619	115.047	109.432	124.416	132.398	133.694	135.255	77.56%
BLK	(B)	0.000	0.000	0.000	0.000	0.000	0.000	0.000	0.00%
CPL	(B)	23.951	18.496	20.590	27.606	31.459	29.124	23.497	13.47%
		Sell & Buy Orders Traded per Price Type							(%)
PPT	(S)	1803	1757	1768	1693	1809	1828	1843	34.47%
HBD	(S)	3411	3034	2653	2977	3138	3360	3490	65.28%
BLK	(S)	9	12	9	11	12	13	13	0.24%
PPT	(B)	2289	2306	2327	2358	2362	2344	2370	37.22%
HBD	(B)	3934	3851	3799	3699	4095	4069	3997	62.78%
BLK	(B)	0	0	0	0	0	0	0	0.00%

- MCP** Market Clearing Price (€/MWh)
- PPT** Priority Price-Taking
- HBD** Hybrid
- BLK** Block
- CPL** Market Coupling Flow

Trade's Volume Mix

	Sell - MWh	Buy - MWh	
Lignite (5.3%)	9,202	0	(0.0%)
Crete Conv. (0.0%)	0	0	(0.0%)
Gas (34.0%)	59,325	0	(0.0%)
Hydro (8.9%)	15,483	0	(0.0%)
Imports (3.2%)	5,601		
RES (47.7%)	83,167	768	(0.4%)
Crete RES (0.4%)	759	0	(0.0%)
BESS (0.5%)	854	924	(0.5%)
HV Load (0.0%)	0	20,677	(11.9%)
MV Load (0.0%)	0	33,118	(19.0%)
LV Load (0.0%)	0	72,361	(41.5%)
Crete Load (0.0%)	0	8,275	(4.7%)
Pumping (0.0%)	0	440	(0.3%)
Exports		35,512	(20.4%)
Sys.Losses (0.0%)	0	2,316	(1.3%)
D/R Load (0.0%)	0	0	(0.0%)

