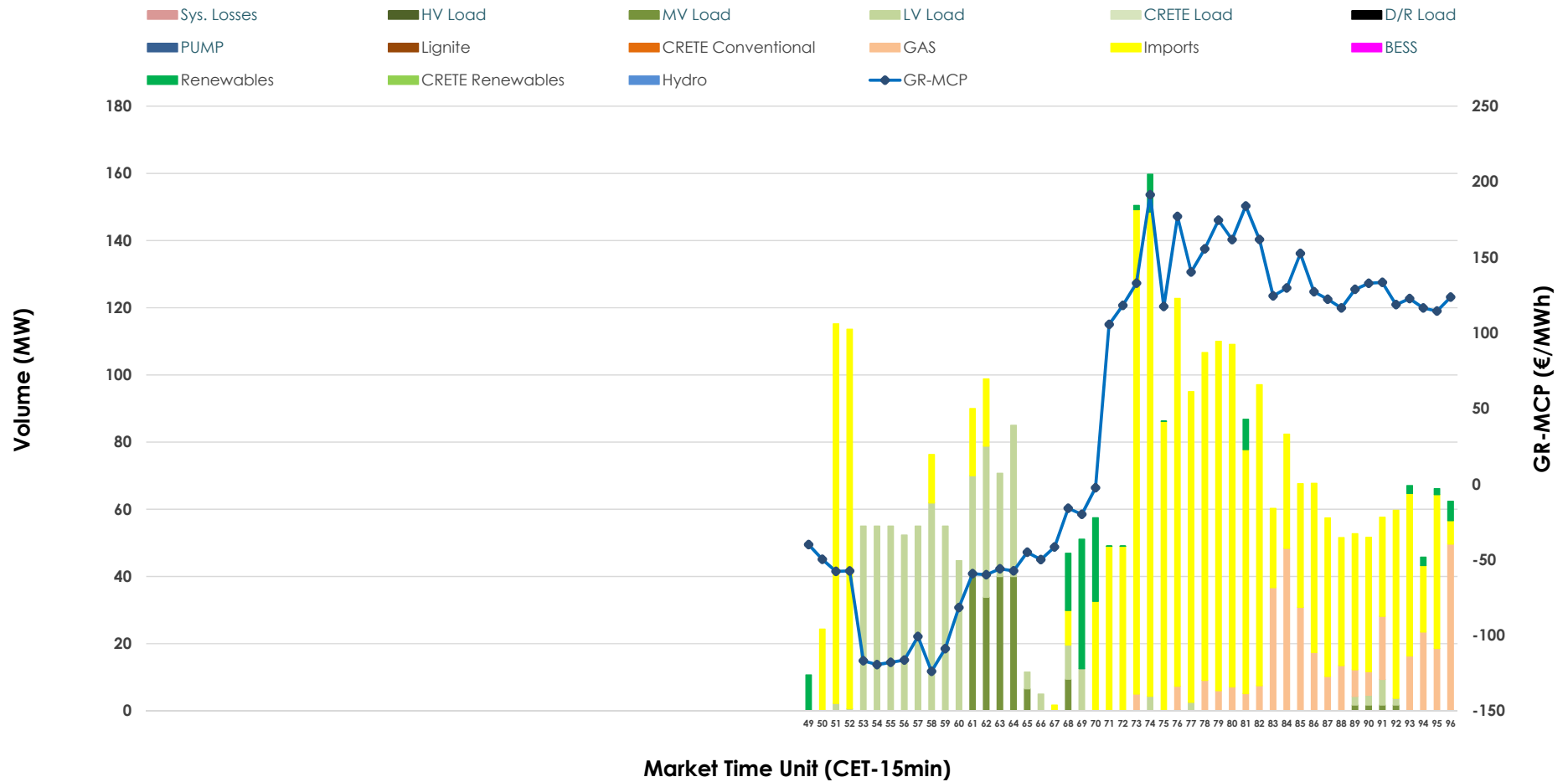


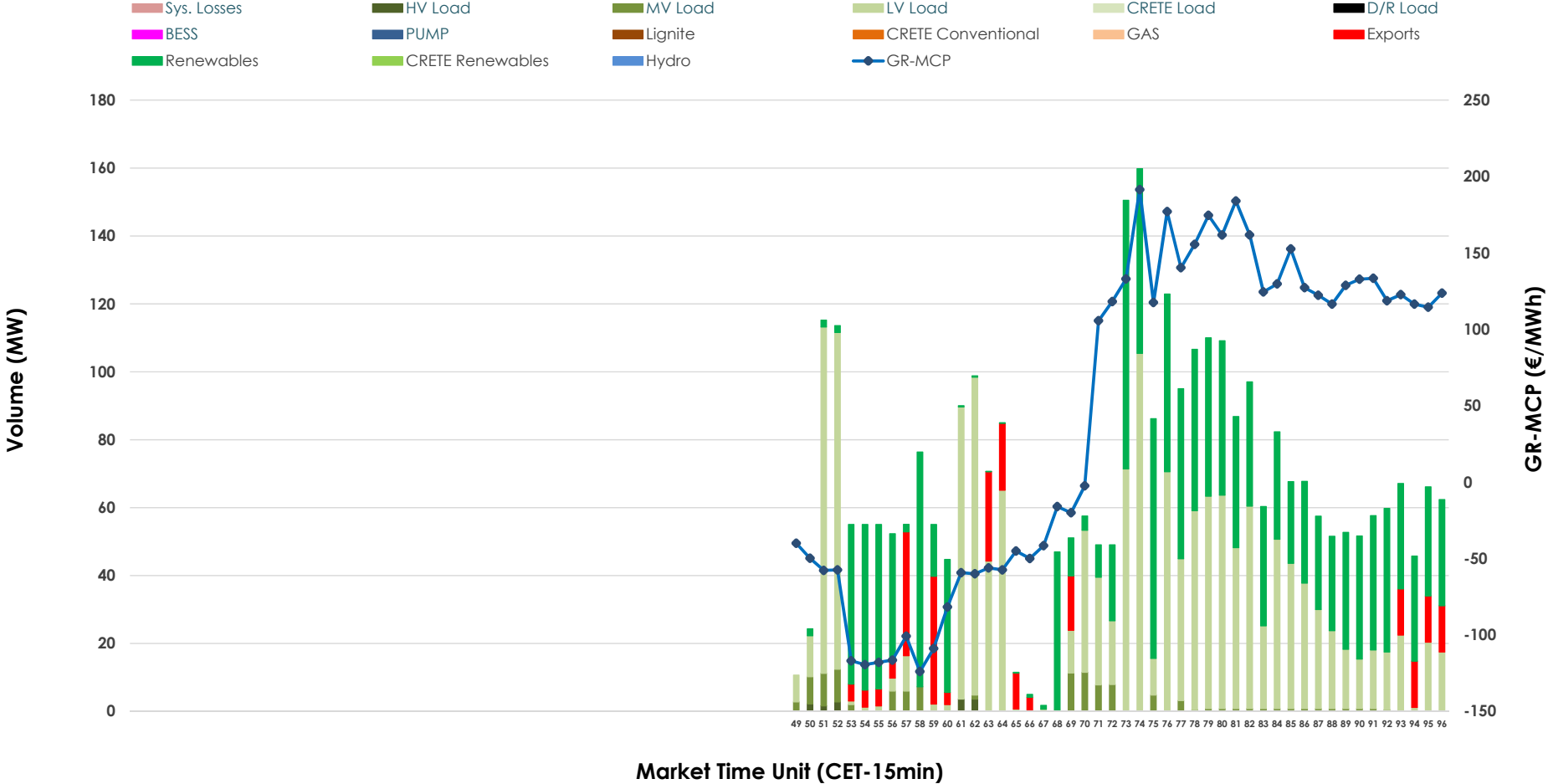


# IDA '3' Market Outlook

06.04.2026 IDA '3' Market - Sell



### 06.04.2026 IDA '3' Market - Buy



### GR Bidding Zone Weekly Figures

Delivery Day	31.03	01.04	02.04	03.04	04.04	05.04	06.04
	↗ 19%		↘ -3%	↘ -65%	↘ -54%	↗ 102%	
<b>Avg.MCP (€/MWh)</b>	147.08	N/M	136.63	132.06	46.59	21.49	43.45
<b>Max.MCP (€/MWh)</b>	225.64	N/M	190.13	203.39	129.90	97.54	191.43
<b>Min.MCP (€/MWh)</b>	93.62	N/M	104.38	59.05	-11.64	-65.92	-123.91
	↘ -22%		↘ -17%	↘ -30%	↘ -69%	↗ 115%	
<b>Tot.Vol(GWh)</b>	1.67	N/M	4.25	3.55	2.49	0.77	1.65

### Trades by Order Type

Delivery Day		31.03	01.04	02.04	03.04	04.04	05.04	06.04	
<b>Ord Price Type</b>		<b>Sell &amp; Buy Trades in (GWh) per Price Type</b>							<b>(%)</b>
<b>PPT</b>	(S)	0.000	0.000	0.000	0.000	0.000	0.000	0.000	0.00%
<b>HBD</b>	(S)	0.673	0.189	0.695	1.245	0.338	0.322	0.322	39.04%
<b>BLK</b>	(S)	0.000	0.000	0.000	0.000	0.000	0.000	0.000	0.00%
<b>CPL</b>	(S)	0.161	1.938	1.080	0.000	0.046	0.503	0.503	60.96%
<b>PPT</b>	(B)	0.000	0.000	0.000	0.000	0.000	0.000	0.000	0.00%
<b>HBD</b>	(B)	0.707	1.640	0.807	0.126	0.200	0.768	0.768	93.08%
<b>BLK</b>	(B)	0.000	0.000	0.000	0.000	0.000	0.000	0.000	0.00%
<b>CPL</b>	(B)	0.127	0.487	0.968	1.120	0.184	0.057	0.057	6.92%
		<b>Sell &amp; Buy Orders Traded per Price Type</b>							<b>(%)</b>
<b>PPT</b>	(S)	0	0	0	0	0	0	0	0.00%
<b>HBD</b>	(S)	169	143	309	206	130	65	65	100.00%
<b>BLK</b>	(S)	0	0	0	0	0	0	0	0.00%
<b>PPT</b>	(B)	0	0	0	0	0	0	0	0.00%
<b>HBD</b>	(B)	280	412	283	112	130	197	197	100.00%
<b>BLK</b>	(B)	0	0	0	0	0	0	0	0.00%

- MCP** Market Clearing Price (€/MWh)
- PPT** Priority Price-Taking
- HBD** Hybrid
- BLK** Block
- CPL** Market Coupling Flow

### Trade's Volume Mix

	Sell - MWh	Buy - MWh	
<b>Lignite</b> (0.0%)	0	0	(0.0%)
<b>Crete Conv.</b> (0.0%)	0	0	(0.0%)
<b>Gas</b> (10.5%)	86	0	(0.0%)
<b>Hydro</b> (0.0%)	0	0	(0.0%)
<b>Imports</b> (61.0%)	503		
<b>RES</b> (3.8%)	31	346	(41.9%)
<b>Crete RES</b> (0.0%)	0	0	(0.0%)
<b>BESS</b> (0.0%)	0	0	(0.0%)
<b>HV Load</b> (0.0%)	0	3	(0.4%)
<b>MV Load</b> (5.3%)	44	28	(3.3%)
<b>LV Load</b> (19.5%)	161	391	(47.4%)
<b>Crete Load</b> (0.0%)	0	0	(0.0%)
<b>Pumping</b> (0.0%)	0	0	(0.0%)
<b>Exports</b>		57	(6.9%)
<b>Sys.Losses</b> (0.0%)	0	0	(0.0%)
<b>D/R Load</b> (0.0%)	0	0	(0.0%)

