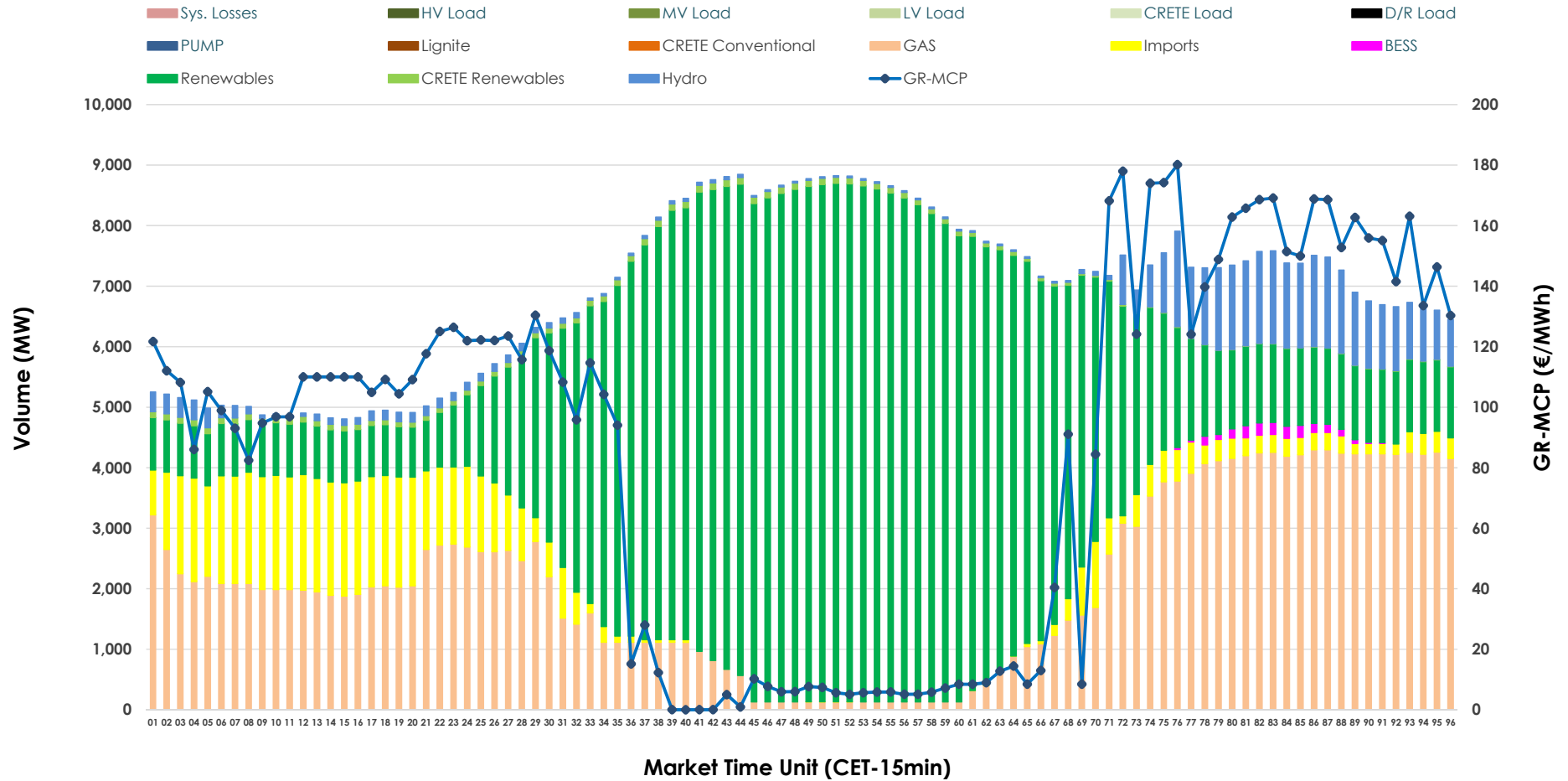


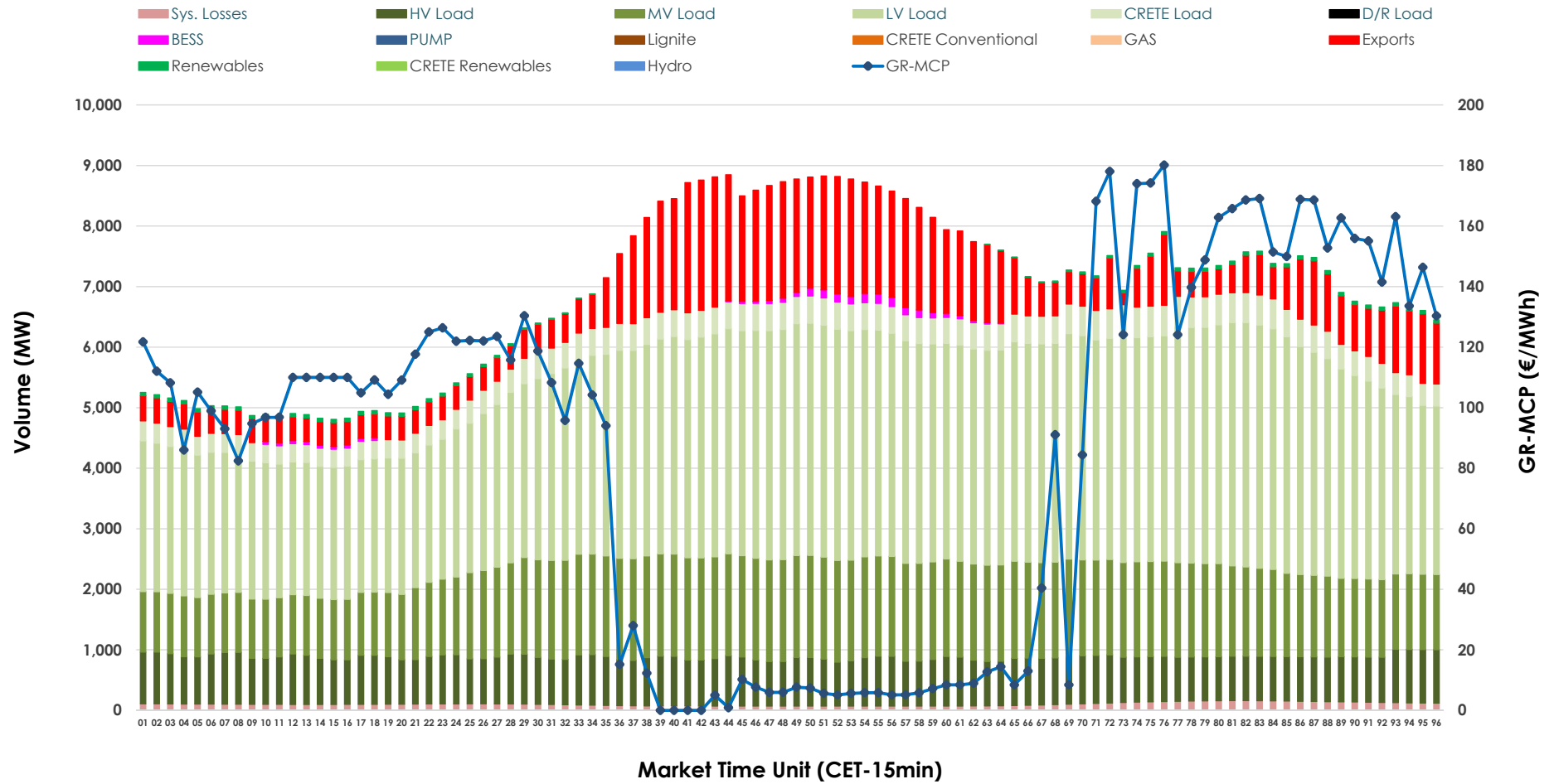


Day-Ahead Market Outlook

15.06.2026 Day-Ahead Market - Sell



15.06.2026 Day-Ahead Market - Buy



GR Bidding Zone Weekly Figures

Delivery Day	09.06	10.06	11.06	12.06	13.06	14.06	15.06
	↗ 20%	↘ -9%	↘ -3%	↗ 16%	↘ -57%	↗ 20%	↗ 45%
Avg.MCP (€/MWh)	114.46	104.15	100.74	116.43	49.69	59.78	86.75
Max.MCP (€/MWh)	221.03	200.90	167.58	171.46	169.10	175.01	180.14
Min.MCP (€/MWh)	-0.01	-0.01	15.37	60.59	-34.00	-10.00	0.00
	↗ 3%	↘ -2%	↘ -2%	↘ -4%	↘ -11%	↘ -10%	↗ 24%
Tot.Vol(GWh)	361.76	354.80	348.94	333.52	297.06	268.05	331.94

Trades by Order Type

Delivery Day		09.06	10.06	11.06	12.06	13.06	14.06	15.06	
Ord Price Type		Sell & Buy Trades in (GWh) per Price Type							(%)
PPT	(S)	65.539	61.558	57.801	57.093	68.037	56.168	56.785	34.21%
HBD	(S)	79.650	77.318	74.310	63.660	57.846	50.363	71.647	43.17%
BLK	(S)	33.822	37.882	36.463	32.591	14.016	16.742	27.719	16.70%
CPL	(S)	1.870	0.639	5.898	13.414	8.628	10.751	9.821	5.92%
PPT	(B)	15.928	16.475	16.757	16.583	16.499	15.914	16.480	9.93%
HBD	(B)	146.848	145.565	147.692	144.354	123.659	113.815	134.034	80.76%
BLK	(B)	0.000	0.000	0.000	0.000	0.000	0.000	0.000	0.00%
CPL	(B)	18.105	15.358	10.022	5.821	8.370	4.295	15.459	9.31%
		Sell & Buy Orders Traded per Price Type							(%)
PPT	(S)	1689	1649	1662	1672	1583	1528	1498	30.10%
HBD	(S)	3724	3651	3597	3357	2561	2705	3465	69.62%
BLK	(S)	18	17	15	16	8	13	14	0.28%
PPT	(B)	2379	2333	2348	2344	2406	2364	2351	38.19%
HBD	(B)	3938	4000	3995	3843	4001	3902	3805	61.81%
BLK	(B)	0	0	0	0	0	0	0	0.00%

- MCP** Market Clearing Price (€/MWh)
- PPT** Priority Price-Taking
- HBD** Hybrid
- BLK** Block
- CPL** Market Coupling Flow

Trade's Volume Mix

	Sell - MWh	Buy - MWh	
Lignite (0.0%)	0	0	(0.0%)
Crete Conv. (0.0%)	0	0	(0.0%)
Gas (30.1%)	50,002	0	(0.0%)
Hydro (5.4%)	8,884	0	(0.0%)
Imports (8.8%)	14,563		
RES (54.5%)	90,478	740	(0.4%)
Crete RES (0.9%)	1,559	0	(0.0%)
BESS (0.3%)	486	554	(0.3%)
HV Load (0.0%)	0	18,723	(11.3%)
MV Load (0.0%)	0	34,246	(20.6%)
LV Load (0.0%)	0	77,231	(46.5%)
Crete Load (0.0%)	0	9,887	(6.0%)
Pumping (0.0%)	0	0	(0.0%)
Exports		22,114	(13.3%)
Sys.Losses (0.0%)	0	2,478	(1.5%)
D/R Load (0.0%)	0	0	(0.0%)

