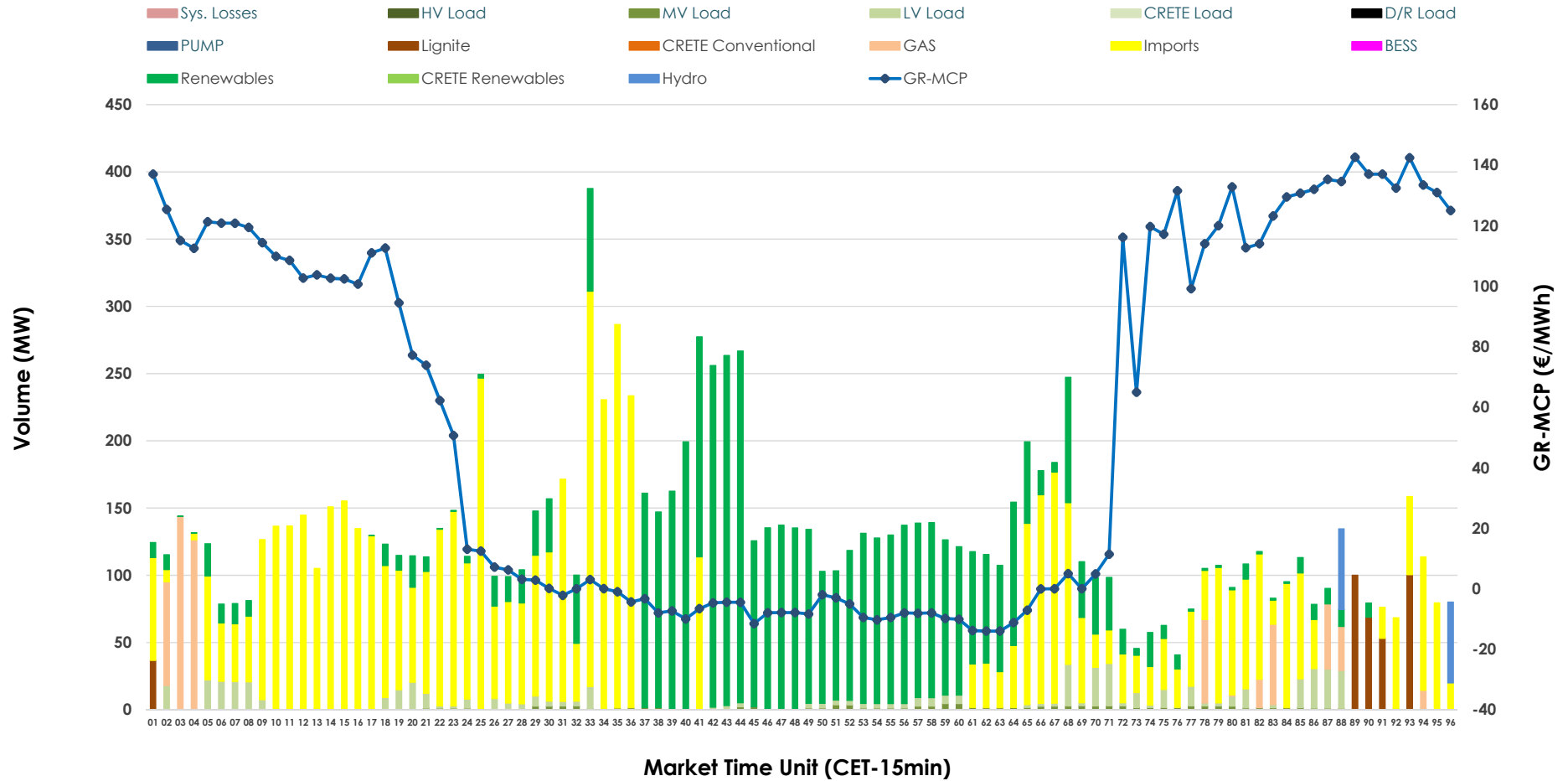


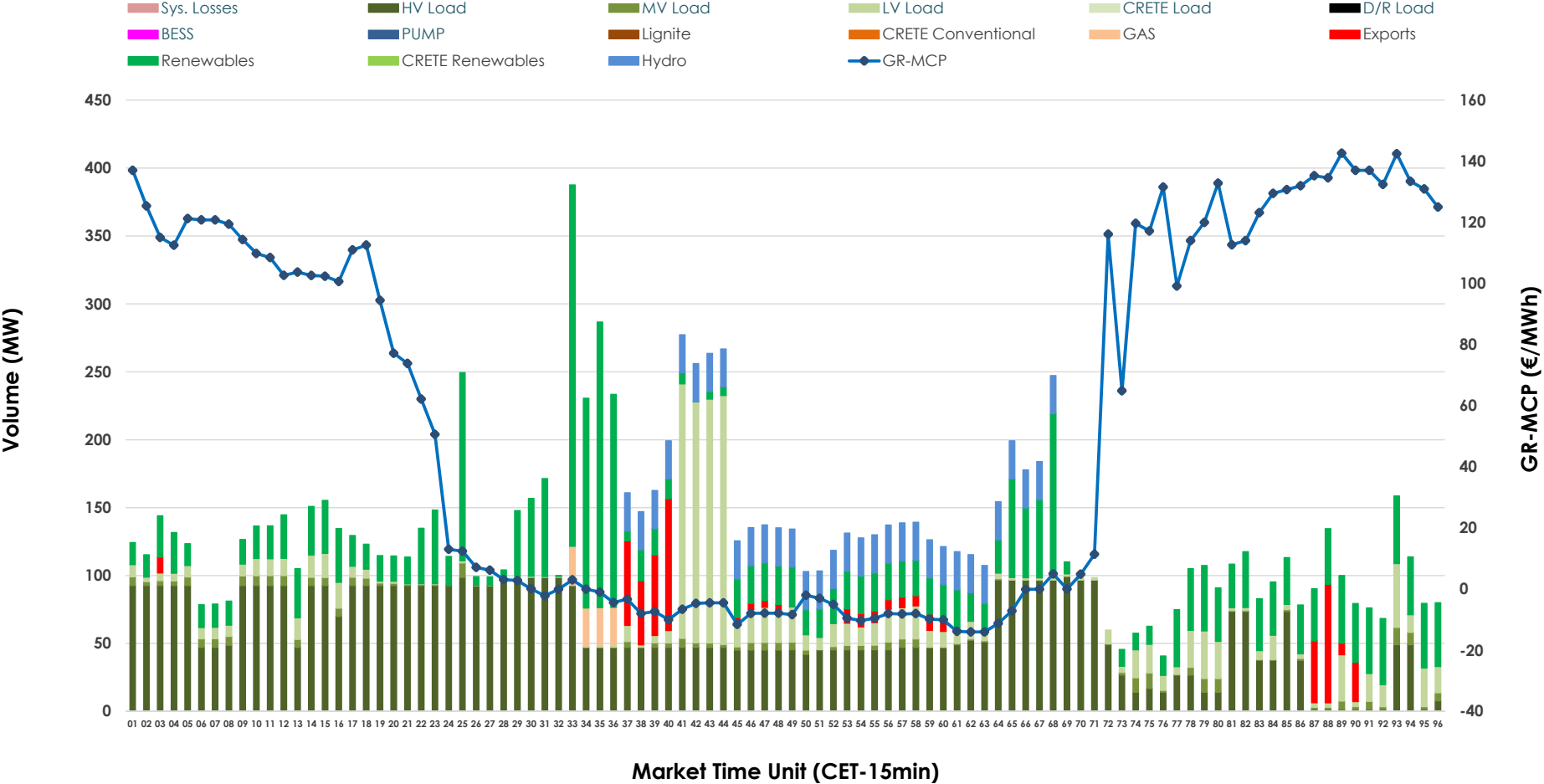


# IDA '1' Market Outlook

07.06.2026 IDA '1' Market - Sell



### 07.06.2026 IDA '1' Market - Buy



### GR Bidding Zone Weekly Figures

Delivery Day	01.06	02.06	03.06	04.06	05.06	06.06	07.06
	↗ 13%	↘ -2%	↘ -12%	↗ 4%	↗ 31%	↘ -30%	↘ -31%
<b>Avg.MCP (€/MWh)</b>	96.84	95.04	83.58	86.77	114.04	80.04	55.54
<b>Max.MCP (€/MWh)</b>	184.62	173.10	154.37	219.59	187.06	156.50	142.61
<b>Min.MCP (€/MWh)</b>	-5.61	-9.72	-10.09	1.23	29.00	-11.00	-14.00
	↘ -4%	↘ -27%	↗ 23%	↘ -34%	↗ 23%	↗ 15%	↗ 30%
<b>Tot.Vol(GWh)</b>	5.96	4.35	5.34	3.50	4.29	4.93	6.42

### Trades by Order Type

Delivery Day		01.06	02.06	03.06	04.06	05.06	06.06	07.06	
<b>Ord Price Type</b>		<b>Sell &amp; Buy Trades in (GWh) per Price Type</b>							<b>(%)</b>
<b>PPT</b>	(S)	0.000	0.000	0.000	0.000	0.000	0.000	0.000	0.00%
<b>HBD</b>	(S)	2.320	1.893	2.333	0.551	1.285	2.180	1.634	50.94%
<b>BLK</b>	(S)	0.000	0.000	0.000	0.000	0.000	0.000	0.000	0.00%
<b>CPL</b>	(S)	0.658	0.280	0.338	1.200	0.862	0.286	1.574	49.06%
<b>PPT</b>	(B)	0.000	0.000	0.000	0.000	0.000	0.000	0.000	0.00%
<b>HBD</b>	(B)	2.610	1.808	1.998	1.626	1.655	1.325	3.074	95.81%
<b>BLK</b>	(B)	0.000	0.000	0.000	0.000	0.000	0.000	0.000	0.00%
<b>CPL</b>	(B)	0.367	0.365	0.673	0.125	0.492	1.142	0.134	4.19%
		<b>Sell &amp; Buy Orders Traded per Price Type</b>							<b>(%)</b>
<b>PPT</b>	(S)	0	0	0	0	0	0	0	0.00%
<b>HBD</b>	(S)	201	123	466	216	208	209	202	100.00%
<b>BLK</b>	(S)	0	0	0	0	0	0	0	0.00%
<b>PPT</b>	(B)	0	0	0	0	0	0	0	0.00%
<b>HBD</b>	(B)	707	870	1055	850	889	797	731	100.00%
<b>BLK</b>	(B)	0	0	0	0	0	0	0	0.00%

- MCP** Market Clearing Price (€/MWh)
- PPT** Priority Price-Taking
- HBD** Hybrid
- BLK** Block
- CPL** Market Coupling Flow

### Trade's Volume Mix

	Sell - MWh	Buy - MWh	
<b>Lignite</b> (2.8%)	89	0	(0.0%)
<b>Crete Conv.</b> (0.0%)	0	0	(0.0%)
<b>Gas</b> (4.6%)	146	28	(0.9%)
<b>Hydro</b> (0.9%)	30	224	(7.0%)
<b>Imports</b> (49.1%)	1,574		
<b>RES</b> (37.3%)	1,196	892	(27.8%)
<b>Crete RES</b> (0.0%)	0	0	(0.0%)
<b>BESS</b> (0.0%)	0	0	(0.0%)
<b>HV Load</b> (0.0%)	0	1,429	(44.6%)
<b>MV Load</b> (0.9%)	29	79	(2.5%)
<b>LV Load</b> (4.5%)	143	421	(13.1%)
<b>Crete Load</b> (0.0%)	0	0	(0.0%)
<b>Pumping</b> (0.0%)	0	0	(0.0%)
<b>Exports</b>		134	(4.2%)
<b>Sys.Losses</b> (0.0%)	0	0	(0.0%)
<b>D/R Load</b> (0.0%)	0	0	(0.0%)

