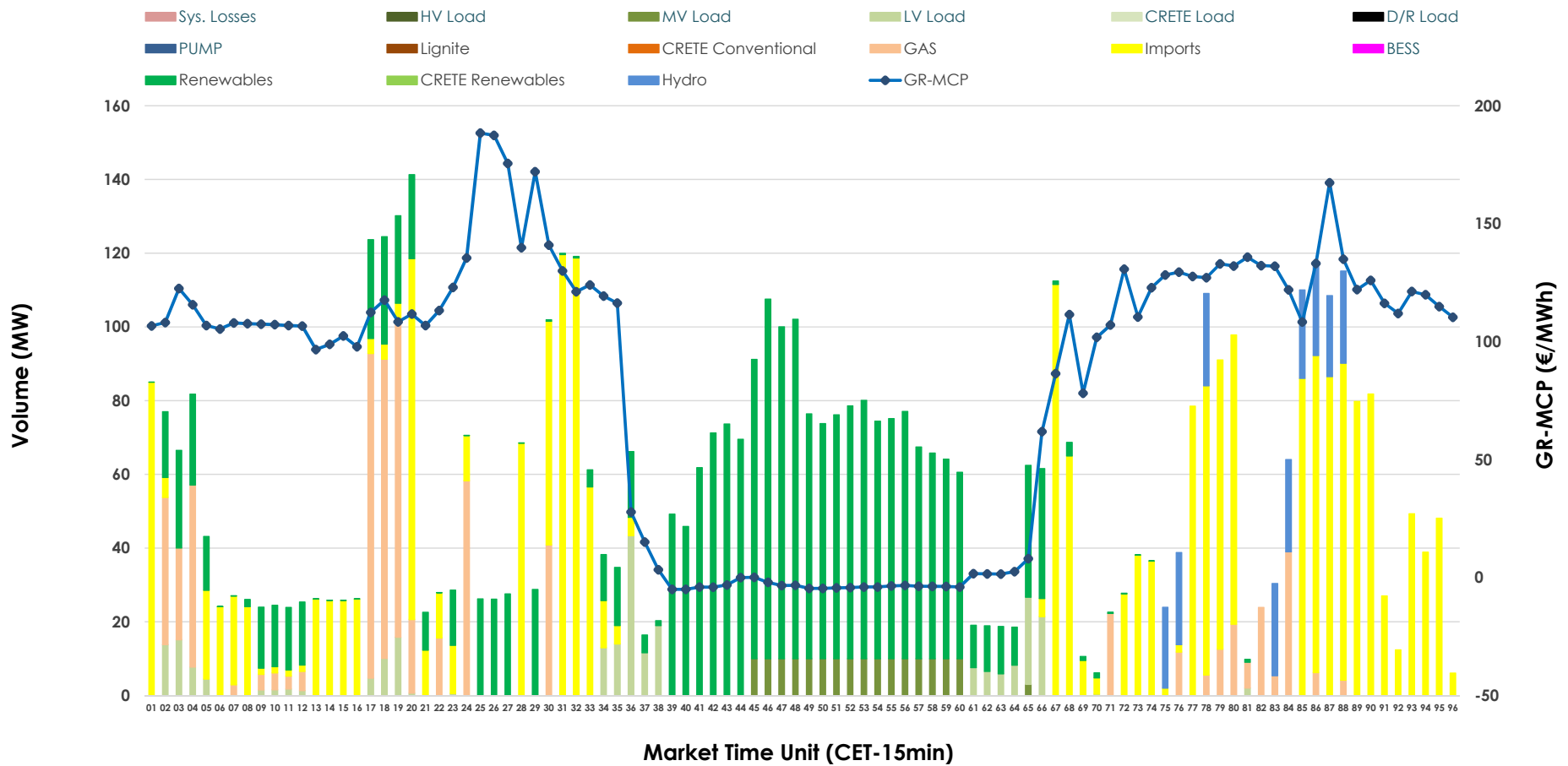


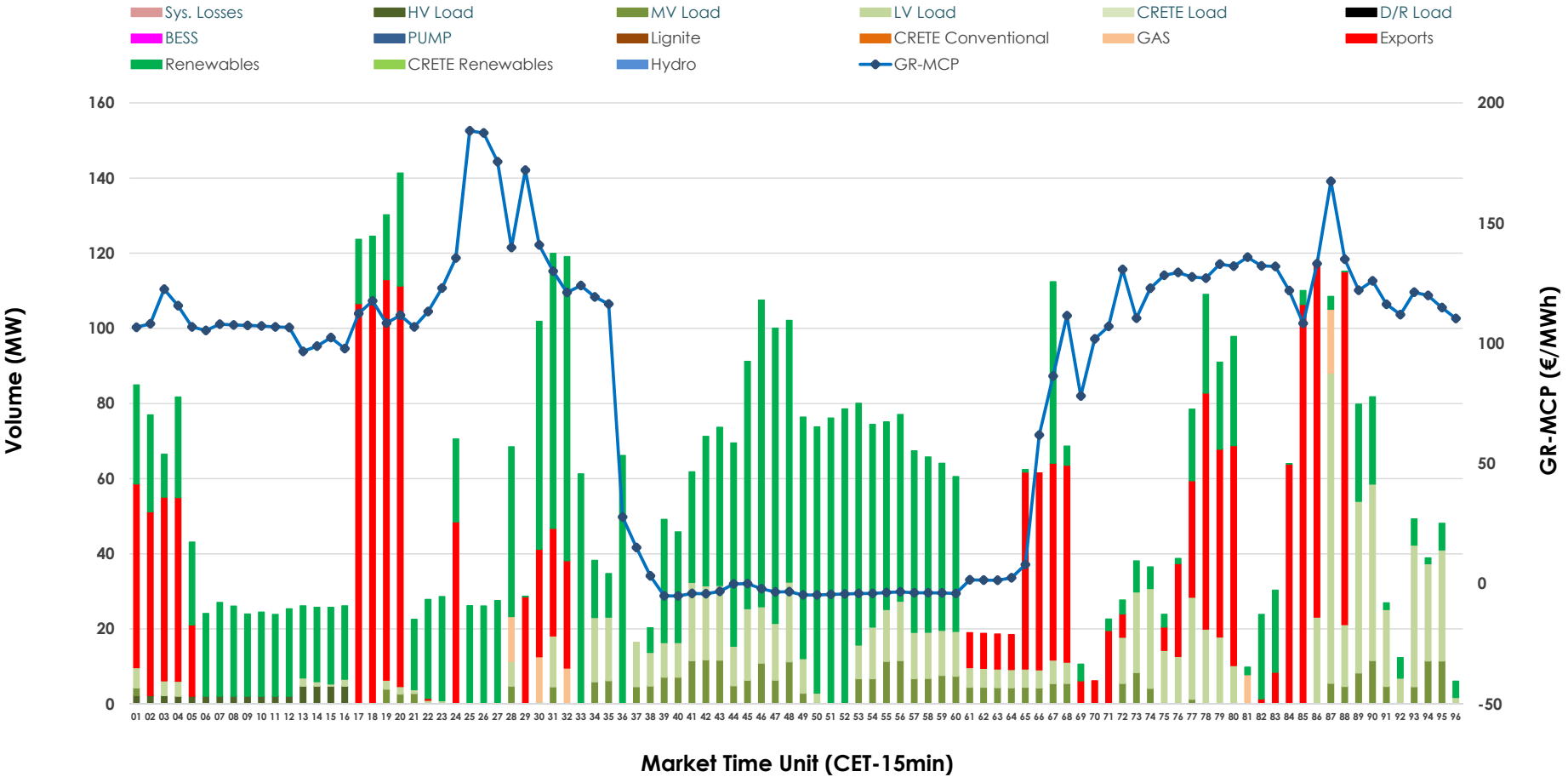


# IDA '2' Market Outlook

20.04.2026 IDA '2' Market - Sell



20.04.2026 IDA '2' Market - Buy



### GR Bidding Zone Weekly Figures

Delivery Day	14.04	15.04	16.04	17.04	18.04	19.04	20.04
	↑ 41%	↔ -8%			↘ -16%	↗ 10%	↗ 20%
<b>Avg.MCP (€/MWh)</b>	138.59	126.89	N/M	73.93	62.35	68.79	82.59
<b>Max.MCP (€/MWh)</b>	261.33	188.32	N/M	175.78	143.35	157.98	188.41
<b>Min.MCP (€/MWh)</b>	86.61	82.00	N/M	-13.57	-15.00	-15.00	-5.00
	↓ -51%	↑ 167%			↑ 43%	↘ -12%	↓ -39%
<b>Tot.Vol(GWh)</b>	2.78	7.43	N/M	3.62	5.16	4.57	2.79

### Trades by Order Type

Delivery Day		14.04	15.04	16.04	17.04	18.04	19.04	20.04	
<b>Ord Price Type</b>		<b>Sell &amp; Buy Trades in (GWh) per Price Type</b>							<b>(%)</b>
<b>PPT</b>	(S)	0.000	0.000		0.000	0.000	0.000	0.000	0.00%
<b>HBD</b>	(S)	0.620	1.018		1.163	1.881	0.822	0.843	60.44%
<b>BLK</b>	(S)	0.000	0.000		0.000	0.000	0.000	0.000	0.00%
<b>CPL</b>	(S)	0.772	2.700		0.645	0.701	1.463	0.552	39.56%
<b>PPT</b>	(B)	0.000	0.000		0.000	0.000	0.000	0.000	0.00%
<b>HBD</b>	(B)	1.141	1.789		0.995	2.486	0.746	0.973	69.71%
<b>BLK</b>	(B)	0.000	0.000		0.000	0.000	0.000	0.000	0.00%
<b>CPL</b>	(B)	0.252	1.929		0.813	0.096	1.539	0.423	30.29%
		<b>Sell &amp; Buy Orders Traded per Price Type</b>							<b>(%)</b>
<b>PPT</b>	(S)	0	0		0	0	0	0	0.00%
<b>HBD</b>	(S)	197	188		234	223	212	168	100.00%
<b>BLK</b>	(S)	0	0		0	0	0	0	0.00%
<b>PPT</b>	(B)	0	0		0	0	0	0	0.00%
<b>HBD</b>	(B)	369	479		335	471	416	520	100.00%
<b>BLK</b>	(B)	0	0		0	0	0	0	0.00%

**MCP** Market Clearing Price (€/MWh)  
**PPT** Priority Price-Taking  
**HBD** Hybrid  
**BLK** Block  
**CPL** Market Coupling Flow

### Trade's Volume Mix

	Sell - MWh	Buy - MWh	
<b>Lignite</b> (0.0%)	0	0	(0.0%)
<b>Crete Conv.</b> (0.0%)	0	0	(0.0%)
<b>Gas</b> (12.2%)	171	15	(1.0%)
<b>Hydro</b> (3.9%)	54	0	(0.0%)
<b>Imports</b> (39.6%)	552		
<b>RES</b> (36.8%)	514	638	(45.7%)
<b>Crete RES</b> (0.0%)	0	0	(0.0%)
<b>BESS</b> (0.0%)	0	0	(0.0%)
<b>HV Load</b> (0.0%)	0	11	(0.8%)
<b>MV Load</b> (2.9%)	41	80	(5.7%)
<b>LV Load</b> (4.6%)	64	229	(16.4%)
<b>Crete Load</b> (0.0%)	0	0	(0.0%)
<b>Pumping</b> (0.0%)	0	0	(0.0%)
<b>Exports</b>		423	(30.3%)
<b>Sys.Losses</b> (0.0%)	0	0	(0.0%)
<b>D/R Load</b> (0.0%)	0	0	(0.0%)

