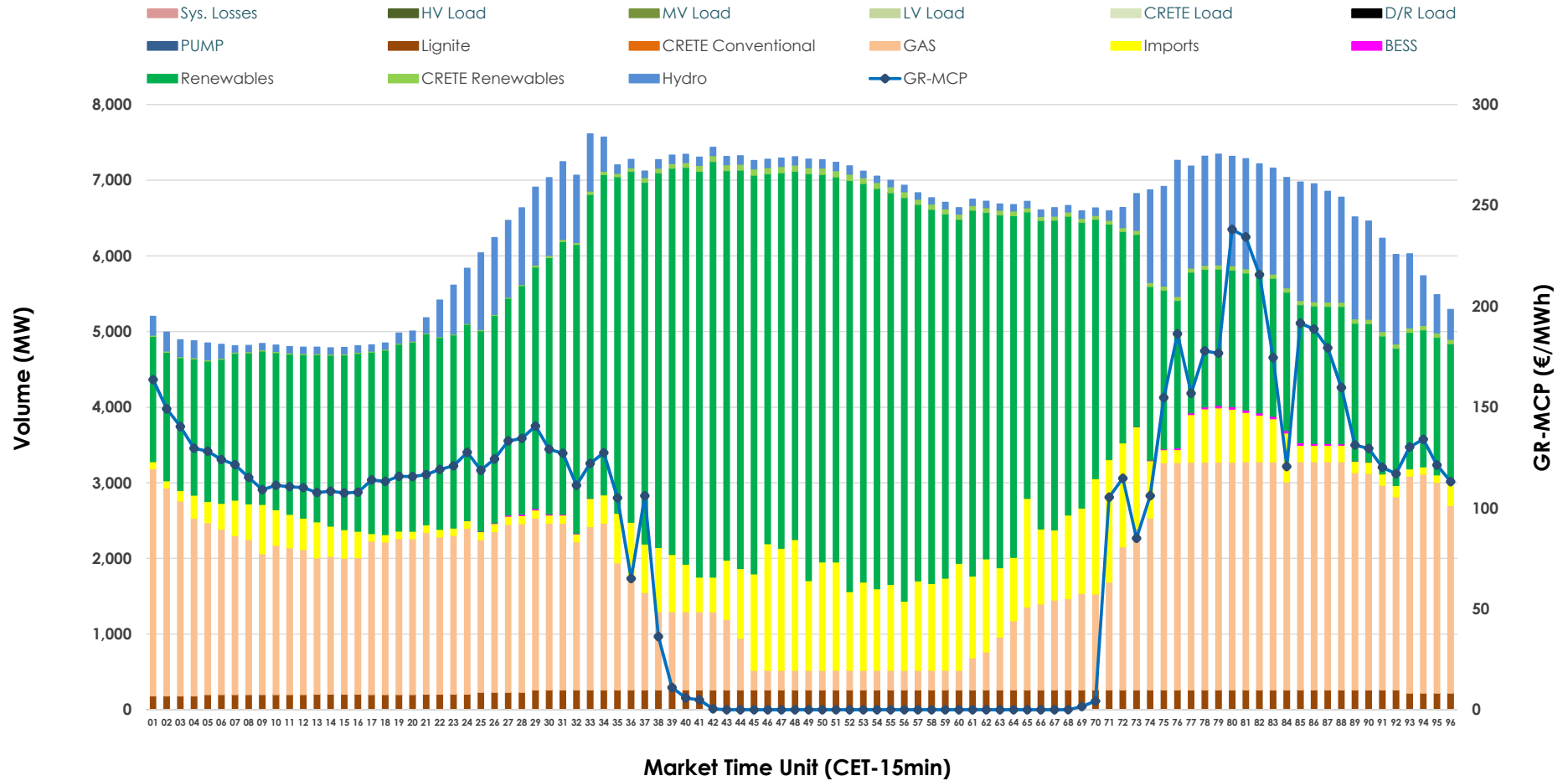


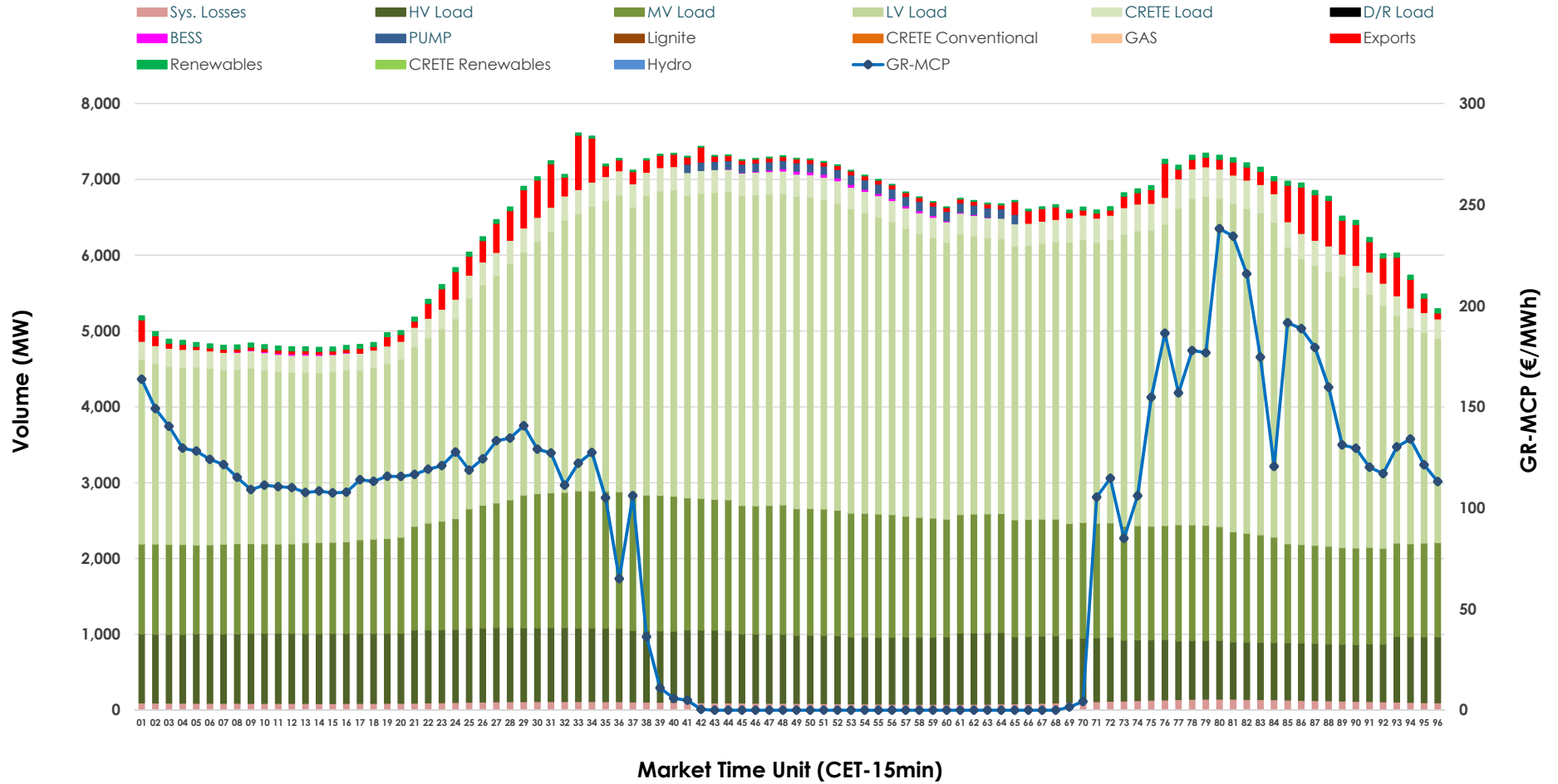


# Day-Ahead Market Outlook

## 23.04.2026 Day-Ahead Market - Sell



### 23.04.2026 Day-Ahead Market - Buy



### GR Bidding Zone Weekly Figures

Delivery Day	17.04	18.04	19.04	20.04	21.04	22.04	23.04
	👇 -16%	👇 -13%	👆 6%	👆 16%	➡ 0%	👆 38%	👇 -23%
<b>Avg.MCP (€/MWh)</b>	77.40	67.33	71.68	83.41	83.07	114.50	88.12
<b>Max.MCP (€/MWh)</b>	167.98	151.85	166.45	179.47	175.83	292.39	238.11
<b>Min.MCP (€/MWh)</b>	-0.10	-9.50	-8.30	-0.10	-0.01	9.20	0.00
	👇 -4%	👇 -8%	👇 -11%	👆 12%	👆 3%	👇 -5%	👆 8%
<b>Tot.Vol(GWh)</b>	318.07	292.47	260.85	293.37	302.62	286.00	307.65

### Trades by Order Type

Delivery Day		17.04	18.04	19.04	20.04	21.04	22.04	23.04	
<b>Ord Price Type</b>		<b>Sell &amp; Buy Trades in (GWh) per Price Type</b>							<b>(%)</b>
<b>PPT</b>	(S)	74.510	71.097	54.859	50.668	56.261	52.662	53.859	35.01%
<b>HBD</b>	(S)	66.668	58.837	50.588	64.774	64.943	54.230	64.423	41.88%
<b>BLK</b>	(S)	17.787	15.650	19.613	21.500	24.410	26.046	27.200	17.68%
<b>CPL</b>	(S)	0.070	0.653	5.365	9.746	5.696	10.061	8.343	5.42%
<b>PPT</b>	(B)	12.831	12.306	11.769	12.952	12.970	12.705	12.529	8.14%
<b>HBD</b>	(B)	130.557	119.439	111.146	124.208	122.287	123.424	138.995	90.36%
<b>BLK</b>	(B)	0.000	0.000	0.000	0.000	0.000	0.000	0.000	0.00%
<b>CPL</b>	(B)	15.647	14.493	7.510	9.527	16.052	6.871	2.301	1.50%
		<b>Sell &amp; Buy Orders Traded per Price Type</b>							<b>(%)</b>
<b>PPT</b>	(S)	1585	1502	1522	1582	1687	1670	1645	35.20%
<b>HBD</b>	(S)	2550	2380	2585	2893	2905	3209	3014	64.50%
<b>BLK</b>	(S)	10	8	12	8	11	11	14	0.30%
<b>PPT</b>	(B)	2363	2270	2258	2318	2312	2317	2217	32.85%
<b>HBD</b>	(B)	4224	4214	4123	4138	4183	4081	4532	67.15%
<b>BLK</b>	(B)	0	0	0	0	0	0	0	0.00%

- MCP** Market Clearing Price (€/MWh)
- PPT** Priority Price-Taking
- HBD** Hybrid
- BLK** Block
- CPL** Market Coupling Flow

### Trade's Volume Mix

		Sell - MWh	Buy - MWh	
<b>Lignite</b>	(3.8%)	5,853	0	(0.0%)
<b>Crete Conv.</b>	(0.0%)	0	0	(0.0%)
<b>Gas</b>	(27.5%)	42,295	0	(0.0%)
<b>Hydro</b>	(7.7%)	11,900	0	(0.0%)
<b>Imports</b>	(9.7%)	14,933		
<b>RES</b>	(50.4%)	77,591	884	(0.6%)
<b>Crete RES</b>	(0.7%)	1,133	0	(0.0%)
<b>BESS</b>	(0.1%)	121	142	(0.1%)
<b>HV Load</b>	(0.0%)	0	21,303	(13.8%)
<b>MV Load</b>	(0.0%)	0	35,589	(23.1%)
<b>LV Load</b>	(0.0%)	0	81,359	(52.9%)
<b>Crete Load</b>	(0.0%)	0	7,012	(4.6%)
<b>Pumping</b>	(0.0%)	0	736	(0.5%)
<b>Exports</b>			4,300	(2.8%)
<b>Sys.Losses</b>	(0.0%)	0	2,500	(1.6%)
<b>D/R Load</b>	(0.0%)	0	0	(0.0%)

