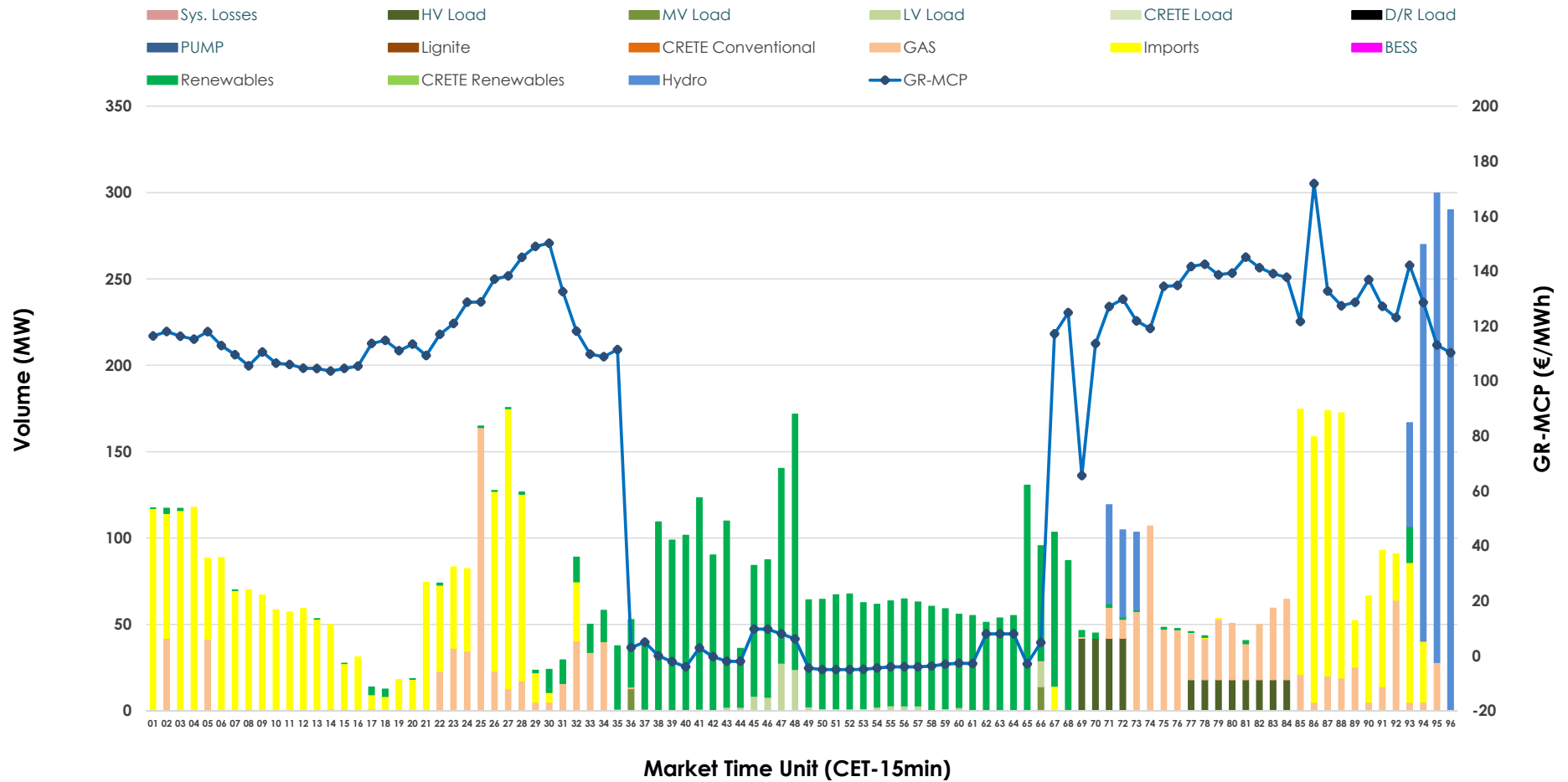


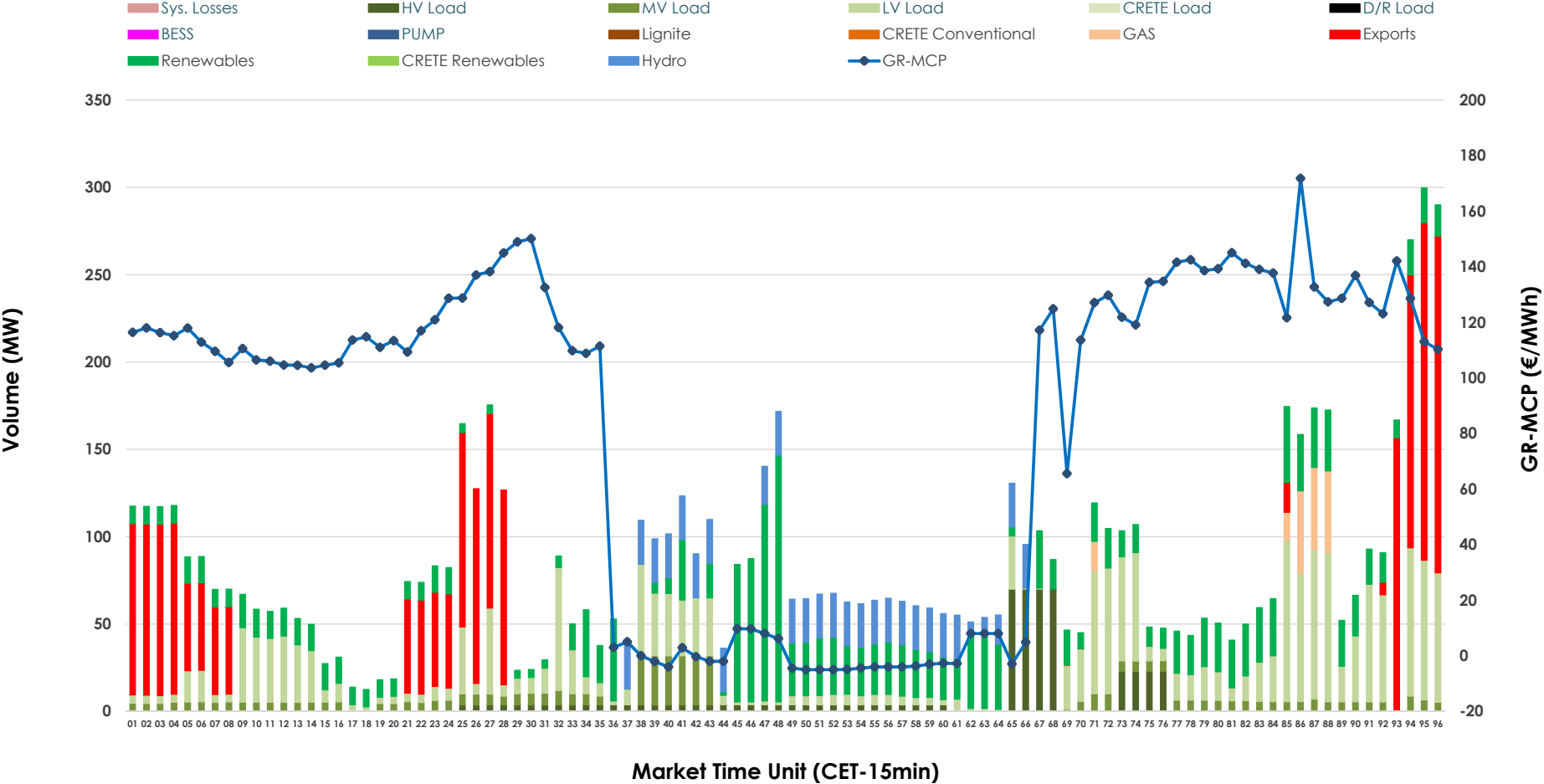


IDA '1' Market Outlook

21.04.2026 IDA '1' Market - Sell



21.04.2026 IDA '1' Market - Buy



GR Bidding Zone Weekly Figures

Delivery Day	15.04	16.04	17.04	18.04	19.04	20.04	21.04
	👇 -7%		👇 -14%	👆 13%	👆 15%	👆 1%	
Avg.MCP (€/MWh)	124.20	N/M	74.62	63.84	72.08	82.77	83.33
Max.MCP (€/MWh)	172.06	N/M	175.68	148.61	174.32	179.47	171.83
Min.MCP (€/MWh)	65.70	N/M	-18.65	-22.01	-10.00	-1.99	-4.99
			👆 13%	👇 -3%	👇 -55%	👆 139%	
Tot.Vol(GWh)	N/M	N/M	3.45	3.88	3.77	1.71	4.07

Trades by Order Type

Delivery Day		15.04	16.04	17.04	18.04	19.04	20.04	21.04	
Ord Price Type		Sell & Buy Trades in (GWh) per Price Type							(%)
PPT	(S)	0.000		0.000	0.000	0.000	0.000	0.000	0.00%
HBD	(S)	0.000		1.172	1.017	0.797	0.522	1.349	66.31%
BLK	(S)	0.000		0.000	0.000	0.000	0.000	0.000	0.00%
CPL	(S)	0.000		0.554	0.925	1.090	0.331	0.685	33.69%
PPT	(B)	0.000		0.000	0.000	0.000	0.000	0.000	0.00%
HBD	(B)	0.000		1.314	1.399	0.851	0.653	1.540	75.71%
BLK	(B)	0.000		0.000	0.000	0.000	0.000	0.000	0.00%
CPL	(B)	0.000		0.411	0.543	1.036	0.200	0.494	24.29%
		Sell & Buy Orders Traded per Price Type							(%)
PPT	(S)	0		0	0	0	0	0	0.00%
HBD	(S)	130		211	158	173	148	198	100.00%
BLK	(S)	0		0	0	0	0	0	0.00%
PPT	(B)	0		0	0	0	0	0	0.00%
HBD	(B)	793		634	880	512	538	606	100.00%
BLK	(B)	0		0	0	0	0	0	0.00%

- MCP** Market Clearing Price (€/MWh)
- PPT** Priority Price-Taking
- HBD** Hybrid
- BLK** Block
- CPL** Market Coupling Flow

Trade's Volume Mix

		Sell - MWh		Buy - MWh	
Lignite	(0.0%)	0	0	0	(0.0%)
Crete Conv.	(0.0%)	0	0	0	(0.0%)
Gas	(16.0%)	326	44		(2.1%)
Hydro	(12.3%)	251	163		(8.0%)
Imports	(33.7%)	685			
RES	(32.5%)	661	535		(26.3%)
Crete RES	(0.0%)	0	0		(0.0%)
BESS	(0.0%)	0	0		(0.0%)
HV Load	(3.8%)	78	127		(6.2%)
MV Load	(0.3%)	7	129		(6.4%)
LV Load	(1.3%)	27	542		(26.6%)
Crete Load	(0.0%)	0	0		(0.0%)
Pumping	(0.0%)	0	0		(0.0%)
Exports			494		(24.3%)
Sys.Losses	(0.0%)	0	0		(0.0%)
D/R Load	(0.0%)	0	0		(0.0%)

