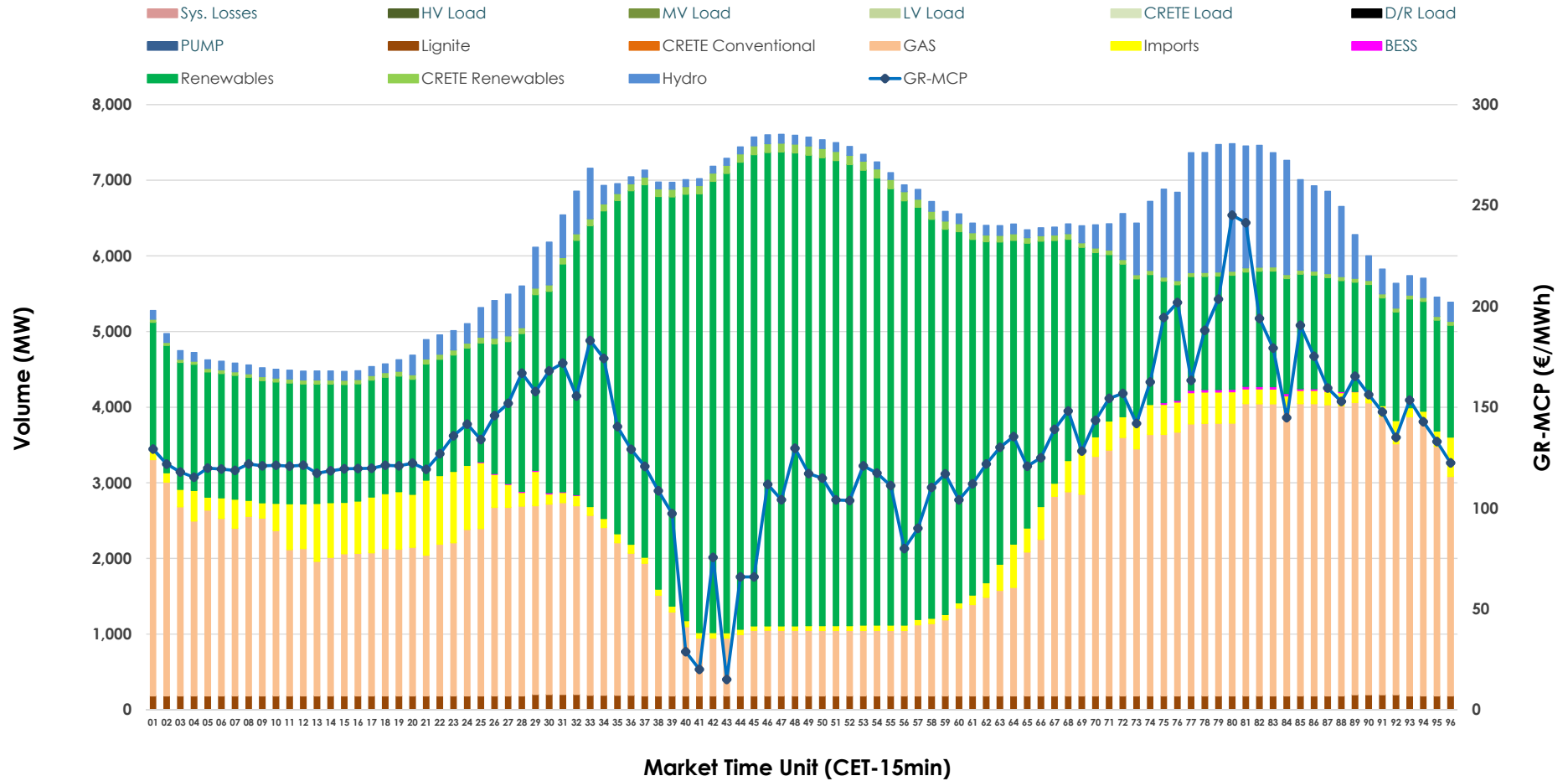


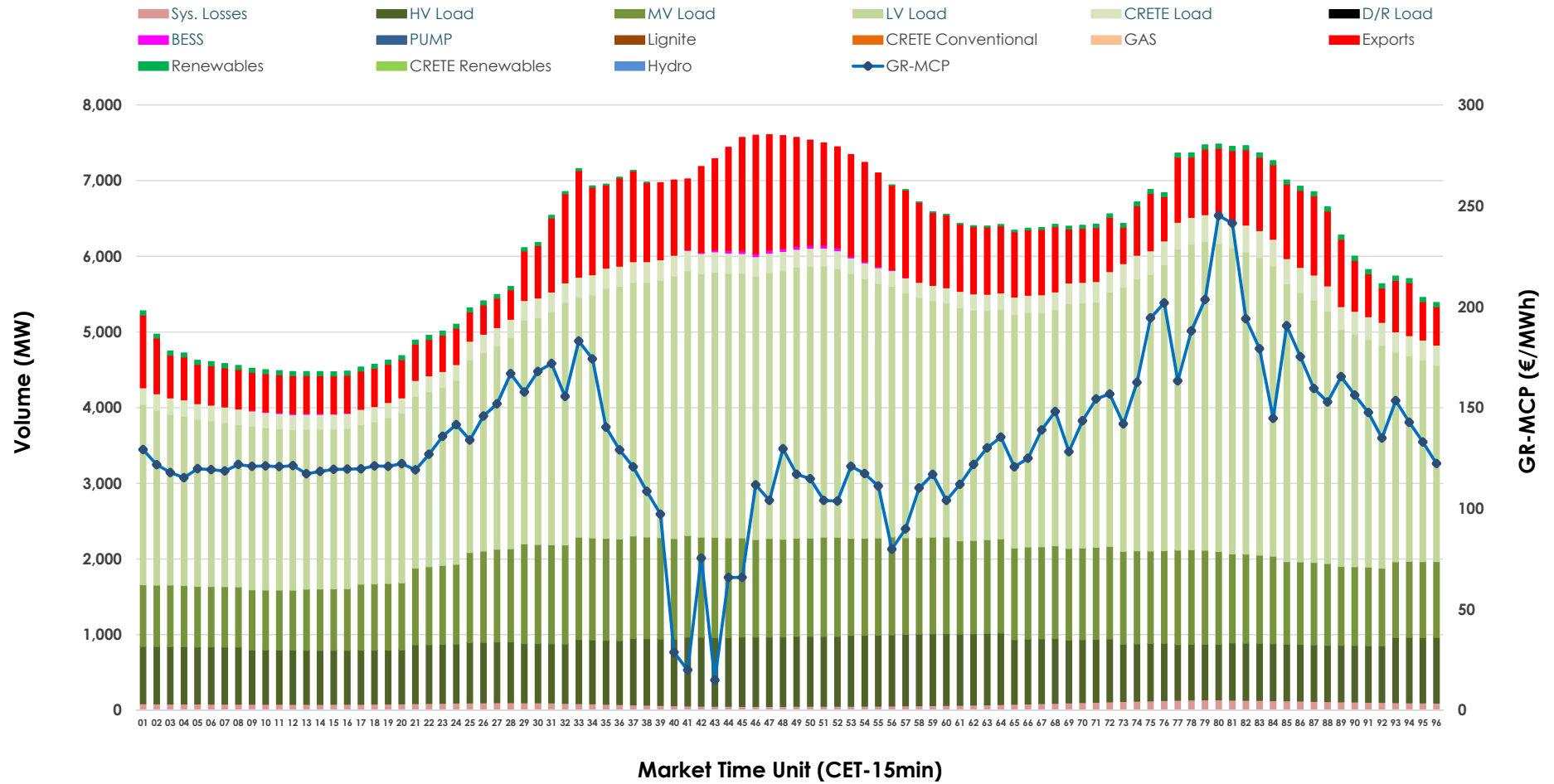


Day-Ahead Market Outlook

14.04.2026 Day-Ahead Market - Sell



14.04.2026 Day-Ahead Market - Buy



GR Bidding Zone Weekly Figures

Delivery Day	08.04	09.04	10.04	11.04	12.04	13.04	14.04
	👇 -6%	👈 17%	👈 1%	👇 -8%	👇 -9%	👈 13%	👈 47%
Avg.MCP (€/MWh)	80.41	94.31	95.30	87.39	79.79	90.06	132.81
Max.MCP (€/MWh)	188.91	186.55	195.45	187.36	157.05	167.43	245.16
Min.MCP (€/MWh)	-10.00	-0.20	-11.00	0.00	-0.41	0.00	15.01
	👇 -3%	👈 0%	👇 -5%	👇 -16%	👇 -4%	👈 9%	👈 17%
Tot.Vol(GWh)	308.22	307.58	293.32	245.55	234.70	254.95	298.65

Trades by Order Type

Delivery Day		08.04	09.04	10.04	11.04	12.04	13.04	14.04	
Ord Price Type		Sell & Buy Trades in (GWh) per Price Type							(%)
PPT	(S)	57.974	46.078	45.843	36.771	39.180	44.572	44.451	29.77%
HBD	(S)	65.356	66.565	63.588	51.590	49.183	54.680	66.771	44.71%
BLK	(S)	23.861	29.612	27.799	23.858	17.179	21.227	33.965	22.75%
CPL	(S)	6.920	11.536	9.432	10.557	11.806	6.996	4.140	2.77%
PPT	(B)	14.696	14.403	14.353	13.243	12.221	12.074	12.075	8.09%
HBD	(B)	129.253	128.131	117.012	106.422	96.846	104.111	127.172	85.16%
BLK	(B)	0.000	0.000	0.000	0.000	0.000	0.000	0.000	0.00%
CPL	(B)	10.162	11.257	15.297	3.111	8.282	11.289	10.080	6.75%
		Sell & Buy Orders Traded per Price Type							(%)
PPT	(S)	1471	1484	1489	1463	1465	1461	1495	31.52%
HBD	(S)	2687	3007	2818	2888	2576	2768	3229	68.08%
BLK	(S)	10	14	13	12	12	13	19	0.40%
PPT	(B)	2364	2345	2358	2369	2374	2349	2309	36.10%
HBD	(B)	4113	4014	4151	4083	4193	4291	4088	63.90%
BLK	(B)	0	0	0	0	0	0	0	0.00%

- MCP** Market Clearing Price (€/MWh)
- PPT** Priority Price-Taking
- HBD** Hybrid
- BLK** Block
- CPL** Market Coupling Flow

Trade's Volume Mix

		Sell - MWh	Buy - MWh	
Lignite	(3.0%)	4,436	0	(0.0%)
Crete Conv.	(0.0%)	0	0	(0.0%)
Gas	(36.3%)	54,242	0	(0.0%)
Hydro	(6.3%)	9,348	0	(0.0%)
Imports	(4.8%)	7,112		
RES	(48.4%)	72,276	827	(0.6%)
Crete RES	(1.2%)	1,793	0	(0.0%)
BESS	(0.1%)	120	139	(0.1%)
HV Load	(0.0%)	0	19,603	(13.1%)
MV Load	(0.0%)	0	27,283	(18.3%)
LV Load	(0.0%)	0	72,987	(48.9%)
Crete Load	(0.0%)	0	6,110	(4.1%)
Pumping	(0.0%)	0	0	(0.0%)
Exports			20,229	(13.5%)
Sys.Losses	(0.0%)	0	2,149	(1.4%)
D/R Load	(0.0%)	0	0	(0.0%)

