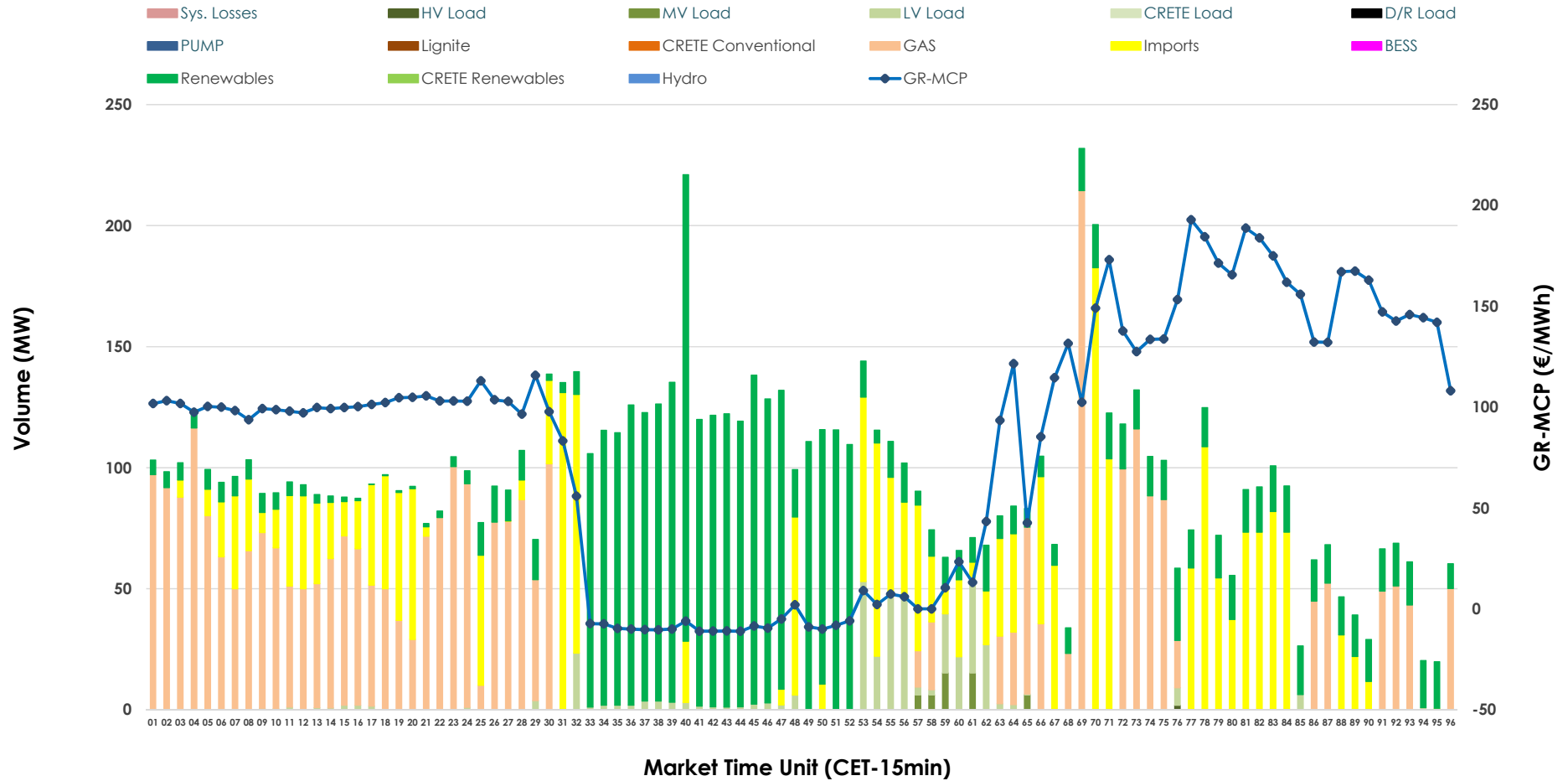


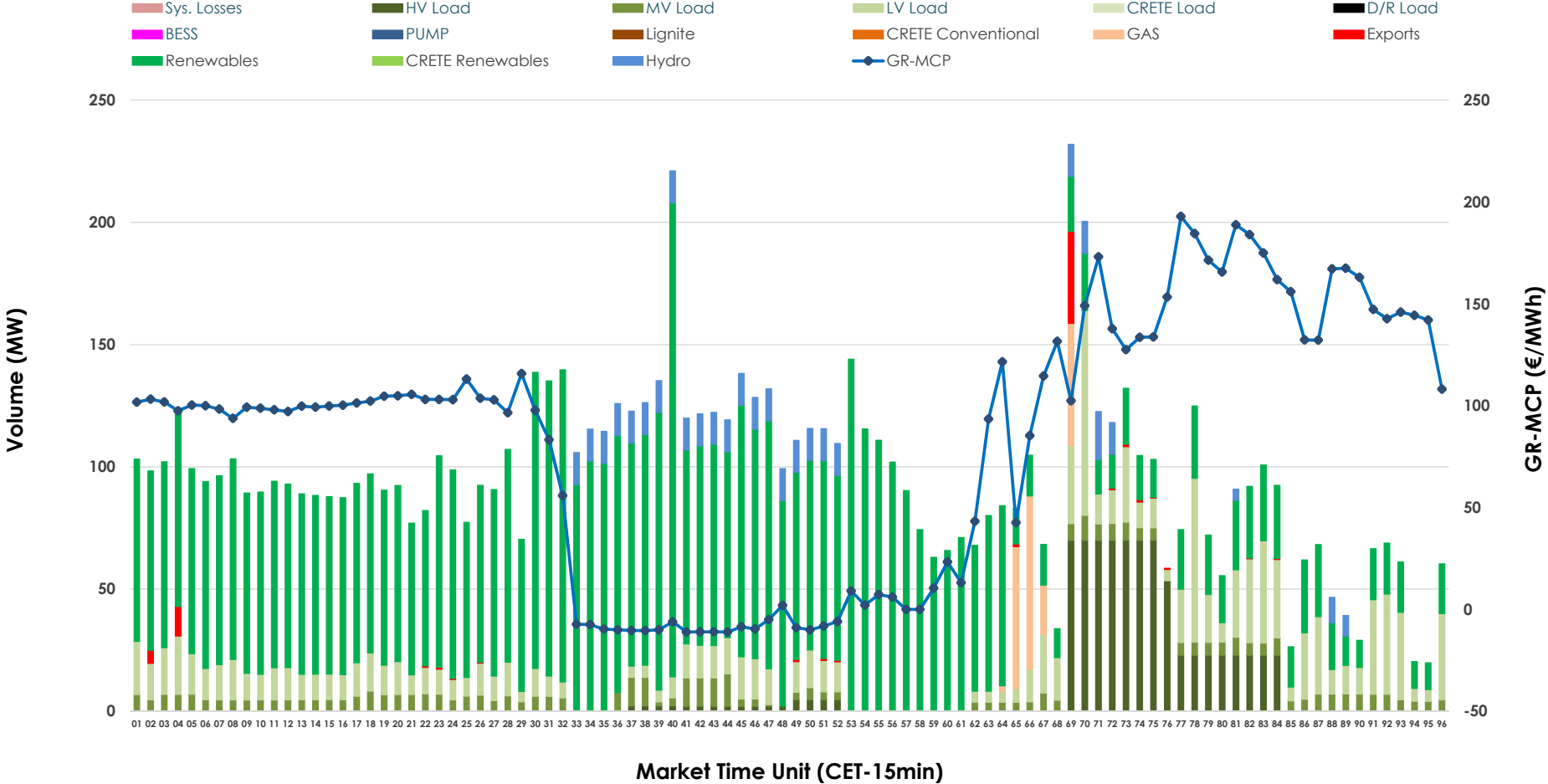


IDA '1' Market Outlook

22.03.2026 IDA '1' Market - Sell



22.03.2026 IDA '1' Market - Buy



GR Bidding Zone Weekly Figures

Delivery Day	16.03	17.03	18.03	19.03	20.03	21.03	22.03
	↗ 26%	↗ 16%	↘ -23%	↗ 12%	↗ 7%	↘ -13%	↘ -10%
Avg.MCP (€/MWh)	99.43	114.99	89.03	99.89	107.18	93.13	83.38
Max.MCP (€/MWh)	199.06	209.10	160.11	216.29	246.73	167.26	192.93
Min.MCP (€/MWh)	13.78	48.13	1.56	4.00	13.00	-8.88	-11.08
	↘ -1%	↗ 58%		↗ 192%	↘ -49%	↗ 20%	
Tot.Vol(GWh)	2.67	4.22	N/M	2.63	7.69	3.90	4.66

Trades by Order Type

Delivery Day		16.03	17.03	18.03	19.03	20.03	21.03	22.03	
Ord Price Type		Sell & Buy Trades in (GWh) per Price Type							(%)
PPT	(S)	0.000	0.000	0.000	0.000	0.000	0.000	0.000	0.00%
HBD	(S)	0.860	1.061	0.000	1.168	3.581	1.854	1.712	73.42%
BLK	(S)	0.000	0.000	0.000	0.000	0.000	0.000	0.000	0.00%
CPL	(S)	0.473	1.049	0.000	0.148	0.263	0.097	0.620	26.58%
PPT	(B)	0.000	0.000	0.000	0.000	0.000	0.000	0.000	0.00%
HBD	(B)	1.083	1.968	0.000	1.146	3.175	1.790	2.315	99.31%
BLK	(B)	0.000	0.000	0.000	0.000	0.000	0.000	0.000	0.00%
CPL	(B)	0.251	0.142	0.000	0.170	0.669	0.161	0.016	0.69%
		Sell & Buy Orders Traded per Price Type							(%)
PPT	(S)	0	0	0	0	0	0	0	0.00%
HBD	(S)	156	209	291	216	269	102	208	100.00%
BLK	(S)	0	0	0	0	0	0	0	0.00%
PPT	(B)	0	0	0	0	0	0	0	0.00%
HBD	(B)	761	835	802	790	988	824	755	100.00%
BLK	(B)	0	0	0	0	0	0	0	0.00%

- MCP** Market Clearing Price (€/MWh)
- PPT** Priority Price-Taking
- HBD** Hybrid
- BLK** Block
- CPL** Market Coupling Flow

Trade's Volume Mix

	Sell - MWh	Buy - MWh	
Lignite	0	0	(0.0%)
Crete Conv.	0	0	(0.0%)
Gas	799	50	(2.2%)
Hydro	0	85	(3.7%)
Imports	620		
RES	804	1,526	(65.4%)
Crete RES	0	0	(0.0%)
BESS	0	0	(0.0%)
HV Load	0	193	(8.3%)
MV Load	12	121	(5.2%)
LV Load	96	340	(14.6%)
Crete Load	0	0	(0.0%)
Pumping	0	0	(0.0%)
Exports		16	(0.7%)
Sys.Losses	0	0	(0.0%)
D/R Load	0	0	(0.0%)

