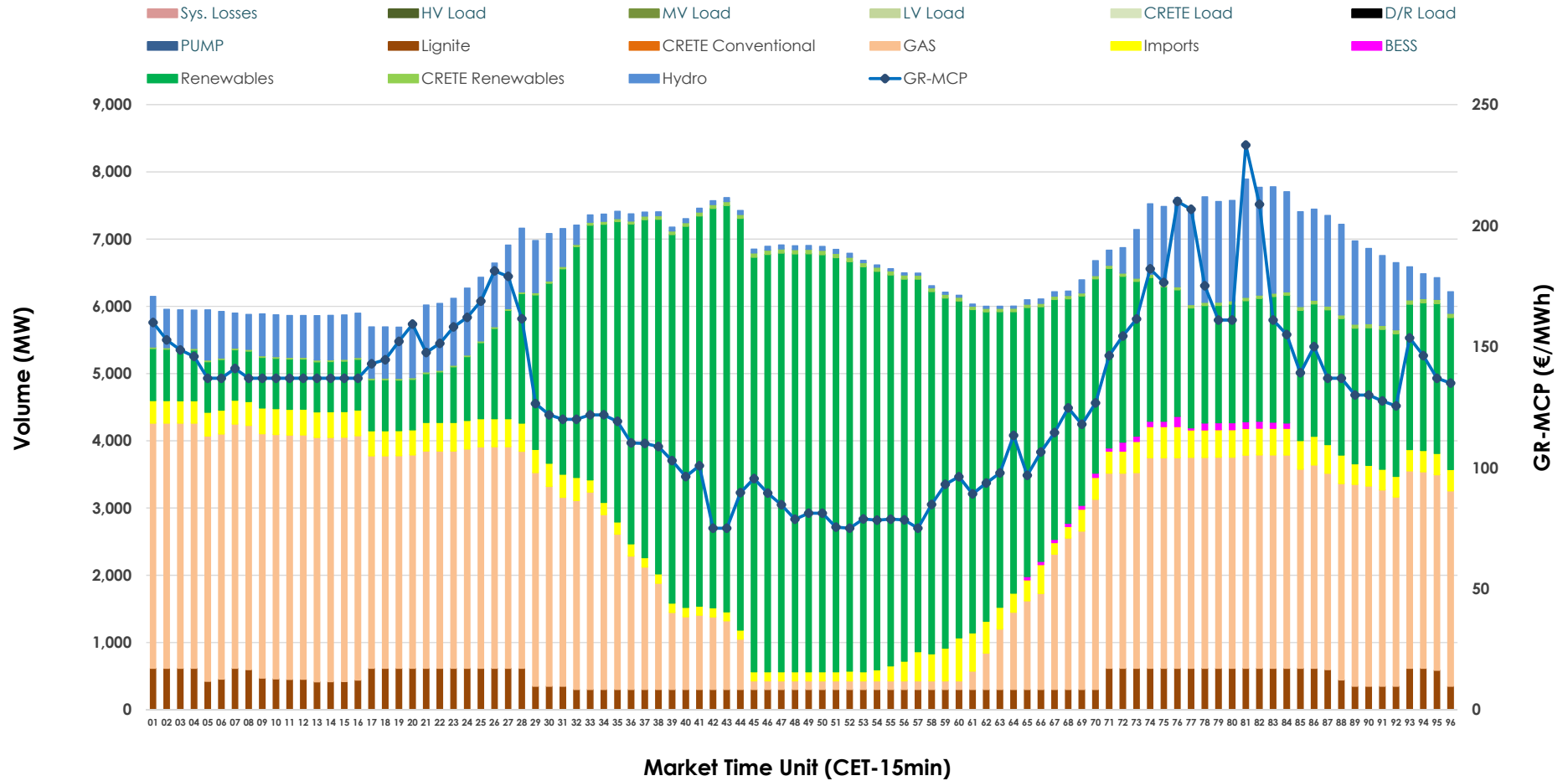


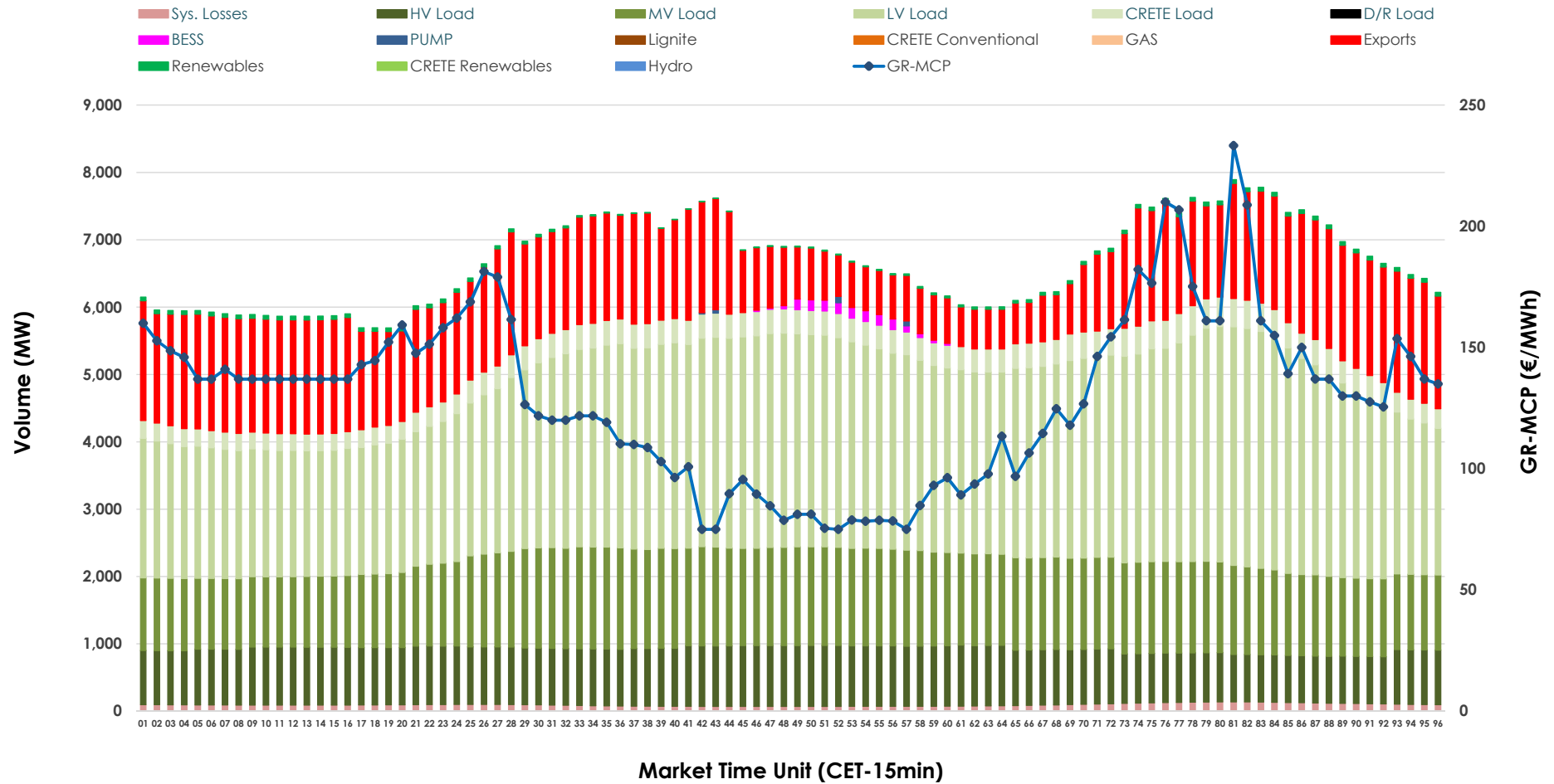


Day-Ahead Market Outlook

19.05.2026 Day-Ahead Market - Sell



19.05.2026 Day-Ahead Market - Buy



GR Bidding Zone Weekly Figures

Delivery Day	13.05	14.05	15.05	16.05	17.05	18.05	19.05
	↗ 20%	↘ -1%	↘ -3%	↘ -15%	↘ -4%	↗ 32%	↗ 30%
Avg.MCP (€/MWh)	95.00	94.38	91.65	78.36	75.20	99.62	129.48
Max.MCP (€/MWh)	187.34	236.73	170.33	136.89	168.83	257.62	233.28
Min.MCP (€/MWh)	0.00	0.00	0.00	0.02	-1.01	0.00	75.00
	↘ -2%	↗ 2%	↘ -2%	↘ -10%	↗ 1%	↗ 8%	↘ -3%
Tot.Vol(GWh)	335.77	342.44	335.47	303.35	306.87	331.83	320.85

Trades by Order Type

Delivery Day		13.05	14.05	15.05	16.05	17.05	18.05	19.05	
Ord Price Type		Sell & Buy Trades in (GWh) per Price Type							(%)
PPT	(S)	70.214	71.021	68.237	63.469	71.721	64.313	59.800	37.28%
HBD	(S)	78.723	72.208	72.381	66.338	64.208	71.127	71.266	44.42%
BLK	(S)	18.946	27.992	27.116	21.857	17.507	30.478	28.557	17.80%
CPL	(S)	0.000	0.000	0.000	0.013	0.000	0.000	0.803	0.50%
PPT	(B)	15.355	15.696	16.044	14.299	13.770	14.491	14.694	9.16%
HBD	(B)	128.880	127.499	125.379	121.066	111.681	121.731	124.344	77.51%
BLK	(B)	0.000	0.000	0.000	0.000	0.000	0.000	0.000	0.00%
CPL	(B)	23.648	28.027	26.310	16.311	27.985	29.695	21.389	13.33%
		Sell & Buy Orders Traded per Price Type							(%)
PPT	(S)	1686	1757	1720	1725	1722	1768	1646	29.99%
HBD	(S)	3378	3419	3324	3475	2870	3267	3835	69.87%
BLK	(S)	8	9	8	8	11	10	8	0.15%
PPT	(B)	2367	2353	2357	2402	2387	2317	2417	38.85%
HBD	(B)	4041	4071	4036	3969	3918	3696	3805	61.15%
BLK	(B)	0	0	0	0	0	0	0	0.00%

- MCP** Market Clearing Price (€/MWh)
- PPT** Priority Price-Taking
- HBD** Hybrid
- BLK** Block
- CPL** Market Coupling Flow

Trade's Volume Mix

		Sell - MWh	Buy - MWh	
Lignite	(6.7%)	10,691	0	(0.0%)
Crete Conv.	(0.0%)	0	0	(0.0%)
Gas	(34.9%)	55,961	0	(0.0%)
Hydro	(8.4%)	13,537	0	(0.0%)
Imports	(4.8%)	7,767		
RES	(44.2%)	70,980	934	(0.6%)
Crete RES	(0.7%)	1,088	0	(0.0%)
BESS	(0.3%)	402	391	(0.2%)
HV Load	(0.0%)	0	19,882	(12.4%)
MV Load	(0.0%)	0	31,233	(19.5%)
LV Load	(0.0%)	0	64,811	(40.4%)
Crete Load	(0.0%)	0	8,134	(5.1%)
Pumping	(0.0%)	0	60	(0.0%)
Exports			32,721	(20.4%)
Sys.Losses	(0.0%)	0	2,260	(1.4%)
D/R Load	(0.0%)	0	0	(0.0%)

