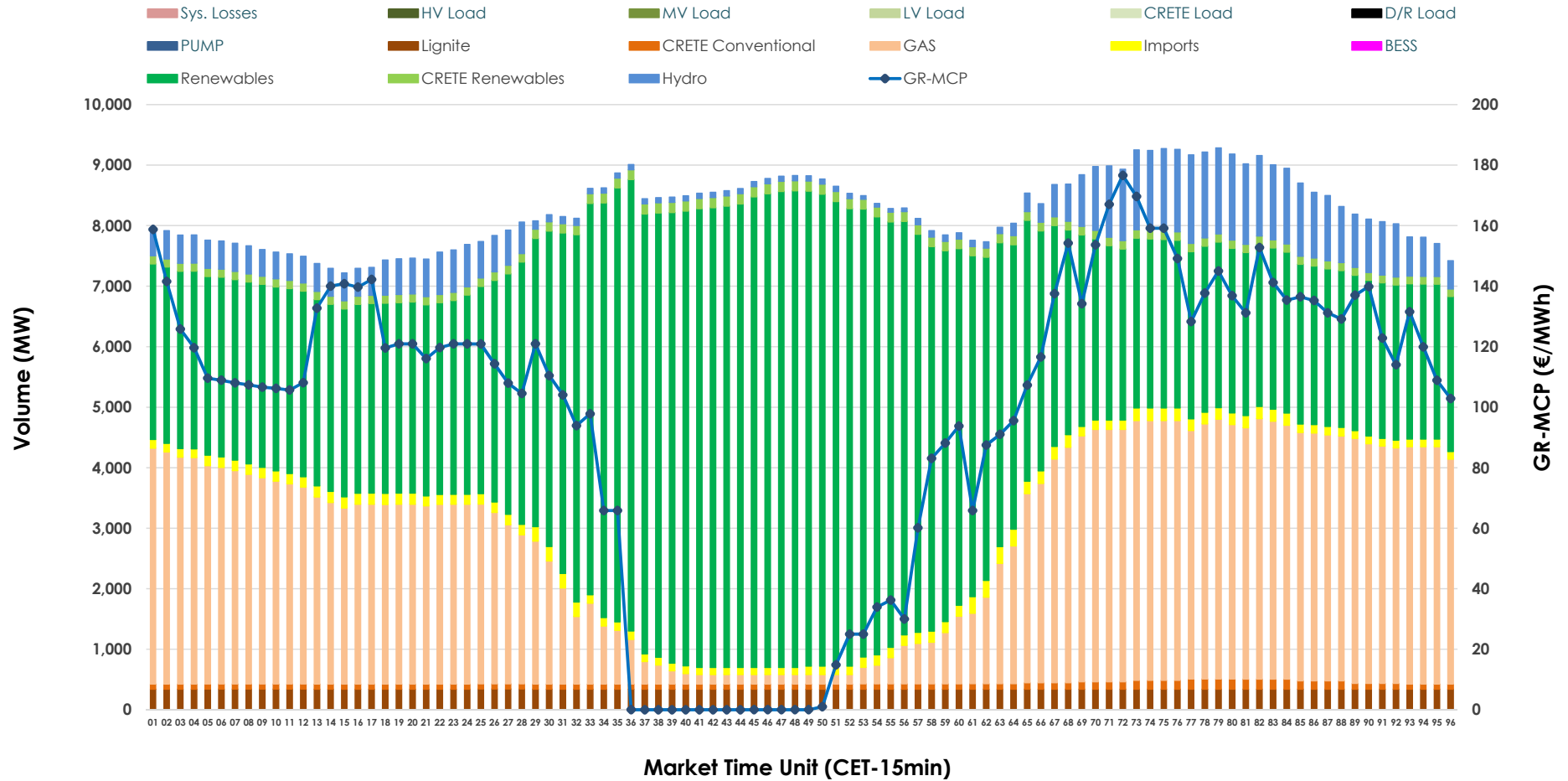


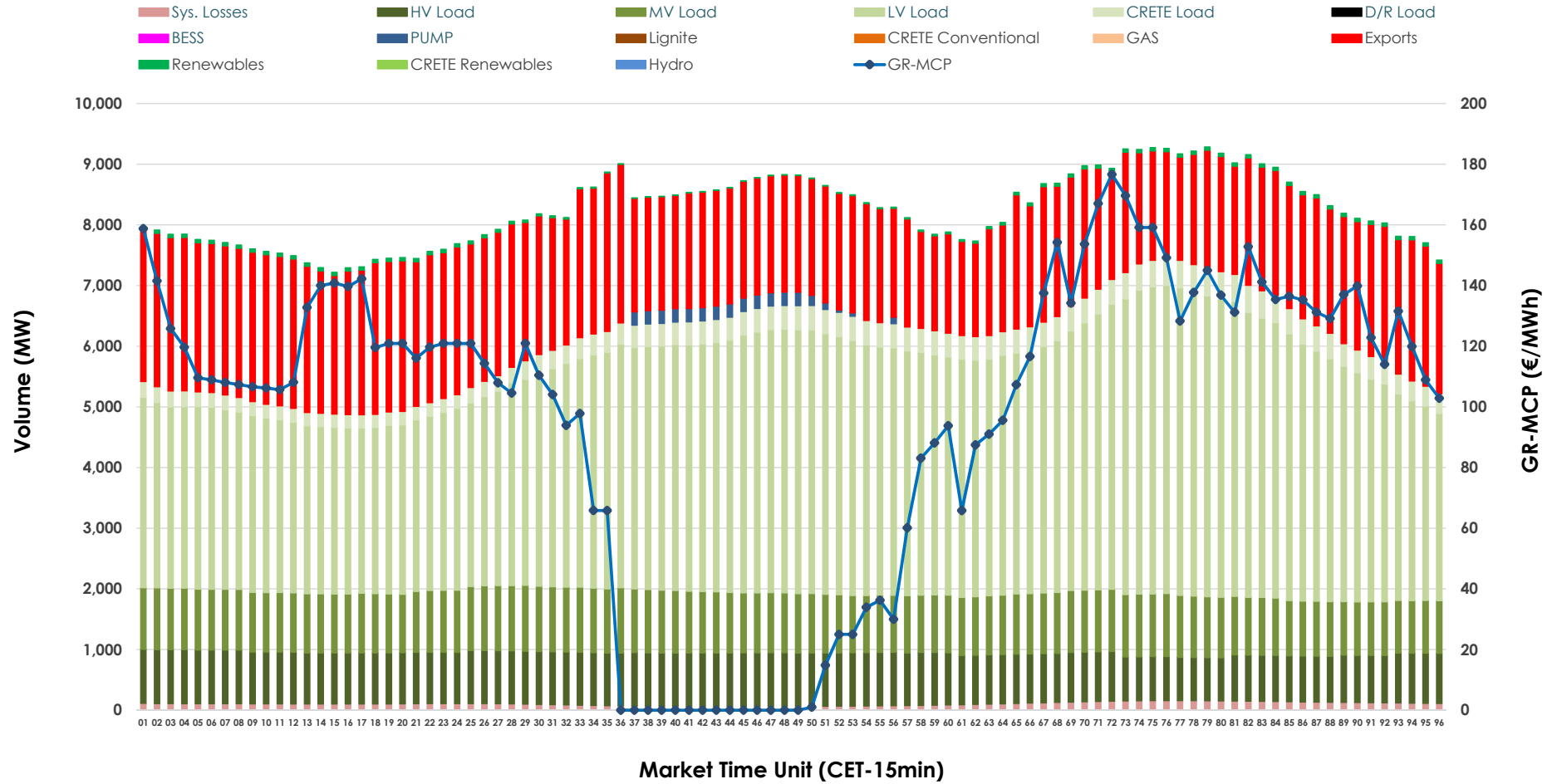


Day-Ahead Market Outlook

21.03.2026 Day-Ahead Market - Sell



21.03.2026 Day-Ahead Market - Buy



GR Bidding Zone Weekly Figures

Delivery Day	15.03	16.03	17.03	18.03	19.03	20.03	21.03
	↓ -1%	↔ 20%	↔ 16%	↓ -22%	↔ 11%	↔ 11%	↓ -14%
Avg.MCP (€/MWh)	83.39	100.39	116.20	90.85	101.23	112.04	96.67
Max.MCP (€/MWh)	164.03	199.21	212.05	167.11	219.70	250.73	176.61
Min.MCP (€/MWh)	-1.01	11.01	40.40	3.88	3.34	13.00	0.00
	↓ -6%	↔ 4%	↔ 17%	→ 0%	↓ -2%	↔ 5%	↓ -2%
Tot.Vol(GWh)	324.10	338.55	395.97	395.77	386.01	405.85	396.49

Trades by Order Type

Delivery Day		15.03	16.03	17.03	18.03	19.03	20.03	21.03	
Ord Price Type		Sell & Buy Trades in (GWh) per Price Type							(%)
PPT	(S)	74.010	71.660	84.654	94.196	93.438	96.577	90.130	45.46%
HBD	(S)	60.076	63.406	76.425	69.505	74.421	78.081	79.261	39.98%
BLK	(S)	27.936	29.721	36.898	28.203	20.366	28.178	28.856	14.56%
CPL	(S)	0.029	4.488	0.007	5.982	4.778	0.092	0.000	0.00%
PPT	(B)	12.939	13.684	14.050	13.302	13.670	13.501	14.027	7.08%
HBD	(B)	118.547	136.429	147.286	150.765	153.841	153.779	145.947	73.62%
BLK	(B)	0.000	0.000	0.000	0.000	0.000	0.000	0.000	0.00%
CPL	(B)	30.565	19.163	36.648	33.819	25.492	35.647	38.273	19.31%
		Sell & Buy Orders Traded per Price Type							(%)
PPT	(S)	1792	1814	1949	1927	2001	2050	1902	39.63%
HBD	(S)	2723	3131	3142	2970	3003	3049	2881	60.03%
BLK	(S)	12	10	21	12	8	13	16	0.33%
PPT	(B)	2341	2255	2260	2251	2246	2233	2232	35.28%
HBD	(B)	3981	3949	4043	4238	4109	4064	4095	64.72%
BLK	(B)	0	0	0	0	0	0	0	0.00%

- MCP** Market Clearing Price (€/MWh)
- PPT** Priority Price-Taking
- HBD** Hybrid
- BLK** Block
- CPL** Market Coupling Flow

Trade's Volume Mix

		Sell - MWh	Buy - MWh	
Lignite	(4.1%)	8,165	0	(0.0%)
Crete Conv.	(1.2%)	2,379	0	(0.0%)
Gas	(30.8%)	61,076	0	(0.0%)
Hydro	(6.4%)	12,597	0	(0.0%)
Imports	(2.1%)	4,067		
RES	(53.7%)	106,478	967	(0.5%)
Crete RES	(1.8%)	3,485	0	(0.0%)
BESS	(0.0%)	0	0	(0.0%)
HV Load	(0.0%)	0	20,065	(10.1%)
MV Load	(0.0%)	0	23,709	(12.0%)
LV Load	(0.0%)	0	90,999	(45.9%)
Crete Load	(0.0%)	0	8,295	(4.2%)
Pumping	(0.0%)	0	835	(0.4%)
Exports			50,874	(25.7%)
Sys.Losses	(0.0%)	0	2,502	(1.3%)
D/R Load	(0.0%)	0	0	(0.0%)

