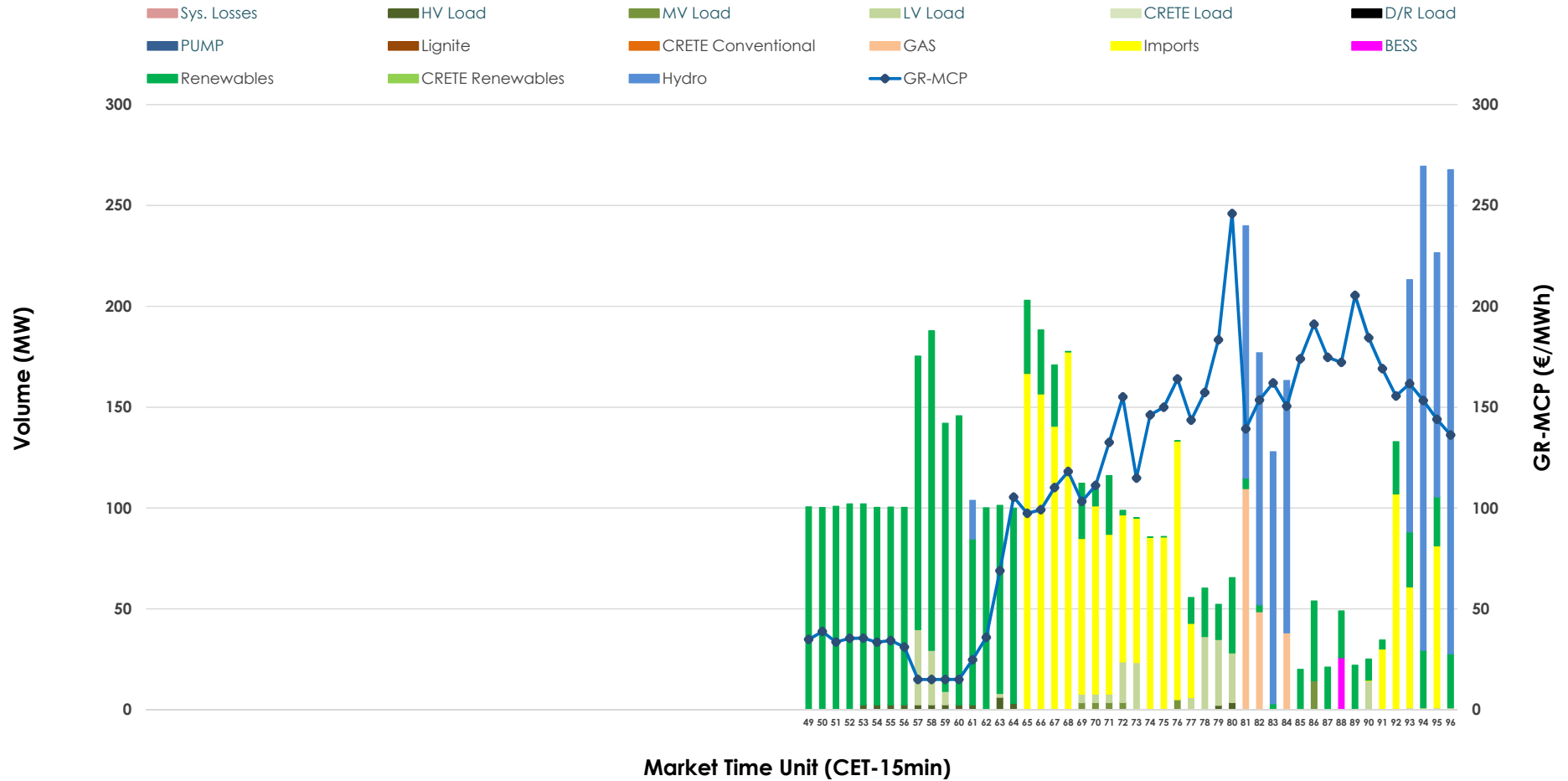


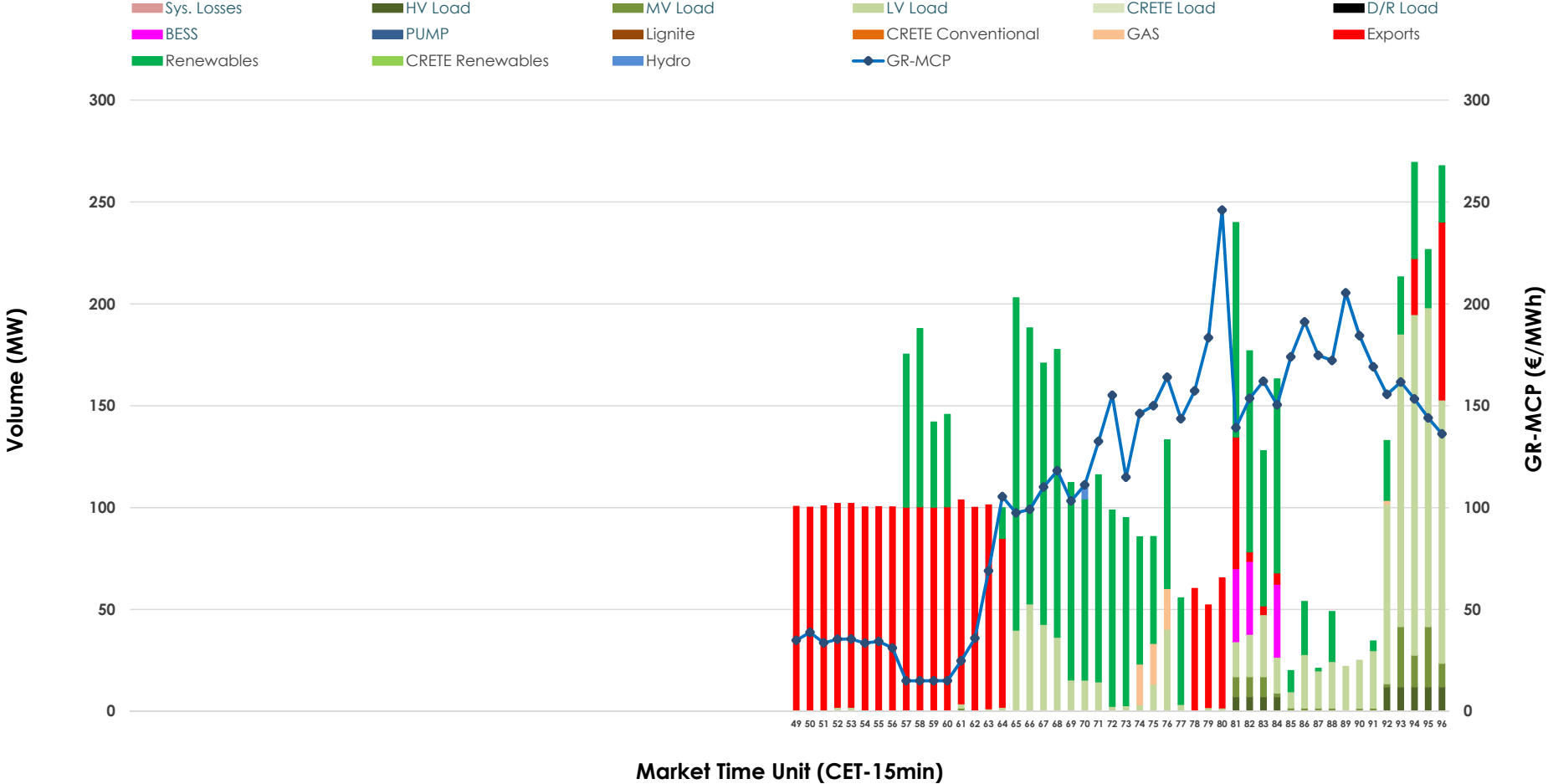


# IDA '3' Market Outlook

01.06.2026 IDA '3' Market - Sell



### 01.06.2026 IDA '3' Market - Buy



### GR Bidding Zone Weekly Figures

Delivery Day	26.05	27.05	28.05	29.05	30.05	31.05	01.06
	↗ 8%	↕ 47%	↘ -23%	↘ -18%	↗ 4%	↗ 32%	↗ 16%
<b>Avg.MCP (€/MWh)</b>	76.50	112.62	86.25	70.87	73.90	97.75	113.15
<b>Max.MCP (€/MWh)</b>	190.92	269.90	205.07	152.55	168.60	171.99	245.99
<b>Min.MCP (€/MWh)</b>	-9.34	-8.29	-6.67	-16.74	-8.00	19.99	15.00
	↕ 51%	↘ -60%	↕ 48%	↘ -39%	↗ 8%	↕ 146%	↘ -36%
<b>Tot.Vol(GWh)</b>	4.72	1.87	2.77	1.69	1.82	4.47	2.86

### Trades by Order Type

Delivery Day		26.05	27.05	28.05	29.05	30.05	31.05	01.06	
<b>Ord Price Type</b>		<b>Sell &amp; Buy Trades in (GWh) per Price Type</b>							<b>(%)</b>
<b>PPT</b>	(S)	0.000	0.000	0.000	0.000	0.000	0.000	0.000	0.00%
<b>HBD</b>	(S)	2.324	0.427	0.934	0.847	0.825	0.705	1.017	71.16%
<b>BLK</b>	(S)	0.000	0.000	0.000	0.000	0.000	0.000	0.000	0.00%
<b>CPL</b>	(S)	0.034	0.509	0.449	0.000	0.086	1.532	0.412	28.84%
<b>PPT</b>	(B)	0.000	0.000	0.000	0.000	0.000	0.000	0.000	0.00%
<b>HBD</b>	(B)	1.882	0.893	1.365	0.322	0.557	1.909	0.942	65.89%
<b>BLK</b>	(B)	0.000	0.000	0.000	0.000	0.000	0.000	0.000	0.00%
<b>CPL</b>	(B)	0.476	0.043	0.018	0.526	0.354	0.328	0.488	34.11%
		<b>Sell &amp; Buy Orders Traded per Price Type</b>							<b>(%)</b>
<b>PPT</b>	(S)	0	0	0	0	0	0	0	0.00%
<b>HBD</b>	(S)	141	115	144	167	109	177	168	100.00%
<b>BLK</b>	(S)	0	0	0	0	0	0	0	0.00%
<b>PPT</b>	(B)	0	0	0	0	0	0	0	0.00%
<b>HBD</b>	(B)	251	285	308	203	212	164	184	100.00%
<b>BLK</b>	(B)	0	0	0	0	0	0	0	0.00%

- MCP** Market Clearing Price (€/MWh)
- PPT** Priority Price-Taking
- HBD** Hybrid
- BLK** Block
- CPL** Market Coupling Flow

### Trade's Volume Mix

	Sell - MWh	Buy - MWh	
<b>Lignite</b> (0.0%)	0	0	(0.0%)
<b>Crete Conv.</b> (0.0%)	0	0	(0.0%)
<b>Gas</b> (3.4%)	49	15	(1.1%)
<b>Hydro</b> (21.8%)	311	2	(0.1%)
<b>Imports</b> (28.8%)	412		
<b>RES</b> (39.9%)	571	538	(37.6%)
<b>Crete RES</b> (0.0%)	0	0	(0.0%)
<b>BESS</b> (0.5%)	6	27	(1.9%)
<b>HV Load</b> (0.7%)	9	22	(1.6%)
<b>MV Load</b> (0.6%)	8	33	(2.3%)
<b>LV Load</b> (4.3%)	62	305	(21.3%)
<b>Crete Load</b> (0.0%)	0	0	(0.0%)
<b>Pumping</b> (0.0%)	0	0	(0.0%)
<b>Exports</b>		488	(34.1%)
<b>Sys.Losses</b> (0.0%)	0	0	(0.0%)
<b>D/R Load</b> (0.0%)	0	0	(0.0%)

